

349

GREENWICH STREET

BETWEEN HARRISON & JAY ST
TRIBECA



349

GREENWICH STREET

BETWEEN HARRISON & JAY ST
TRIBECA

Size: 1,450 SF Ground Floor

Frontage: 14'

Ceiling Heights: 14'

Possession: January 2025

Transportation: 1 2 3

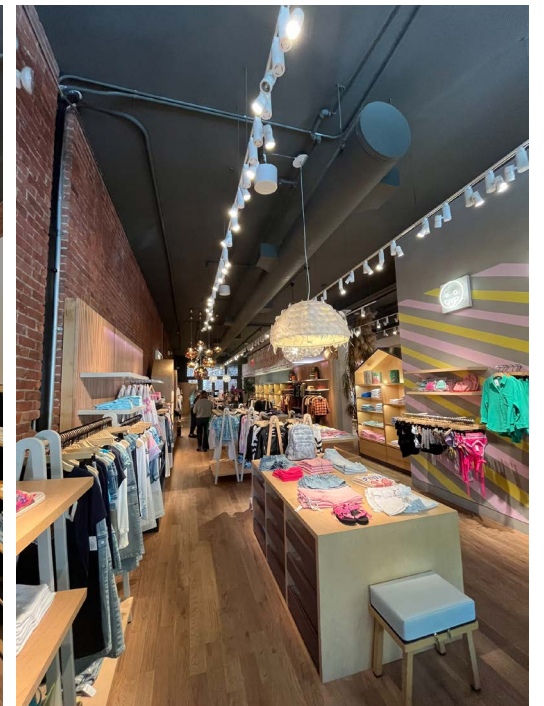
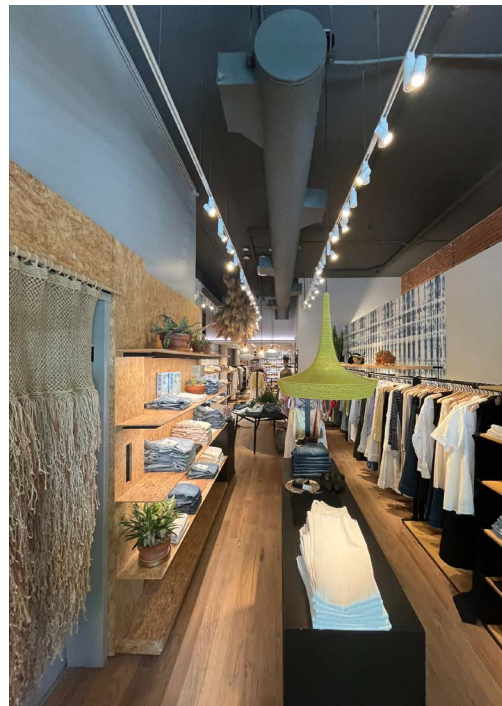
Property Highlights:

- Flagship retail opportunity
- Space is in turnkey luxury retail condition
- Steps away from Chambers street subway station
- High foot traffic area in dense residential neighborhood
- Neighboring tenants include: *The Westside*, *Sarabeth's*, *Alton Lane*, *TRNK*, *Chip City*, *Muse Paint Bar*, *The Hideaway Tribeca*, *Klein Epstein & Parker*, *Joseph Carini Carpets*, *Van Leeuwen*, *Starbucks*, *Glosslab*, *L'Angolo*, *McDonald's*, *J. Crew*, *Citibank*



349

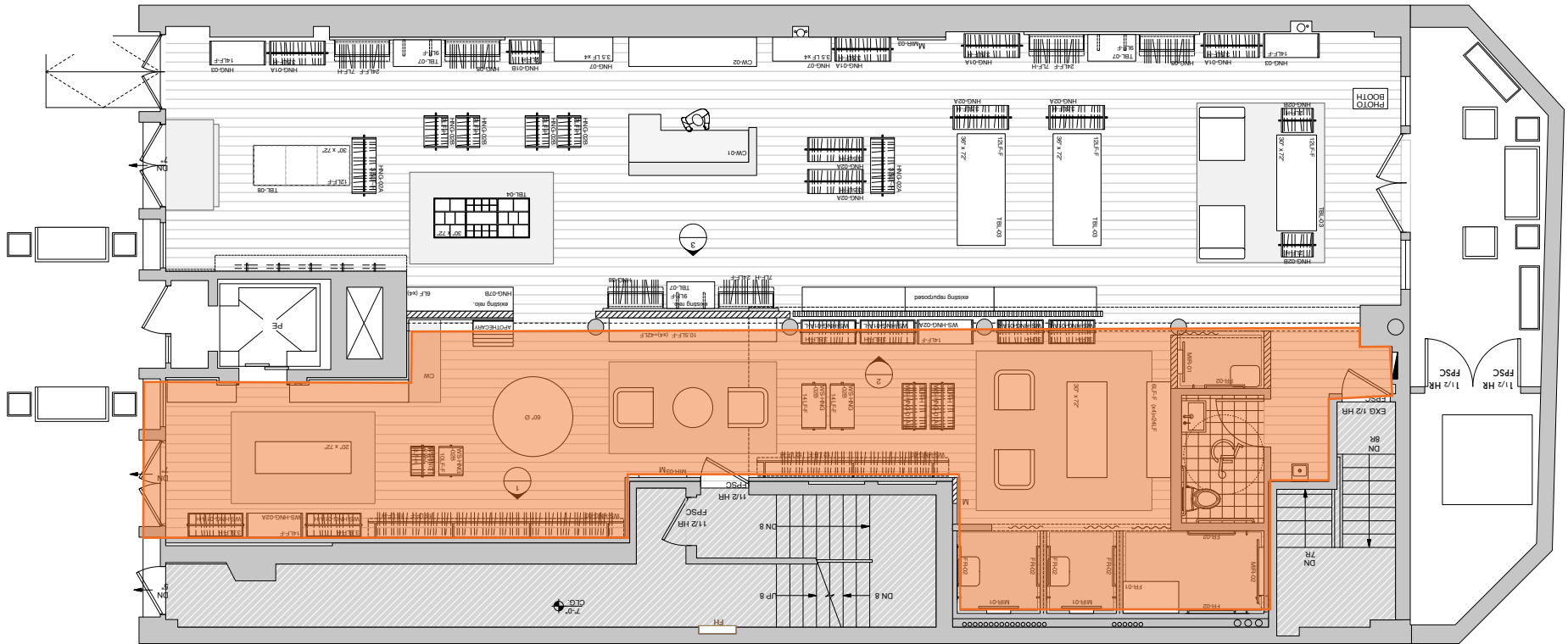
GREENWICH STREET



All information supplied in this marketing presentation and/or flyer is from sources deemed reliable and is furnished subject to errors, omissions, modifications, removal of listings from sale/lease and to any listing condition. Any square footage, dimensions, floor plans and/or technical data set forth are approximations and are subject to further elaboration/confirmation.

349

GREENWICH STREET



CONTACT OUR BROKERS
FOR MORE INFORMATION:

Hunter Lazan
HLazan@ksrny.com
772.559.5195

Jeff Geoghegan
JeffG@ksrny.com
212.945.8984



1385 Broadway - 22nd Floor
New York, NY 10018
212.417.9217
www.ksrny.com