

3084 SF CLASS A MEDICAL OFFICE FOR LEASE

742 E MAIN ST

Annville, PA 17003



PROPERTY DESCRIPTION

Over 3000 SF of stunning Class A medical office facility available for lease. This modern and versatile space would be perfect for any healthcare or medical user, professional, spa or salon. With its recent construction, the building offers a contemporary design and state-of-the-art amenities, including reception, exam rooms, private offices, fully equipped lab, conference and breakroom with kitchen. Attached balcony available for Tenant use. Excellent onsite parking. Located on the heavily traveled thoroughfare of Route 422 with significant daily traffic counts.

OFFERING SUMMARY

Lease Rate:	\$18.00 SF/yr (NNN)
Available SF:	3,084 SF
Lot Size:	27,200 SF
Building Size:	7,408 SF

DEMOGRAPHICS	0.3 MILES	0.5 MILES	1 MILE
Total Households	318	519	1,541
Total Population	758	1,355	4,859
Average HH Income	\$112,729	\$108,975	\$101,923

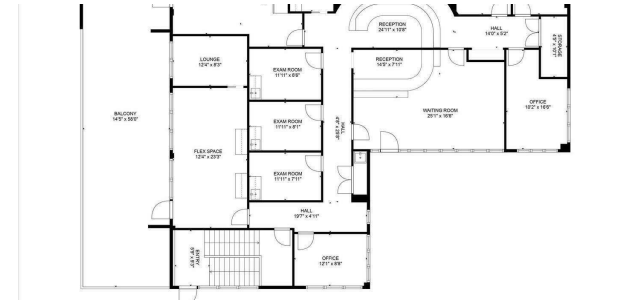
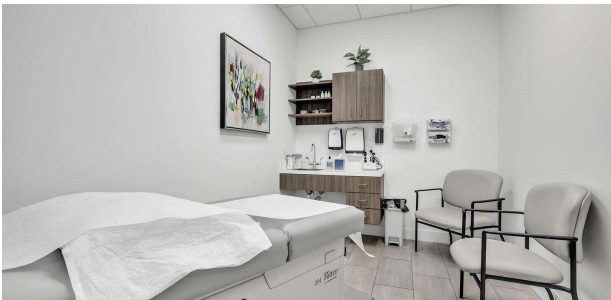
Josh Mumaw
(717) 503-0009



COLDWELL BANKER
COMMERCIAL
REALTY

LEASE

742 E MAIN ST
742 E Main St Annville, PA 17003



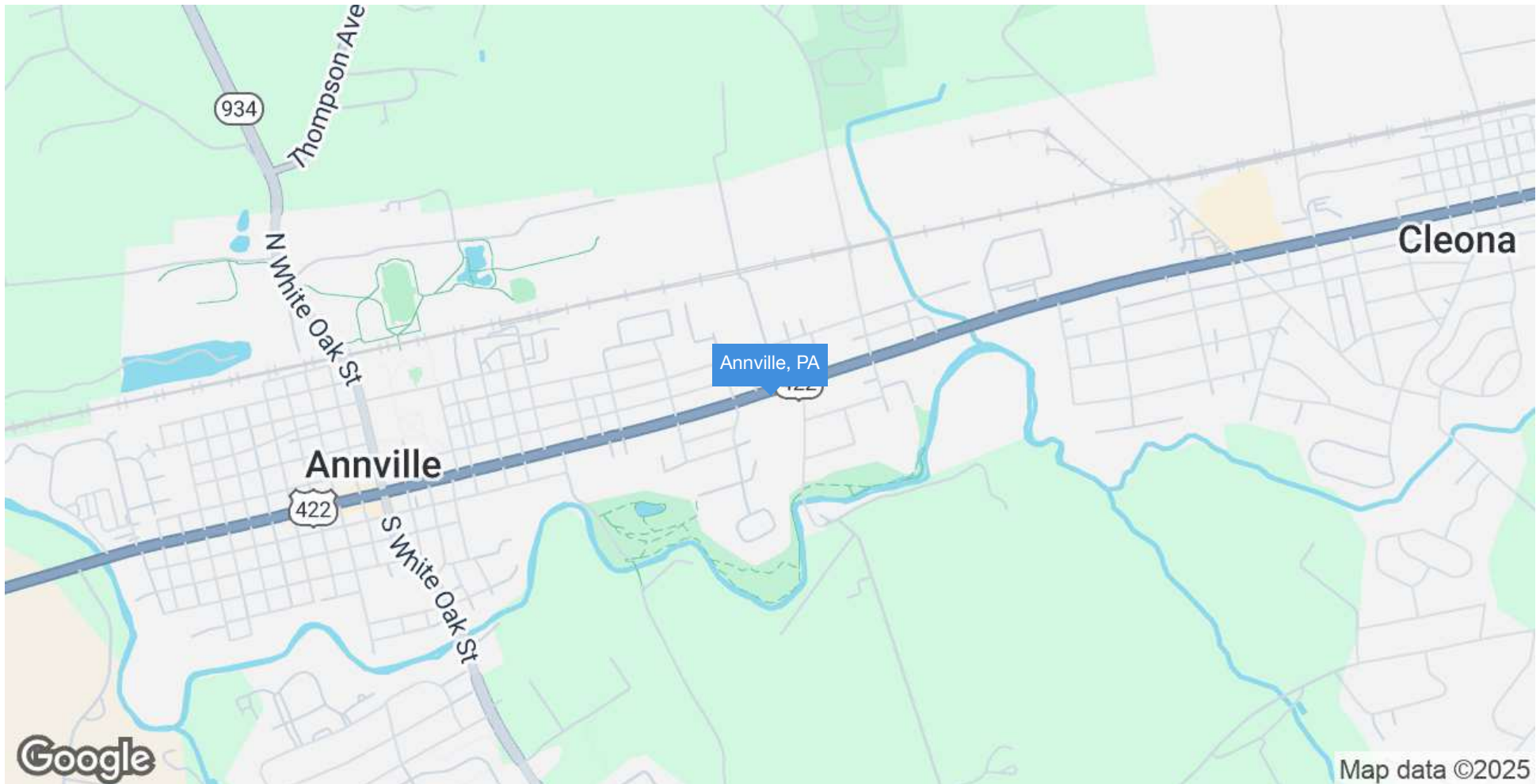
Josh Mumaw
(717) 503-0009



LEASE

742 E MAIN ST

742 E Main St Annville, PA 17003



Josh Mumaw
(717) 503-0009



COLDWELL BANKER
COMMERCIAL
REALTY