



3061
1,500± SF

3059
7,000± SF

3053
9,300± SF

FOR LEASE

Up To 16,300± SF Retail Space Available

Ewing Shopping Center
3053, 3059, 3061 Brick Church Pk.
Nashville, TN 37027

Exclusively Listed By



Laura Grider
615-604-7425
lgrider@horrellcompany.com

615-256-7114
www.horrellcompany.com
3030 Sidco Drive Nashville, TN 37204



The information contained herein has been obtained from sources deemed to be reliable and we have no reason to doubt its accuracy or reliability; however, this information is provided without any guarantee, should be verified by interested parties, and is subject to change without notice or obligation. Horrell Company assumes no responsibility for the accuracy or reliability of the information herein.

Property Overview

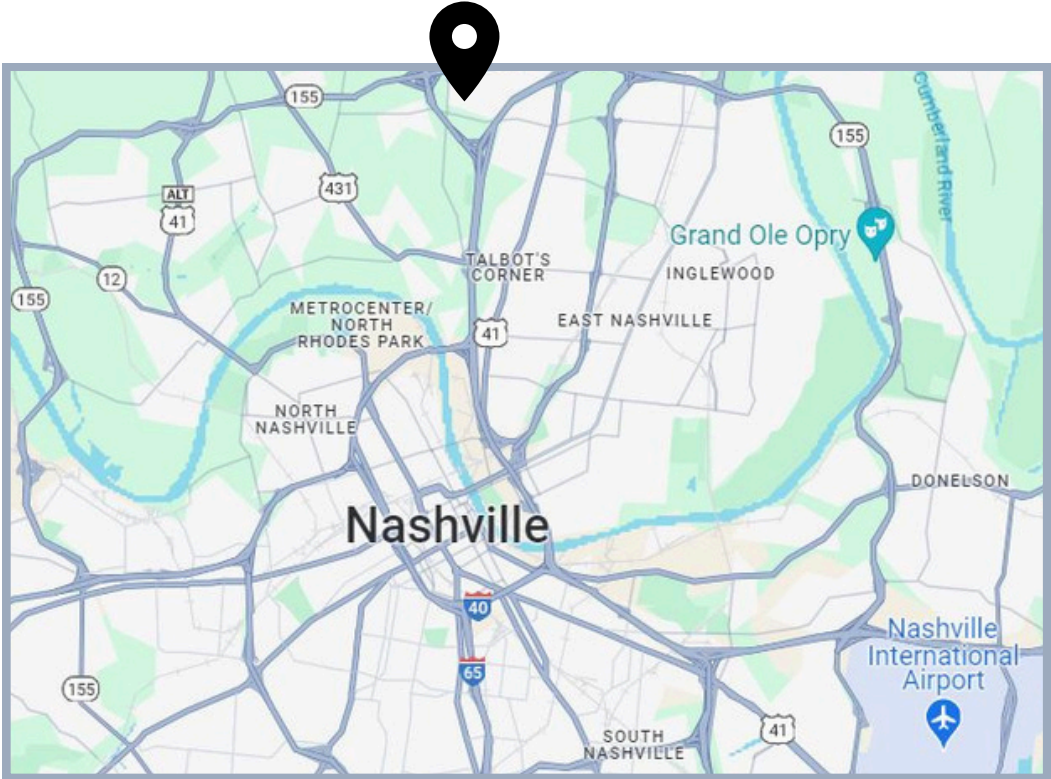
ADDRESS 3053, 3059, 3061
 Brick Church Pike
SIZE 34,085± SF
PRICE \$15.00- \$16.00 PSF NNN
OPEX \$1.96 PSF
AVAILABLE 16,300± SF

- Ample Parking
- Close Proximity to I-24 & I-65



Demographics

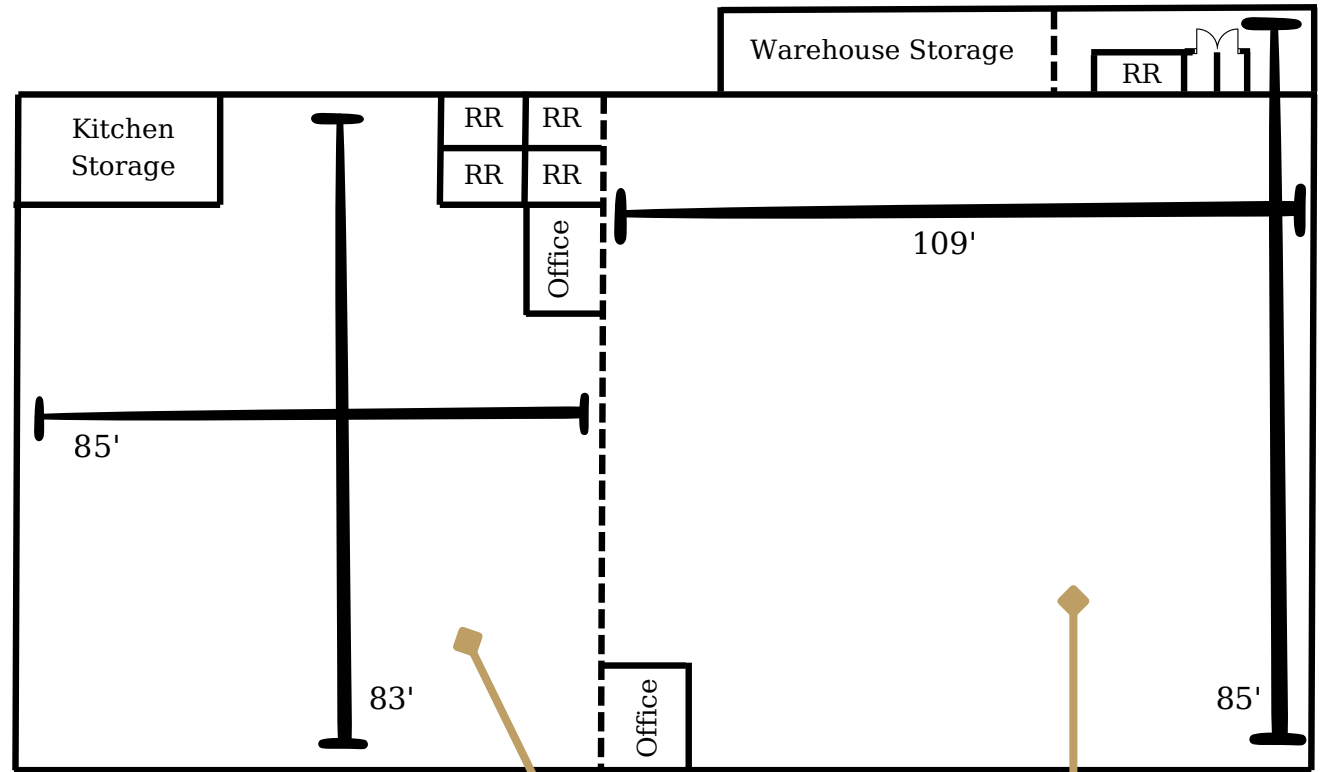
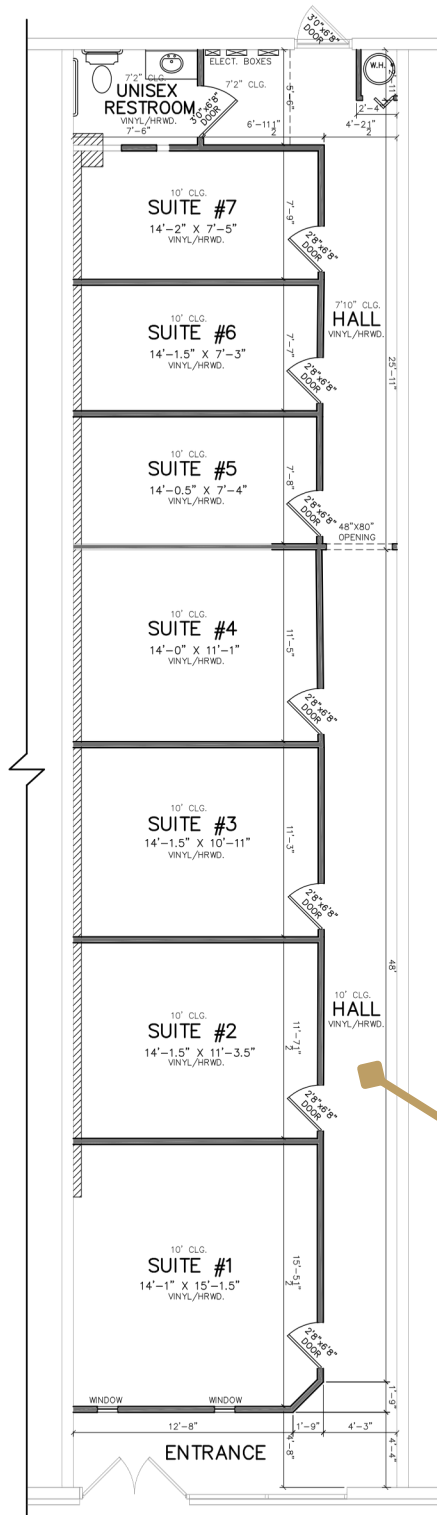
| | 2 MILES | 5 MILES | 10 MILES |
|--|----------|----------|----------|
| | 23,006 | 169,915 | 453,057 |
| | 8,483 | 70,388 | 193,497 |
| | \$55,264 | \$77,079 | \$88,862 |



Floor Plan Not to Scale



Floor Plans



3061
1,500± SF

3059
7,000± SF

3053
9,300± SF



3053 Brick Church Pike

Space Highlights

- 9,300± SF
- (2) Restrooms
- Double Door Loading
- LED Lighting Throughout
- (1) Small Office





3061 Brick Church Pike

Space Highlights

- 1,500± SF
- (1) Restroom
- LED Lighting Throughout
- Entrance/ Lobby

