



**PINNACLE  
REALTY**  
OF NEW YORK, LLC

EXCLUSIVE LISTING

**FOR SALE**



**15 NORTH 15TH STREET**

**BROOKLYN, NY 11222**

# Prime Williamsburg

8,631 Sq. Ft. One Story Building.  
Street-to-Street Access.  
Ideal For Repositioning

Type

**Retail / Creative Warehouse**



SQUARE FOOT

**8,631<sub>RSF</sub>**



ZONING

**M1-2**



CLEAR HEIGHT

**14'**



PARCEL ID

**2614**

BLOCK



LOADING

**2 DRIVE-IN DOORS**



**19**

LOT

PRICE

**Upon Request**

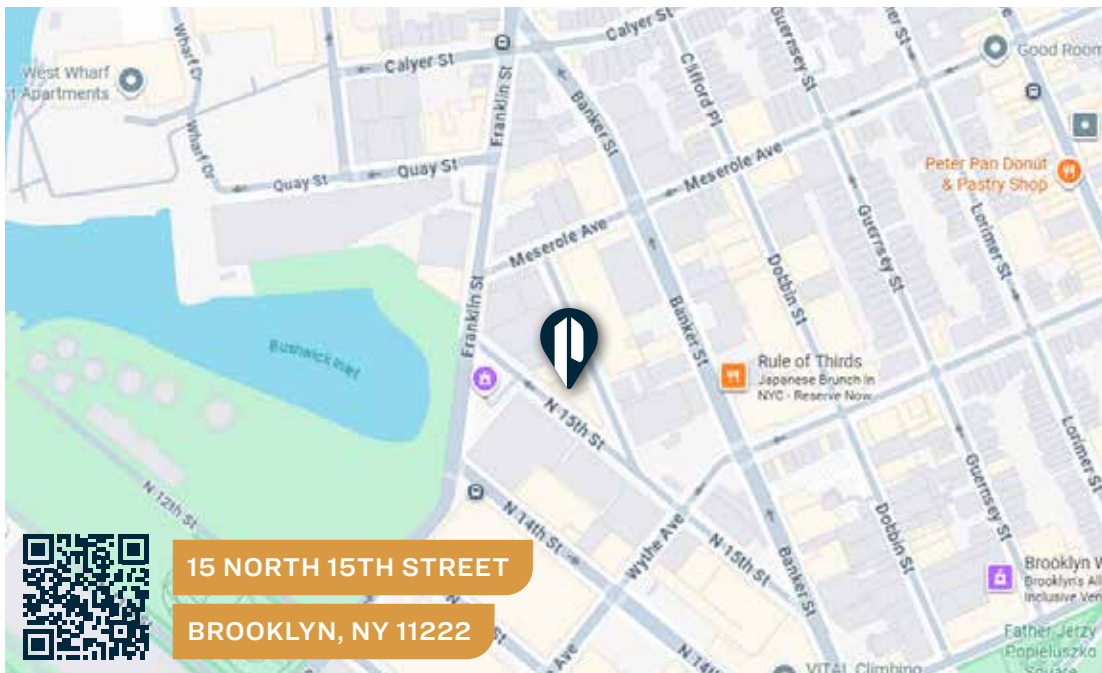
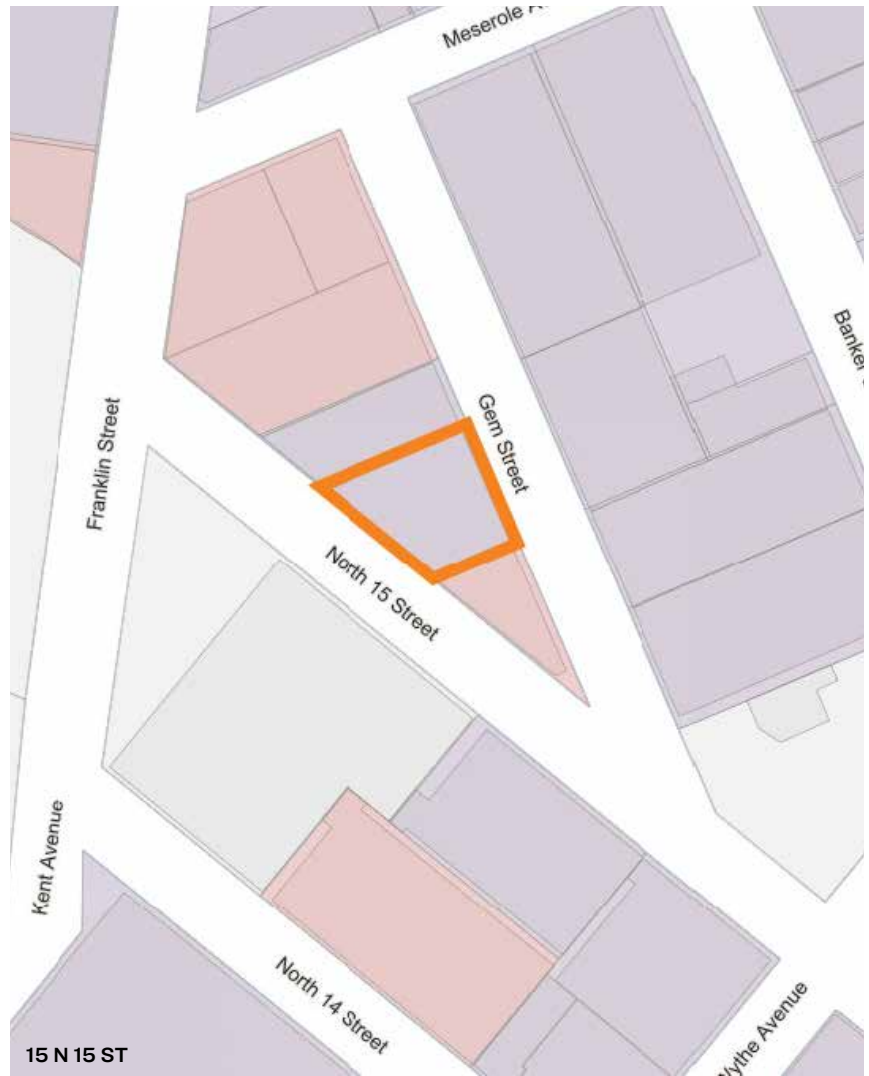
**718-784-8282 / PINNACLERENY.COM**

All information is from sources deemed reliable and is submitted subject to errors, omission, changes of price or other conditions, prior sale, rent and withdrawal without notice.

# Property Overview

## Features

- Street to Street Access
- 100 Sq. Ft. of Frontage on Two Streets
- 1 Row of Columns
- Dry Sprinklers
- Gas Heat
- Small Office
- Located in Strong Retail/Residential Market
- Bushwick Park Inlet
- Brooklyn Waterfront
- Expandable to 16,400 Sq. Ft.



## TRANSPORTATION



NASSAU STREET  
STATION



WILLIAMSBURG  
BRIDGE

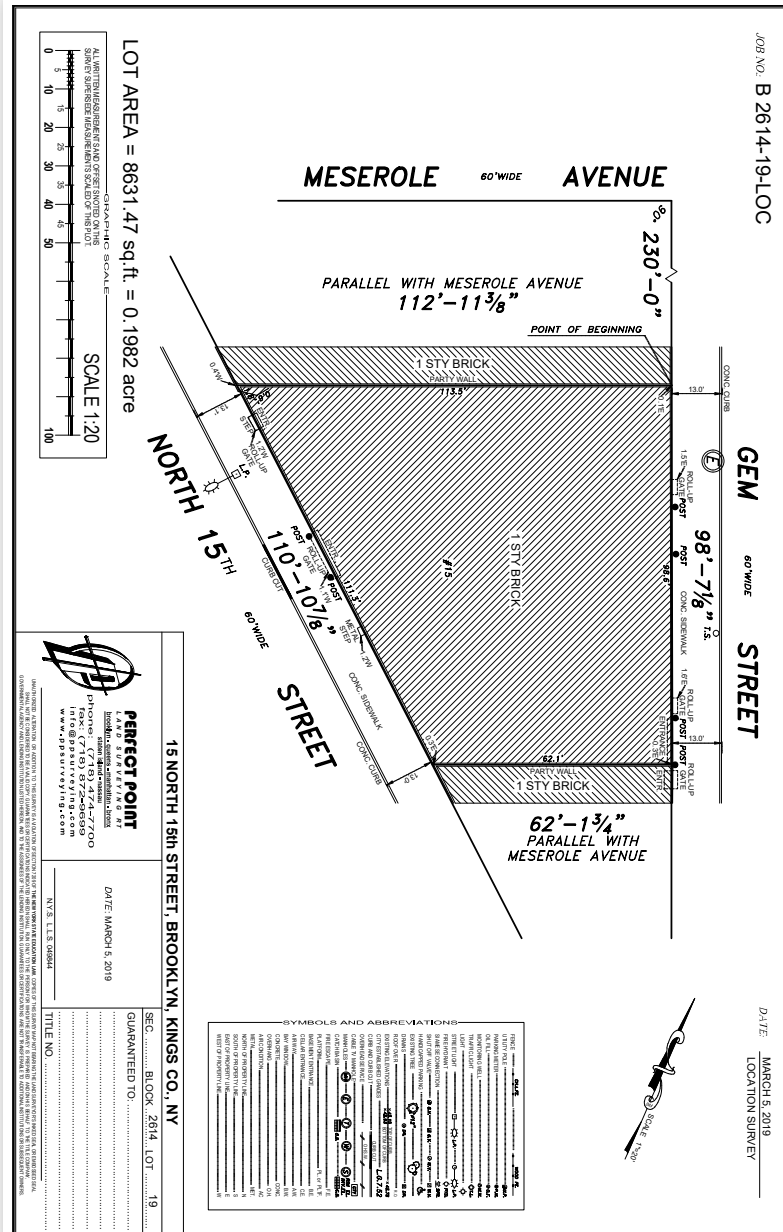
QUEENS  
MIDTOWN  
TUNNEL & EXPY

BROOKLYN  
QUEENS EXPY



B32: N 14TH ST

# SURVEY MAP



34-07 Steinway Street, Suite 202  
Long Island City, NY 11101  
718-784-8282  
[pinnaclereny.com](http://pinnaclereny.com)

FOR MORE INFORMATION ABOUT THIS  
PROPERTY CONTACT EXCLUSIVE AGENTS:



**DAVID JUNIK**  
Partner  
[djunik@pinnaclereny.com](mailto:djunik@pinnaclereny.com)  
718-371-6406



**THOMAS CHAMOUN**  
Salesperson  
[tchamoun@pinnaclereny.com](mailto:tchamoun@pinnaclereny.com)  
718-371-6377