

FOR LEASE

8 W 9TH ST

Santa Rosa, CA 95401



The information herein has not been independently verified by the real estate brokers. Interested parties should have experts of their choice inspect and verify all information. Real estate brokers are not experts with respect to building construction, environmental, legal, tax, and other such matters.

NICK EGIDE

CA LIC #01859524
(415) 762-8067

nick@meridiancommercial.com

JAMES SCHULTZ

CA LIC #02232628
(415) 762-8079

james@meridiancommercial.com

RORY TUTTLE

CA LIC #01927108
(415) 870-2036

rory@meridiancommercial.com



FOR LEASE

Property Summary

8 W 9TH ST

Santa Rosa, CA 95401



PROPERTY DESCRIPTION

The site includes multiple dock-high doors and drive-in/grade-level doors (3 docks, 5 drive-ins) which make loading/unloading efficient for distribution or fabrication uses. Clear ceiling height is between 20 and 24 ft, enhancing vertical storage or light manufacturing capability. 3-phase electrical service with 200-800 amps—suitable for heavier industrial uses and maker level manufacturing. The site includes a paved yard and surface parking areas — useful for staging, trucks, or overflow equipment.

PROPERTY HIGHLIGHTS

- Centrally located along rail line
- 3 Phase, 200-800 Amps
- 12' wide, 10' tall roll-ups
- Ample parking available
- Sprinklered

LOCATION DESCRIPTION

The property sits in downtown Santa Rosa, in the historic Railroad Square Historic District / “West End” area, putting industrial operations close to city amenities and workforce.

OFFERING SUMMARY

Lease Rate:	\$0.95 SF/month (NNN)
Number of Units:	2
Available SF:	±4,784 - 8,592 SF
Lot Size:	±135,472 SF
Building Size:	±94,676 SF
Property Type:	Industrial/Maker Space
Zoning:	MMU - Maker Mixed Use

NICK EGIDE

CA LIC #01859524
(415) 762-8067

nick@meridiancommercial.com

JAMES SCHULTZ

CA LIC #02232628
(415) 762-8079

james@meridiancommercial.com

RORY TUTTLE

CA LIC #01927108
(415) 870-2036

rory@meridiancommercial.com



FOR LEASE

Site Plan

8 W 9TH ST

Santa Rosa, CA 95401



1 EXISTING FIRST LEVEL FLOOR PLAN

NICK EGIDE

CA LIC #01859524
(415) 762-8067

nick@meridiancommercial.com

JAMES SCHULTZ

CA LIC #02232628
(415) 762-8079

james@meridiancommercial.com

RORY TUTTLE

CA LIC #01927108
(415) 870-2036

rory@meridiancommercial.com



FOR LEASE

Lease Spaces

8 W 9TH ST

Santa Rosa, CA 95401

LEASE INFORMATION

Lease Type:	NNN	Lease Term:	Negotiable
Total Space:	4,784 - 8,592 SF	Lease Rate:	\$0.95 SF/month

AVAILABLE SPACES

SUITE	TENANT	SIZE (SF)	LEASE TYPE	LEASE RATE	DESCRIPTION
K	Available	4,784 SF	NNN	\$0.95 SF/month \$0.26/SF/month	3 small offices, 3 dock high and 1 on grade roll-up doors. Triple nets approximately
L	Available	8,592 SF	NNN	\$0.95 SF/month \$0.26/SF/month	2 Grade level roll-up doors, multiple small offices. Triple nets approximately



NICK EGIDE
CA LIC #01859524
(415) 762-8067
nick@meridiancommercial.com

JAMES SCHULTZ
CA LIC #02232628
(415) 762-8079
james@meridiancommercial.com

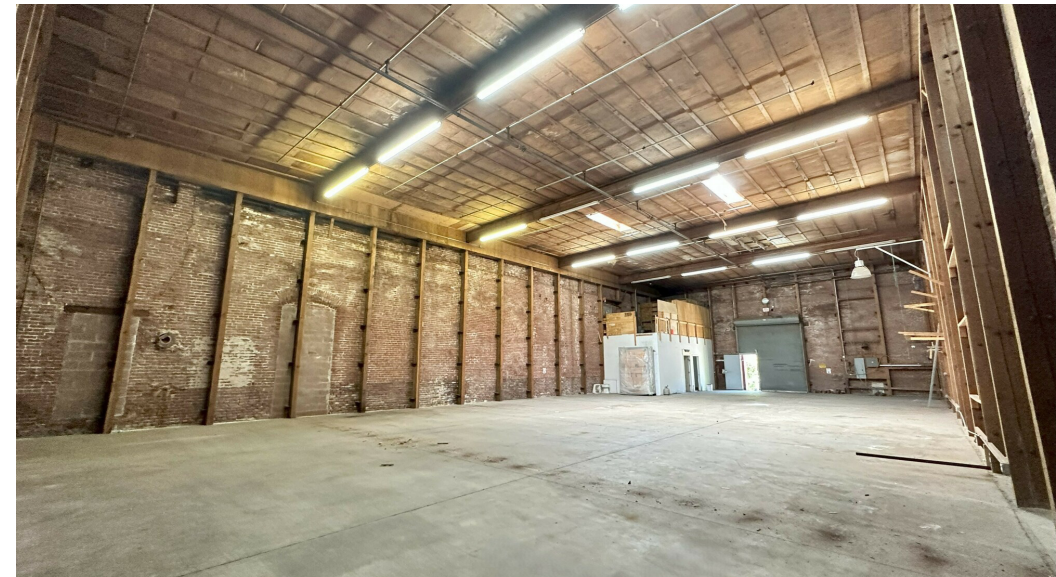
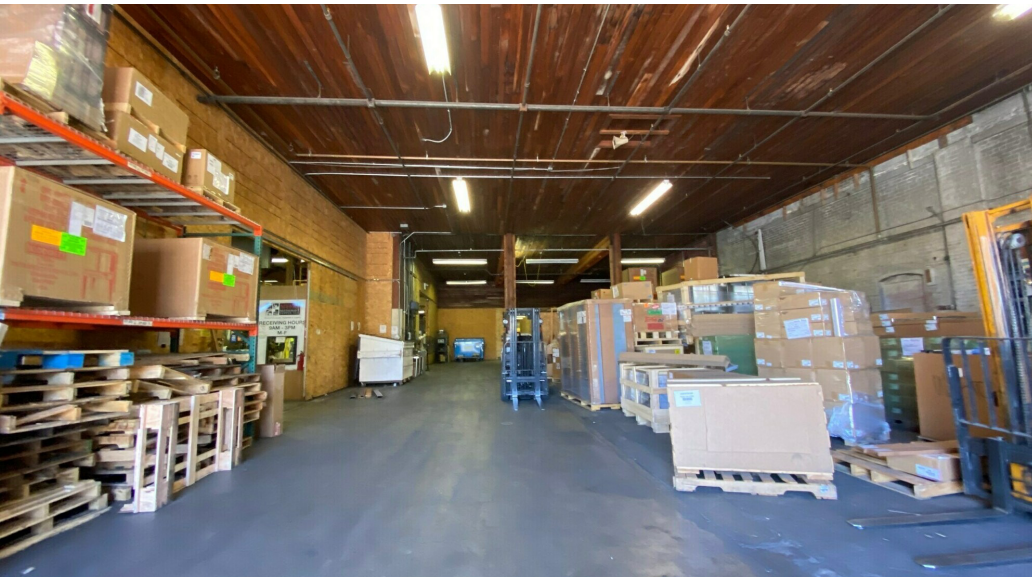
RORY TUTTLE
CA LIC #01927108
(415) 870-2036
rory@meridiancommercial.com

FOR LEASE

Additional Photos

8 W 9TH ST

Santa Rosa, CA 95401



NICK EGIDE

CA LIC #01859524
(415) 762-8067

nick@meridiancommercial.com

JAMES SCHULTZ

CA LIC #02232628
(415) 762-8079

james@meridiancommercial.com

RORY TUTTLE

CA LIC #01927108
(415) 870-2036

rory@meridiancommercial.com



FOR LEASE

Retailer Map

8 W 9TH ST

Santa Rosa, CA 95401



Map data ©2025 Google Imagery ©2025 Airbus

NICK EGIDE

CA LIC #01859524
(415) 762-8067

nick@meridiancommercial.com

JAMES SCHULTZ

CA LIC #02232628
(415) 762-8079

james@meridiancommercial.com

RORY TUTTLE

CA LIC #01927108
(415) 870-2036

rory@meridiancommercial.com

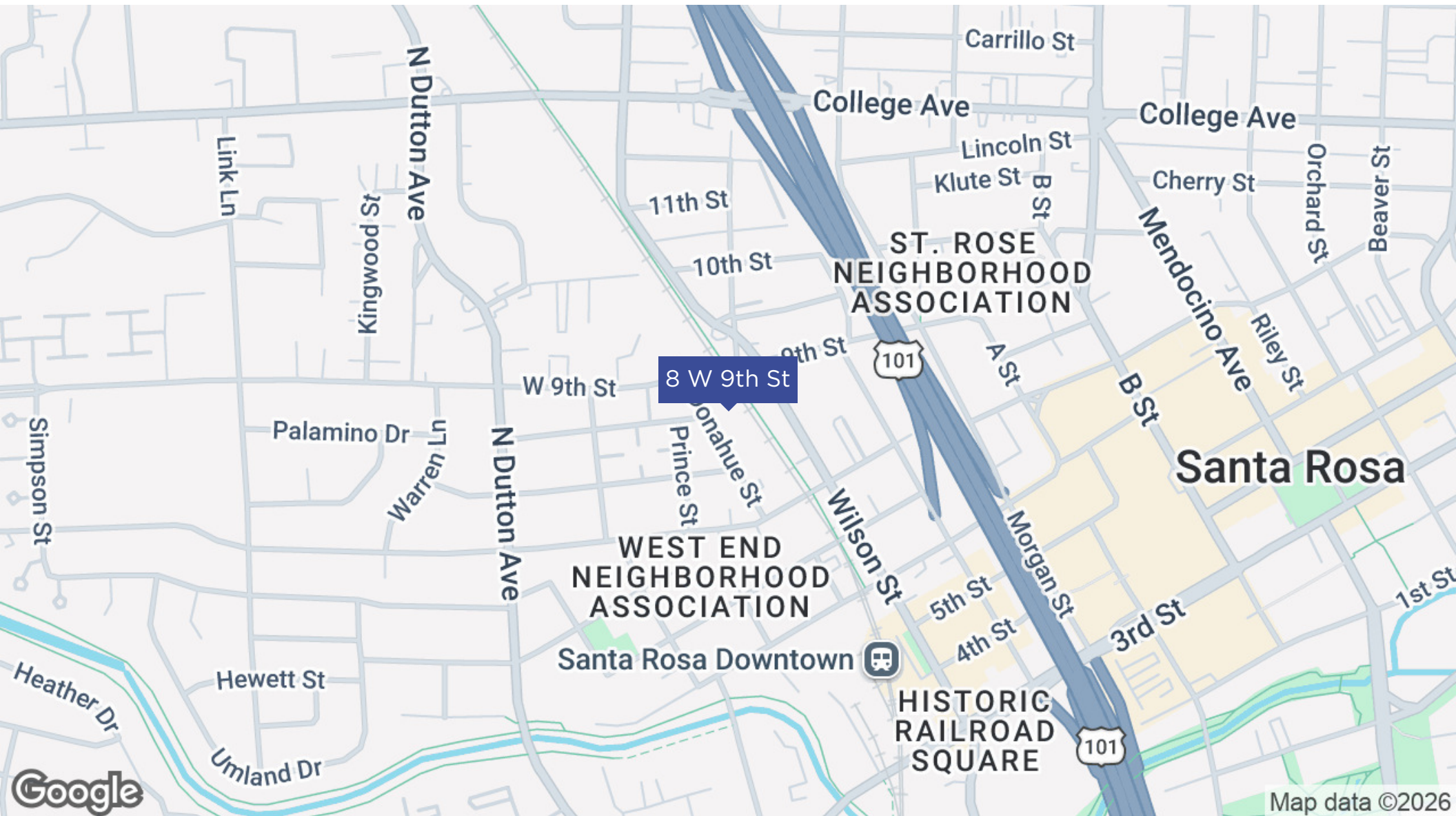


FOR LEASE

Location Map

8 W 9TH ST

Santa Rosa, CA 95401



NICK EGIDE

CA LIC #01859524
(415) 762-8067

nick@meridiancommercial.com

JAMES SCHULTZ

CA LIC #02232628
(415) 762-8079

james@meridiancommercial.com

RORY TUTTLE

CA LIC #01927108
(415) 870-2036

rory@meridiancommercial.com

