



OFFICE SPACE FOR LEASE

6010-6040 COMMERCE BOULEVARD, ROHNERT PARK, CA 94928

500 BICENTENNIAL WAY, SUITE 310 | SANTA ROSA, CA 95403 | WCOMMERCIALRE.COM

OFFICE SPACE FOR LEASE



FOR MORE INFORMATION:

CARLOS RIVAS

707.483.1229

CARLOS@WREALESTATE.NET

CALDRE #00550273

OFFICE SPACE FOR LEASE

6010-6040 COMMERCE BOULEVARD, ROHNERT PARK, CA 94928

EXECUTIVE SUMMARY



OFFERING SUMMARY

Available SF: 2,291± RSF

Lease Rate: \$1.75/SF/month
(Modified Full Service)

Lot Size: 4.21± Acres

Year Built: 1988

Building Size: 29,700± SF

Zoning: I-L/O

PROPERTY OVERVIEW

Attractive high visibility office complex with space available for Lease in Rohnert Park, CA. One space currently available, combined suites #101-111 offering 2,291± rentable square feet - see attached floor plan. Campus setting with mature landscaping, excellent for professional office or medical uses. Total square footage of complex is 29,700± square feet. With a parking ratio of 6 per 1,000, ample on-site parking allows for many uses, Zoning is I-L/O. Leases are Full Service excluding interior janitorial.

LOCATION OVERVIEW

City of Rohnert Park, just 45 miles north of San Francisco. Excellent location close to Highway 101, shopping, restaurants, and public transportation.

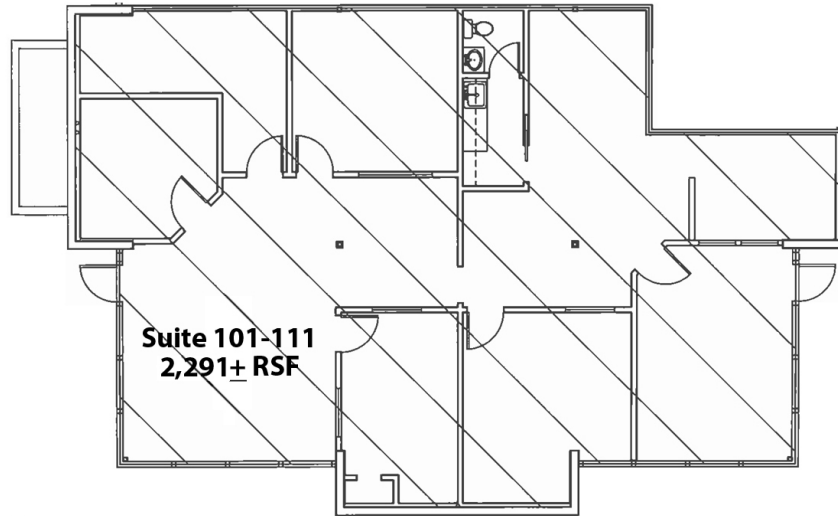


CARLOS RIVAS
707.483.1229
CARLOS@WREALESTATE.NET
CALDRE #00550273

OFFICE PROPERTY FOR LEASE

6010-6040 COMMERCE BOULEVARD, ROHNERT PARK, CA 94928

AVAILABLE SPACES



SPACE	SPACE USE	LEASE RATE	LEASE TYPE	SIZE (SF)	TERM	COMMENTS
Suite 101-111	Office	\$1.75 SF/MONTH	Modified Full Service	2,291± RSF	Negotiable	Full Service excluding interior janitorial

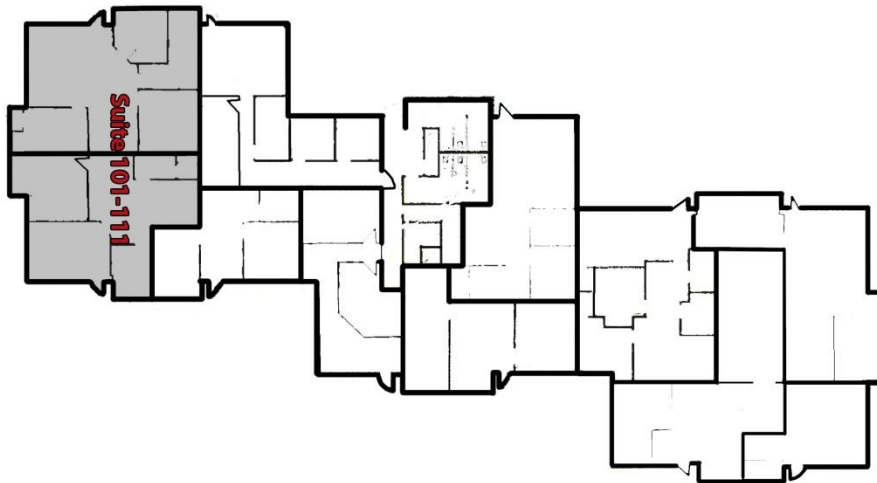
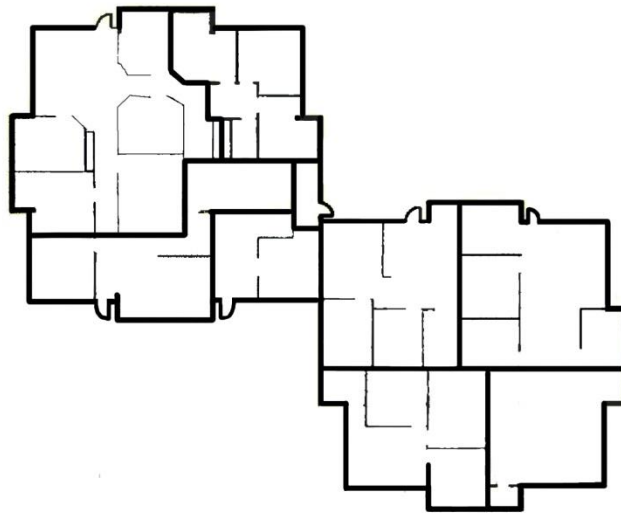
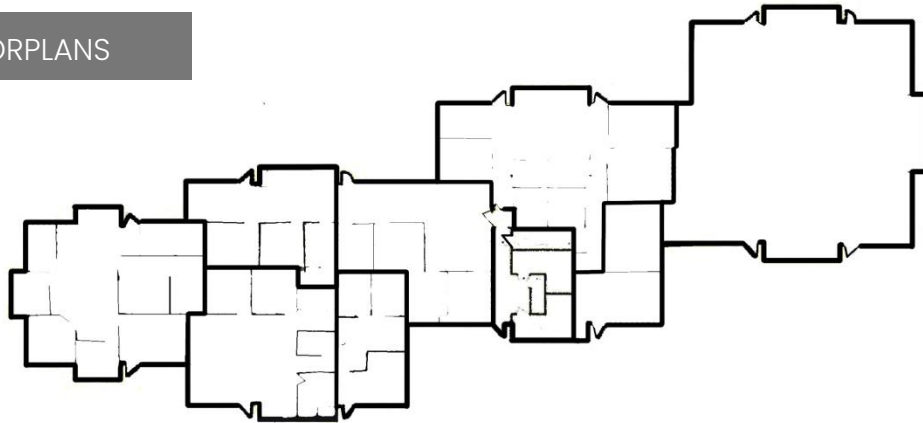


CARLOS RIVAS
707.483.1229
CARLOS@WREALESTATE.NET
CALDRE #00550273

OFFICE PROPERTY FOR LEASE

6010-6040 COMMERCE BOULEVARD, ROHNERT PARK, CA 94928

BUILDING FLOORPLANS



Commerce Boulevard



CARLOS RIVAS
707.483.1229
CARLOS@WREALESTATE.NET
CALDRE #00550273

OFFICE PROPERTY FOR LEASE

6010-6040 COMMERCE BOULEVARD, ROHNERT PARK, CA 94928

ADDITIONAL PHOTOS

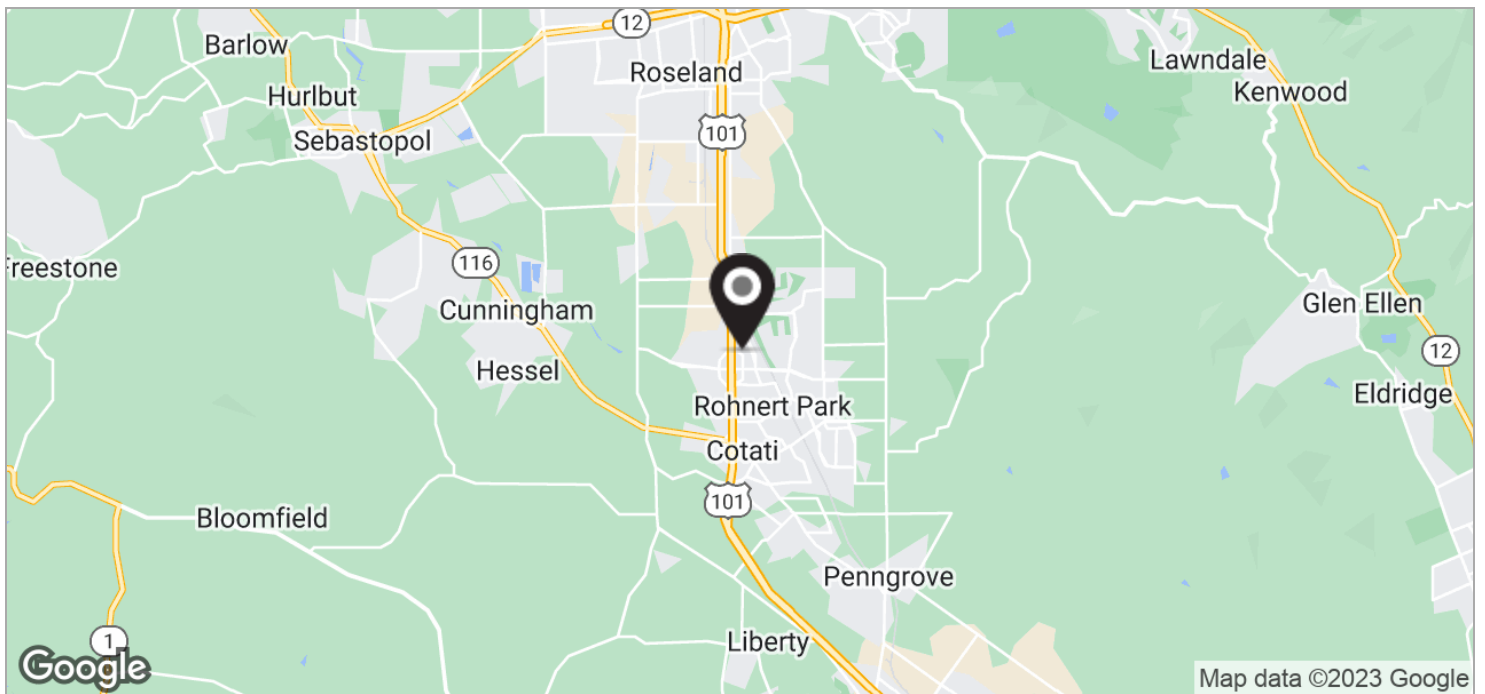
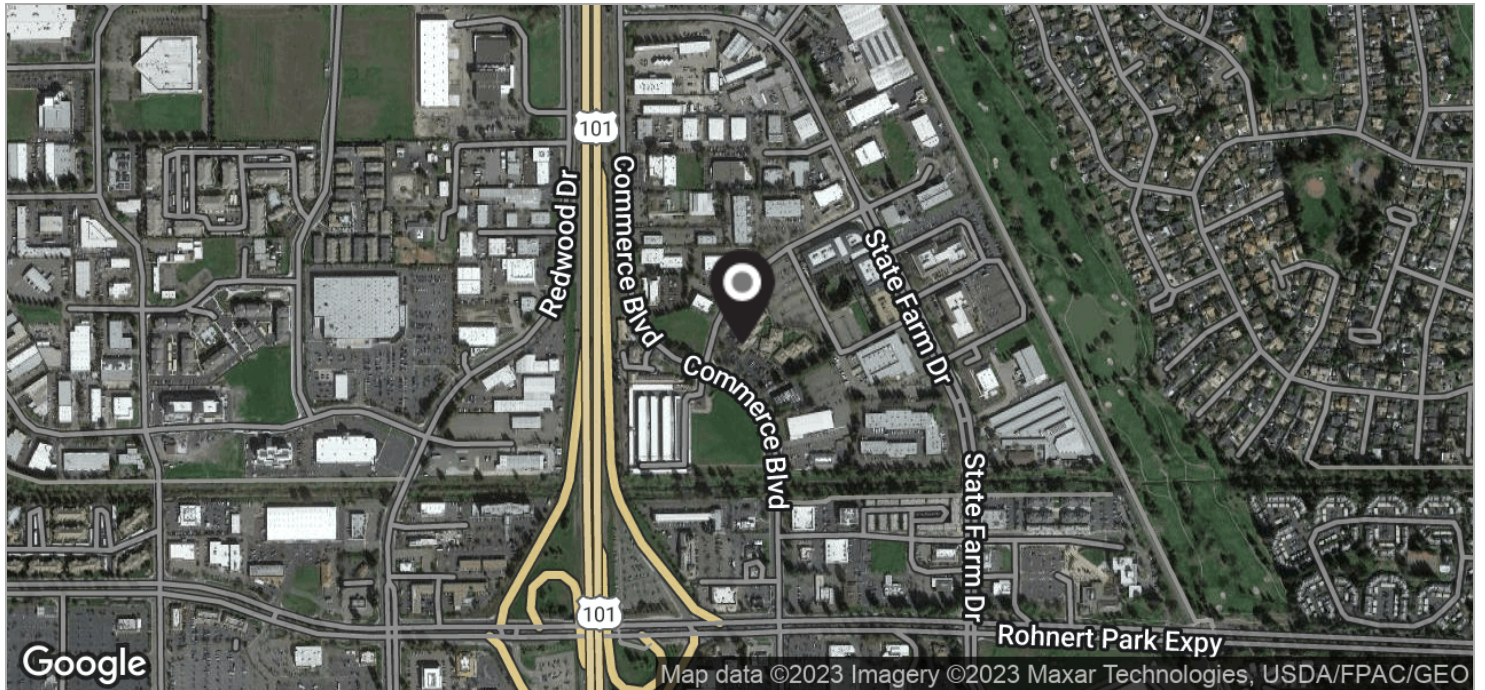


CARLOS RIVAS
707.483.1229
CARLOS@WREALESTATE.NET
CALDRE #00550273

OFFICE PROPERTY FOR LEASE

6010-6040 COMMERCE BOULEVARD, ROHNERT PARK, CA 94928

LOCATION MAPS

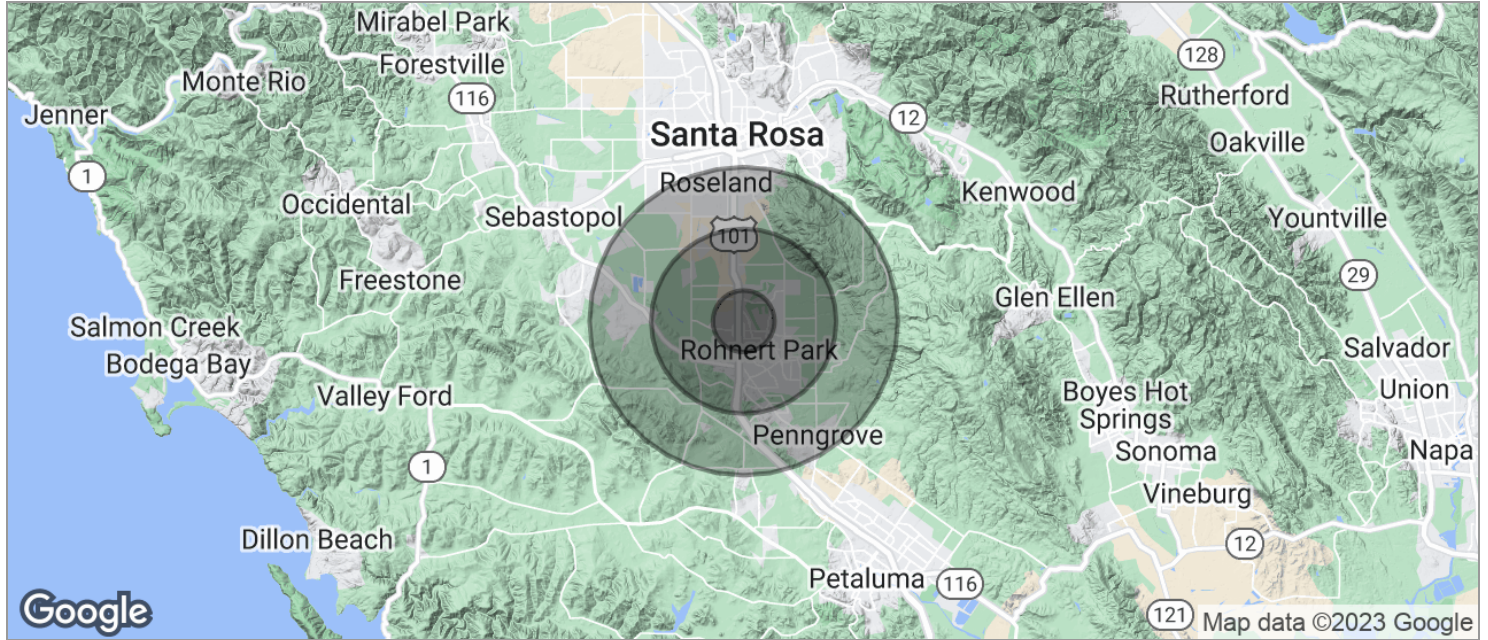


CARLOS RIVAS
707.483.1229
CARLOS@WREALESTATE.NET
CALDRE #00550273

OFFICE PROPERTY FOR LEASE

6010-6040 COMMERCE BOULEVARD, ROHNERT PARK, CA 94928

DEMOGRAPHICS MAP



POPULATION	1 MILE	3 MILES	5 MILES
TOTAL POPULATION	12,551	67,277	112,812
MEDIAN AGE	33.4	33.2	33.2
MEDIAN AGE (MALE)	33.3	32.3	32.3
MEDIAN AGE (FEMALE)	33.9	34.3	34.1
HOUSEHOLDS & INCOME	1 MILE	3 MILES	5 MILES
TOTAL HOUSEHOLDS	5,214	25,812	41,254
# OF PERSONS PER HH	2.4	2.6	2.7
AVERAGE HH INCOME	\$61,916	\$71,230	\$70,692
AVERAGE HOUSE VALUE	\$419,860	\$423,070	\$439,698

* Demographic data derived from 2020 ACS - US Census



CARLOS RIVAS
 707.483.1229
 CARLOS@WREALESTATE.NET
 CALDRE #00550273