

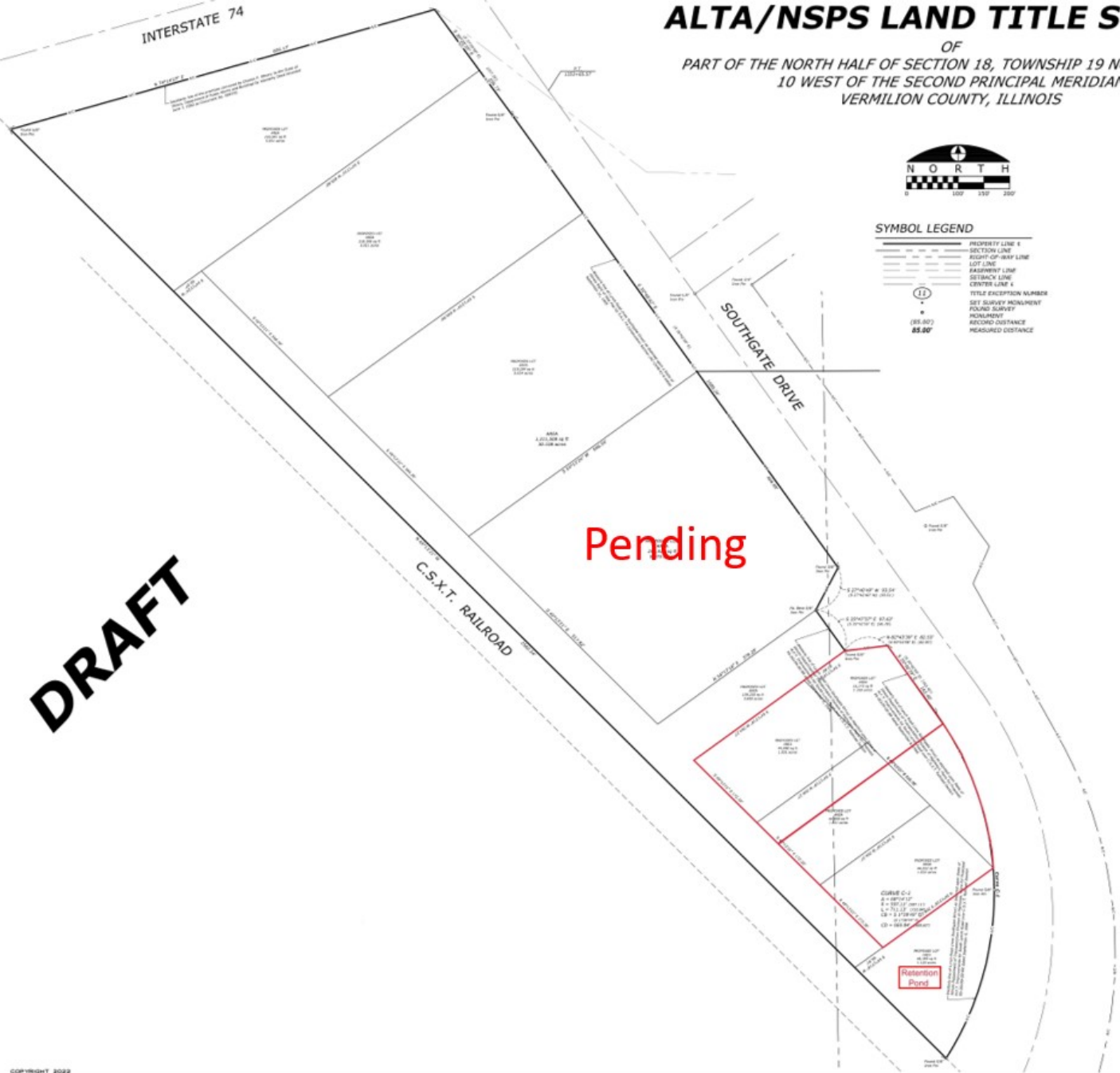
ALTA/NSPS LAND TITLE SURVEY

OF
PART OF THE NORTH HALF OF SECTION 18, TOWNSHIP 19 NORTH, RANGE
10 WEST OF THE SECOND PRINCIPAL MERIDIAN
VERMILION COUNTY, ILLINOIS



SYMBOL LEGEND

	PROPERTY LINE
	SECTION LINE
	RIGHT-OF-WAY LINE
	LOT LINE
	RAILROAD LINE
	SETBACK LINE
	CENTER LINE
	TITLE DESCRIPTION NUMBER
	SET SURVEY MONUMENT
	FOUND SURVEY MONUMENT
	MONUMENT
	RECORDED DISTANCE
	MEASURED DISTANCE



Pending

DRAFT