

SALE



LAND

5740 S EMERSON AVE



5740 S EMERSON AVE, INDIANAPOLIS, IN 46237

#### PROPERTY OVERVIEW

Commercially zoned ground with access from a 29,000+ VPD road. This site offers commercial development potential for offices, a school, or other use in a growing pocket of Indianapolis. With developments planned next door and quick access to I65 & I465, this site is ready for a commercial development.

#### PROPERTY HIGHLIGHTS

- ± 1.80 acre Commercial Development Land
- Zoned C1
- Medical, Business, or Professional Office uses
- High traffic counts and visibility on Emerson Ave
- Adjacent to future residential development



SALE PRICE

\$270,000

Lot Size:

± 1.80 Acres



**BRADLEY COMPANY**  
310 E. 96th St., Suite 100  
Indianapolis, IN 46240  
317.663.6000

**NATHAN SCHLABACH**  
Broker | Land Specialist  
317.366.1513  
nschlabach@bradleyco.com

**SAM KAROZOS**  
Vice President  
317.371.0128  
skarozos@bradleyco.com

**MICHAEL HERRIGAN, SIOR**  
Senior Vice President | Director of Land Services  
317.439.3452  
mherrigan@bradleyco.com



BRADLEYCO.COM

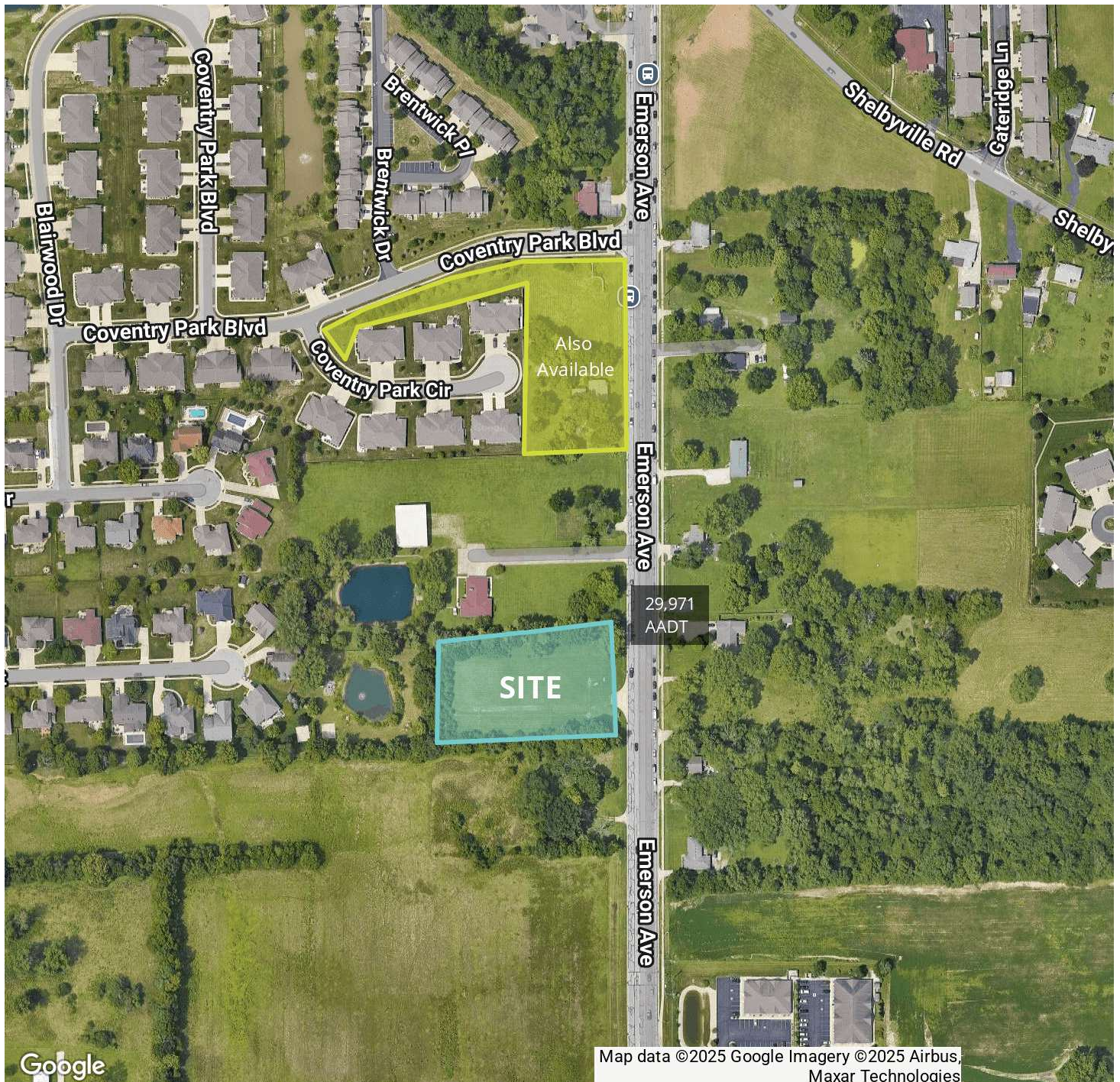




5740 S EMERSON AVE, INDIANAPOLIS, IN 46237

SALE

LAND



**NATHAN SCHLABACH**  
Broker | Land Specialist  
317.366.1513  
nschlabach@bradleyco.com

**SAM KAROZOS**  
Vice President  
317.371.0128  
skarozos@bradleyco.com

**MICHAEL HARRIGAN, SIOR**  
Senior Vice President | Director of Land Services  
317.439.3452  
mharrigan@bradleyco.com





# SALE

LAND



©2025 Bradley Company, LLC and affiliates. Use of any third party name or mark is for informational purposes only and does not indicate sponsorship or endorsement by such party. Not all information has been independently verified, and the presenting broker makes no guarantee about its accuracy. Any projections, opinions, or estimates are for example only. Before completing a real estate transaction, you and your advisors should conduct an independent investigation of the property to determine its suitability for your needs.