

# FOR LEASE: PEARL DISTRICT CREATIVE COMMERCIAL SPACES

334 NW 11th Avenue - Portland Oregon

**12 Months Free  
Rent!**

COMMERCIAL  
BLACK



*Maximizing Value with Market Knowledge*

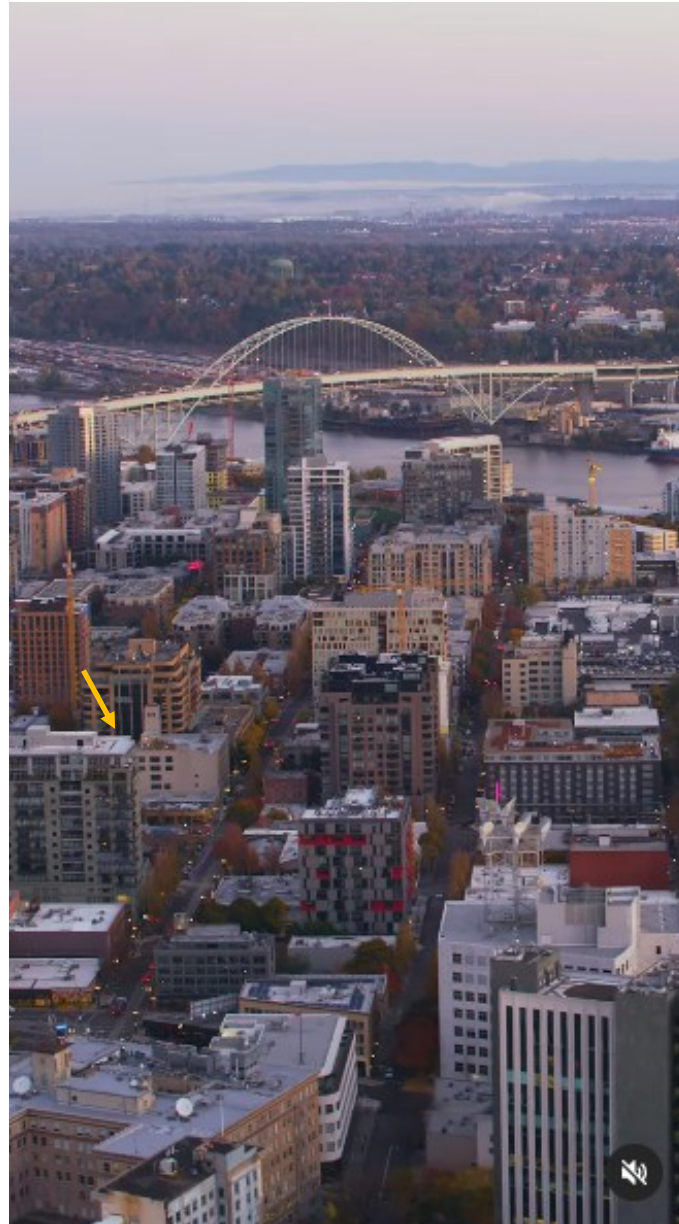


# RENDERING — CONCEPT





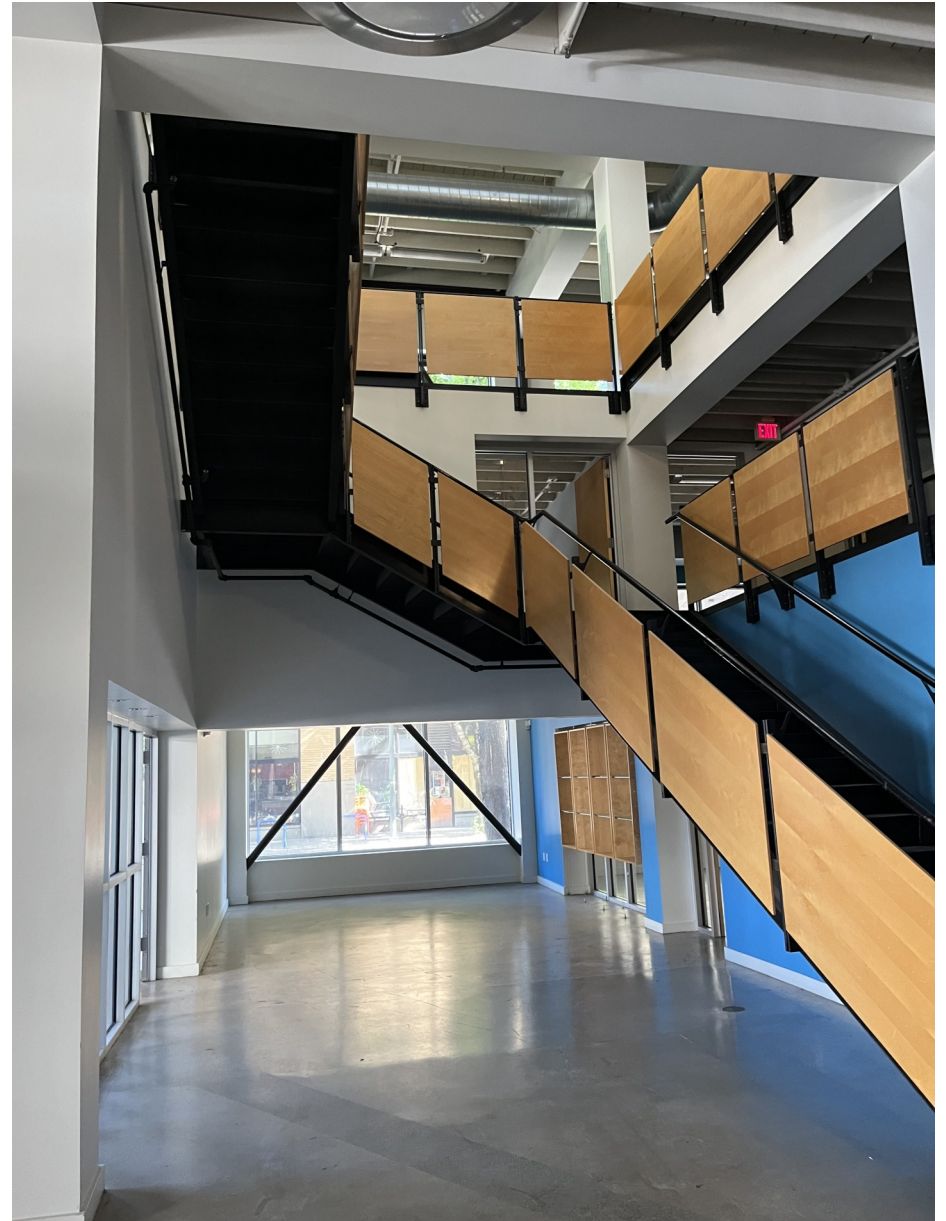
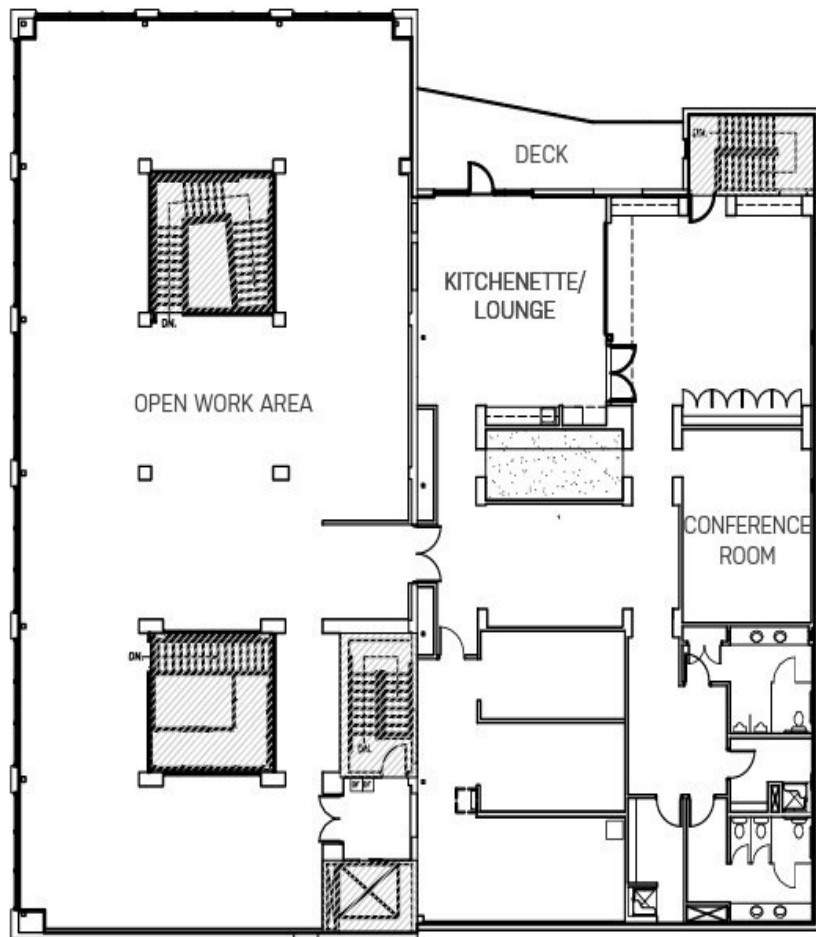
# NORTHWEST PORTLAND OREGON - PEARL DISTRICT





**+/- 13,230 TOTAL SQUARE FEET - SEVERAL OPTIONS FOR MULTIPLE USES**

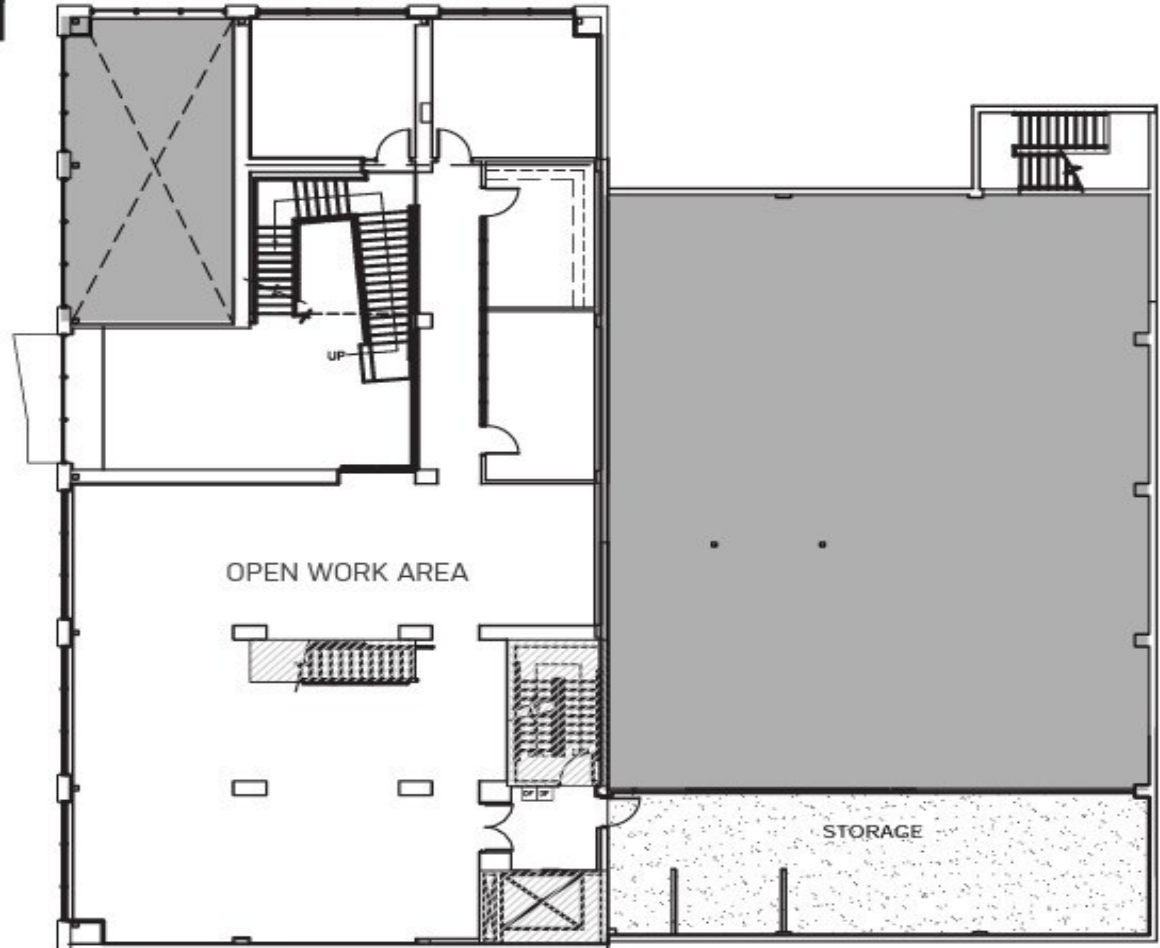
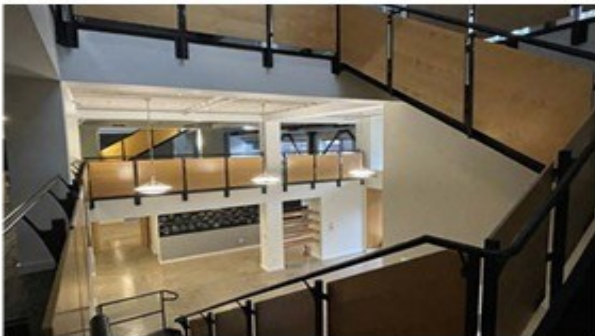
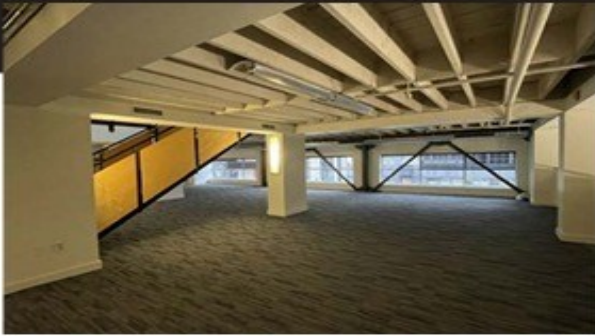
THIRD FLOOR PLAN  
**± 8,798 SF**



# 334 NW 11th Avenue - Portland Oregon

## SECOND FLOOR PLAN

± 4,432 SF





- ⇒ Creative office / Flex and retail space available
- ⇒ Ultra urban Pearl District location - Area hub for restaurants, shopping, and entertainment
- ⇒ Located on the 11th Ave street car line and close access to freeways
- ⇒ High ceilings and exposed beams
- ⇒ Abundant natural light
- ⇒ Men's and Women's Showers
- ⇒ Secured bike storage
- ⇒ Outdoor Patio
- ⇒ Multiple kitchen areas
- ⇒ Ample power: 3 phase 1200 AMPs
- ⇒ Up to 13,250 SF Available - Divisible
- ⇒ Improvement allowance available
- ⇒ Free rent available with agreed upon terms
- ⇒ ONSITE PARKING IS IN THE PROCESS OF PERMITTING WITH THE CITY
- ⇒ \$22.00 Per SF Gross



**COMMERCIAL  
BLACK.**

John Gibson - Licensed Oregon Principal Broker  
 OR# 971000078  
 2393 SW Park Place #110  
 Portland, OR 97205  
 503.860.3267  
[john.gibson@commercialblack.com](mailto:john.gibson@commercialblack.com)  
[www.commericalblack.com](http://www.commericalblack.com)