

10190 PLYMOUTH ROAD  
PLYMOUTH, MICHIGAN

INDUSTRIAL FOR SALE OR LEASE  
6,734 Square Feet Available



**SIGNATURE  
ASSOCIATES**  
KNOW SIGNATURE | KNOW RESULTS



## PROPERTY FEATURES

- 6,734 square feet available
- 5+ acres for landscaping or similar businesses
- Ideal for businesses seeking to expand operations or establish a convenient satellite location
- Private steel gate entrance for enhanced security with restricted access, ensuring peace of mind for your assets
- Prominent Plymouth Road signage – high-visibility location for easy client access and branding opportunities
- Short term lease thru Fall 2026: \$7,500/month Gross
- Sale Price: \$1,600,000



For more information, please contact:

**STEVE GORDON**  
(248) 948 0101  
sgordon@signatureassociates.com

**DRAKE FILIPPIS**  
(248) 799 3161  
dfilippis@signatureassociates.com

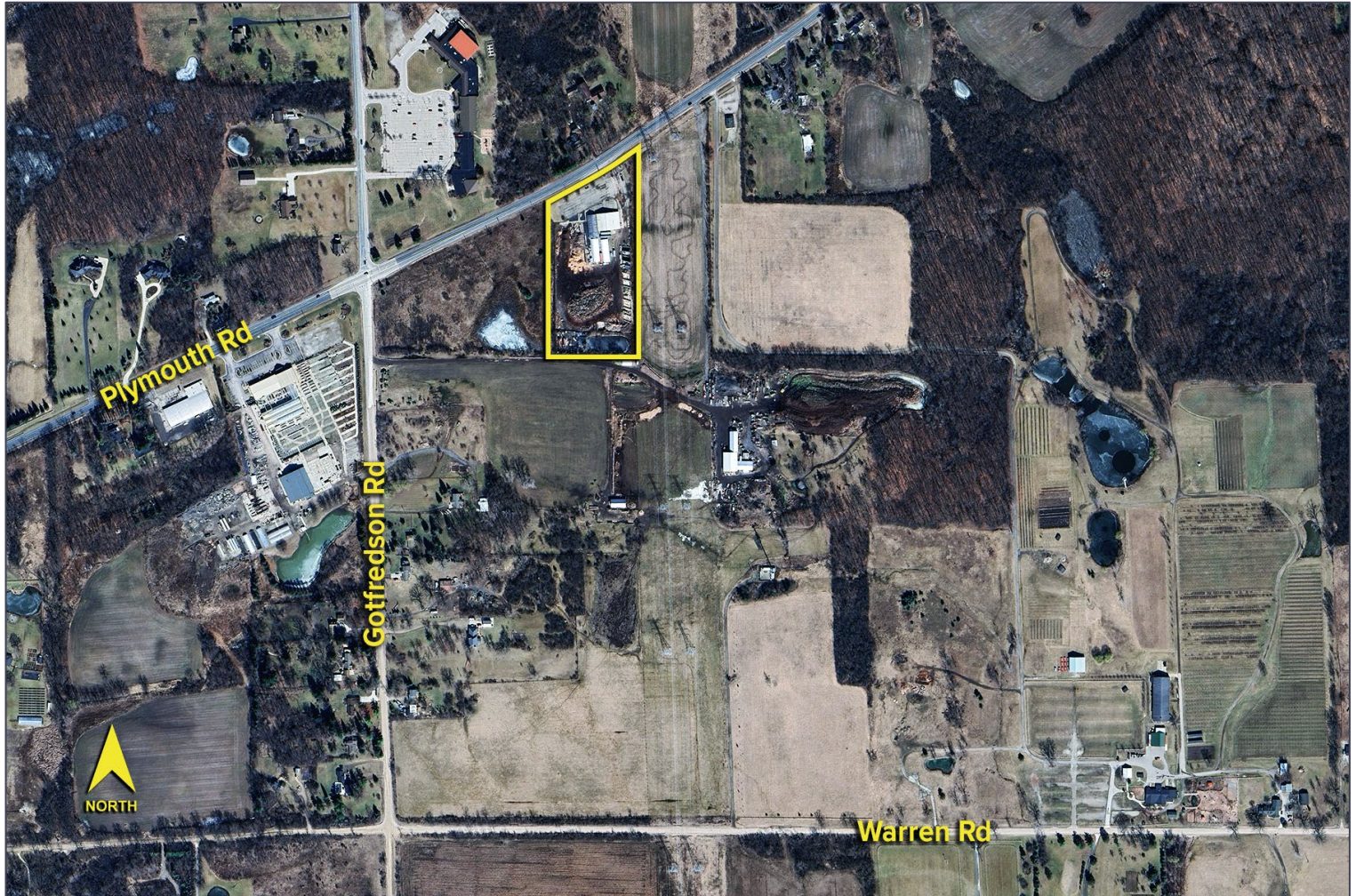
**SIGNATURE ASSOCIATES**  
One Towne Square, Suite 1200  
Southfield, MI 48076  
www.signatureassociates.com

# 10190 Plymouth Road – Plymouth, Michigan

Industrial For Sale or Lease

6,734  
Square Feet  
AVAILABLE

Aerial



For more information, please contact:

**STEVE GORDON**

(248) 948 0101

[sgordon@signatureassociates.com](mailto:sgordon@signatureassociates.com)

**DRAKE FILIPPIS**

(248) 799 3161

[dfilippis@signatureassociates.com](mailto:dfilippis@signatureassociates.com)

**SIGNATURE ASSOCIATES**

One Towne Square, Suite 1200

Southfield, MI 48076

[www.signatureassociates.com](http://www.signatureassociates.com)