

CALGARY | AB  
OFFICE FOR LEASE

# FOUNTAIN COURT

709 64 Avenue SE

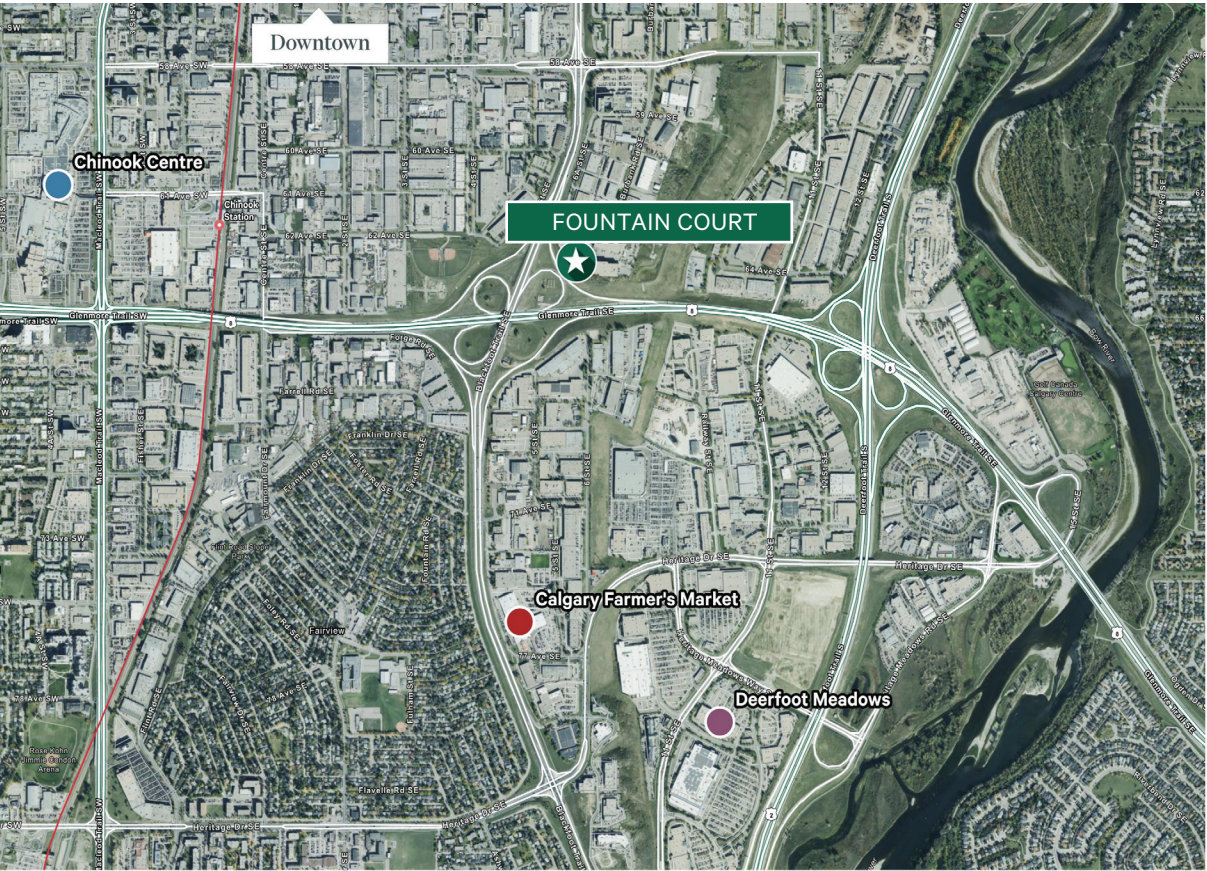
**centron**  
REAL ESTATE DEVELOPMENT & CONSTRUCTION

**CBRE**



# Amenity-rich & Connected Community

Welcome to Fountain Court, a premier office space strategically located right on Blackfoot Trail. This prime location offers unparalleled accessibility, with Chinook Mall and Deerfoot Meadows just moments away, providing a variety of shopping and dining options for you and your team. The Calgary Farmers Market, featuring over 80 local vendors, is only a quick 5-minute drive, making it easy to enjoy fresh, local goods. Plus, with Downtown Calgary just a 12-minute drive away, you'll be in the heart of the city's vibrant business and cultural scene. Elevate your workspace at Fountain Court, where convenience meets opportunity!



For reference only. This information has been obtained from sources believed reliable, but has not been verified for accuracy or completeness. You should conduct a careful, independent investigation of the property and verify all information. Any reliance on this information is solely at your own risk. No service marks of CBRE, Inc. All other marks displayed on this document are the property of their respective owners, and the use of such logos does not imply any affiliation with or endorsement of CBRE.

EAT & DRINK
Avocado Mexican Grill
Blackfoot Inn
Dairy Queen
Fatburger
Five Guys Burgers
Jugo Juice
Le's Pho Noodlehouse
Moxie's Classic Grill
OPA! Souvlaki
Starbucks
Subway
Taco Time
Extreme Pita
Boston Pizza
Tim Hortons
Wendys
McDonalds
Ricky's All Day Grill
Via Cibo
SHOP
Calgary Farmers Market
Co-Op Liquor Store
Real Canadian Superstore
Wal-Mart
Costco
Banana Republic Factory Store
Gap Factory Store
Mark's Work Warehouse
Triple Flip
Moore's Clothing for Men
ECCO Shoes
SERVICES
Goodlife Fitness
ATB Financial
Goodlife Fitness
Great Clips
Chatters Salon
Sandman Hotel
Money Mart
The UPS Store
H&R Block



# On-site Fitness Facility





# Property Details.

ADDRESS	Building 3, 709 64 Avenue SE
BUILDING CLASS	A
AVG. FLOOR PLATES	14,754 SF
SURFACE PARKING	253 Stalls, 2.8 Stalls/1,000 SF
BIKE PARKING	Enclosed
NET RENT	Contact Listing Agent
FIBER OPTICS	Telus and Shaw
ADD. RENT	\$13.08

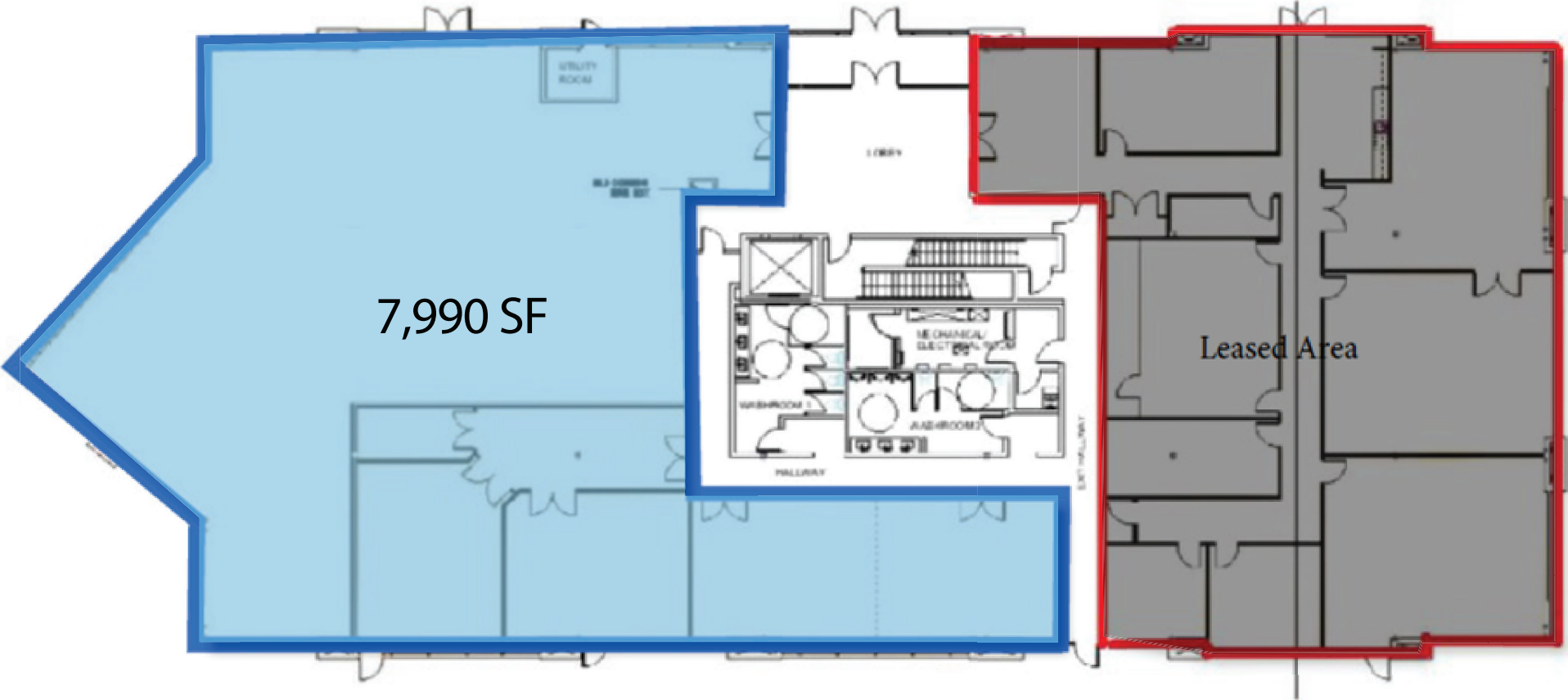
AVAILABLE FOR LEASE:

BUILDING	SUITE	SIZE (SF)	AVAILABILITY
3	153	7,990	October 1, 2025



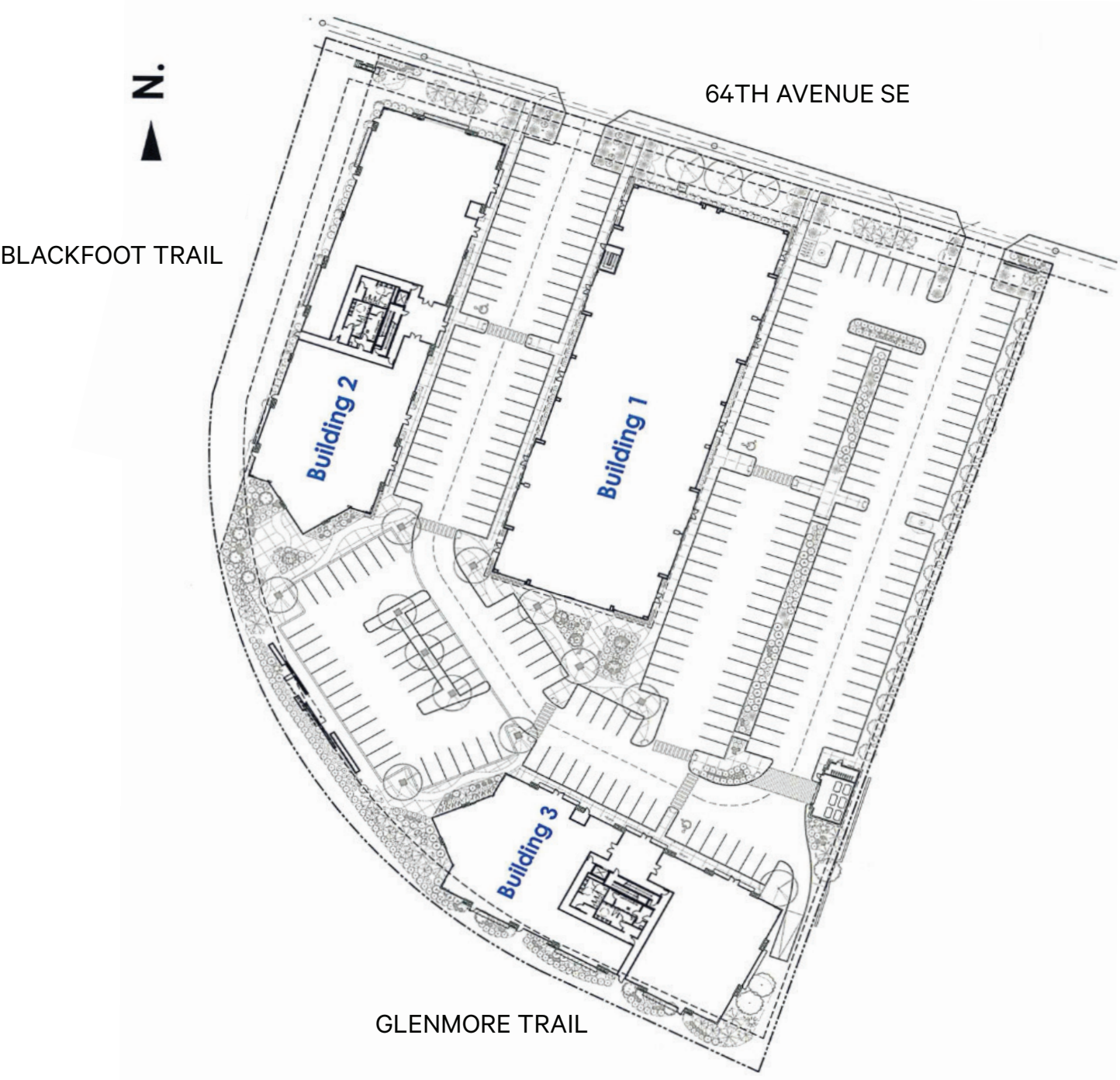


# Suite 153





# Site Plan







# FOUNTAIN COURT

For more information, please contact:

**Stuart Watson**  
Senior Vice President  
T 403 750 0540  
[stuart.watson@cbre.com](mailto:stuart.watson@cbre.com)

**Katie Sapieha**  
Senior Vice President  
T 403 750 0529  
[katie.sapieha@cbre.com](mailto:katie.sapieha@cbre.com)

© CBRE, Inc. This disclaimer shall apply to CBRE Limited, Real Estate Brokerage, and to all other divisions of the Corporation; to include all employees and independent contractors ("CBRE"). The information set out herein, including, without limitation, any projections, images, opinions, assumptions and estimates obtained from third parties (the "Information") has not been verified by CBRE, and CBRE does not represent, warrant or guarantee the accuracy, correctness and completeness of the Information. CBRE does not accept or assume any responsibility or liability, direct or consequential, for the Information or the recipient's reliance upon the Information. The recipient of the Information should take such steps as the recipient may deem necessary to verify the Information prior to placing any reliance upon the Information. The Information may change and any property described in the Information may be withdrawn from the market at any time without notice or obligation to the recipient from CBRE. CBRE and the CBRE logo are the service marks of CBRE Limited and/or its affiliated or related companies in other countries. All other marks displayed on this document are the property of their respective owners. All Rights Reserved. Mapping Sources: Canadian Mapping Services [canadamapping@cbre.com](mailto:canadamapping@cbre.com); DMTI Spatial, Environics Analytics, Microsoft Bing, Google Earth.