



3474 Alaiedon Pkwy

Okemos, Michigan 48864

Property Highlights

- Ample Free Parking
- December 24' Occupancy
- Negotiable lease term
- Located at the Jolly Rd/Okemos Rd/I-96 Interchange
- Located near Banks, Restaurants, Hotels and other Interchange Services

Offering Summary

Lease Rate:	\$15.00 SF/yr (MG)
Building Size:	12,492 SF
Available SF:	719 - 3,072 SF
Lot Size:	1.1 Acres

Spaces	Lease Rate	Space Size
Suite 100	\$15.00 SF/yr	3,072 SF
Suite 200	\$15.00 SF/yr	2,943 SF
Suite 400	\$15.00 SF/yr	719 SF

For More Information

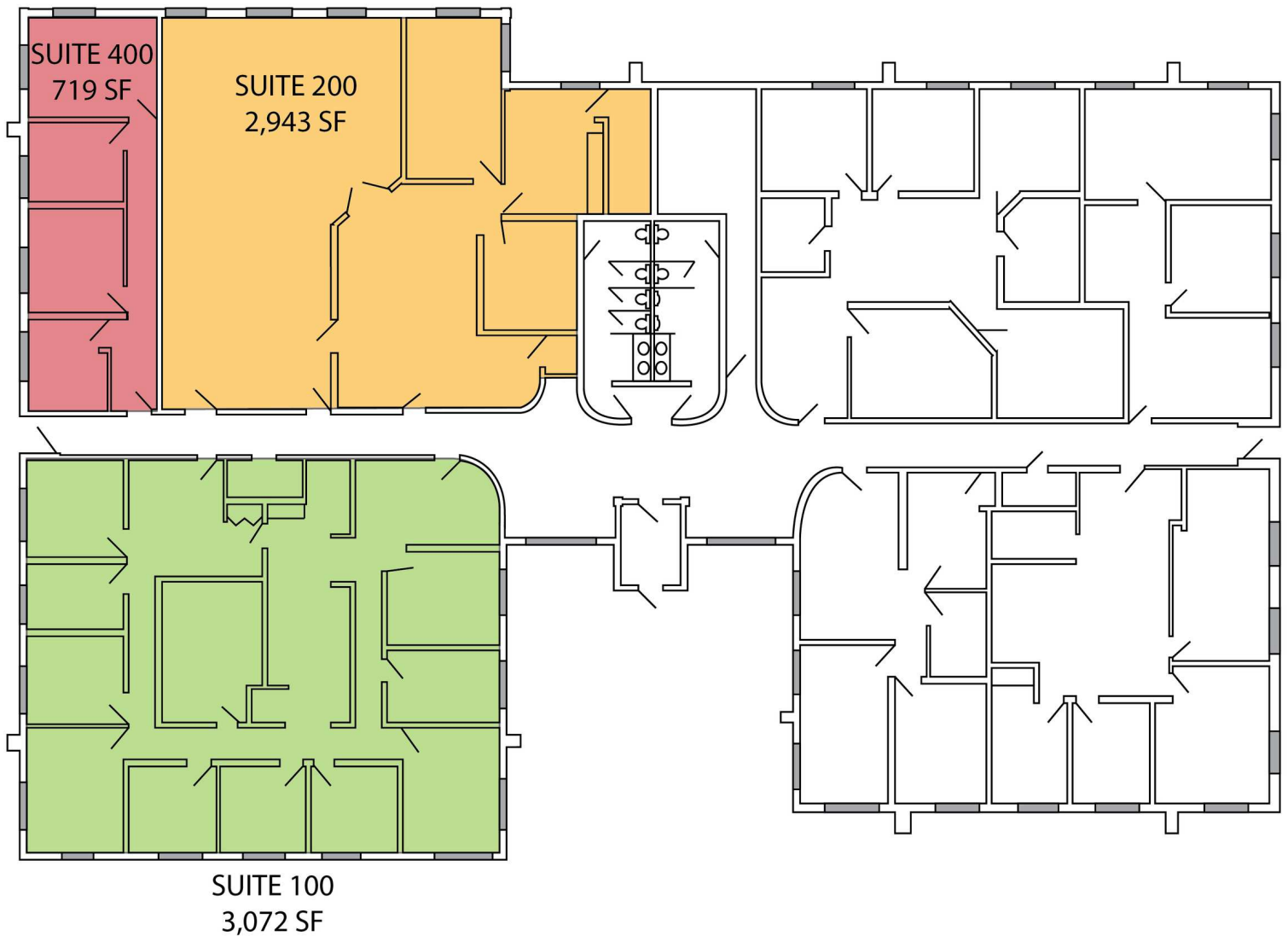


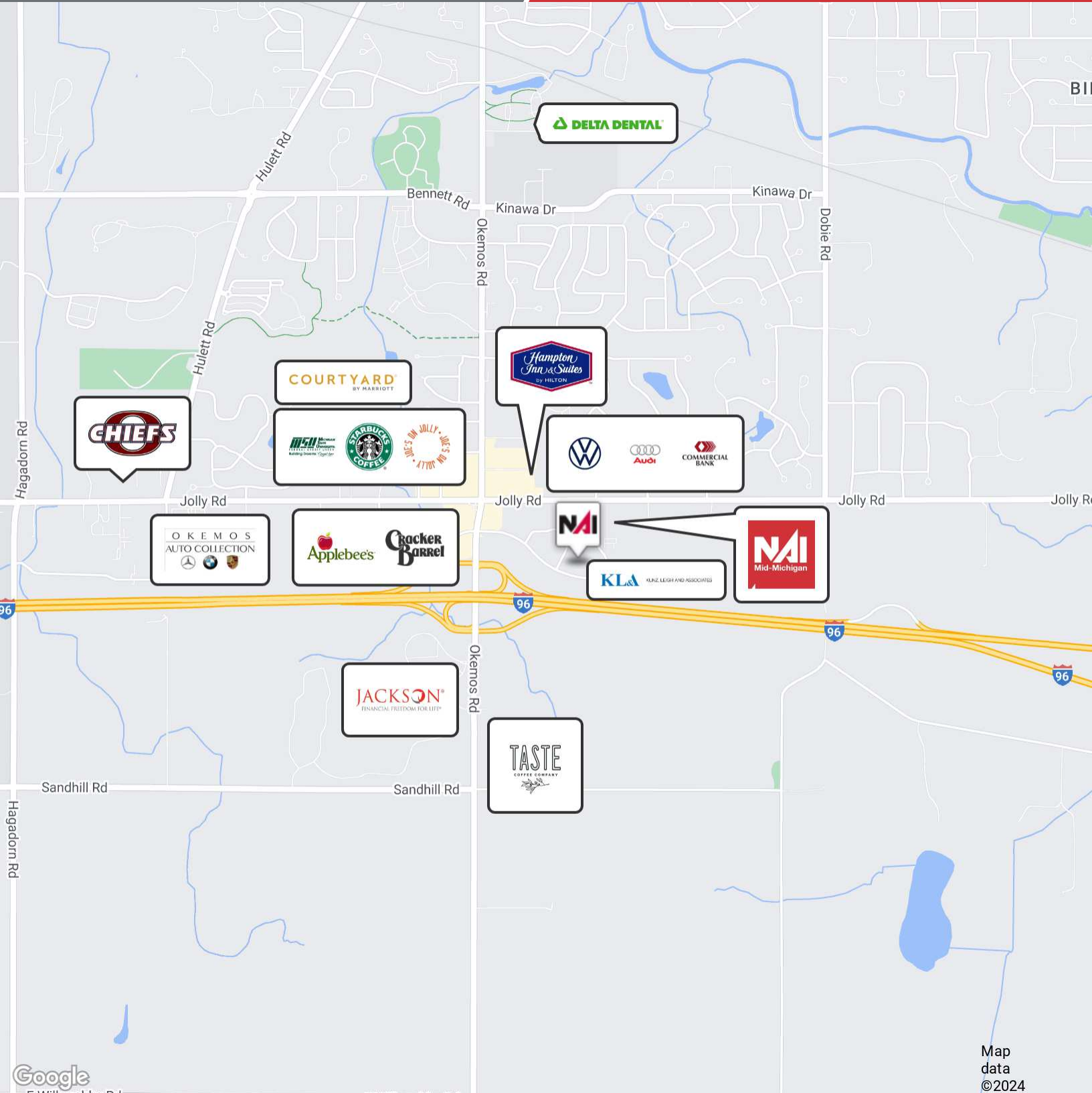
Steve Slater

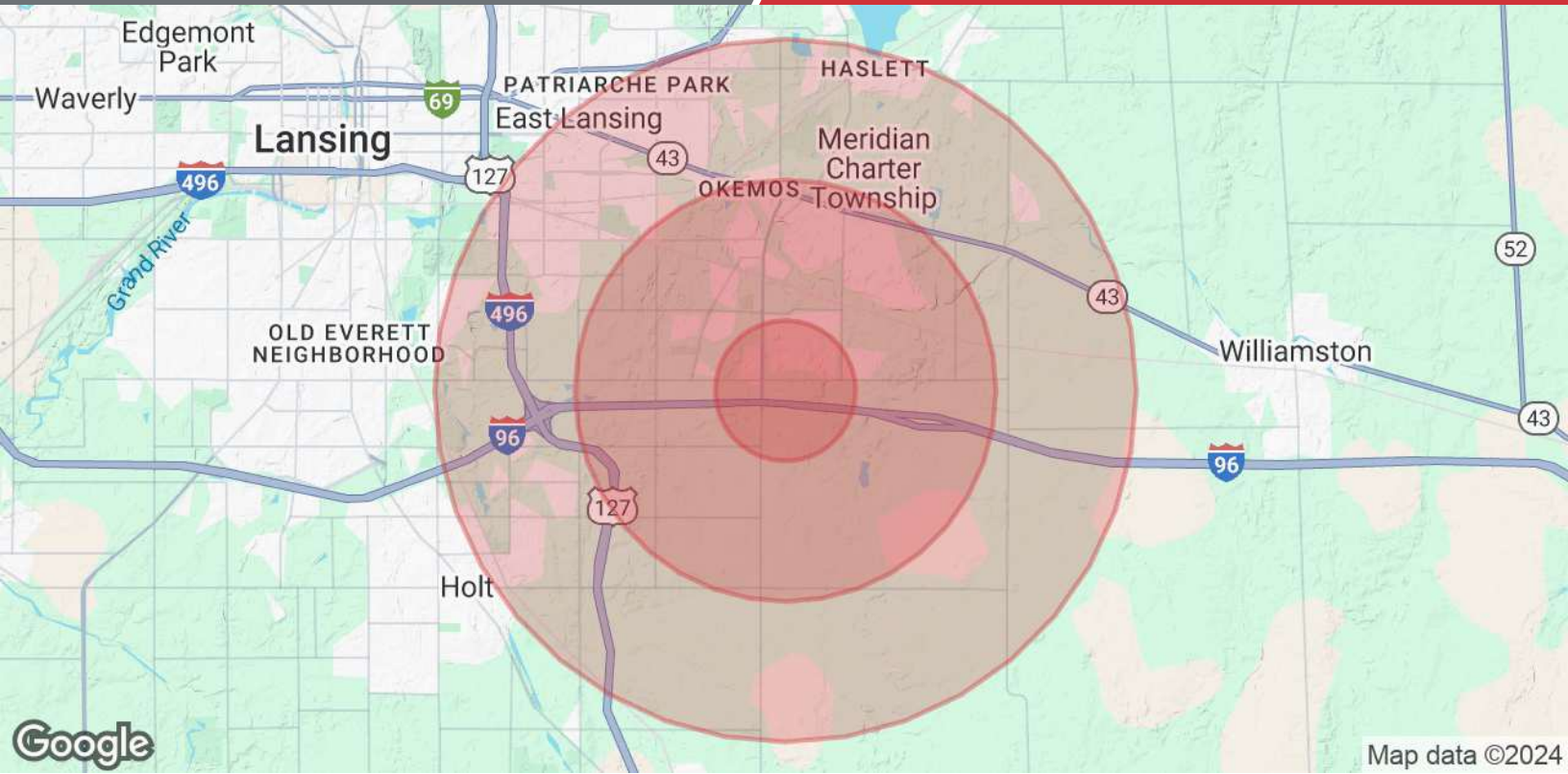
Associate Broker

O: 517 487 9222 | C: 517 749 7914

steveslater@naimidmichigan.com







Population	1 Mile	3 Miles	5 Miles
Total Population	3,764	21,824	79,805
Average Age	40	40	35
Average Age (Male)	40	39	34
Average Age (Female)	41	40	36
Households & Income	1 Mile	3 Miles	5 Miles
Total Households	1,378	8,623	29,723
# of Persons per HH	2.7	2.5	2.7
Average HH Income	\$150,223	\$136,918	\$98,480
Average House Value	\$429,308	\$381,031	\$268,452

Demographics data derived from AlphaMap