








## ABOUT THE PROPERTY

DAI Commercial Realty, LLC is excited to offer a new centrally located office space in Savannah. 315 Commercial Drive, unit D6 is on the second floor of the Regency Executive Plaza on Commercial Drive, between busy Eisenhower Drive and Hodgson Memorial Drive. This 1,205-square-foot unit is furnished and ready for immediate occupancy. It consists of a reception area, five private offices, one restroom, a storage/file area, and a kitchenette.

## HIGHLIGHTS

-  \$20 PER SF NNN
-  1,205 SQ FT
-  OFFICE
-  OFF STREET PARKING
-  QUICK ACCESS TO  
EISENHOWER DR., WATERS  
AVE. , ABERCORN ST. AND  
TRUMAN PARKWAY

### KATIE CHANCY

Managing Broker

O: (912) 944-4410 | M: (912) 308-3111

k.chancy@daicommercial.com

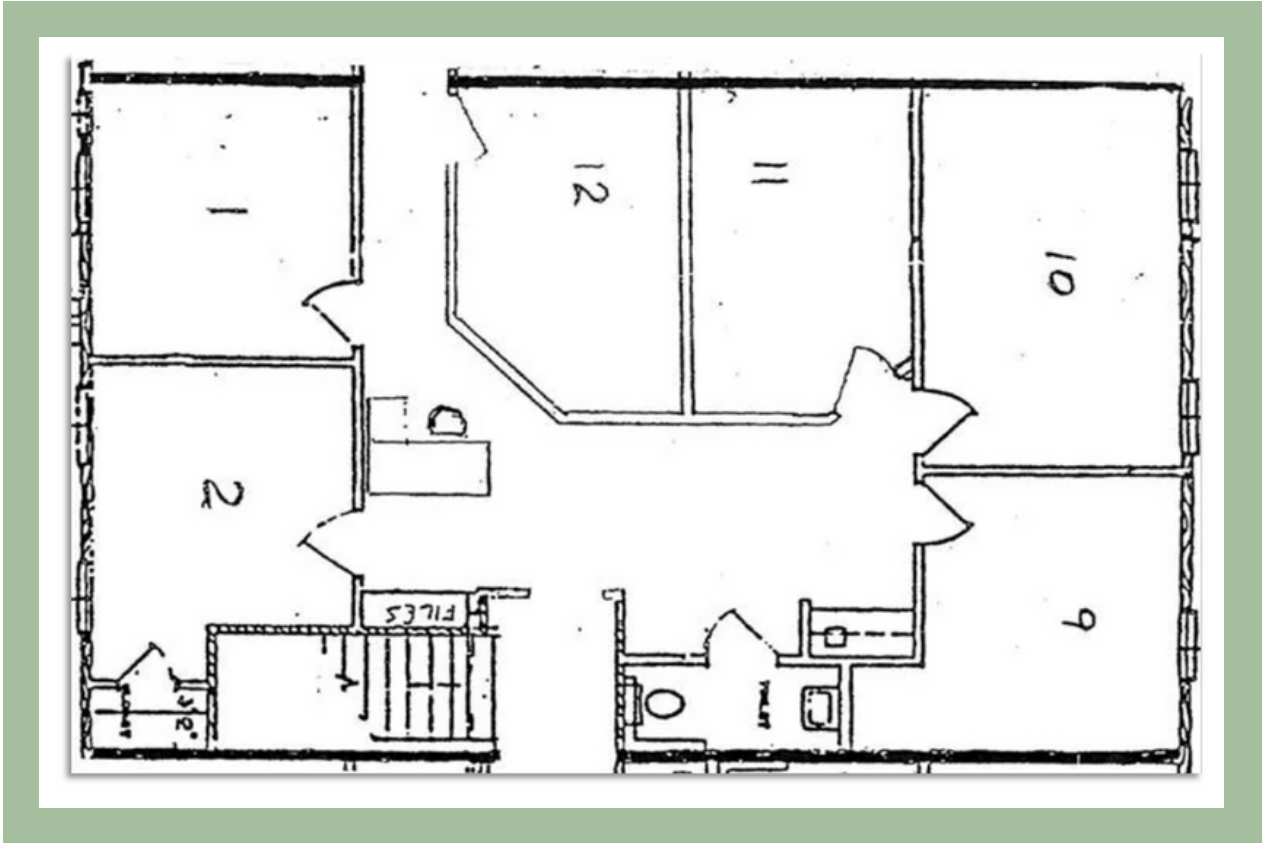
### CARLA SIMERLY

Associate

O: (912) 944-4410 | M: (912) 663-1949

csimerly@daicommercial.com

## SECOND FLOOR OFFICE D-6 FLOOR PLAN



## LOCATION MAP



## PROPERTY IMAGES



**KATIE CHANCY**

Managing Broker

O: (912) 944-4410 | M: (912) 308-3111

k.chancy@daicommercial.com

**CARLA SIMERLY**

Associate

O: (912) 944-4410 | M: (912) 663-1949

csimerly@daicommercial.com