

FOR SUBLEASE



Prime office space for Sublease

252 - 264 ADELAIDE ST E, TORONTO, ON M5A 1N1

SPACE PROFILE

1,948 SF

Total SF

Immediate

Availability

Contact Listing Agents

Rental rate

\$25.84

Additional Rent

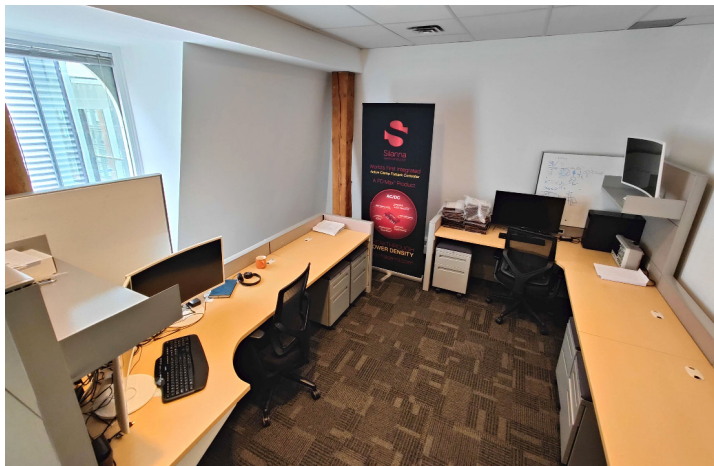
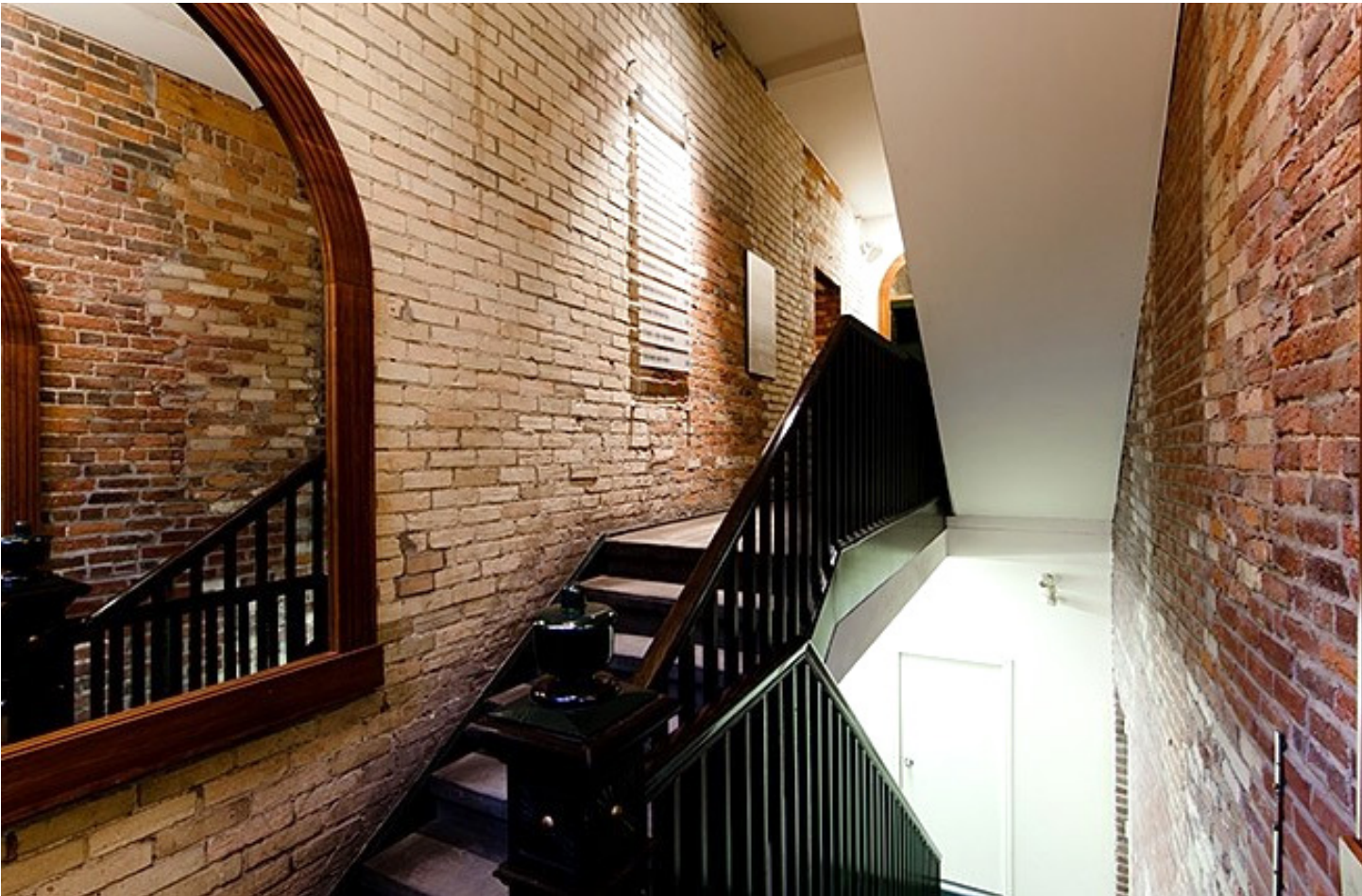
Nov 30, 2026

Term Expiry

Available

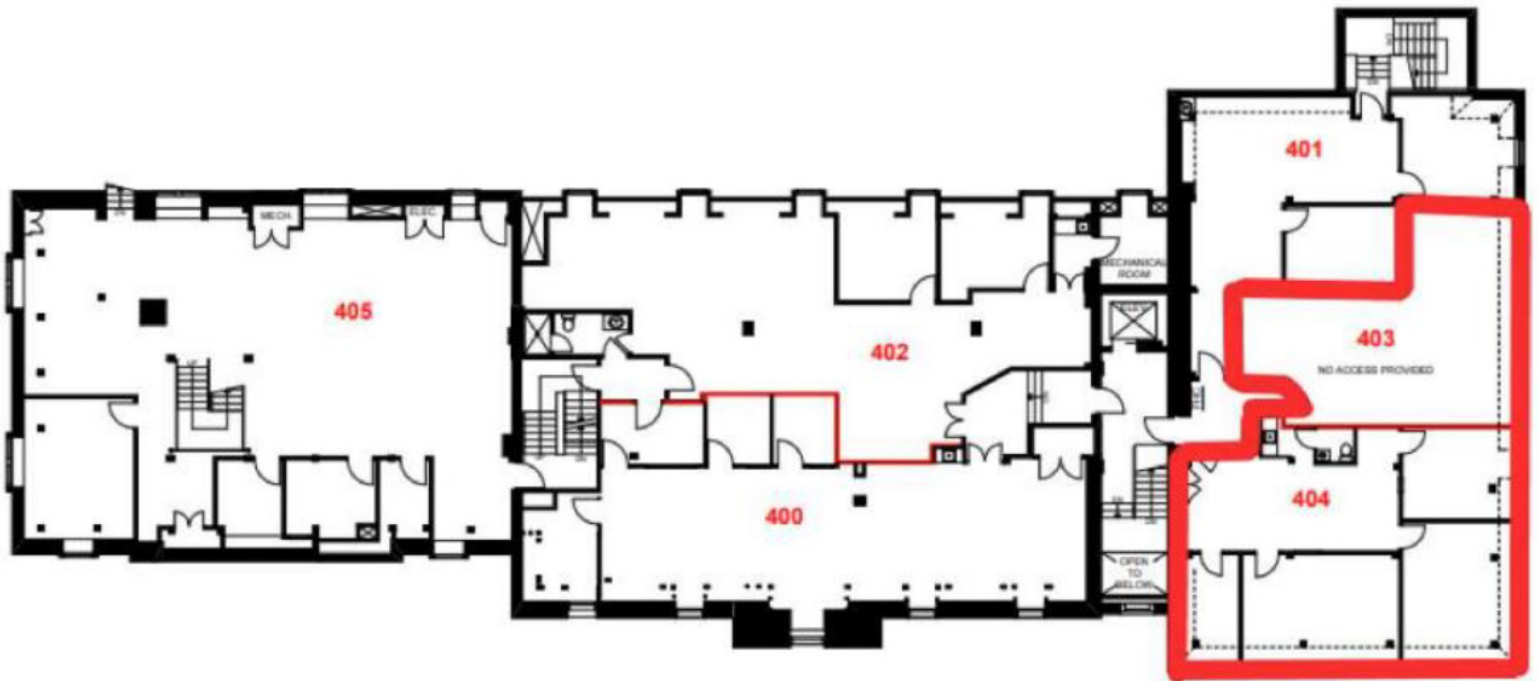
Furniture

savills



Suite 403 & 404

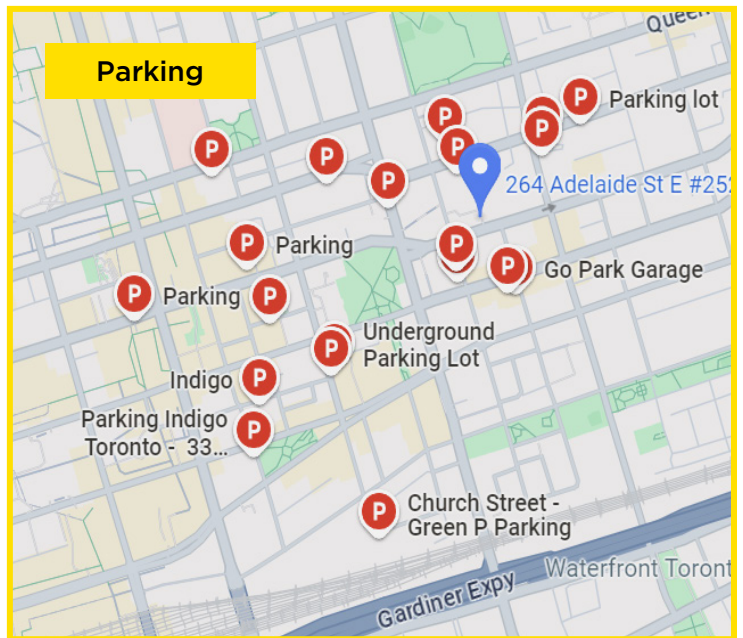
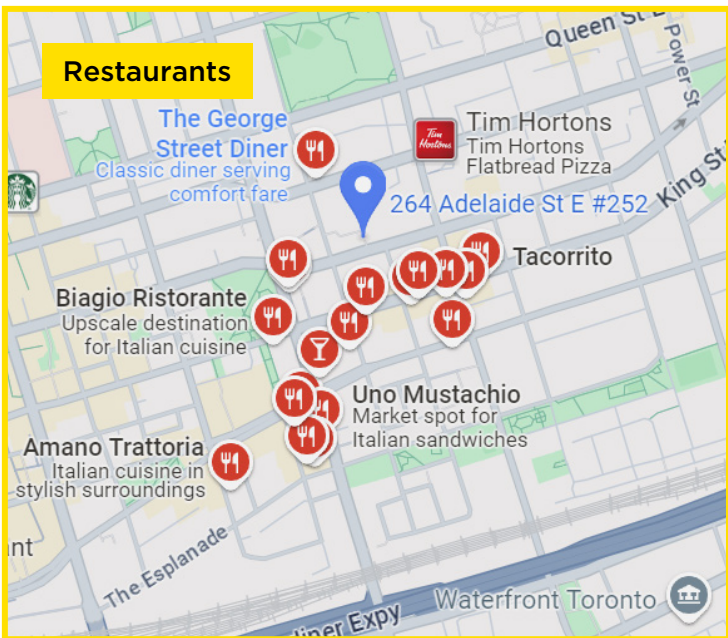
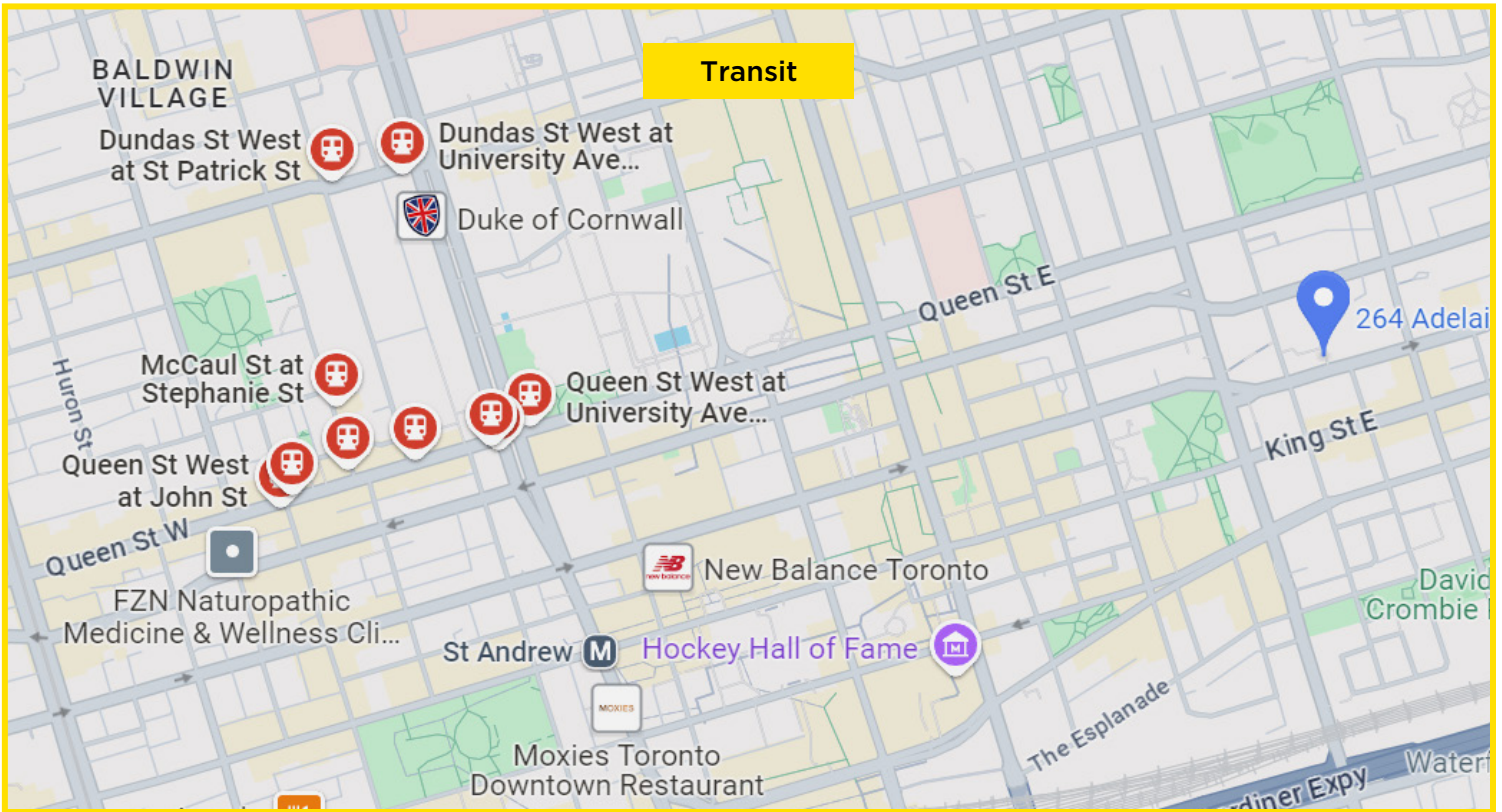
1,948 SF Available



KEY HIGHLIGHTS

- Ideal for dynamic professionals seeking a strategic location in the heart of Toronto's King Street East neighborhood
- Exposed brick and beam with high vaulted ceilings
- A mix of both private offices and open workstations
- Available furnished or unfurnished
- Fully equipped kitchen
- Within walking distance to an abundance of restaurant and amenities, including the Distillery District
- Green P parking through the neighborhood
- 5-minute walk to PATH, 16-minute walk to Union Station, 2-minute walk to the streetcar [504 King], and 9-minute walk to King Subway Station

Amenities Map



LOCATION

Walk Score® | 99 Walker's Paradise
 Transit Score® | 100 Rider's Paradise
 Bike Score® | 76 Very Bikeable
 Less than a three-minute walk to streetcars

HEALTH & WELLNESS

Optimal Body Fitness
 GoodLife Fitness
 Wynn Fitness Clubs
 Body + Soul Fitness

SERVICES

TD Canada Trust
 BMO Bank of Montreal
 RBC Royal Bank
 CIBC

Savills Inc.
181 Bay Street, Suite 2800
Toronto, ON M5J 2T3
(416) 480 0745

Matt Finn*

Sales Associate
mfinn@savills.ca
+1 647 202 6247

James Butchard*

Executive Vice President
jbutchard@savills.ca
+1 416 454 7200

*Sales Representative **Broker

© 2024 Savills. All rights reserved. The information contained in this communication has been obtained from a variety of sources believed to be reliable but has not been verified. NO WARRANTY OR REPRESENTATION, EXPRESS OR IMPLIED, IS MADE AS TO THE CONDITION OF THE PROPERTY OR ACCURACY OR COMPLETENESS OF THE INFORMATION CONTAINED HEREIN AND SAME IS SUBMITTED SUBJECT TO ERRORS, OMISSIONS, CHANGE OF PRICE, RENTAL OR OTHER CONDITIONS, WITHDRAWAL WITHOUT NOTICE AND TO ANY SPECIFIC CONDITIONS IMPOSED BY THE PROPERTY OWNER OR LESSOR.