

Hollywood

NEAL
GOLUB
Vice President
Lic. 01023733
+1 310 550 2667
neal.golub@cbre.com

CBRE

ROSS ANCHORED SHOPPING CENTER THE CORNER OF SUNSET & LA BREA



FOR LEASE

7040-F W. SUNSET BLVD
LOS ANGELES, CA 90028



SPACE DETAILS

SEEKING PROMINENT RETAIL USERS

On one of the world's most famous streets and at the hard South East Corner of Sunset Blvd and La Brea Ave. Hollywood's Sunset Boulevard is filled with unique retail, restaurants, and nightlife. Join an opportunity to be on one of the most car trafficked corners in the city alongside neighbors such as Tacos El Gavilan, Ross, Dunn Edwards Paint, 7-Eleven, Subway, H&R Block and many more!



ASKING RATE

\$3.35PSF/Mo. NNN
(NNN Est. \pm \$1.98PSF/Mo.)



TYPE

Retail



VACANT

Now
Available



SQUARE

FEET
 \pm 1,118 SF



LOCATION

7040-F W. Sunset Blvd
Los Angeles, CA 90028



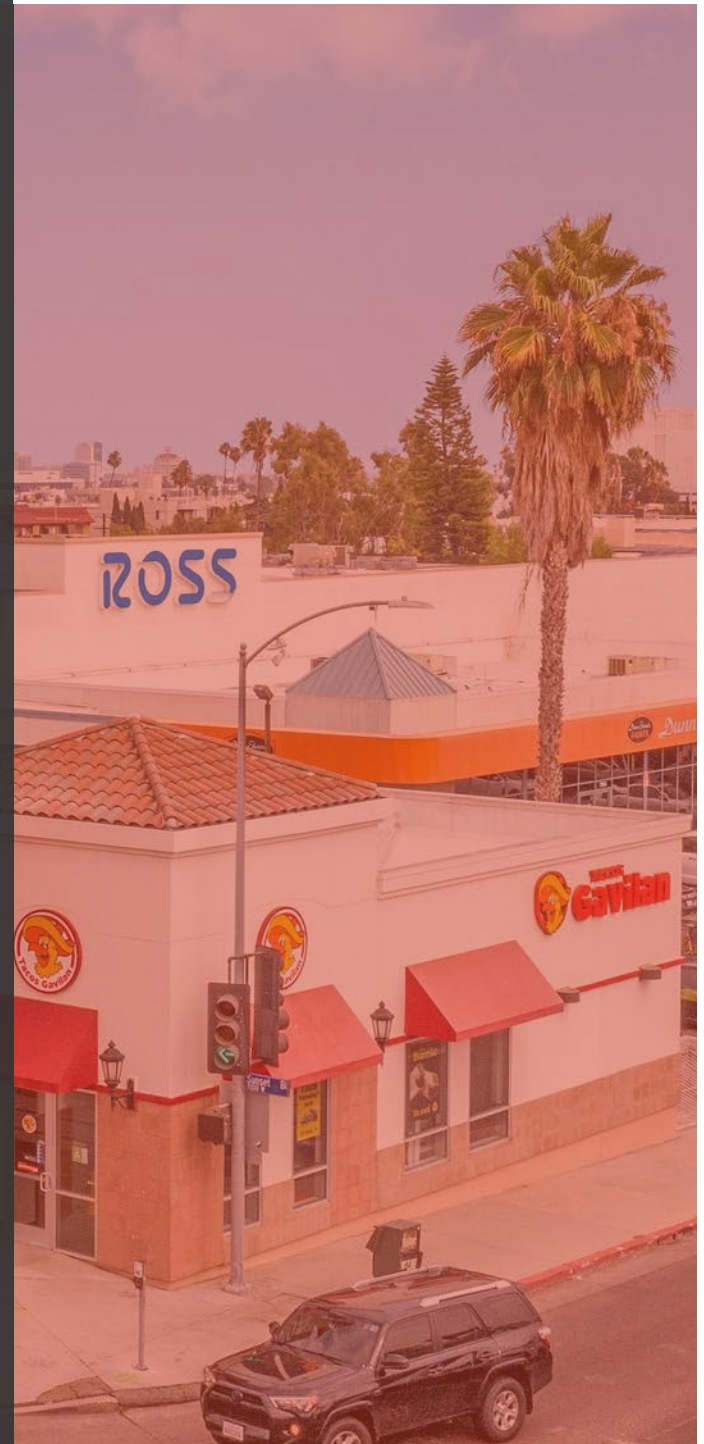
PARKING

Plentiful
On-site Parking



CAR/FOOT TRAFFIC

Huge Car Traffic
Over 100,000 Cars / Day
High Foot Traffic Corner



SIGNAGE



FABULOUS POLE SIGNAGE AVAILABLE!



YOUR SIGN HERE

ANCHOR CO-TENANTS



THE AREA



STRONG INCOME DEMOS

POPULATION

1 MILE 51,230

3 MILE 283,832

5 MILE 855,558

AVG HOUSEHOLD INCOME

1 MILE \$94,774

3 MILE \$113,399

5 MILE \$101,440

HOUSEHOLDS
WITHIN A
3 MILE RADIUS
ON AVG. MAKE NEARLY

\$114K

NUMBER OF LOCAL
BUSINESSES WITHIN
A 1-MILE RADIUS

3,953



NEAL GOLUB

Vice President Lic.
01023733
+1 310 550 2667
neal.golub@cbre.com

CBRE

© 2025 CBRE, Inc. All rights reserved. This information has been obtained from sources believed reliable, but has not been verified for accuracy or completeness. You should conduct a careful, independent investigation of the property and verify all information. Any reliance on this information is solely at your own risk. CBRE and the CBRE logo are service marks of CBRE, Inc. All other marks displayed on this document are the property of their respective owners, and the use of such logos does not imply any affiliation with or endorsement of CBRE. Photos herein are the property of their respective owners. Use of these images without the express written consent of the owner is prohibited.