



Colliers



*Ready for Occupancy!*

For Lease

**Steve Foster**

+1 208 472 2834

steve.foster@colliers.com

**Michael McNeight**

+1 208 472 2865

michael.mcneight@colliers.com

755 West Front Street, Suite 300  
Boise, Idaho 83702  
+1 208 345 9000  
colliers.com/idaho

Building A

## Chloe Industrial Park - Bldg. A

1537 N. Debra Drive | Nampa, ID

### Highlights:

- Central Treasure Valley location
- Steel frame/metal siding construction
- Grade level loading
- Automatic door openers
- 18' to 20' clear height
- 240V 3 Phase (600 Amps)
- Vivint Security System included

**Building Size**

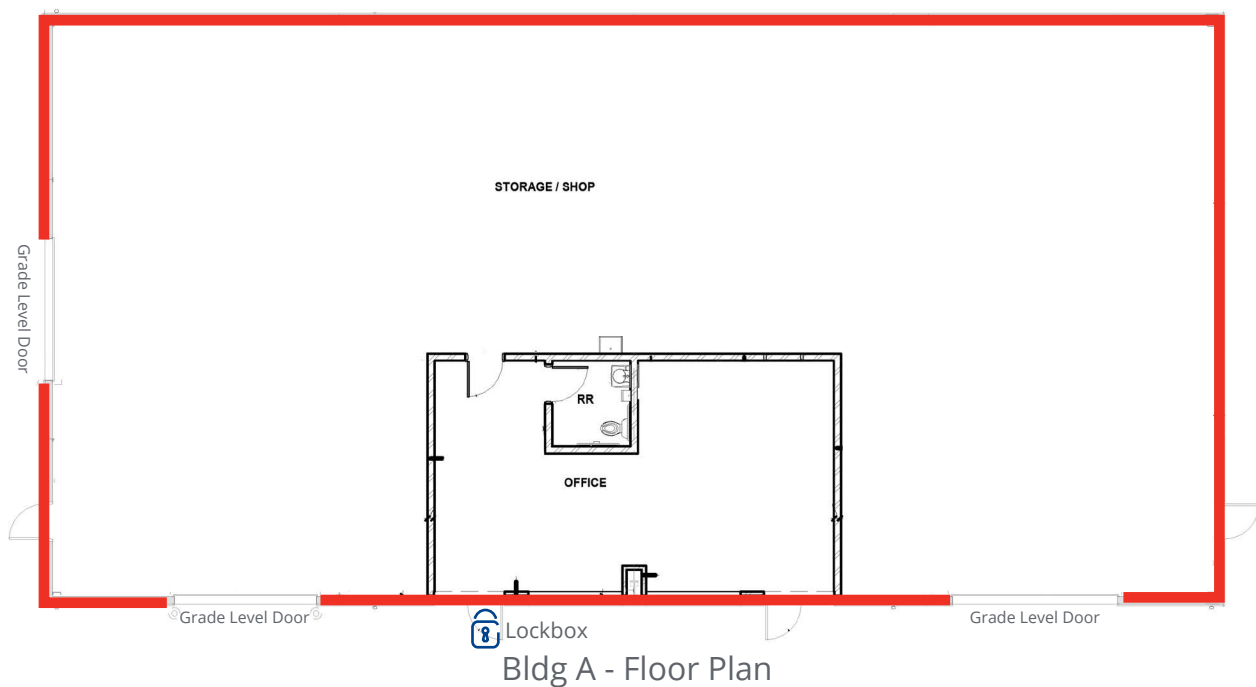
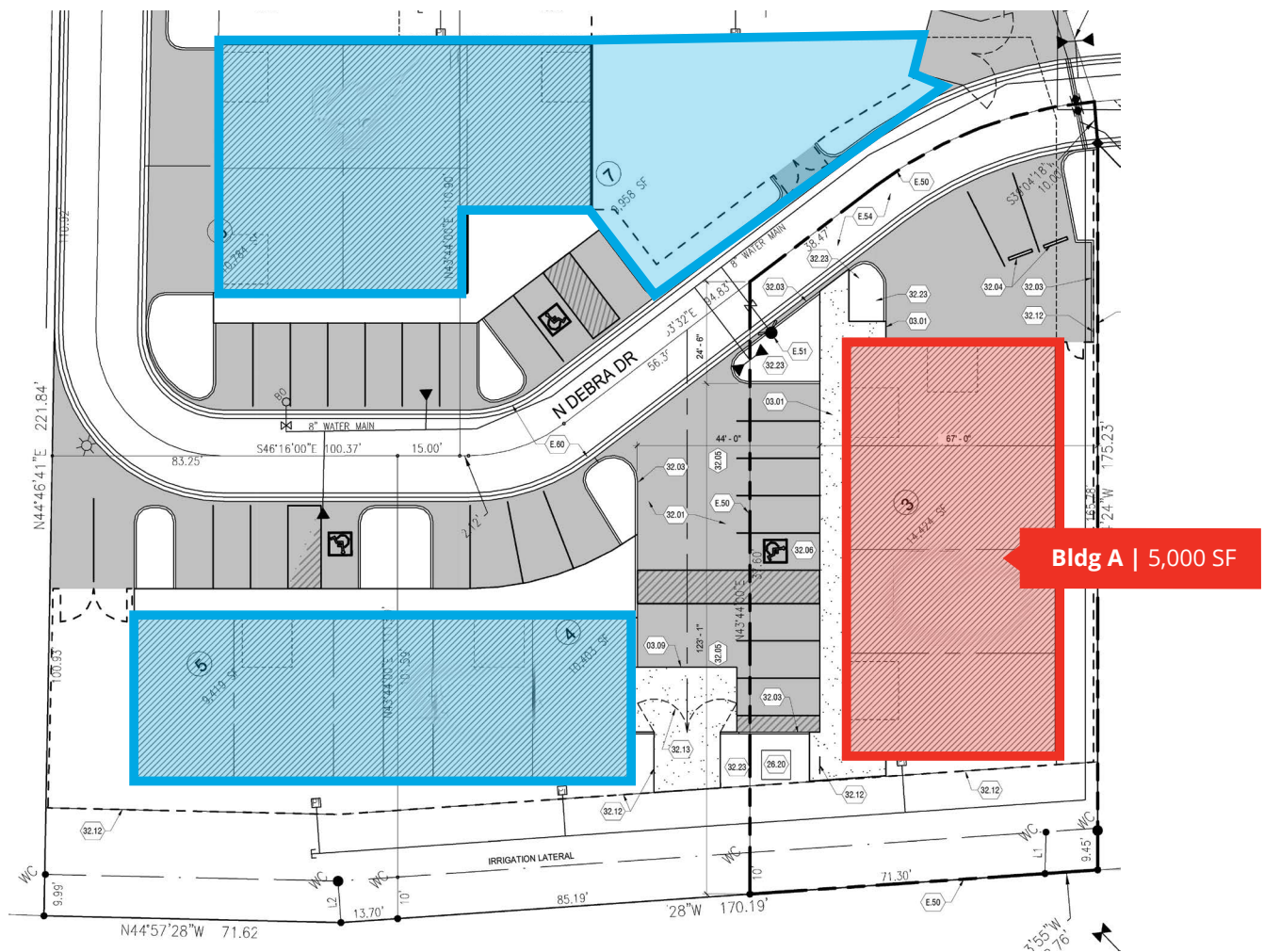
5,000 SF

**Lease Rate**

\$1.10 PSF NNN

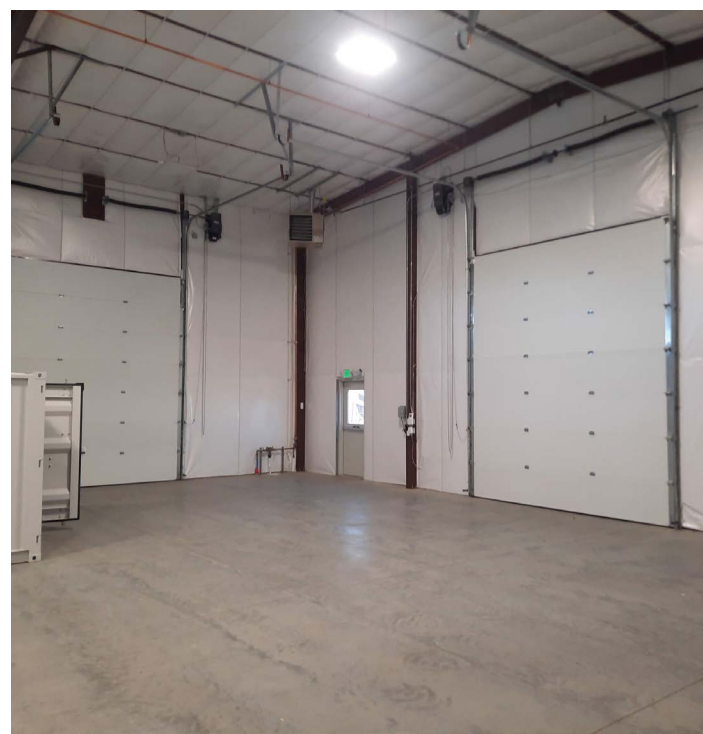
Accelerating success.

## Site Plan





# Property Gallery





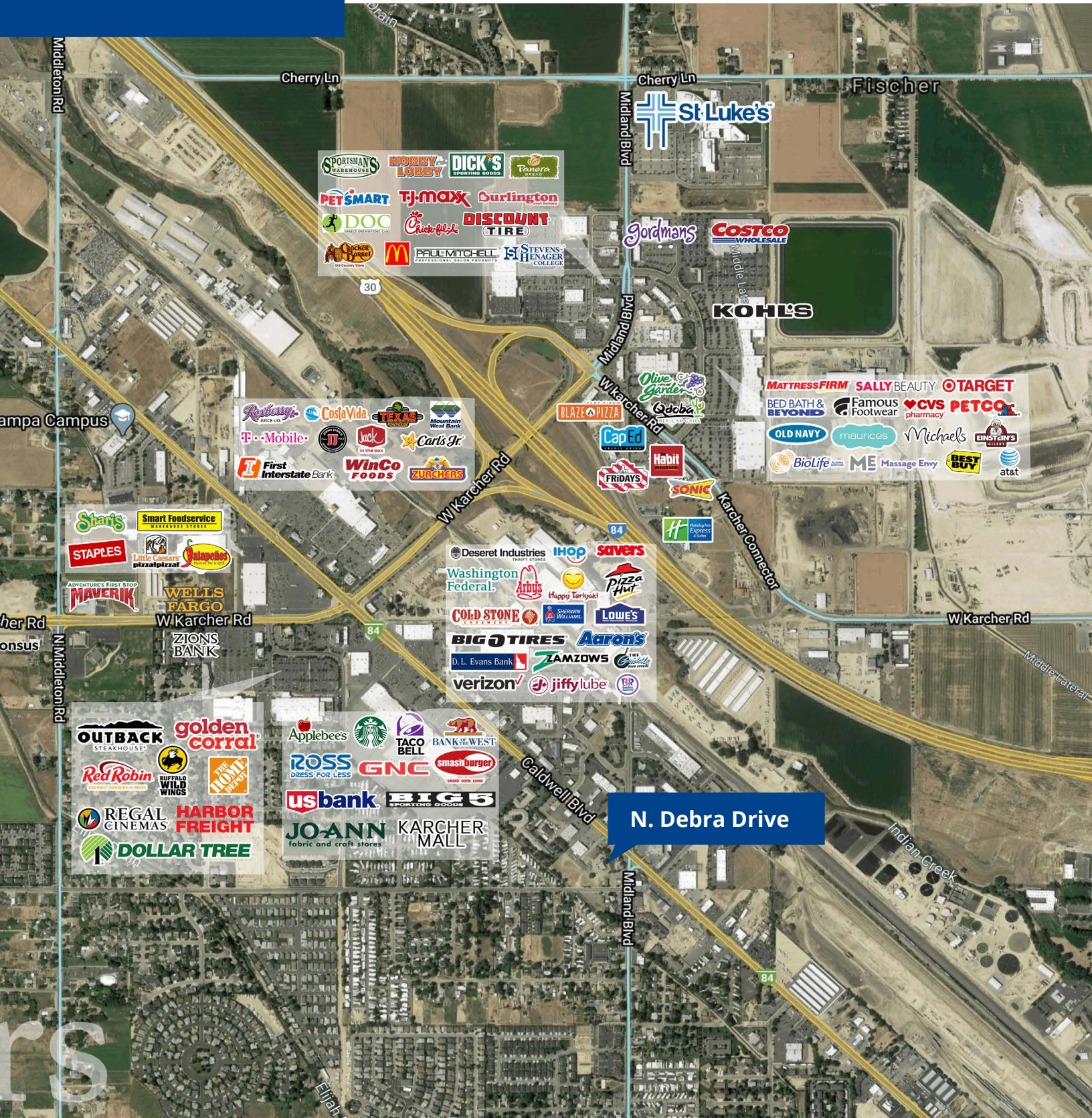
# Location



Google Map



Street View



N. Debra Drive



755 West Front Street, Suite 300  
Boise, Idaho 83702  
+1 208 345 9000  
colliers.com/idaho

This document has been prepared by Colliers for advertising and general information only. Colliers makes no guarantees, representations or warranties of any kind, expressed or implied, regarding the information including, but not limited to, warranties of content, accuracy and reliability. Any interested party should undertake their own inquiries as to the accuracy of the information. Colliers excludes unequivocally all inferred or implied terms, conditions and warranties arising out of this document and excludes all liability for loss and damages arising therefrom. This publication is the copyrighted property of Colliers and / or its licensor(s). © 2025. All rights reserved. This communication is not intended to cause or induce breach of an existing listing agreement. Colliers Paragon, LLC.