



For Sale
Brand new medical office building

Building : 3,144 SqFt
Lot size : 13,350 SqFt
Price listed : \$1,900,000.00

Property location : 3916 N Dartmouth,
Tampa, FL 33603

Contact : Aravind
(Aravinda Babu Kappaganthula)

Listing agent

License : SL3595456

Coldwell Banker Realty

Cell : 813-607-0530

Email : aravind@cbrealty.com

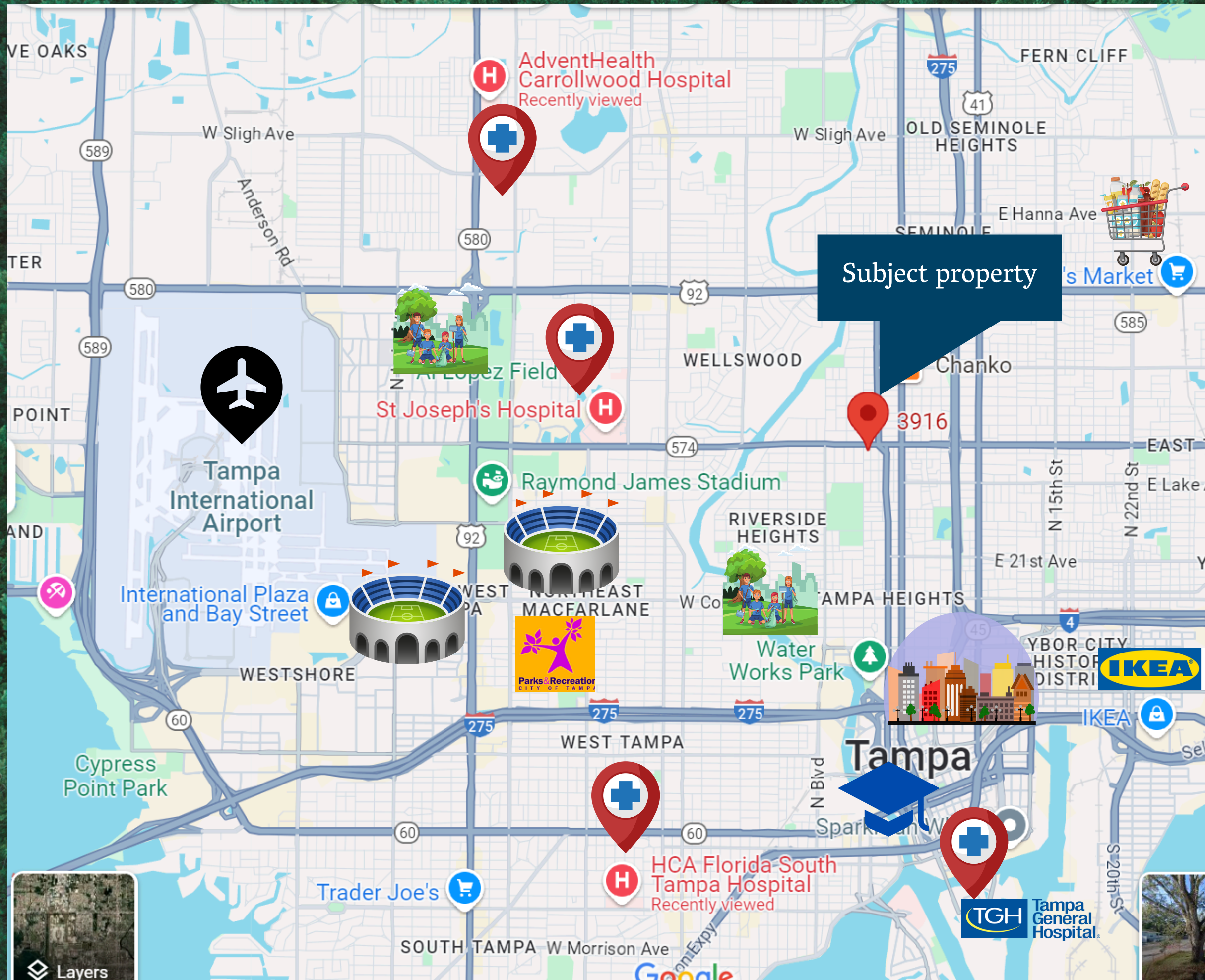
Website : aravindrealestate.com



About property



Beautiful, brand new medical office building for sale in an unbeatable location! This facility is fully built out and ready for your practice on day one. Featuring 6 well-appointed exam rooms—two of which are convertible for dental use—along with a spacious reception area, administrative office space, and 16 dedicated parking spaces. The property is ideal for primary care with managed care services with wellness center. Located just 8-10 minutes from St. Joseph's Hospital with easy access to I-275, this is a rare opportunity to establish or expand your practice in a prime medical corridor. Contact the Listing Agent today for more details or to schedule a private tour!



Hospitals and Medical Centers

- St. Joseph's Hospital 2.3 miles
- Tampa General Hospital 5.7 miles
- Memorial Hospital of Tampa 5 miles
- Advent Health (Fletcher Ave) 8.9 miles
- Advent Health Carrollwood Hospital 5.2 miles

Public Transportation

- Bus stop next to property

Proximity to major highways I-275

- ### Proximity to Pharmacies :
- CVS, Walgreens, Carepluse, Cano, Advance pharmacy, Choice, Vistara, Sky City, Health Matters

Parks and Recreation Dept 3.3 miles

- Tampa Riverwalk 2.7 miles
- Al Lopez park 3.3 miles
- Raymond James Stadium 4 miles
- George M. Steinbrenner Stadium 2.8 miles

Schools and Universities

- University of South Florida (USF) 7.6 miles
- University of Tampa (UT) 2.5 miles

Airport

- Tampa International Airport 7.2

Shopping Centers and Retail

- Westshore Plaza 5.9 miles
- International Plaza and Bay Street 6.2 miles

Subject property

3916

AdventHealth
Carrollwood Hospital
Recently viewed

St Joseph's Hospital

Raymond James Stadium

RIVERSIDE
HEIGHTS

Water
Works Park

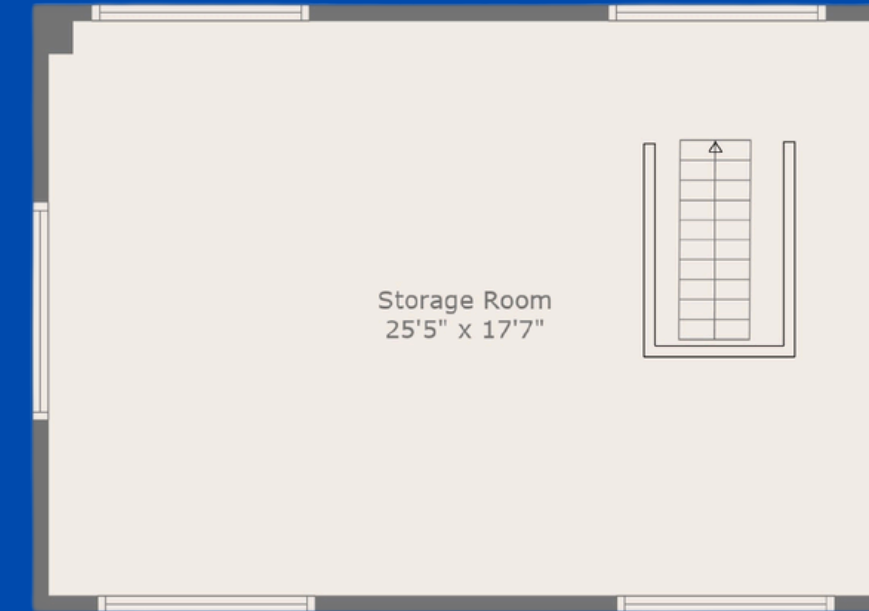
HCA Florida South
Tampa Hospital
Recently viewed

TGH Tampa
General
Hospital

Layers

Google

Floor plan



Floor Plan summary

- Poarch : 59'9" x 9'6"
- Lobby/Reception : 18'9 x 20'5"
- Hallway : 4'10" x 33'8"
- Exam Room's (6) : 10'9" x 9'11", 10'9" x 9'11", 10'9" x 10'4", 9'2" x 9'2", 11'2" x 9'2, 10'0" x 9'2"
- Utility Room : 6'1" x 4'6", A Room : 6'6" x 9'2"
- Admin Room : 10'3" x 9.2"
- Hallway : 37'4" x 4'10"
- Break Room : 10'1" x 14'5"
- Wellness Room Kitchen Area : 23'5" x 13'1"
- Bathrooms (3) : 8'3" x 6'5", 8'0 x 6,9", 8'0 x 7'4"
- Attic/Loft Storage room : 25'5 x 17'7" (convertible at choice)



Prime Location:

- Situated just 8-10 minutes from St. Joseph's Hospital.
- Seamless access to I-275, this new medical office building is in a premier medical corridor,
- Convenient for patients and proximity to major medical centers.



Rear view of the building

Showcase the rare side view of the building from MLK Street, offering great visibility to high-traffic commuters. Drivers stopped at the light get a clear view, ensuring your practice leaves a lasting impression. With bus stops along the same road, the location offers excellent accessibility for both patients and staff.

Lobby/Reception 18'9" x 20'5"

The spacious, virtually staged lobby offers a warm welcome to visitors. The layout provides ample space for a comfortable waiting area, creating a lasting positive impression for patients, visitors, and business professionals





Lobby/Reception
18'9" x 20'5"

A sleek reception desk runs along the length of the hall, where staff greet guests with professionalism.

Examining room (6)

- 1) 10'9" x 9'11"
- 2) 10'9" x 9'11"
- 3) 10'9" x 10'4"
- 4) 9'2" x 9'2"
- 5) 11'2" x 9'2"
- 6) 10'0" x 9'2"

The facility includes 6 examination rooms, with 2 convertible for dental use. Each room is thoughtfully designed to provide a calm and professional atmosphere, ensuring a comfortable experience for patients





Hallway

The 4'10"-wide hallway offers a professional, spacious corridor, providing a peaceful walking experience for patients. Its generous width ensures smooth equipment transfers without any hassle or narrow passages.

Lab room 10'4" x 10'0"

The spacious lab room is thoughtfully designed to accommodate staff, patients, and equipment efficiently. With well-organized cupboards, the space ensures smooth workflow and supports optimal practice management.





Store room "ATTIC"
25'5" x 17'7"

This spacious attic offers endless possibilities, serving as a versatile storage room or convertible to a beautifully designed office. Abundant natural light creates a welcoming atmosphere, making it a perfect spot for productivity or organization.

Break room
10'1" x 14'5"

The break room offers a perfect space for relaxation and social interaction, allowing staff to unwind, connect, and recharge. It also supports meal preparation, recognition of achievements, and features entertainment options and a quiet corner for reading or napping.





Wellness center Kitchen 23'5" x 13'1"

The wellness center kitchen is a modern space equipped for nutrition education and meal prep. With ample counter space, supporting the center's holistic wellness mission.

Wellness center 23'5" x 22'2"

Patients enjoy the convenience of multiple services in one location, including personal trainers and mental health professionals, promotes healthier living by reducing chronic disease risks and enhancing overall well-being.





ARAVINDA KAPPAGANTHULA

Real Estate Advisor

Call/Text: (813) 607-0530

License# SL3595456

aravind@cbrealty.com

aravindrealestate.com

19026 Bruce B Downs Blvd

Tampa, FL 33647



Owned by a subsidiary of Anywhere Advisors LLC. 