

For Sale / Lease

Retail Condominium

LA Face Mart

1458 S. San Pedro St #244

Los Angeles, CA 90015

Hoon Jae (Jay) Kim

Broker | Lic # 01834319

310.800.5662

✉ dahamrealty@gmail.com

DAHAM REALTY GROUP INC

Lic# 01987989

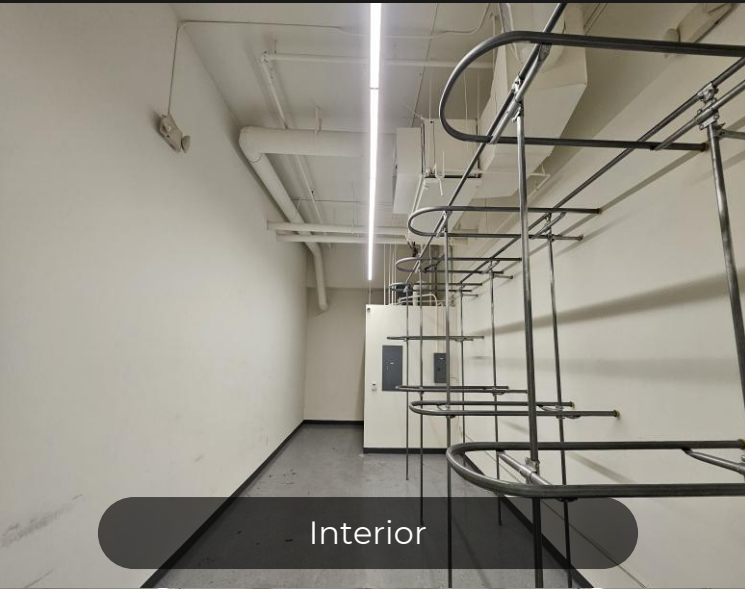
2164 Clifford St
Los Angeles, CA 90026

Detailed Specifications

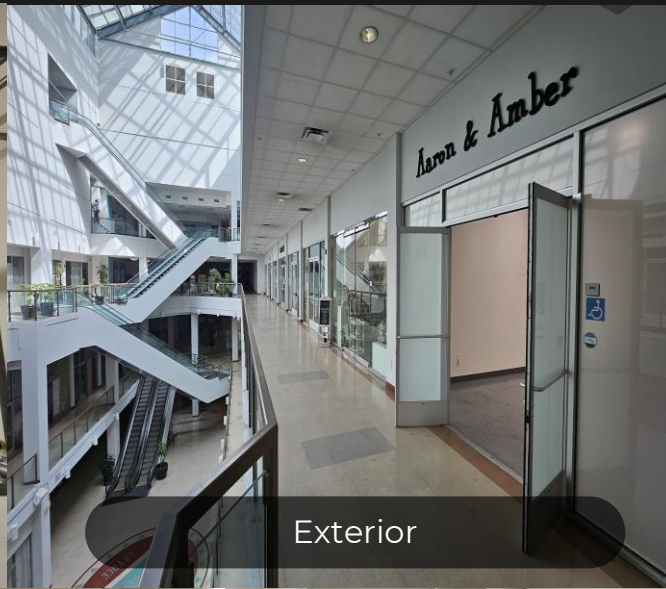
Property Details

1458 S. San Pedro St #244

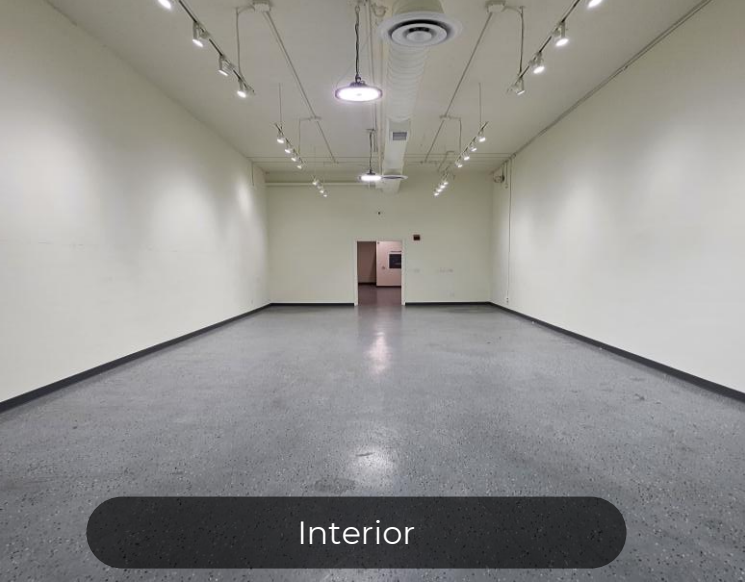
Los Angeles, CA 90015



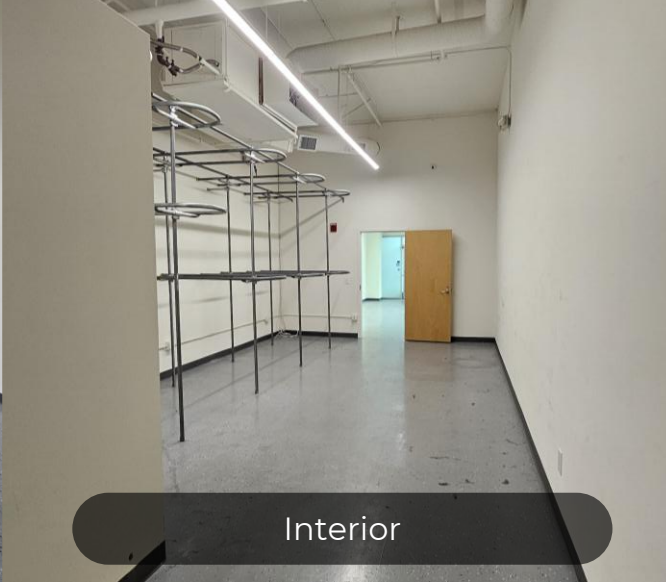
Interior



Exterior



Interior



Interior

LA Face Mart Complex

A modern commercial hub established in 2009. The total building area spans approximately **300,000 SQFT**.

Unit Size



1,104 SQFT

Property Type



Commercial Condo

Location Info



2nd Floor Unit #244

2 Parking



Two parking spaces

APN / Zoning



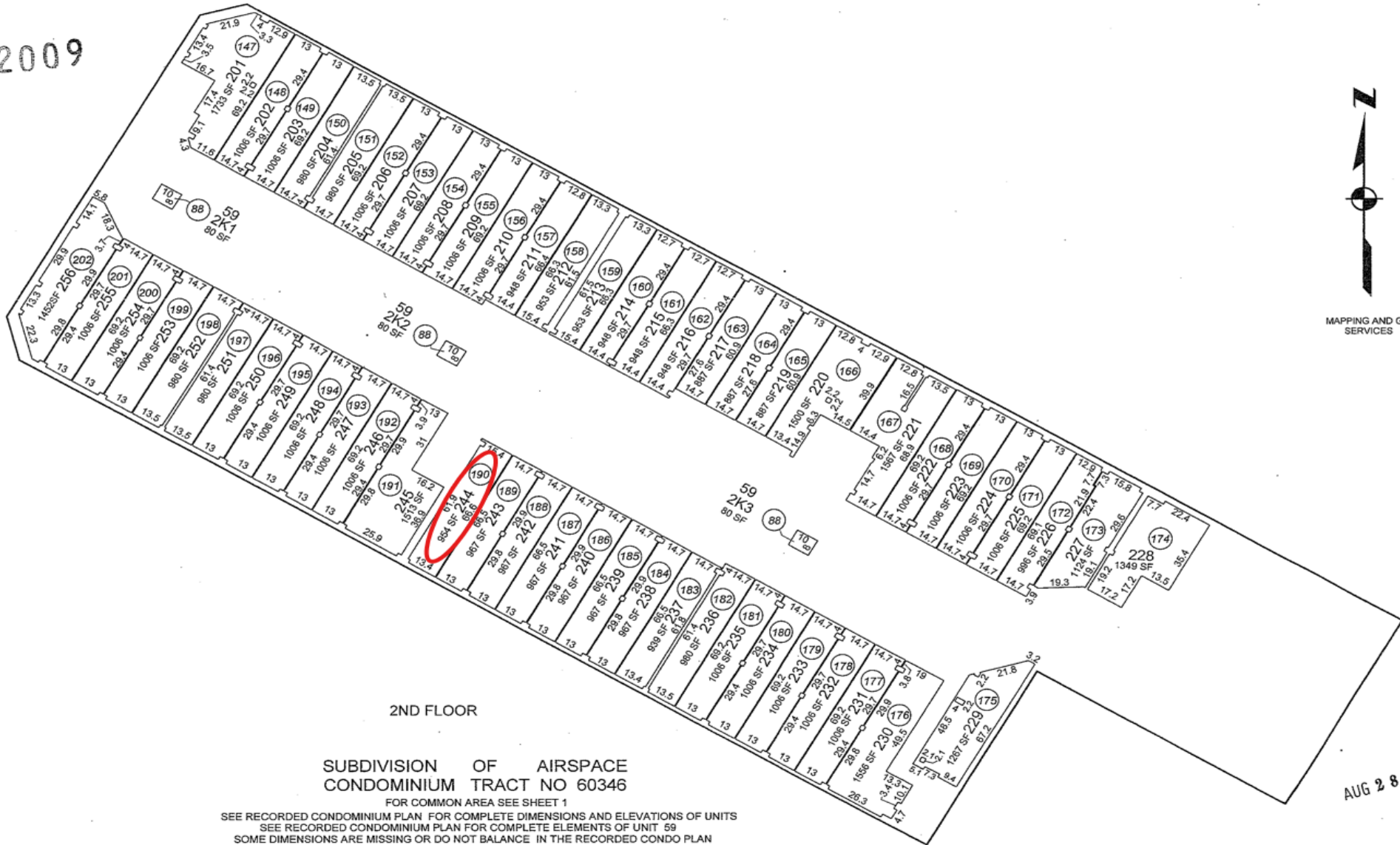
5132-027-190 (LA M2)

Year Built



2009

2009



MAPPING AND GIS
SERVICES

2ND FLOOR

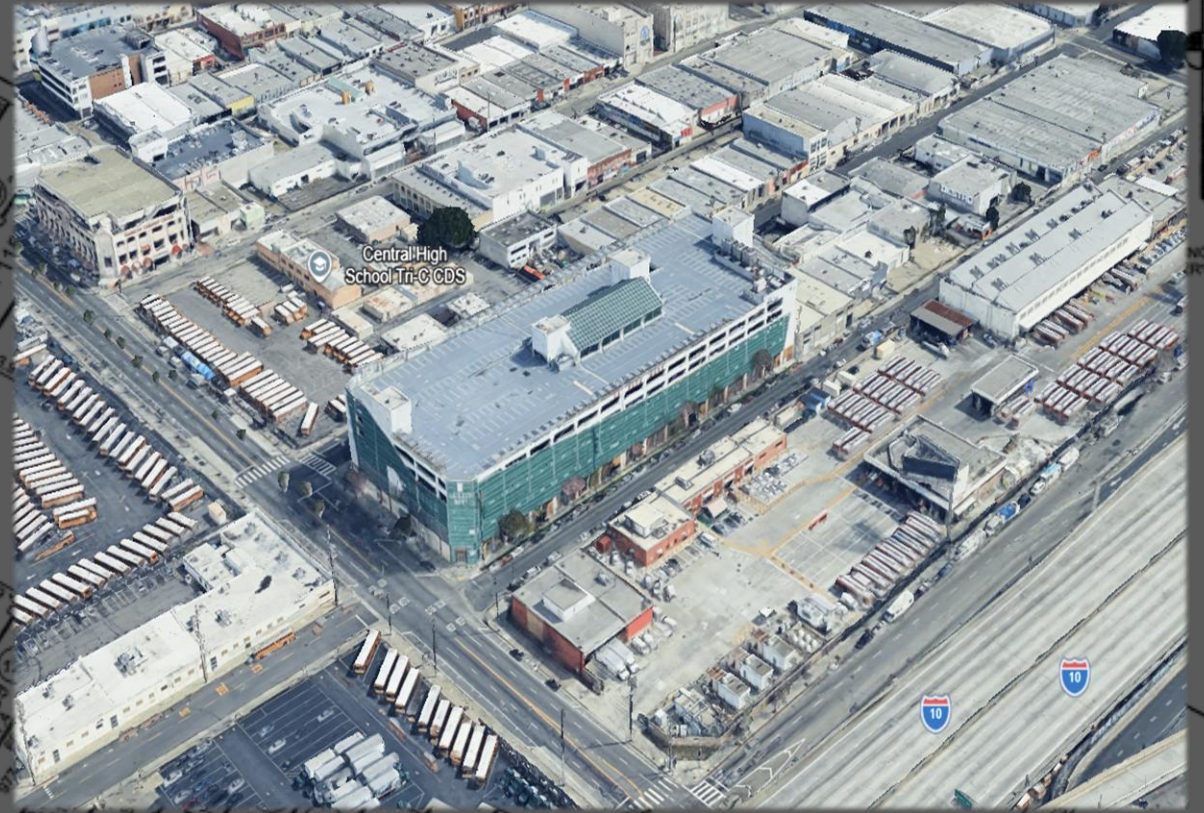
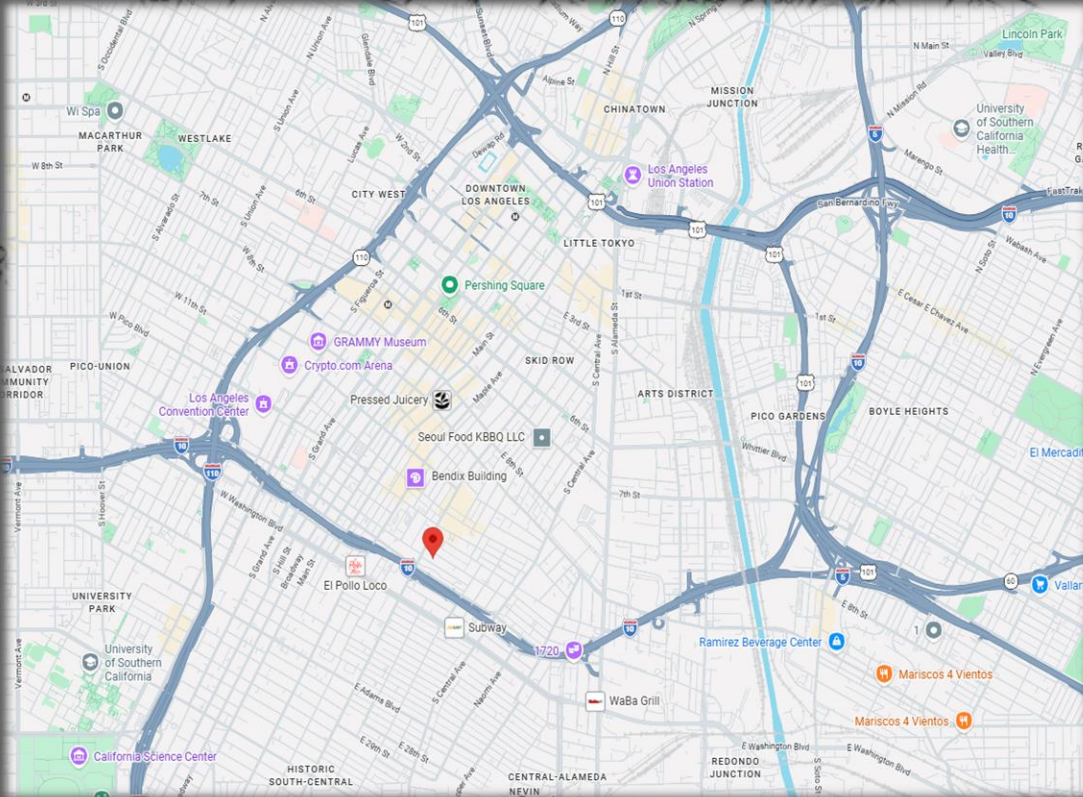
SUBDIVISION OF AIRSPACE
CONDOMINIUM TRACT NO 60346

FOR COMMON AREA SEE SHEET 1

SEE RECORDED CONDOMINIUM PLAN FOR COMPLETE DIMENSIONS AND ELEVATIONS OF UNITS
SEE RECORDED CONDOMINIUM PLAN FOR COMPLETE ELEMENTS OF UNIT 59
SOME DIMENSIONS ARE MISSING OR DO NOT BALANCE IN THE RECORDED CONDO PLAN

AUG 28 2008

2009



ING AND GIS SERVICES

1ST FLOOR

**SUBDIVISION OF AIRSPACE
CONDOMINIUM TRACT NO 60346**

FOR COMMON AREA SEE SHEET 1

SEE RECORDED CONDOMINIUM PLAN FOR COMPLETE DIMENSIONS AND ELEVATIONS OF UNITS

SEE RECORDED CONDOMINIUM PLAN FOR COMPLETE ELEMENTS OF UNIT 59

SOME DIMENSIONS ARE MISSING OR DO NOT BALANCE IN THE RECORDED CONDO PLAN

AUG 28 2008

For Sale / Lease

2 Parking, 2nd Fl

1,104 SQFT

1458 S. San Pedro St #244


Los Angeles, CA 90015



Hoon Jae (Jay) Kim

Broker | Lic # 01834319

 310.800.5662

 dahamrealty@gmail.com

Confidentiality and Intended Use

These materials are proprietary to Daham Realty Group Inc., and provided exclusively for your evaluation of the subject property as a prospective tenant. Any alternative use or distribution of this content requires our advance written authorization.

Scope and Limitations

Daham Realty Group Inc., has compiled this presentation to offer a strategic overview of the leasing opportunity. The content represents a curated summary and should not be construed as comprehensive of all factors relevant to your decision. Information provided is current as of publication and remains subject to updates. Our summaries serve as reference points rather than definitive interpretations of underlying lease documents, and they do not substitute for independent legal counsel.

Verification and Responsibility

The data within this presentation has been drawn from sources Daham Realty Group Inc., considers credible. Nevertheless, we cannot warrant the precision or completeness of any information presented. Property specifications, including measurements and age details, should be treated as estimates. You are responsible for conducting your own due diligence to confirm all material facts, and you accept full responsibility for decisions based on this information.

DAHAM REALTY GROUP INC

Lic# 01987989

2164 Clifford St
Los Angeles, CA 90026