



Industrial Space for Lease

7602 Murray Drive Stockton, CA



3,332 SF Available
Approx. 600 SF Office

Asking Rent: \$0.70/NNN

We are pleased to offer the following space:

- ⇒ Five Miles to Hwy 99, Five Miles to I-5
- ⇒ Located off Hammer Lane
- ⇒ Two (2) Grade Level Doors
- ⇒ 22' Clear Height
- ⇒ Gated Back Access to Property
- ⇒ Ample Parking



Rebecca Koons 916.374.4221 rkoons@macco.org Lic #01924691
Louis MacLaughlin 916.374.4235 louiemac@macco.org Lic #02121706

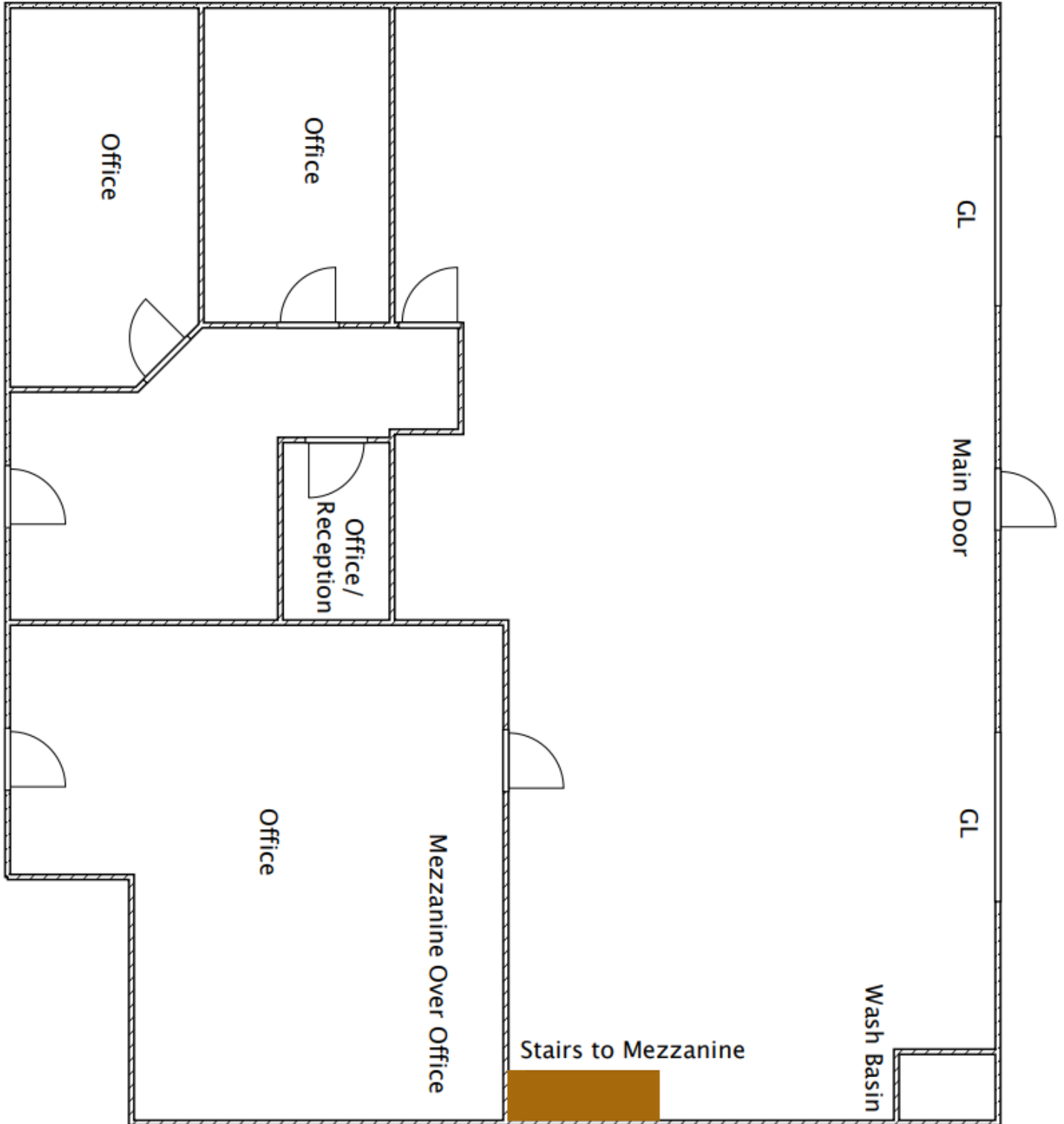
1401 Shore Street, West Sacramento, CA 95691 T 916.371.9021

www.macco.org

7602 Murray Drive Stockton, CA

7602 Murray Drive

Total SF	Doors: GL/Dock	Comments
Unit 106	1/0	Multiple offices. One grade level door. .
Unit 108	1/0	Mezzanine over office in warehouse.. One grade level door.



7602 Murray Drive Stockton, CA

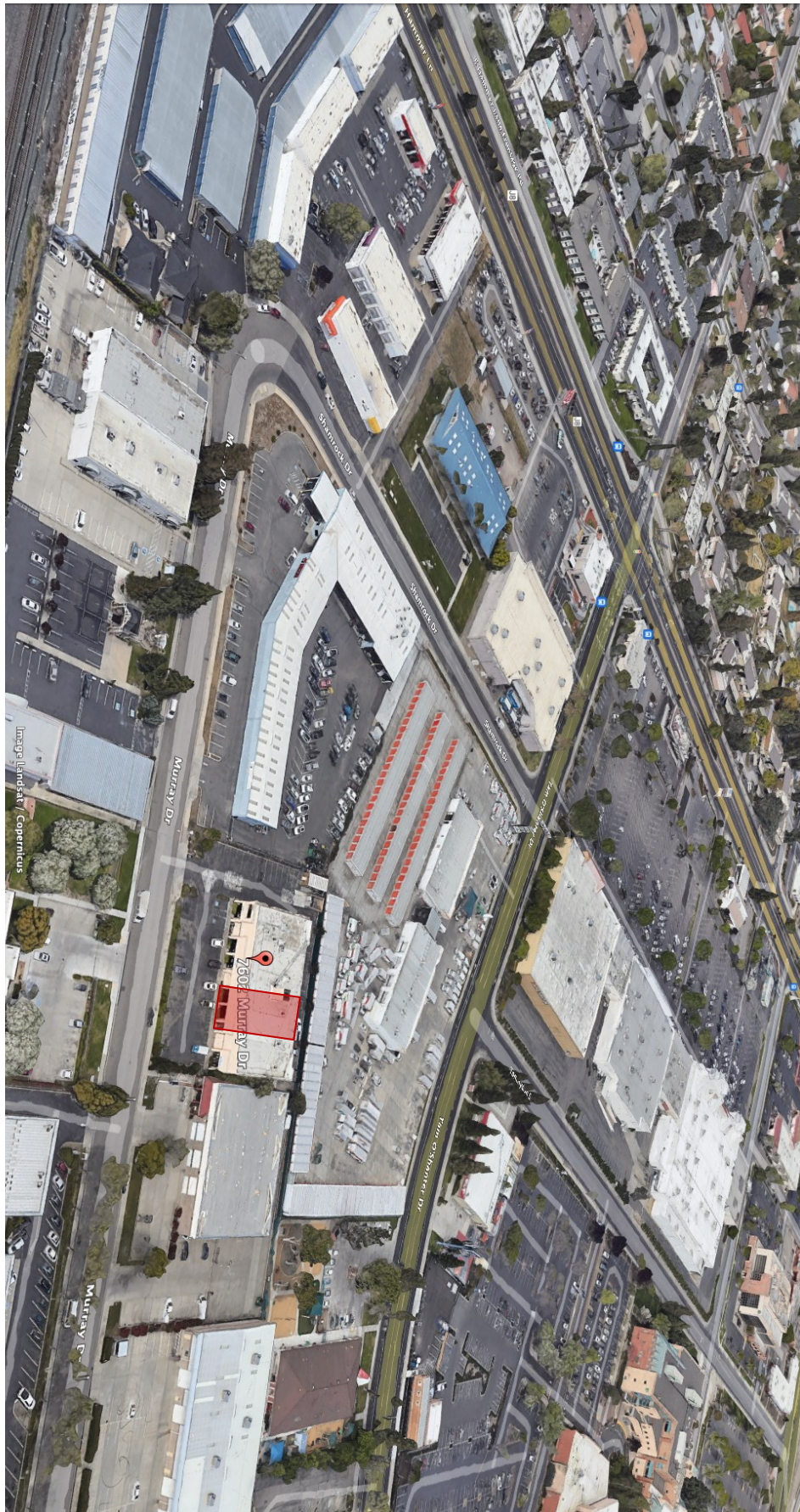


Image Landsat / Copernicus

