

# 1676 NORTH CALIFORNIA BLVD

## Plug & Play Sublease



### Suite 200

6,455 RSF Available Through June 30, 2031

**Robert Vance**

925 944 2140

[robert.vance@jll.com](mailto:robert.vance@jll.com)

RE License: #00971934

**Tom Whitelock**

415 917 6525

[tom.whitelock@jll.com](mailto:tom.whitelock@jll.com)

RE License: #01959206



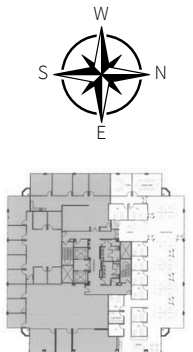
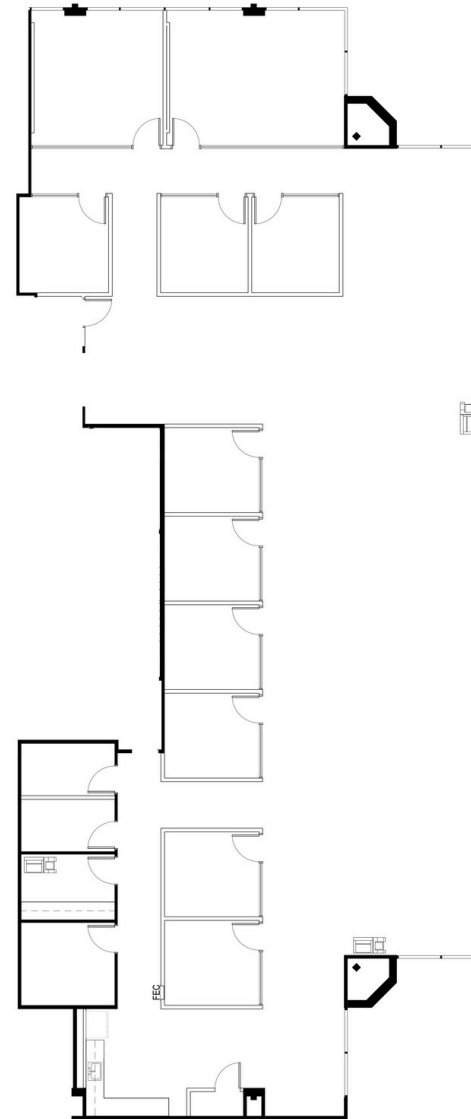
Jones Lang LaSalle Brokerage, Inc.,  
CA Real Estate License #0185626

# 1676 NORTH CALIFORNIA BLVD

## SUITE 200 | 6455 RSF

### SPACE DETAILS :

- Brand new space
- Double glass door entry
- Card key security system
- 8 private offices
- 2 phone rooms
- 1 large conference room (seats 12)
- 1 small conference room (seats 6-8)
- Climate controlled IT room
- 16 sit stand desks and chairs in the open office with drop in lockers
- Open Collaboration area



# 1676 NORTH CALIFORNIA BLVD

## GROWERS SQUARE

### PROPERTY DETAILS :

- New onsite conference room
- Easy access to I-680 and Hwy 24
- Tenant gym and showers
- 12 minute walk to Walnut Creek BART
- Close proximity to Downtown Walnut Creek
- Newly renovated common areas and landscaping



# 1676 NORTH CALIFORNIA BLVD

## GROWERS SQUARE



# 1676 NORTH CALIFORNIA BLVD

## GROWERS SQUARE



# 1676 NORTH CALIFORNIA BLVD

## GROWERS SQUARE

