

TURNKEY REGENERATIVE Ag &
CARBON SEQUESTRATION PROPERTY

FOR SALE

12006 Wasatch Road, Longmont, CO 80504

PROPERTY HIGHLIGHTS

This **32-acre** property has implemented **regenerative agricultural practices** for well over 10 years, improving soil health and **advancing carbon sequestration**. Operations have included livestock production and **demonstration test-crop sites**. The farm has played a critical role in supporting local food banks across the Front Range—including **Weld, Broomfield, and Boulder** counties—as a local food-producing enterprise. The model emphasizes food rescue, organic-waste diversion, composting, and **carbon sequestration**, reducing the need for synthetic inputs and creating a platform for specialty cultivation, including **horticulture, vermiculture (worm farming), and mushroom cultivation**.

The property is a candidate site for **biochar manufacturing** pursuant to **Article 4-505.B** of the Boulder County Land Use Code. There is potential for **residential development** and **accessory structures** supporting agricultural operations and personal use pursuant to **BLUC Article 4-516**; under **Resolution 2023-073**, a **2,500-SF above-grade residence** and approximately **22,000 SF** of accessory structures may be permitted with county approval. Infrastructure includes **one domestic water tap** with five hydrants distributed across the property and a **25-kilowatt transformer** providing electric service. The property offers strong financial potential for an agricultural operator—and even greater upside for a **biochar production facility**. **Organic certification** may be possible, and the property is **free of chemical fertilizers**. Boulder County has recognized this unique property for its **regenerative agricultural practices**.

Sale Price

Withheld

Site Size

31.51 Acres

Zoning

Ag

Availability

Immediately



10 Mile Population



168,308

10 Mile Employees



59,636

Colorado
Group

FOR MORE INFORMATION

Aaron Baney

Senior Commercial Broker
303.449.2131 ext 166
aaron@coloradogroup.com

Jessica Cashmore

Principal/Senior Commercial Broker
303.449.2131 ext 146
jessica@coloradogroup.com

© 2025 The Colorado Group, Inc. The information contained herein was obtained from sources deemed reliable and while thought to be correct, accuracy it is not guaranteed by The Colorado Group, Inc. Licensed in the State of Colorado.

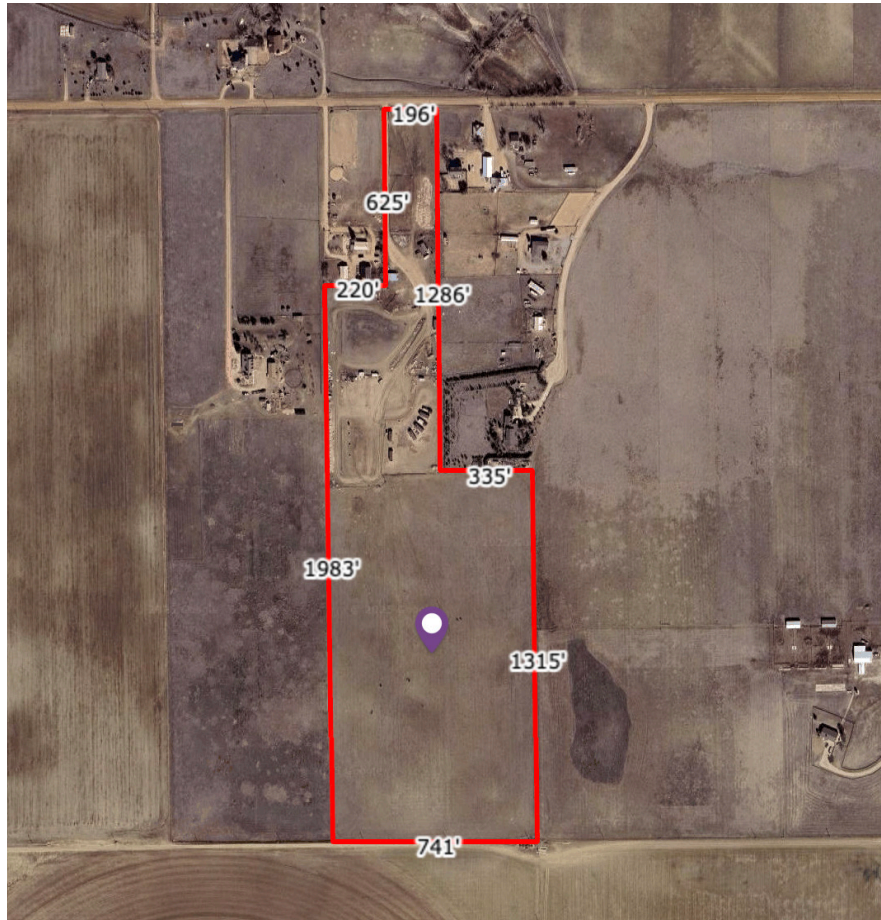
The Colorado Group, Inc. | 3101 Iris Avenue, Suite 240, Boulder, CO 80301 | 303-449-2131 | www.coloradogroup.com

TURNKEY REGENERATIVE Ag & SEQUESTRATION PROPERTY

12006 Wasatch Road, Longmont, CO 80504

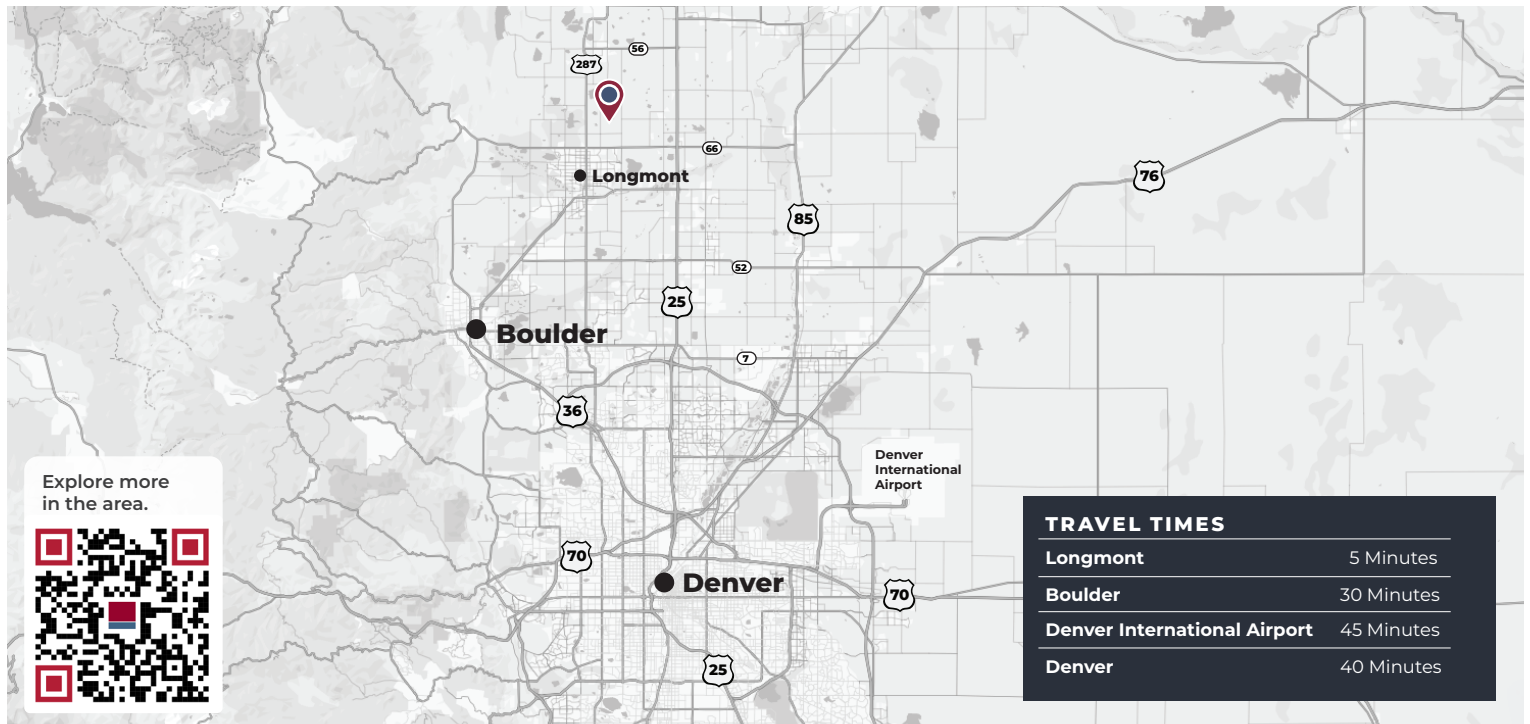
Colorado
Group

PROPERTY FLOOR PLAN



PROPERTY LOCATION

 12006 WASATCH RD.
LONGMONT, CO 80504



For a complete disclaimer, please see page one of this brochure.

Google Maps

The Colorado Group, Inc. | 3101 Iris Avenue, Suite 240, Boulder, CO 80301 | 303-449-2131 | www.coloradogroup.com