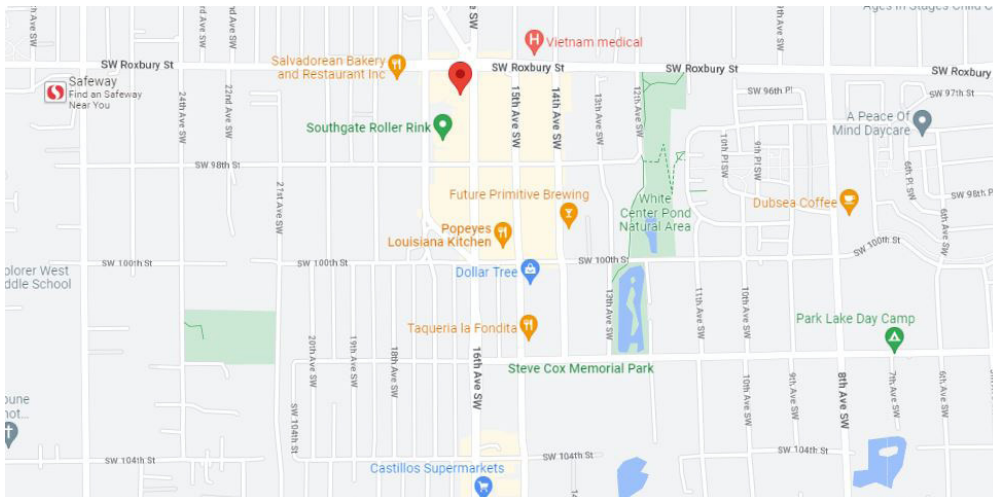
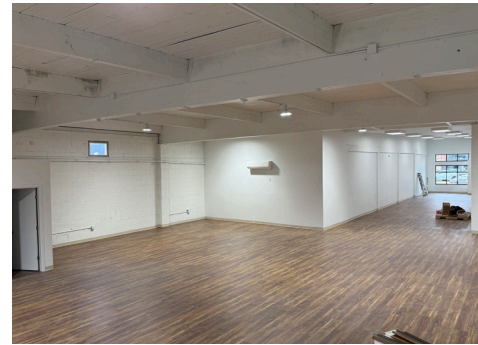
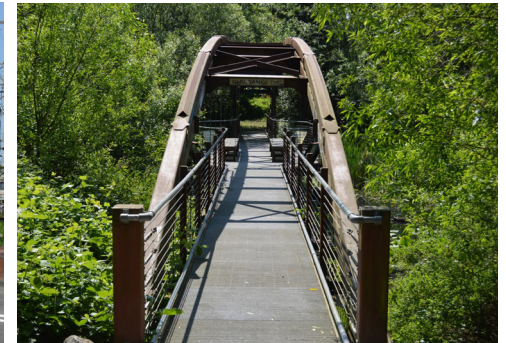


FOR LEASE

WHITE CENTER RETAIL SPACE
9609-9619 16TH AVE SW | SEATTLE, 98106



PROPERTY FEATURES

- Located in White Center on 16th ave right off of Delridge Way
- Multiple demising options
- Newly renovated, available now
- \$26/SF/YR + \$6 NNN for retail
- \$14/SF/YR, gross, for basement storage spaces.
- Located in unincorporated King County - great place to do business!



ANDY
RANDLES

206.405.0090
andy@ewingandclark.com

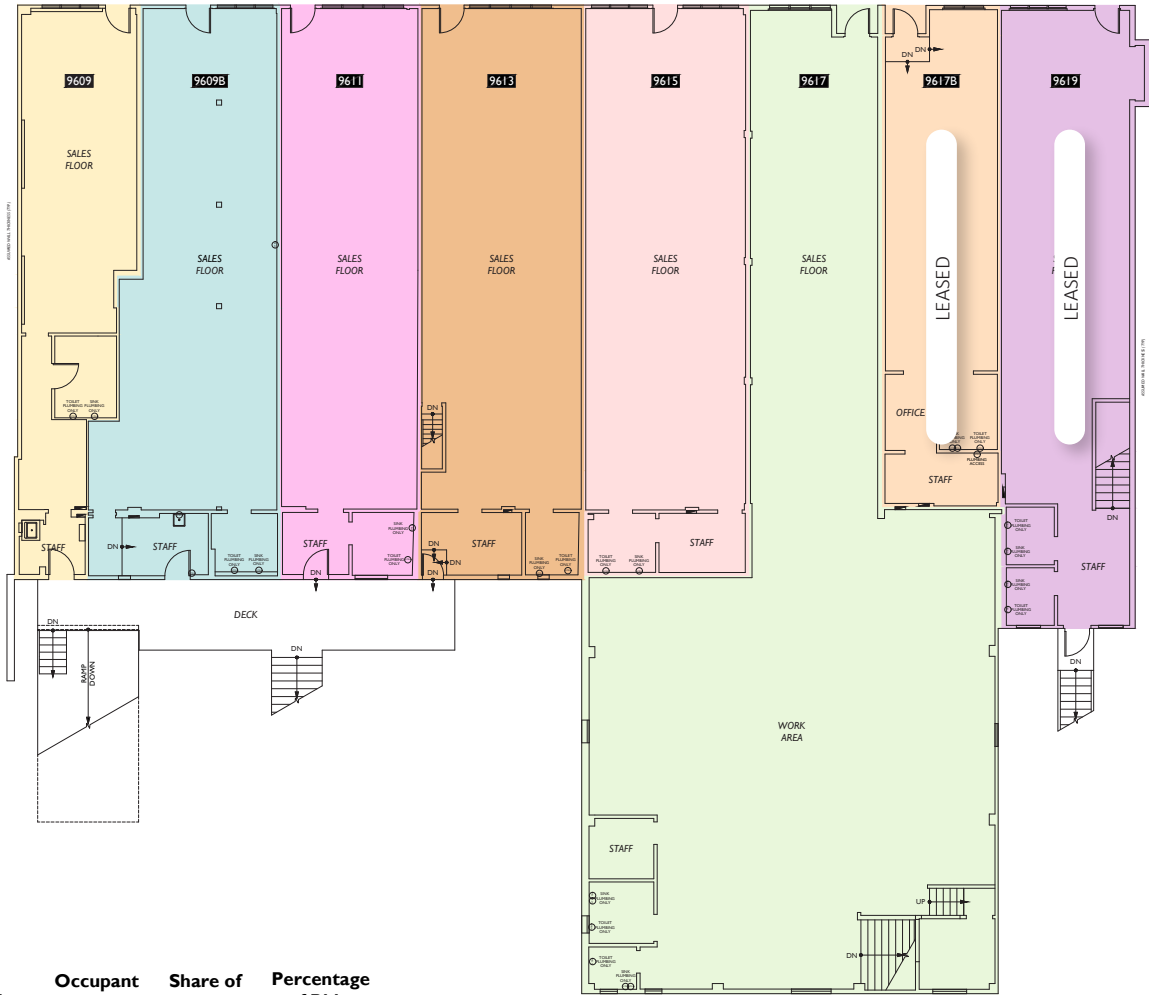
TOM
GRAFF

206.295.1445
tomgraff@ewingandclark.com

FLOOR PLAN

9609-9619 16TH AVE SW | SEATTLE, 98106

Southwest Roxbury Street
Adjacent Retail Buildings

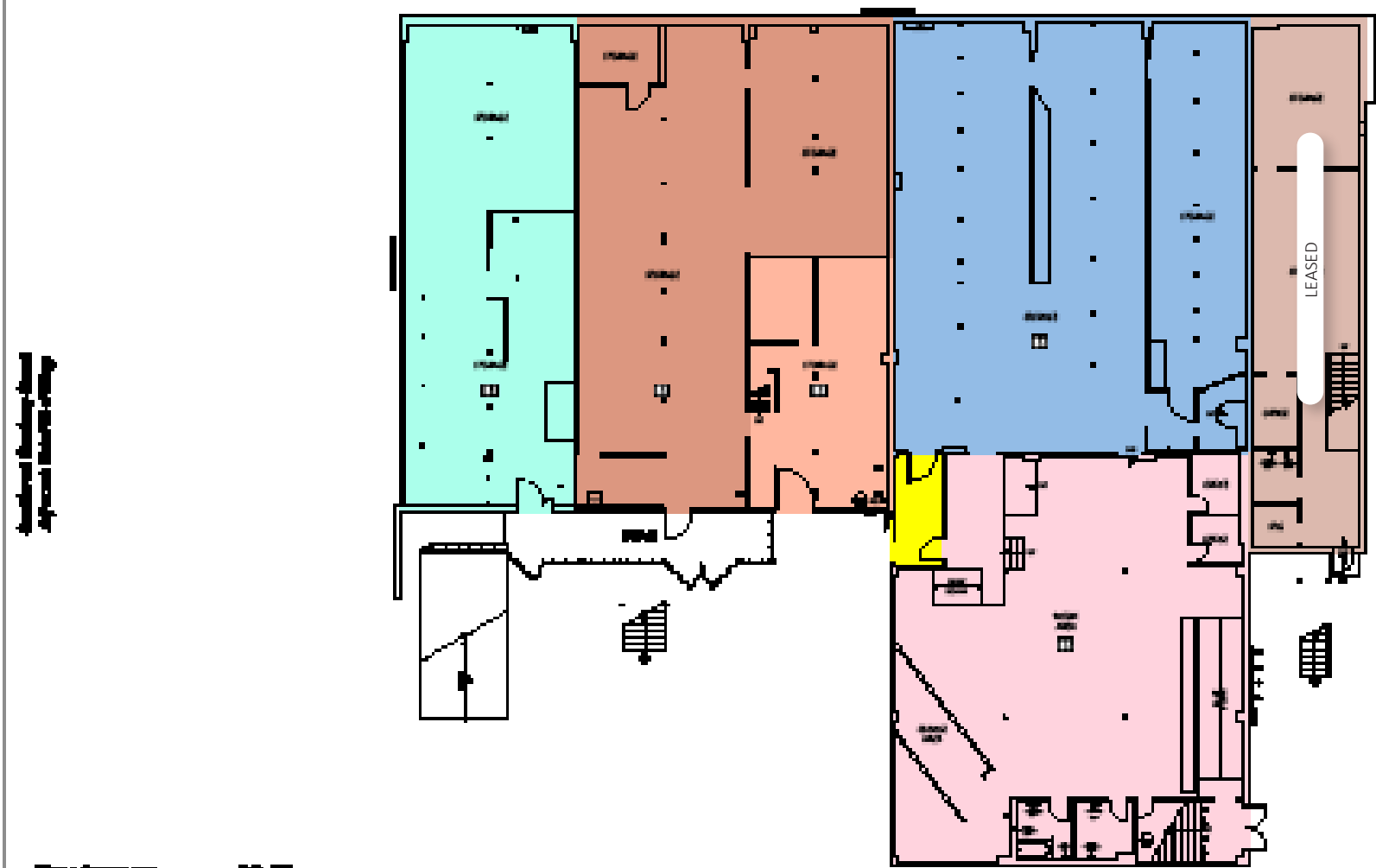


Floor Summary	SQ. FT.	Suite #	Occupant GLA	Share of S&P	Percentage of Bldg.
Total Gross Leasable Area	11,551.99	Suite 9609	827.88	--	3.58%
Total GLA Exclusions	0	Suite 9609B	1,288.79	--	5.58%
Percentage of Building	49.98%	Suite 9611	1,131.97	--	4.90%
		Suite 9613	1,323.31	--	5.72%
		Suite 9615	1,317.11	--	5.70%
		Suite 9617	3,631.61	--	15.71%
Structured Parking	0	Suite 9617B	832.34	LEASED	
Service & Public Areas	0	Suite 9619	1,199.00	LEASED	
Total Vertical	0				

Alleyway
Neighboring Retail Buildings
17th Avenue Southwest

BASEMENT FLOOR PLAN

9609-9619 16TH AVE SW | SEATTLE, 98106



Floor Summary
Total Gross Inside Area
Total GFA
Average of 100%

SQ. FT.
11,477
11,477

Structural Parking: 0
Service & Public Areas: 115.30
Total Vertical: 0

Room	Gross Area	Net Area	Percentage of Net
01 Storage	1,451.61	1,451.61	7.15%
02 Storage	3,267.48	3,267.48	9.81%
03 Storage	4,872.50	4,872.50	3.97%
04 Storage	3,971.30	3,971.30	13.12%
05 Storage	3,493.28	3,493.28	11.88%
06 Storage	1,177.79	1,177.79	1.00%

*Values include a proportional share of Service & Public Areas (GFA) of 115.30 sq. ft.

Legend
Light Blue: Structural Parking
Yellow: Service & Public Areas
Pink: Total Vertical

PHOTOS

9609-9619 16TH AVE SW | SEATTLE, 98106



**ANDY
RANGLES** | 206.405.0090
andy@ewingandclark.com

**TOM
GRAFF** | 206.295.1445
tomgraff@ewingandclark.com

PHOTOS

9609-9619 16TH AVE SW | SEATTLE, 98106



**ANDY
RANGLES**

206.405.0090
andy@ewingandclark.com

**TOM
GRAFF**

206.295.1445
tomgraff@ewingandclark.com

AERIAL MAP

9609-9619 16TH AVE SW | SEATTLE, 98106

