



# RIVERS BEND RETAIL CENTERS

13101 RIVERS BEND BLVD & 241 EAST HUNDRED RD  
CHESTER, VA 23836

## NOW LEASING!



RETAIL, MEDICAL & OFFICE SPACE IN GROWING AREA OF CHESTERFIELD COUNTY

### FEATURES

- ▶ Direct access from busy Route 10 / W. Hundred Road
- ▶ Close to Meadowville Technology Park, **home of newly announced LEGO**, Amazon, Capital One, Medline Industries, Niagara Bottling, CINTAS, Northrop Grumman, ZEISS Optical
- ▶ Existing medical and general retail/office upfits available
- ▶ Average household income of \$100,000+
- ▶ Fifteen minutes from Fort Gregg-Adams Army Base
- ▶ High quality construction and landscaping design
- ▶ Excellent access to main interstates in area (I-95 < 4 miles, I-295 < 1 mile)
- ▶ Over 50,000 vehicles per day, expected to increase

### SUMMARY & NEARBY

Available Space	Office <b>PENDING LEASE</b> 1,920 SF
	Retail / Office 1,205 SF

#### Join Tenants



Food Lion, Sheetz, CVS, ABC, River's Bend Eyecare, Rumble & Associates, Morris Cardiovascular, Touchstone Bank, Rudy Coyner & Associates, Allstate, Marco's Pizza, El Caporal, Native Sun Tan, Paddy's Pub  
**NOW OPEN! Bon Secours Family Care, Evalasting Child Development**



### CONTACT

Sean Eichert, (804) 419-2295  
seichert@realestateservicesco.com, realestateservicesco.com

Real Estate Services Co.  
13281 River's Bend Blvd, Suite 201, Chester, VA 23836



## TENANT LIST



**Join these successful retailers and businesses at River's Bend!**

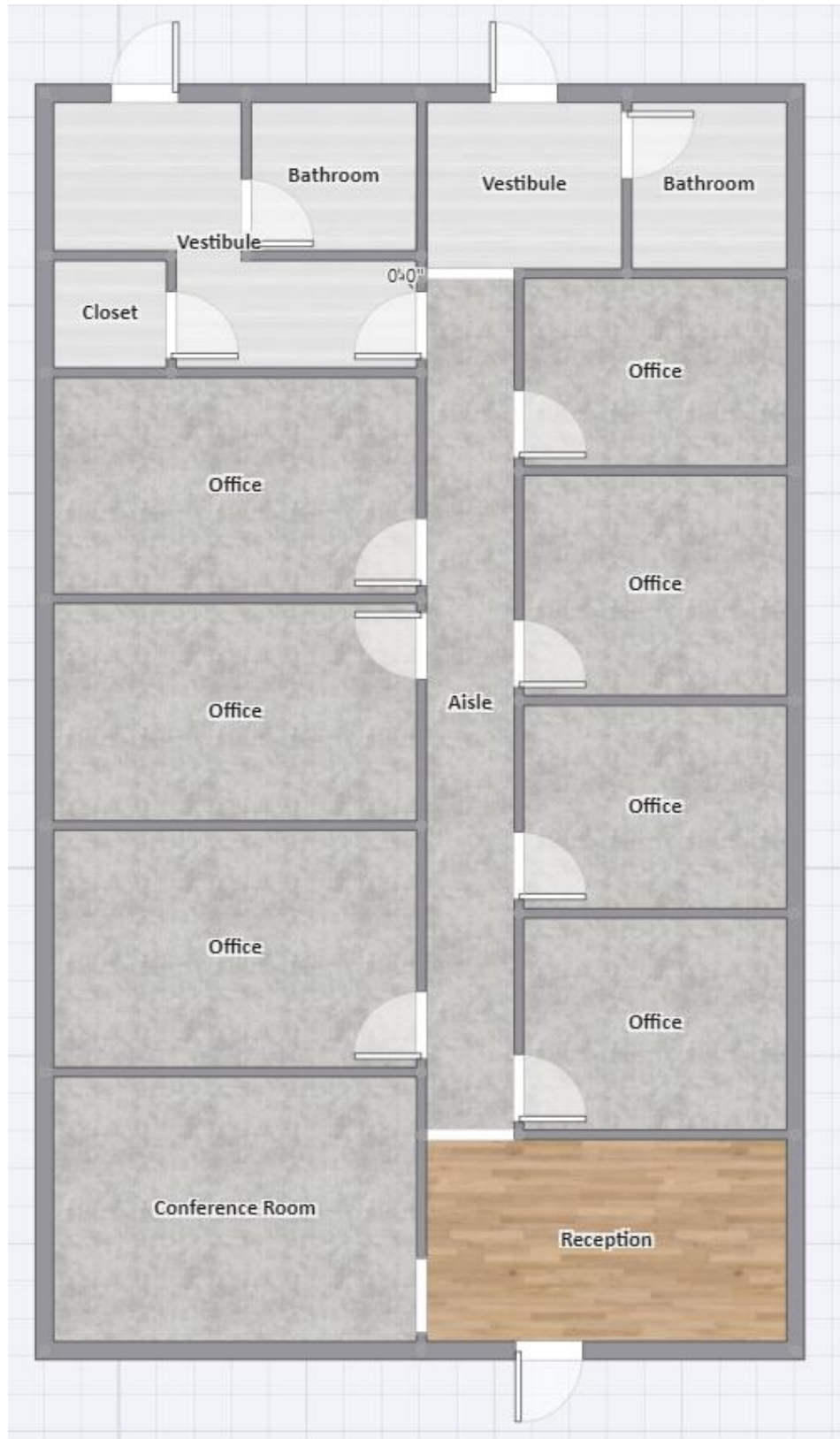




# AREA MAP



# SUITE 13125



# SUITE 249

