

FOR SALE/LEASE

REGENCY OFFICE & MEDICAL PARK



27650-27778 FRANKLIN ROAD
SOUTHFIELD, MI 48034

PROPERTY HIGHLIGHTS:

- Office space available for lease
- Ideal use for Office, Medical, Research
- Abundant parking
- Separately-metered utilities
- New management
- Immediate access to I-696
- Recently completed renovations

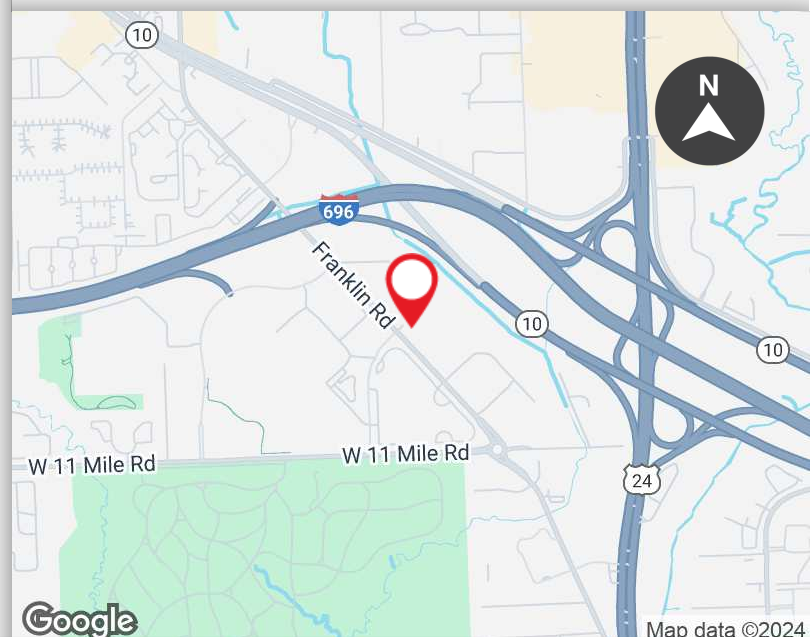
FOR MORE INFORMATION PLEASE CONTACT:



ROBERT MOON
robert.moon@freg.com

248.324.2000

eCODE 032



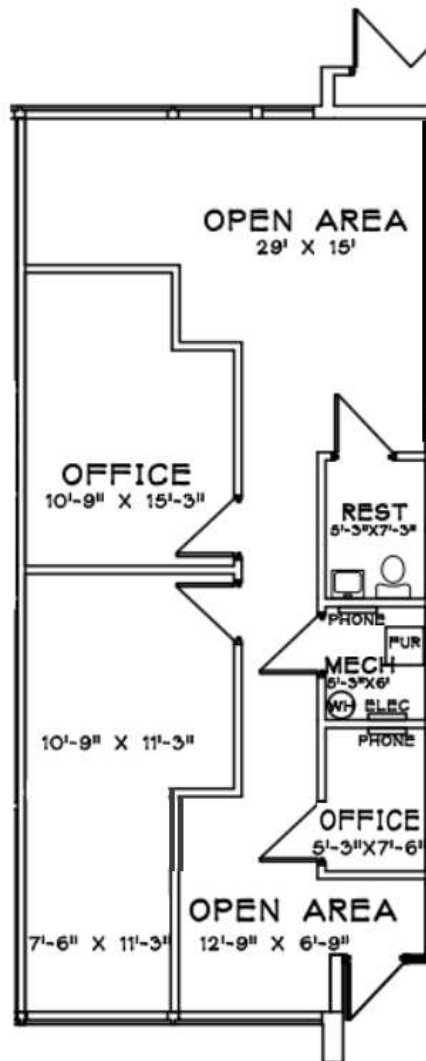
The information provided herein along with any attachment(s) was obtained from sources believed to be reliable, however, Friedman Real Estate makes no guarantees, warranties, or representations as to the completeness or accuracy of such information and legal counsel is advised. All information provided is subject to verification and no liability for reliance on such information or errors or omissions is assumed. The presentation of this property is submitted subject to errors, omissions, change of price or conditions, prior sale or lease, or withdrawal without notice. Copyright © 2024 Friedman Real Estate. All rights reserved.

REGENCY OFFICE & MEDICAL PARK PROPERTY **AVAILABILITY**

AVAILABLE SUITES

SPACE	LEASE RATE	LEASE TYPE	SIZE (SF)
27698	\$16.00 - 18.00 SF/yr	plus Utilities	1,026 SF
27766	\$16.00 - 18.00 SF/yr	plus Utilities	1,387 SF

REGENCY OFFICE & MEDICAL PARK
27698 FLOOR PLAN



REGENCY
OFFICE PARK

BUILDING G

SUITE 27698
FRANKLIN ROAD
SOUTHFIELD, MICHIGAN
1,026 USF

NOT TO SCALE

REGENCY OFFICE & MEDICAL PARK
27766 FLOOR PLAN

