



For Lease

# 1700 Post Street San Francisco, CA 94115

## Restaurant & Bar Spaces Available in the heart of Japantown

### Property Highlights

- Restaurant and Bar - 2nd Floor  
±2,500 SF (main floor = ±1,823 SF, mezzanine = ±677 SF)
- Bar - 2nd Floor  
±2,967 SF (main floor = ±1,865 SF, mezzanine = ±1,102 SF)
- Lower Level  
±2,520 SF
- Busy high identity location
- Surrounded by restaurants, bars, and retail
- Available Now

Copyright © 2023 Colliers. Information herein has been obtained from sources deemed reliable, however its accuracy cannot be guaranteed. The user is required to conduct their own due diligence and verification.

**Contact us:**

**Peter Mikacich**  
Senior Vice President  
+1 415 288 7815  
peter.mikacich@colliers.com  
Lic. #01133104

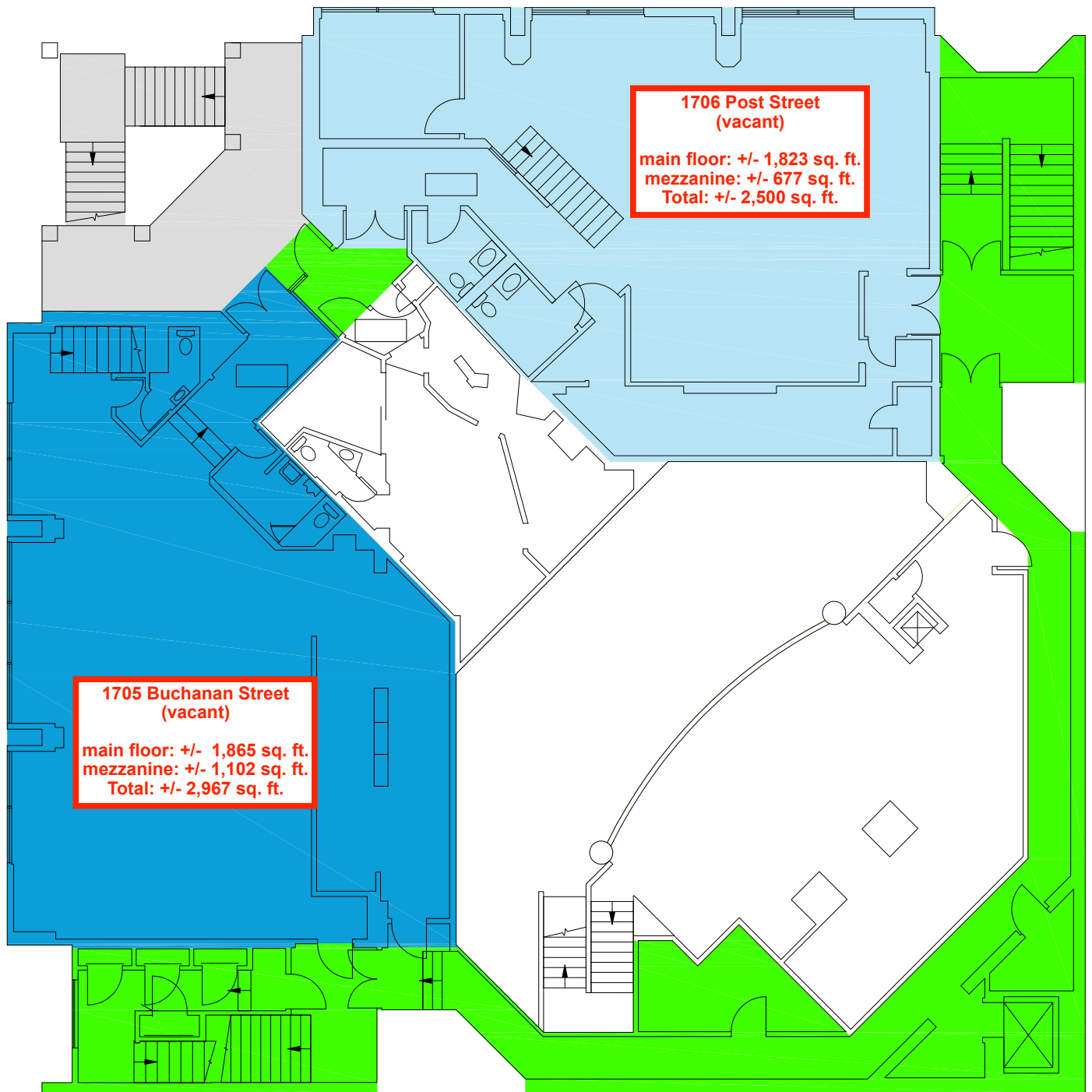
**Ian Armstrong**  
Associate  
+1 415 510 4724  
ian.armstrong@colliers.com  
Lic. #02069601

**Colliers**  
101 Second Street  
11th Floor  
San Francisco, CA 94105  
P: +1 415 288 7872

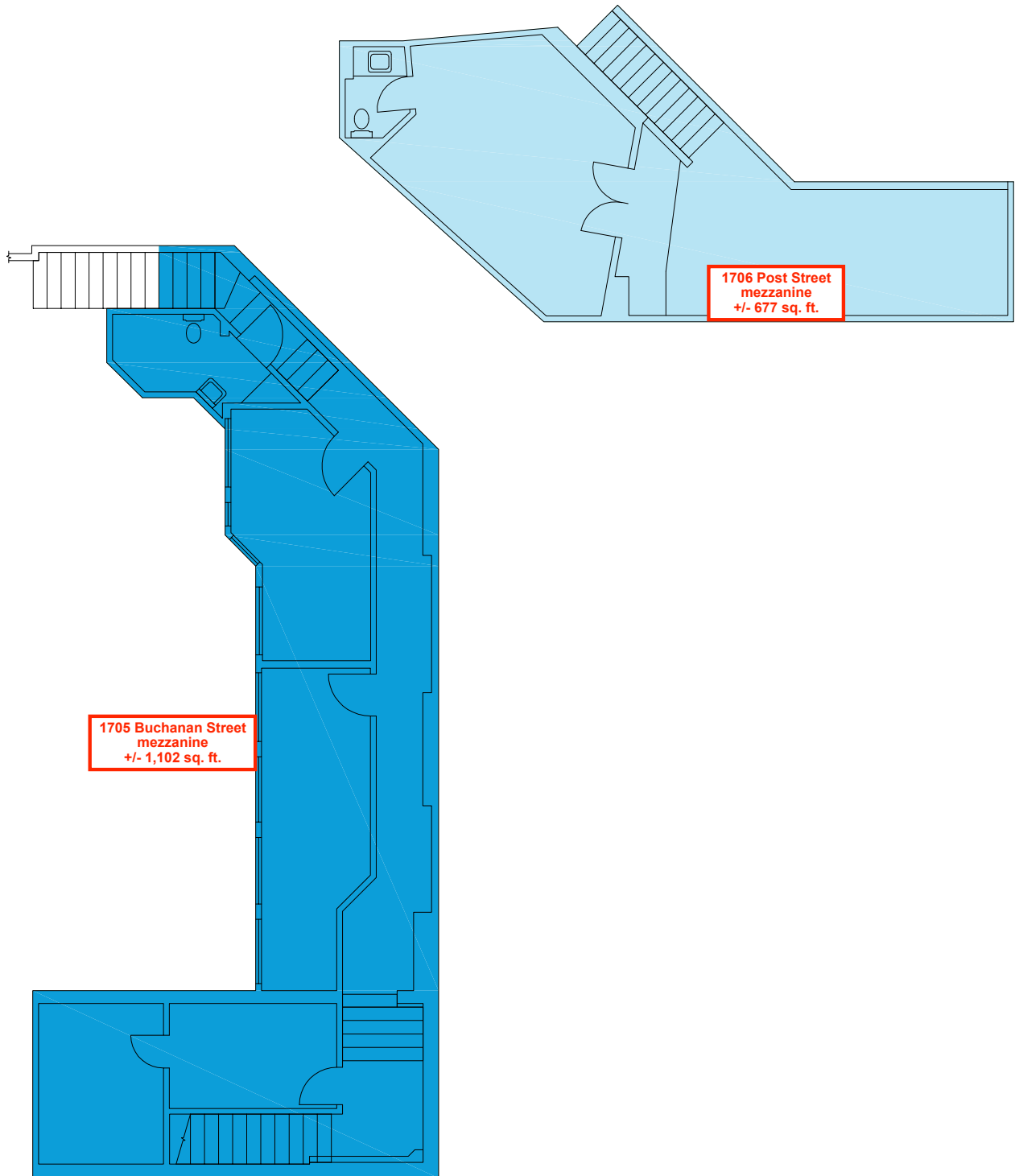
# For Lease - 1700 Post Street, San Francisco



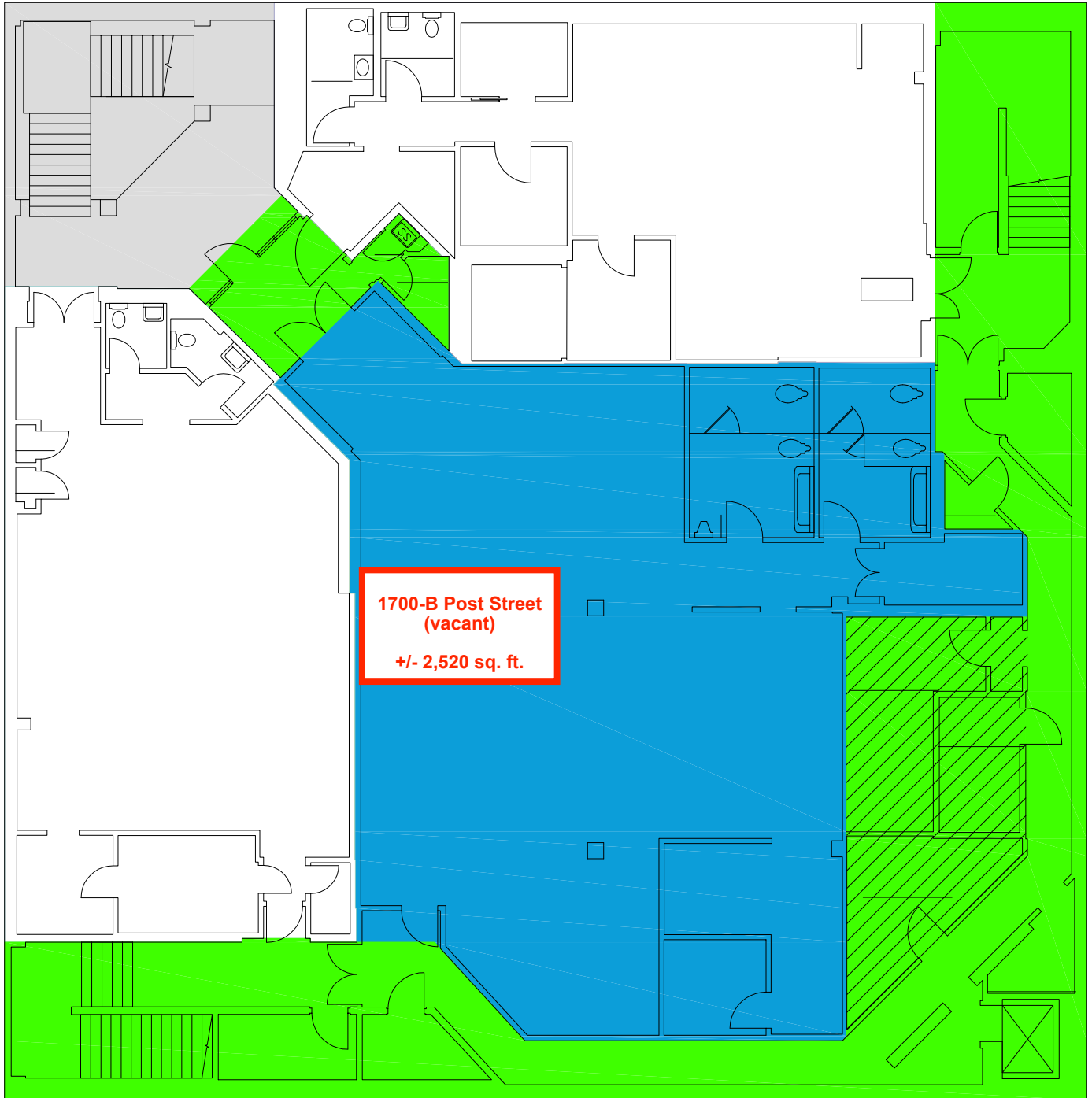
# Floor Plan - Second Floor



# Floor Plan - Second Floor Mezzanines



# Floor Plan - Basement

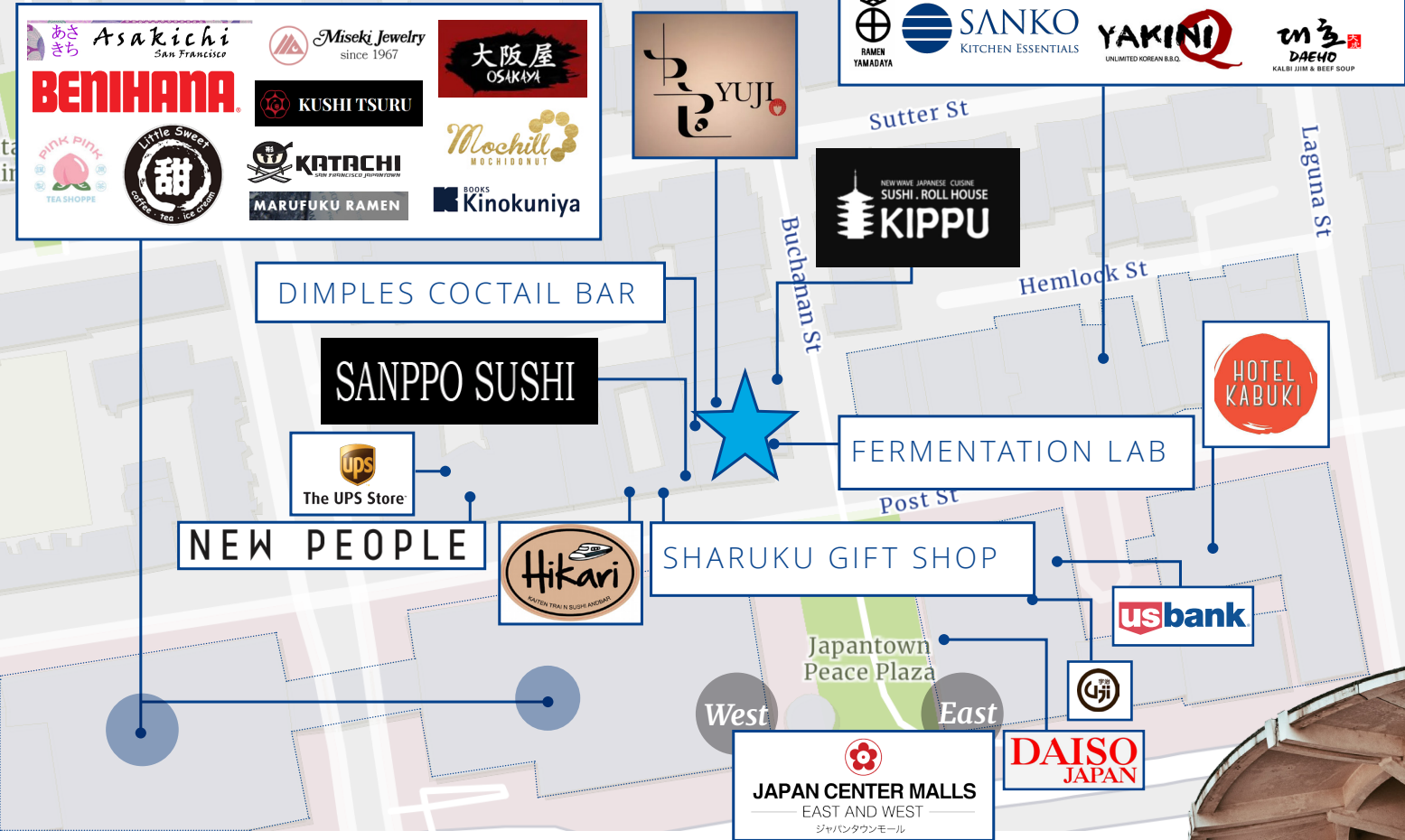


 Common Area

# Location



# Co-Tenancy



Across the street from 1700 Post is the Peace Plaza, which was created and donated in the mid-1960s as a gift from Osaka, San Francisco's sister city in Japan. It was inspired by a series of pagodas that exists in Japan's ancient capital, Nara, and is a symbol of goodwill and friendship. The "eternal flame" monument, as well as other elements within the plaza, add to the historical and cultural ambiance of the plaza, and is the reason why the Peace Plaza is host to many community celebrations such as the Cherry Blossom Festival, Nihonmachi Street Fair, the Summer Obon Festival, and the Year-End Festival.

Source: <https://sfrecpark.org/881/Japantown-Peace-Plaza>



The Eternal Flame Monument ▶

# Demographics

2023 Summary	0.25 Mile	0.5 Mile	1 Mile
Total Population	7,220	28,934	141,329
Total Households	3,696	15,685	74,240
Total Family Households	1,096	4,450	19,366
Average Household Size	1.86	1.78	1.80
Median Age	47.2	43.7	39.6
Population Age 21+	6,671	26,160	126,087
Population by Sex			
Male Population	3,254	13,351	72,732
% Male	45.1%	46.1%	51.5%
Female Population	3,966	15,583	68,597
% Female	54.9%	53.9%	48.5%
Income & Households			
Median Household Income	\$102,458	\$102,082	\$110,909
Average Household Income	\$163,931	\$165,458	\$110,909
Per Capita Income	\$86,064	\$90,145	\$92,840
Business Summary			
Total Daytime Population	9,298	36,828	144,969
Daytime Population: Workers	6,395	25,297	97,162
Daytime Population: Residents	2,903	11,531	47,807





Colliers



1700 Post Street

For Lease

1700 Post Street  
San Francisco, CA 94115

Contact us:

**Peter Mikacich**

Senior Vice President  
+1 415 288 7815  
peter.mikacich@colliers.com  
Lic. #01133104

**Ian Armstrong**

Associate  
+1 415 510 4724  
ian.armstrong@colliers.com  
Lic. #02069601