

4200-5101 TRIANGLE LANE

TRIANGLE LANE OFFICE COMPLEX

Murrysville, PA

APPROXIMATELY 3,800 - 30,540 SF IN 2 CONNECTED BUILDINGS

AVAILABLE FOR LEASE



**MOVE-IN READY SUITES
IMMEDIATELY AVAILABLE**



CBRE

THE OPPORTUNITY



Floor Sizes of
8,940 SF & 10,800 SF



Move-In Ready Suites
Immediately Available



Park like Campus Allows
For **Outdoor Workspaces**



Exterior
Balconies



Climate Controlled Sky Bridge
Connects the Buildings

\$17.50/SF

Modified Gross Rent

**UP TO
21,600 SF**

Contiguous

**UP TO
6/1000**

Parking Ratio

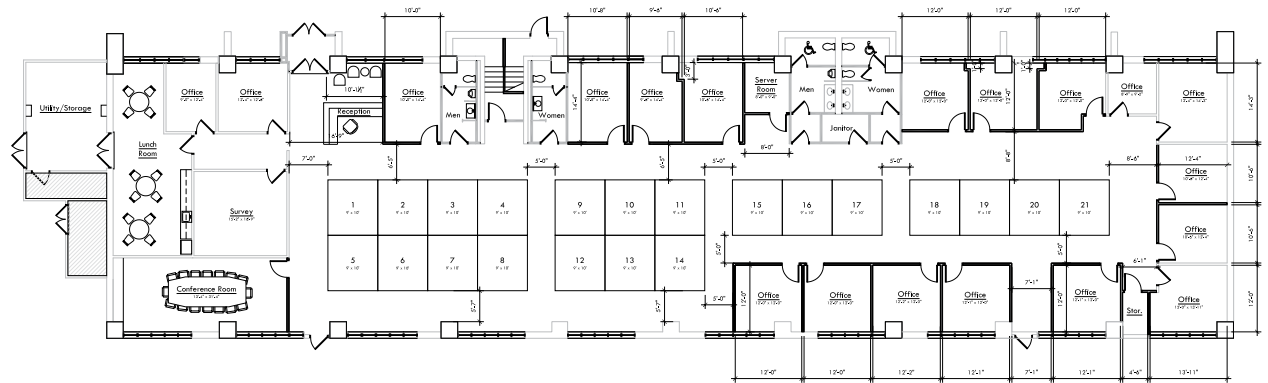
< 1 MILE

to Numerous Restaurants
& Grocery Options

NO

Business Privilege Tax
Take Advantage of Westmoreland
County Tax Rate

4200 1ST FLOOR

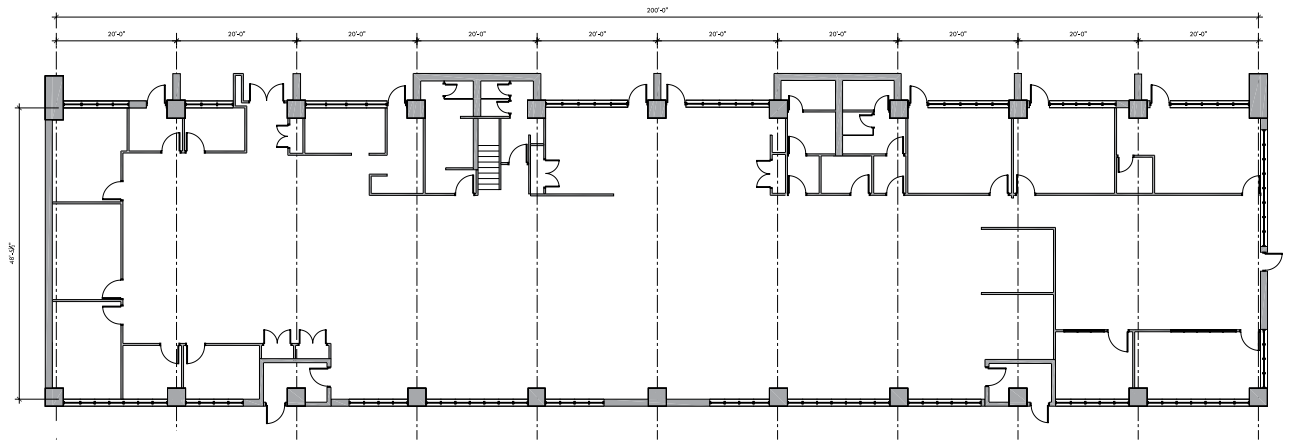


3,800 - 10,800 SF PER FLOOR

FLOOR PLANS

MOVE-IN
READY

4200
2ND FLOOR



3,800 - 10,800 SF PER FLOOR



TRIANGLE LANE

FLOOR PLANS

FLEX WAREHOUSE/ STORAGE

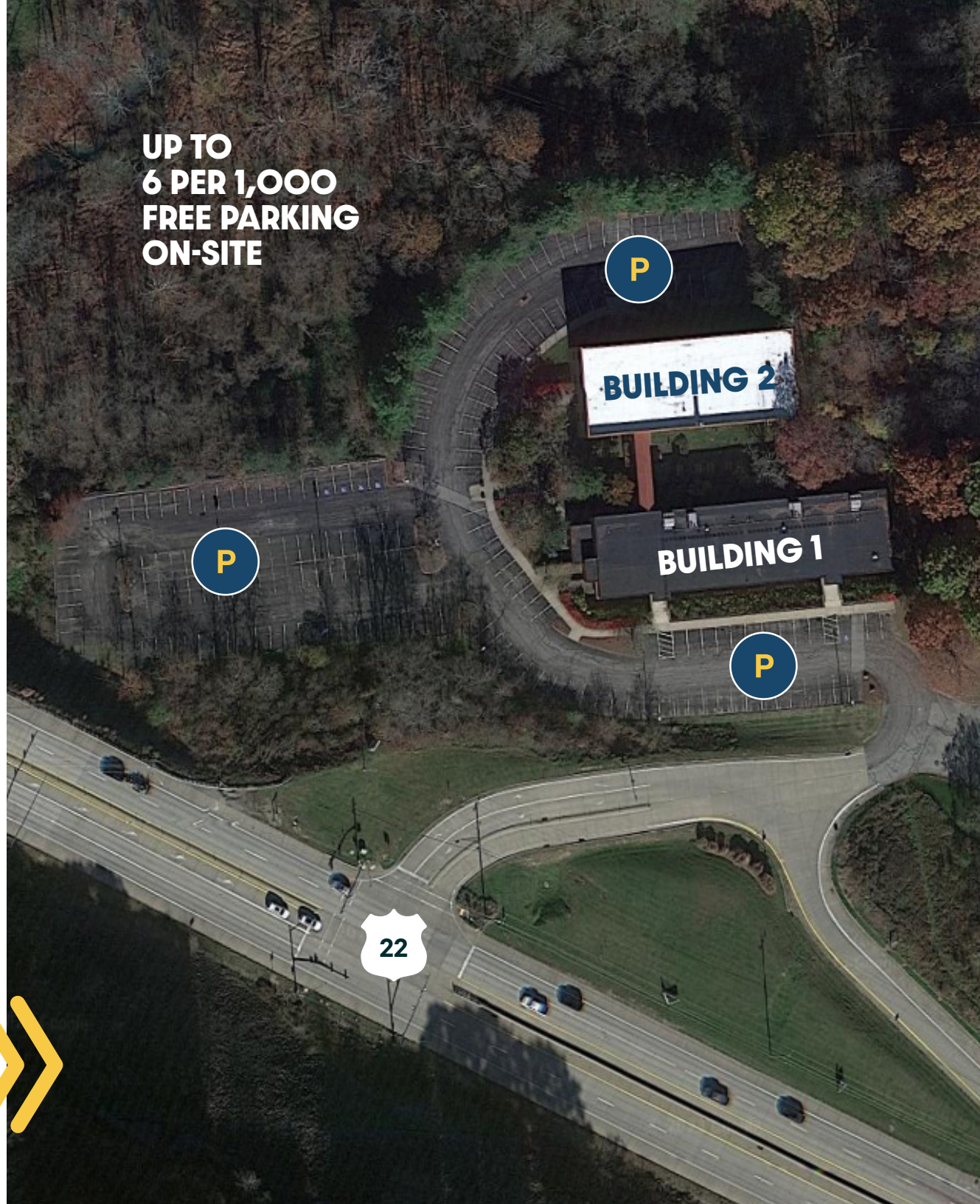
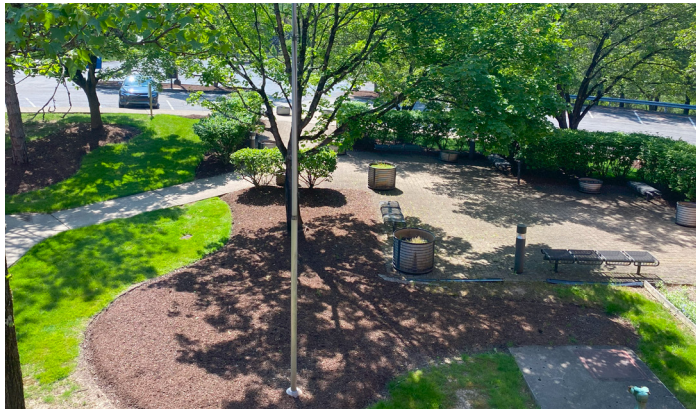
**5101
1ST FLOOR**



8,940 SF PER FLOOR



THE SPACE



UP TO
6 PER 1,000
FREE PARKING
ON-SITE

PERFECTLY POSITIONED

TRIANGLE LANE



4200-5101 TRIANGLE LANE

TRIANGLE LANE OFFICE COMPLEX

CONTACT

Andrew B Miller, CCIM

Senior Vice President
+1 412 394 9807
andrew.miller@cbre.com

Charlie Must, CCIM

Senior Associate
+1 412 394 9806
charlie.must@cbre.com

©2025 CBRE, Inc. All rights reserved. This information has been obtained from sources believed reliable, but has not been verified for accuracy or completeness. You should conduct a careful, independent investigation of the property and verify all information. Any reliance on this information is solely at your own risk. CBRE and the CBRE logo are service marks of CBRE, Inc. All other marks displayed on this document are the property of their respective owners, and the use of such logos does not imply any affiliation with or endorsement of CBRE. Photos herein are the property of their respective owners. Use of these images without the express written consent of the owner is prohibited.

CBRE