



INDUSTRIAL BUILDING FOR SUBLEASE

7775 Gary Watson Point
Colorado Springs, CO 80915

PROPERTY SPECIFICATIONS

LOCATION: 7775 Gary Watson Point
Colorado Springs, CO 80915

BUILDING SIZE: +/- 10,000 SF

LOT SIZE: +/- 2.68 ac

BUILT: 2021

LEASE RATE: Contact Broker

ELECTRICAL OUTPUT 208V/120V

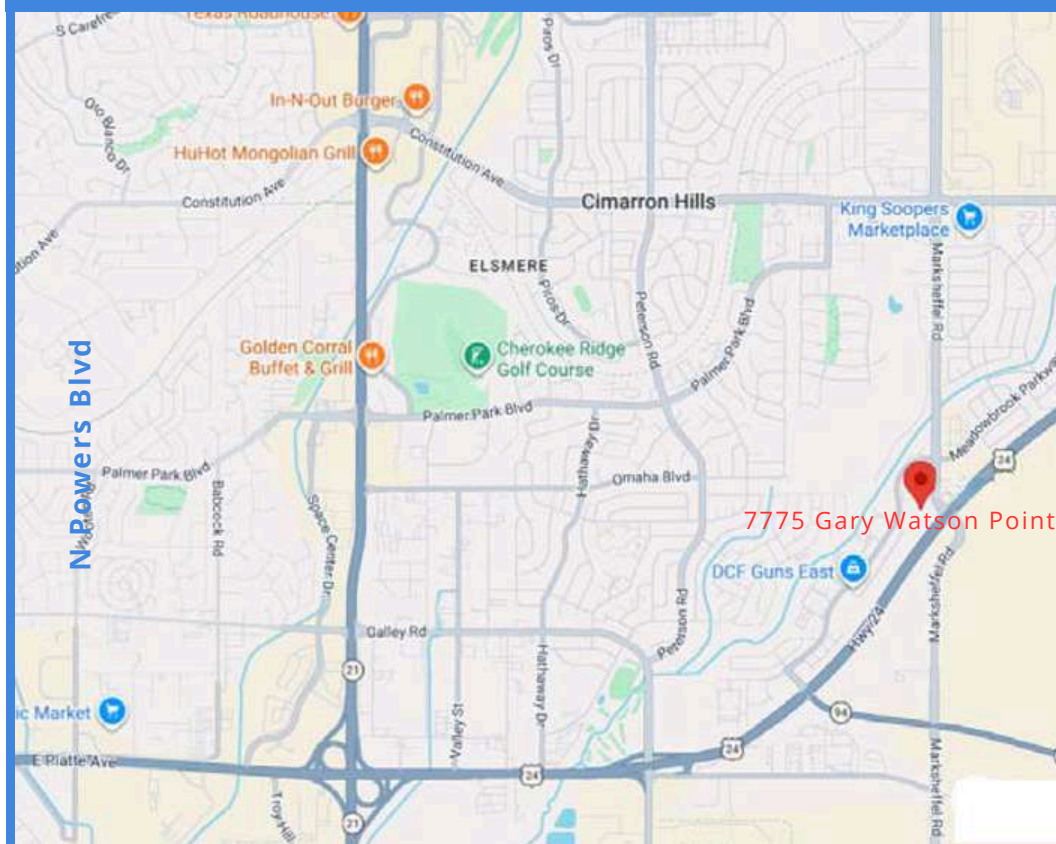
ZONING: CS- CADO

USE: Well-suited for light industrial, flex, warehouse, or office/industrial hybrid users

ADDITIONAL INFORMATION:

- Easily accessible from Hwy 24
- Flexible zoning permits for industrial use
- secured outdoor storage, fenced yard
- Located near ongoing new housing construction

MAP



JASON CASTRO
President



jason@peakcp.net
719.227.9987

INDUSTRIAL BUILDING FOR SUBLEASE

7775 Gary Watson Point
Colorado Springs, CO 80915

INSIDE PHOTOS



The particulars, details and visuals shown herein are intended to give a general idea of the property. As such, they are not to be relied upon as statements of fact.



2727 N. Cascade Avenue,
Suite 127, Colorado Springs, CO 80907

719.227.9987

www.peakcp.net

Peak Commercial Properties believes information contained herein, while not guaranteed, is from sources they believe reliable. Price, terms, and information are subject to change without notice.