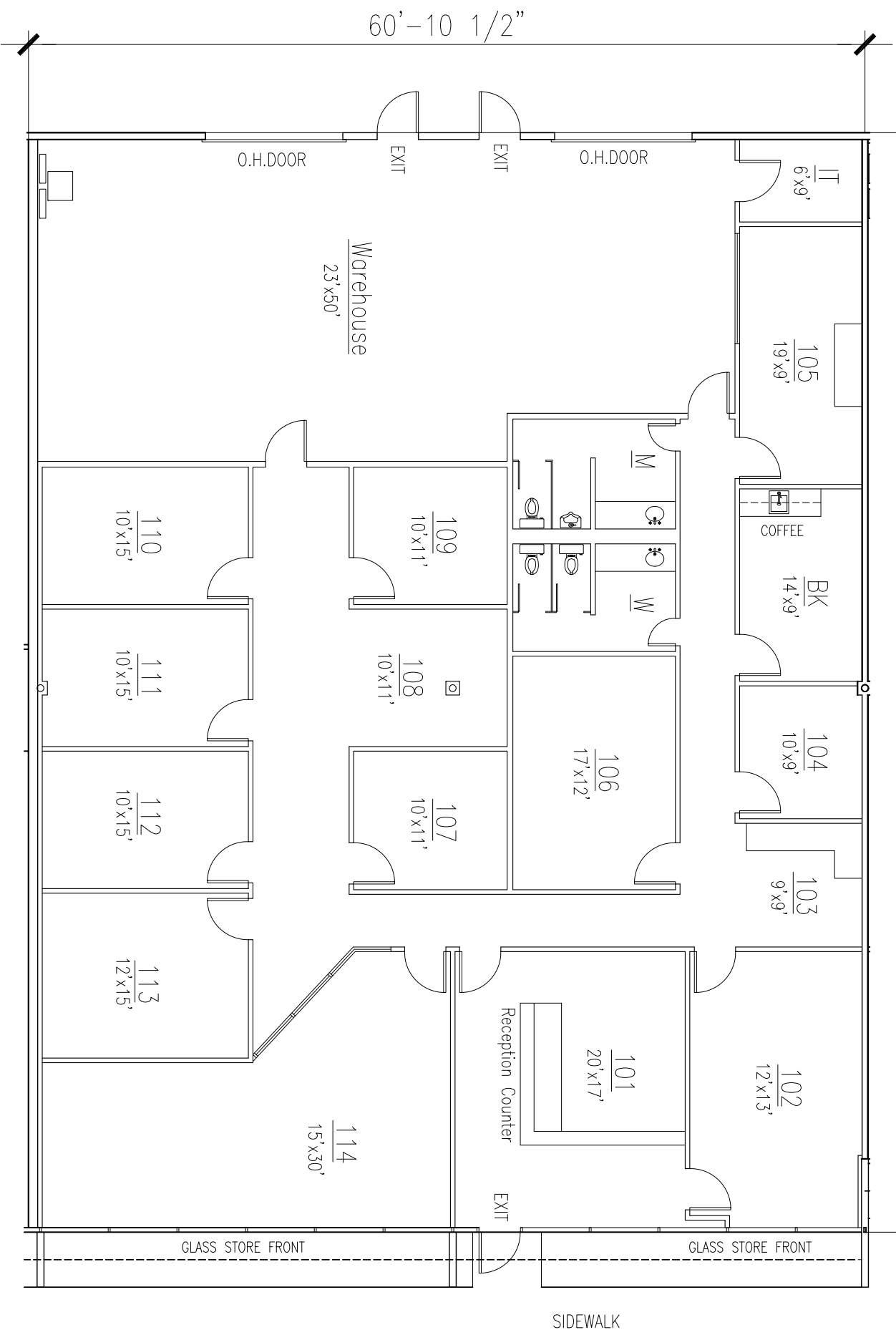
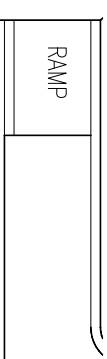


80'-0"



SUITE H FLOOR PLAN

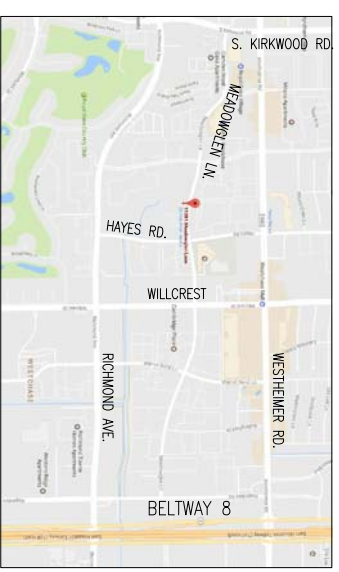


ADA PARKING

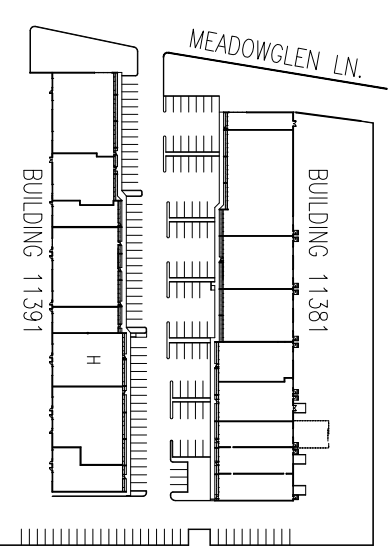
PARKINGS

MEADOWGLEN BUSINESS PARK
11391 MEADOWGLEN LN, SUITE H
HOUSTON TEXAS 77082

MAP



SITE PLAN



BUILDING SUMMARY

OFFICE AREA: 3,644 SQ. FT.
 WAREHOUSE : 1,236 SQ. FT.
 TOTAL AREA: 4,880 SQ. FT.

BUILDING FEATURES

MASTER PLANNED BUSINESS PARK
 CONCRETE TILT WALL CONSTRUCTION
 GRADE LEVEL REAR LOADING DOORS
 14' AVERAGE CLEAR HEIGHT
 ALL CONCRETE PAVING

These listings are offered subject to error, omission, prior lease, or withdrawal without notice.