



FOR LEASE | CLASS A OFFICE | DOWNTOWN SACRAMENTO

MERIDIAN PLAZA

1415 L Street | Sacramento, CA

CBRE

BUILDING FEATURES

-  **Two-block walk** to the State Capitol
-  **12-Story Class A Office**
Building across from the State Capitol & Capitol Park
-  **Panoramic views** of the State Capitol and Downtown Sacramento
-  Suites Available between **1,297–8,681 RSF**
-  **24/7 Security**
-  **Move-in ready** spec suites
-  **Professional on-site** property management and engineers
-  **On-site parking**
-  **Fully equipped** fitness center
-  **New!** Conferencing facility
-  **Dry cleaning** pick-up and delivery service
-  **Within walking distance** to a multitude of Downtown Sacramento eateries, hotels and venues



MERIDIAN PLAZA | FOR LEASE | CLASS A OFFICE | DOWNTOWN SACRAMENTO



STATE CAPITOL

MERIDIAN PLAZA

1415 L Street | Sacramento, CA

**Capitol Annex –
Estimated Completion
Q3 2027!**



FITNESS CENTER



CONFERENCING CENTER



INTERIOR FEATURES



BUILDING LOBBY

NEARBY AMENITIES

**20+ Restaurants
within a 3-Block
Radius**

LEGEND

1. Sheraton Hotel, Mayahuel, Ella
2. Pizza Rock, California Family Fitness, El Santo Cantina
3. Starbucks
4. Darling Aviary, Kodaiko Ramen, Bailarin Cellars, Beach Hut Deli
5. 24 Hour Fitness, Sauced BBQ, Chipotle, Estelle's Bakery, Fizz Champagne
6. Kimpton Sawyer, Punch Bowl
7. DOCO, Golden 1 Center, Trophy Club, U.S. Bank, T-Mobile, Kings Store
8. Yard House, Polanco Cantina
9. Bank of America, House Kitchen, Old Soul Coffee, Camden Spit & Larder
10. Morton's Steakhouse
11. BMO, Panera Bread
12. Wells Fargo, Il Fornaio

MERIDIAN PLAZA

1415 L Street | Sacramento, CA



STATE CAPITOL



Convention &
Performing Arts
District

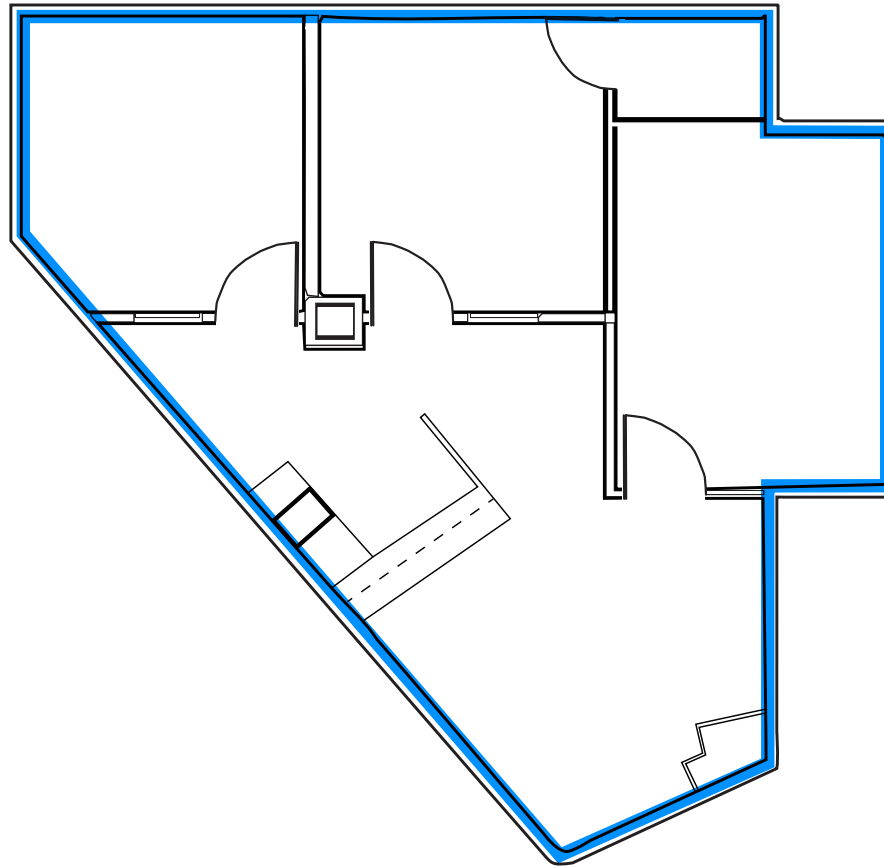
CONVENTION
CENTER



SUITE 120 | FLOOR PLAN

±1,297 RSF | *Office/Retail on the 1st Floor*

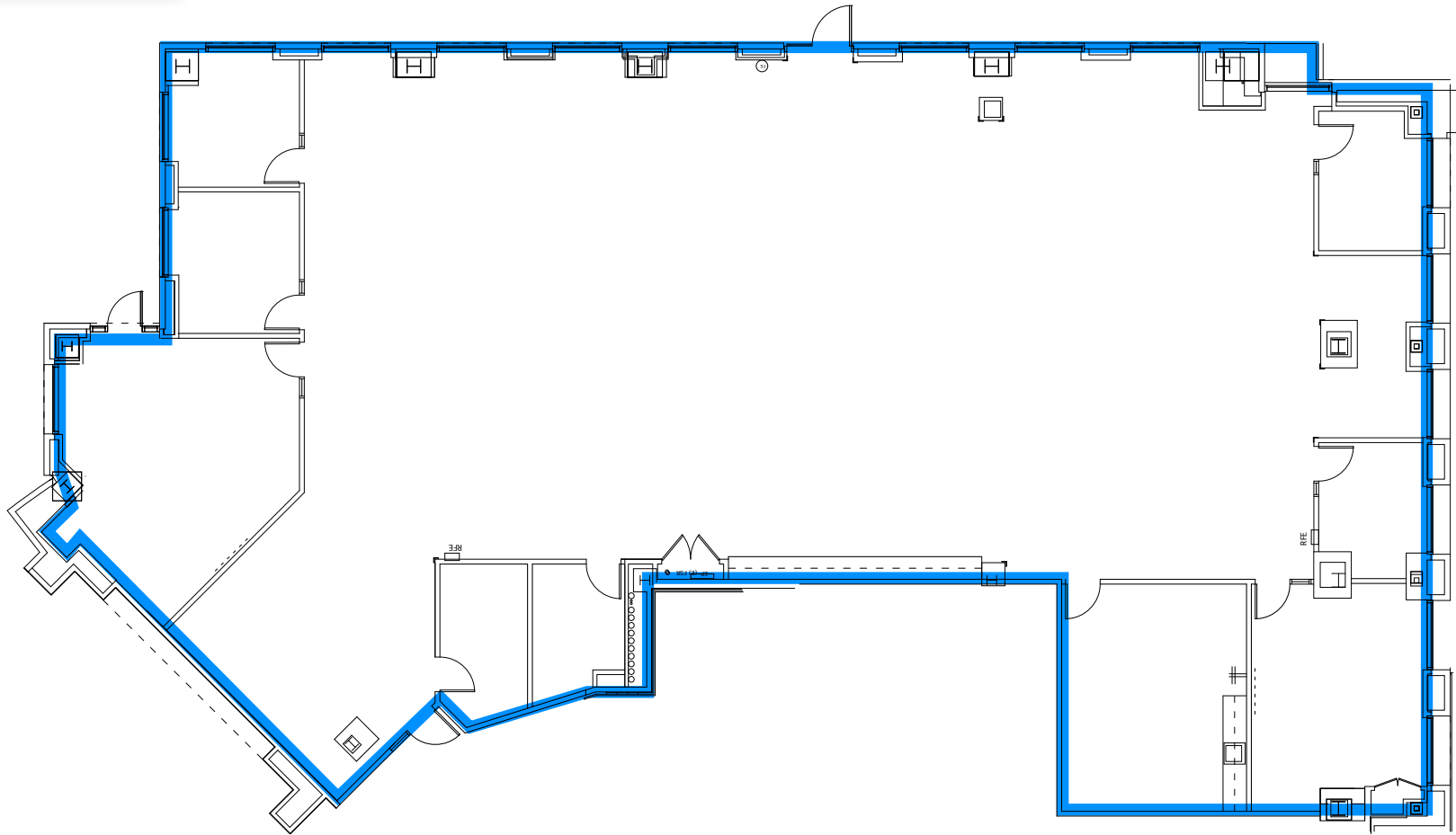
Test-Fit Sample Plan



SUITE 180 | FLOOR PLAN

±7,604 RSF | Office/Retail on the 1st floor

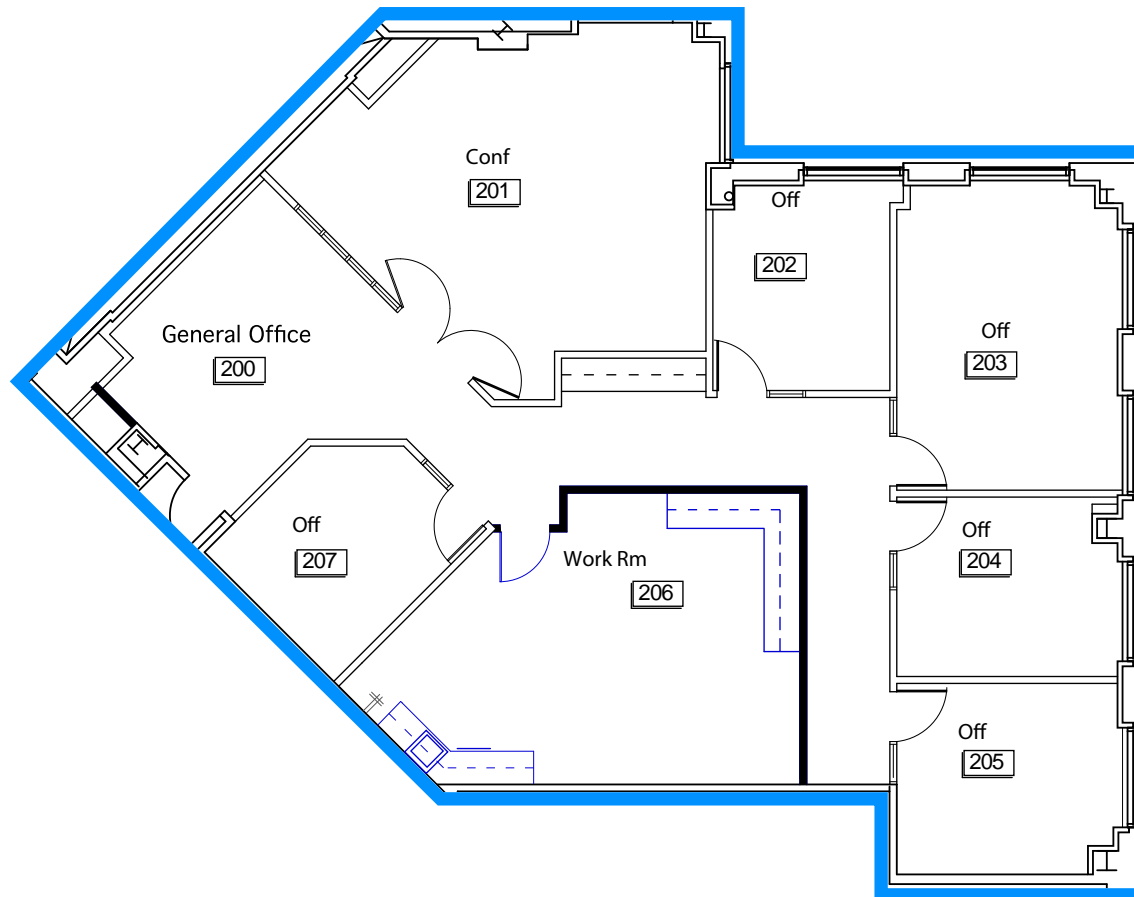
[Click to take
VIRTUAL TOUR](#)



ALL MEASUREMENTS ARE APPROXIMATE

SUITE 250 | FLOOR PLAN

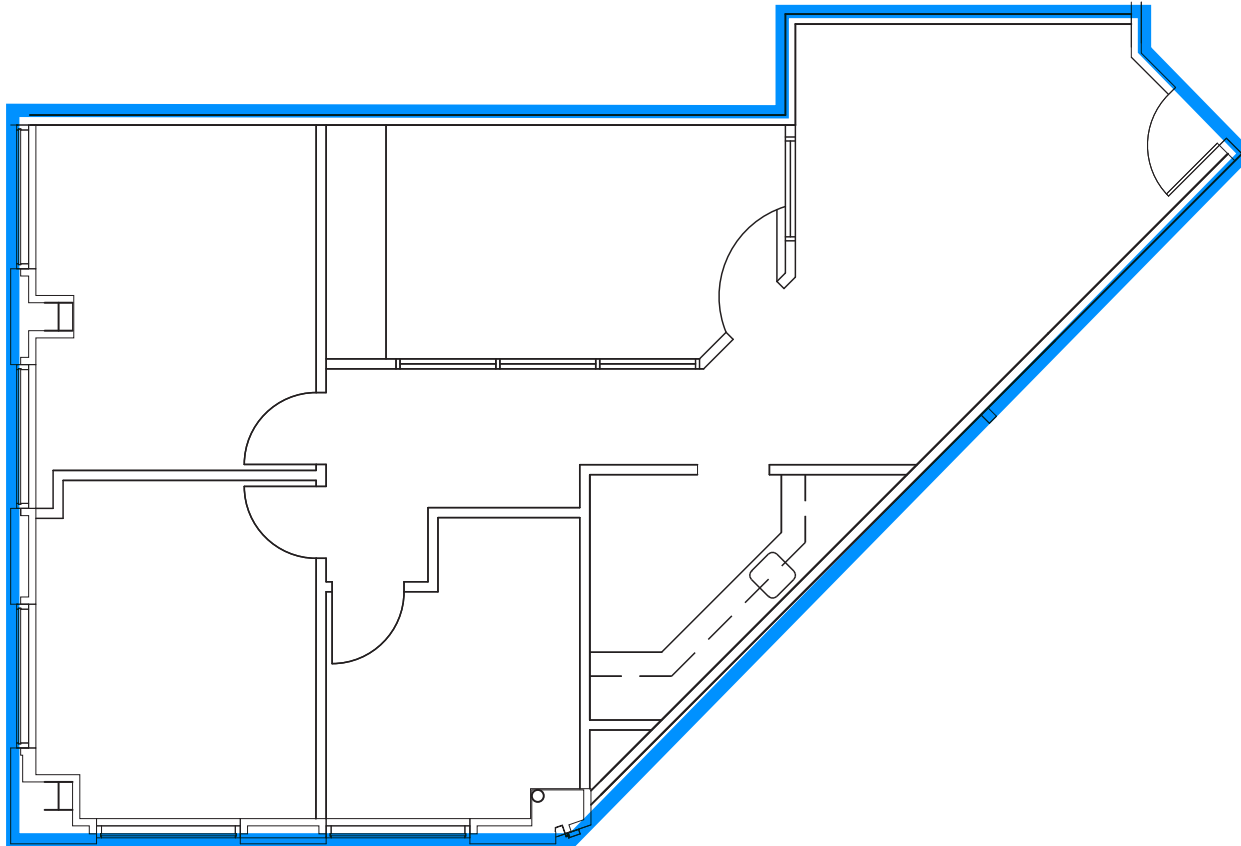
±2,870 RSF | Available 7/1/2026



MERIDIAN PLAZA | FOR LEASE | CLASS A OFFICE | DOWNTOWN SACRAMENTO

SUITE 410 | FLOOR PLAN

±1,403 RSF | Available 6/1/2026 | Capitol Views!

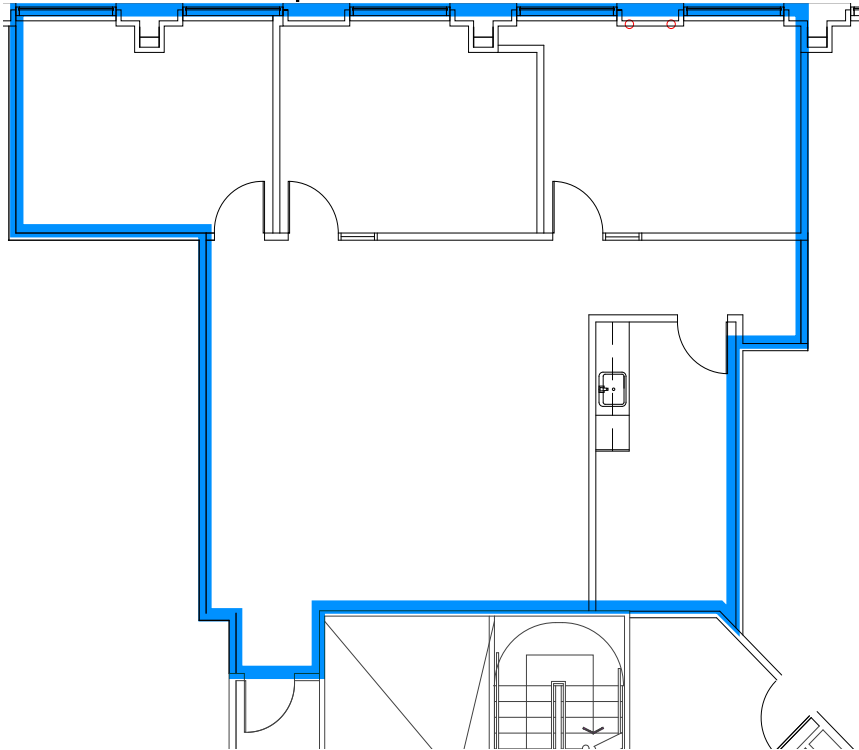


ALL MEASUREMENTS ARE APPROXIMATE

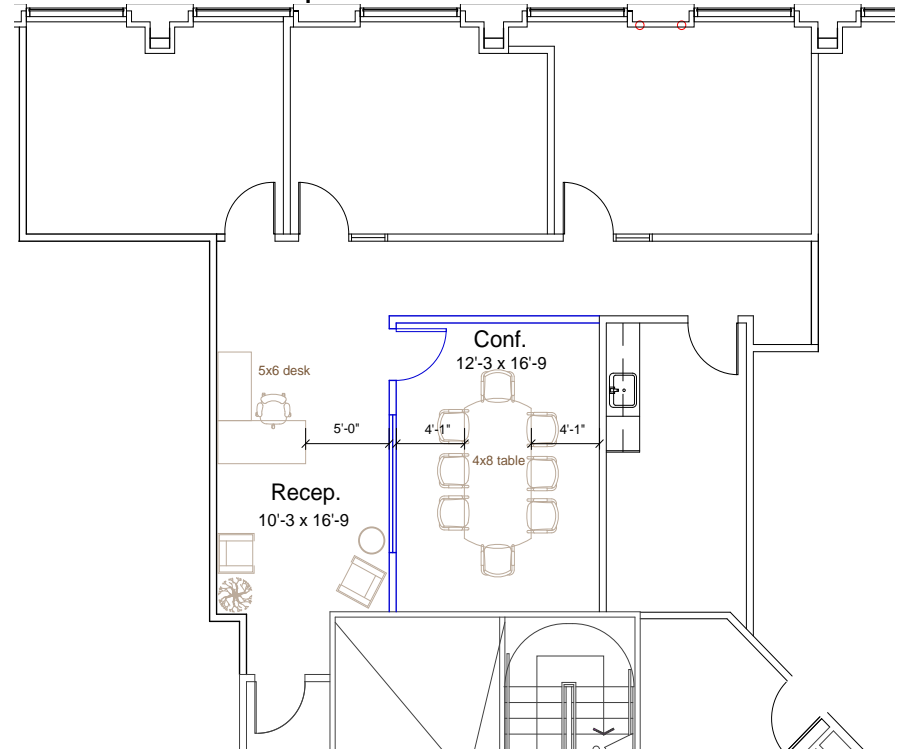
SUITE 440 | FLOOR PLAN

±1,691–4,841 RSF | *Move-In Ready!* | *Contiguous with Suite 450*

As-Built Plan

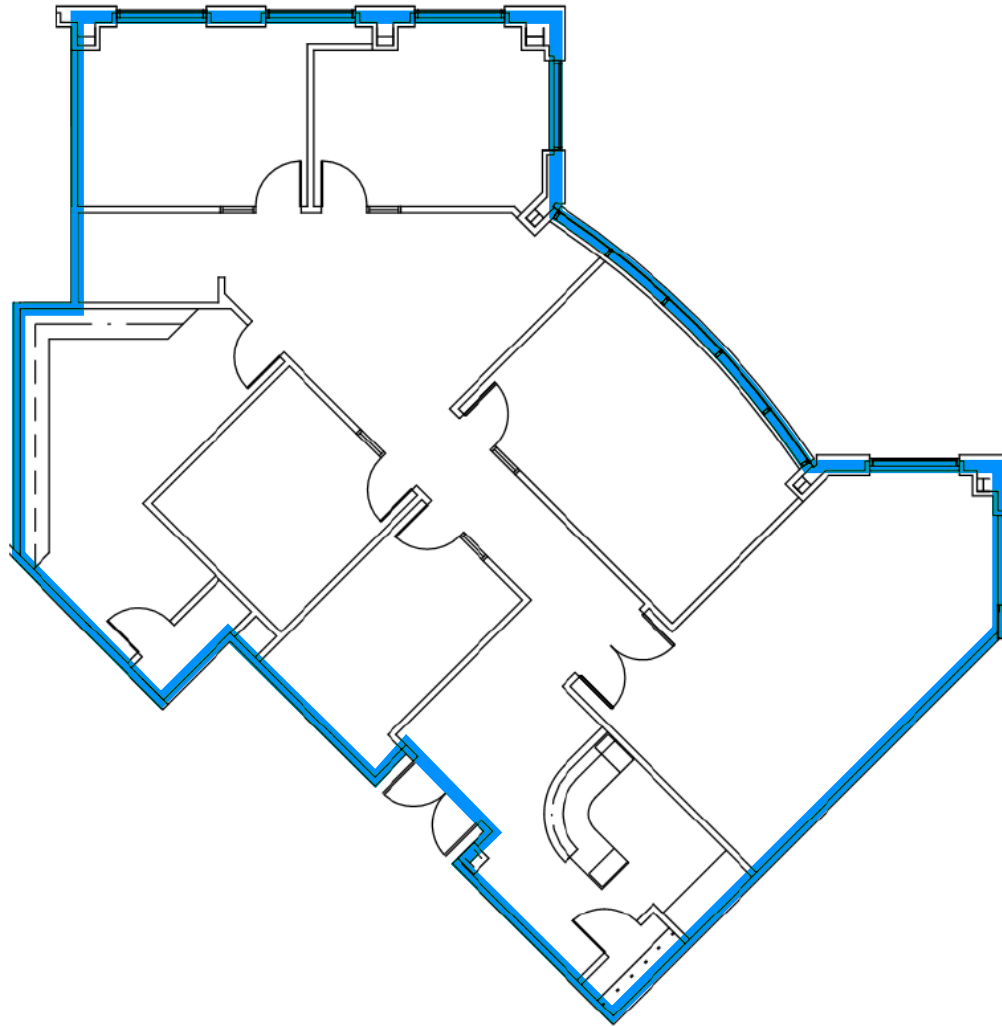


Test-Fit Sample Plan



SUITE 450 | FLOOR PLAN

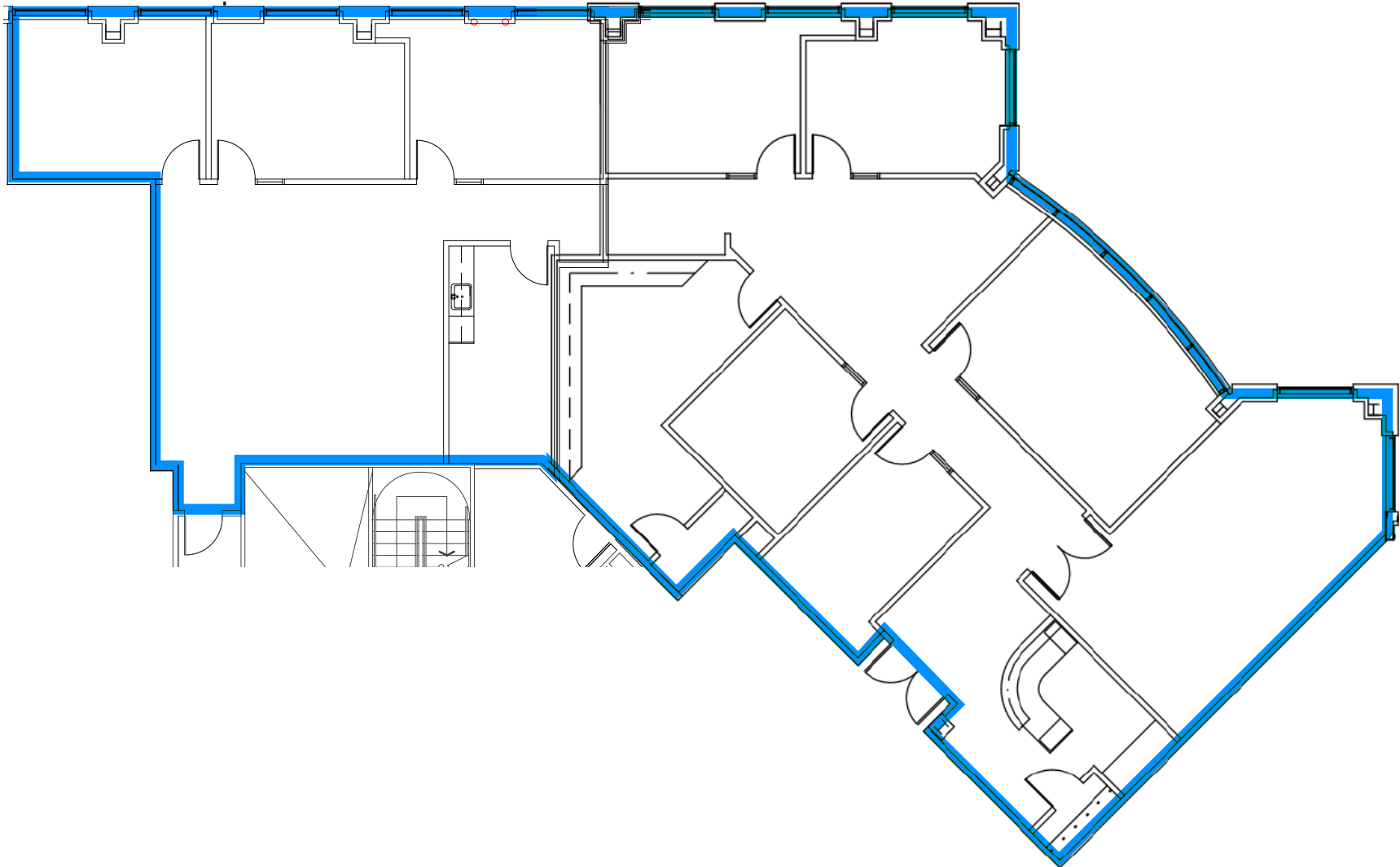
±3,150–4,841 RSF | *Contiguous with Suite 440*



MERIDIAN PLAZA | FOR LEASE | CLASS A OFFICE | DOWNTOWN SACRAMENTO

SUITES 440/450 | FLOOR PLAN

±4,841 RSF | *Contiguous*

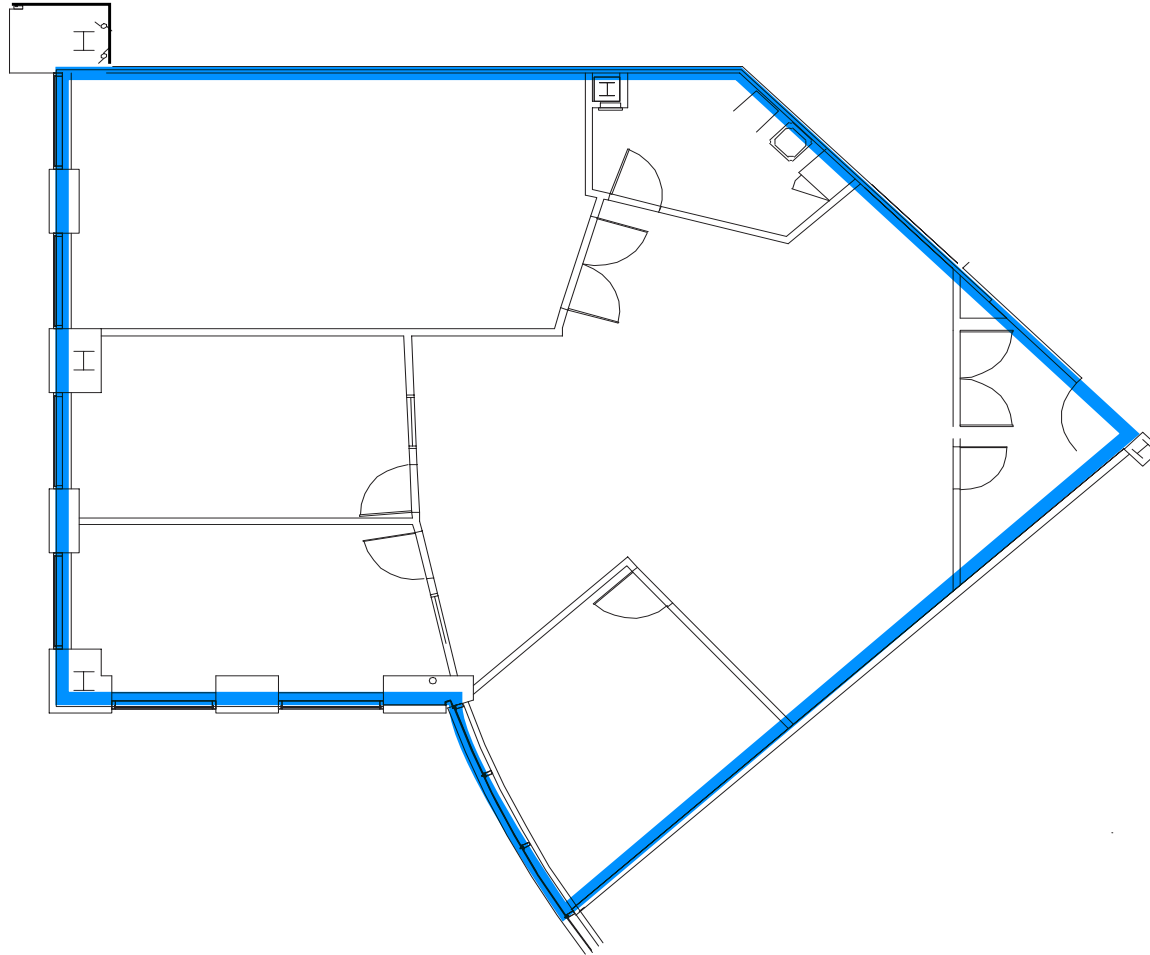


ALL MEASUREMENTS ARE APPROXIMATE

MERIDIAN PLAZA | FOR LEASE | CLASS A OFFICE | DOWNTOWN SACRAMENTO

SUITE 620 | FLOOR PLAN

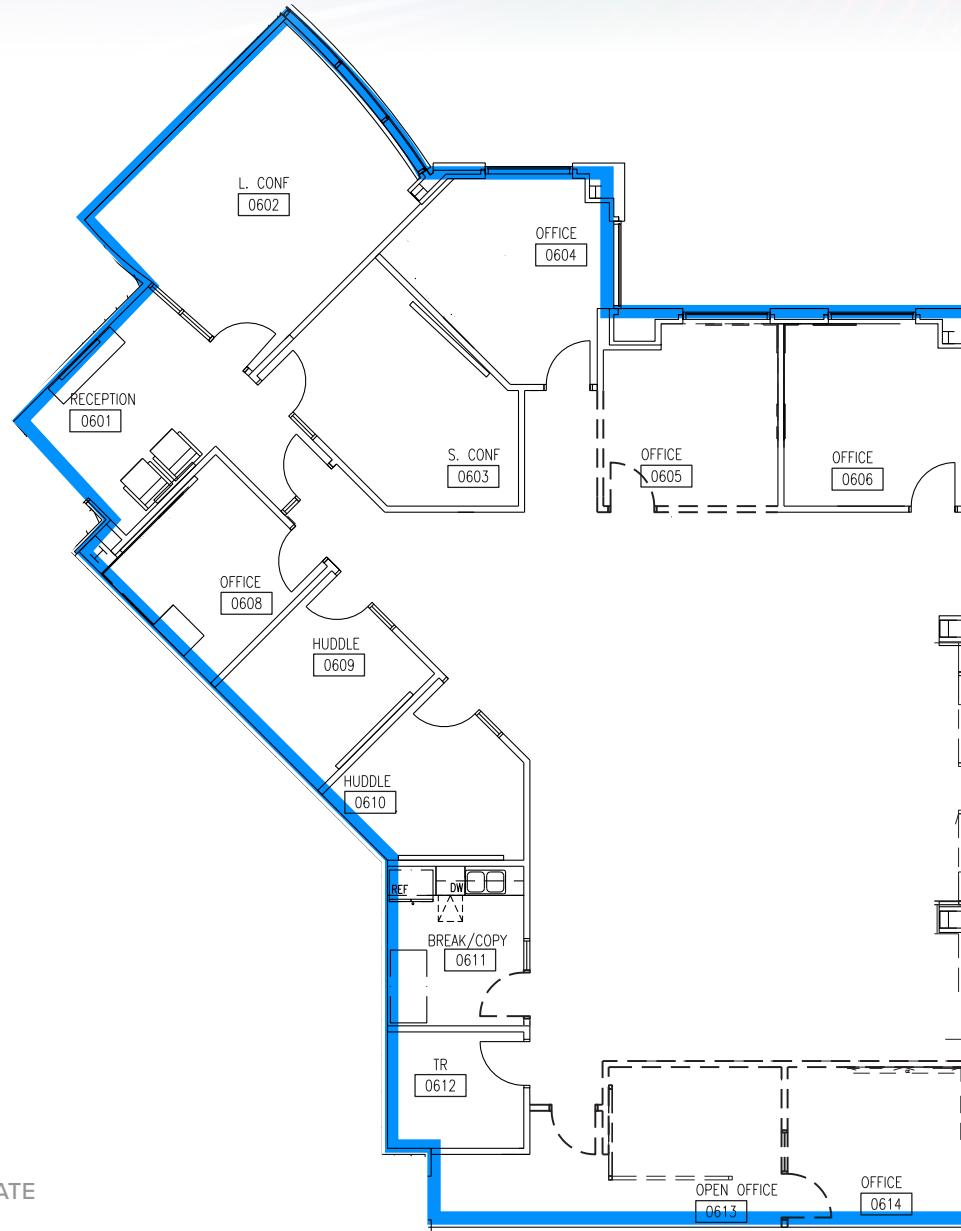
±2,639 RSF | *Capitol Views!*



ALL MEASUREMENTS ARE APPROXIMATE

SUITE 650 | FLOOR PLAN

±4,354 RSF



ALL MEASUREMENTS ARE APPROXIMATE

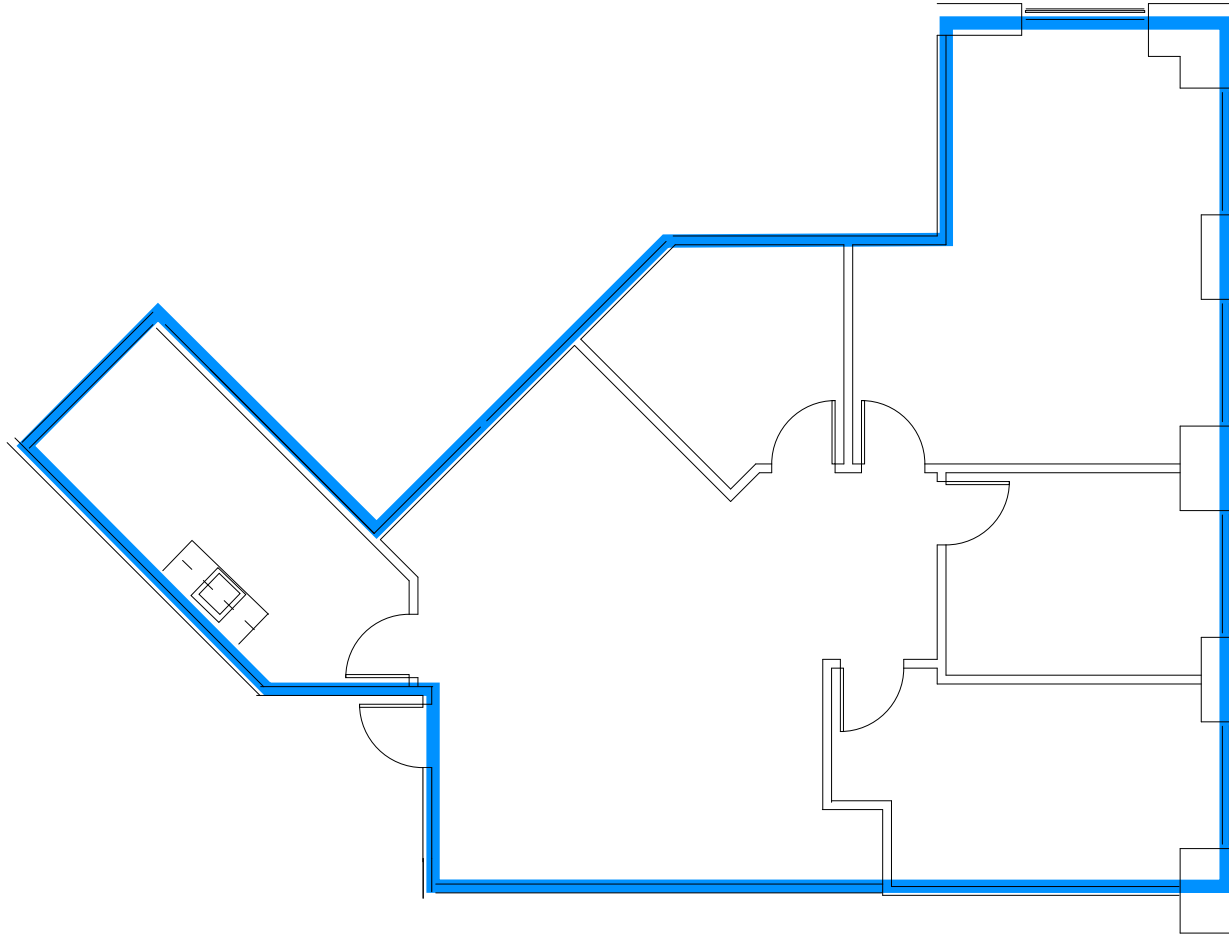
SUITE 740 | FLOOR PLAN

±8,681 RSF | *Move-In-Ready!* | *Plug & Play with Furniture*



SUITE 880 | FLOOR PLAN

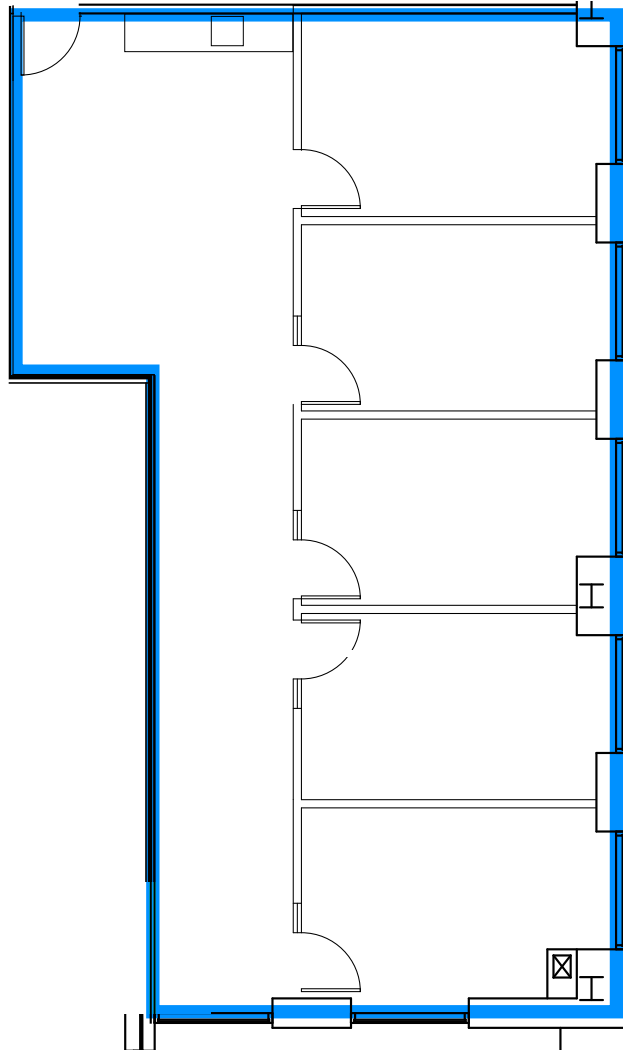
±1,610 RSF



MERIDIAN PLAZA | FOR LEASE | CLASS A OFFICE | DOWNTOWN SACRAMENTO

SUITE 940 | FLOOR PLAN

±1,655 RSF | *Move-In Ready!*

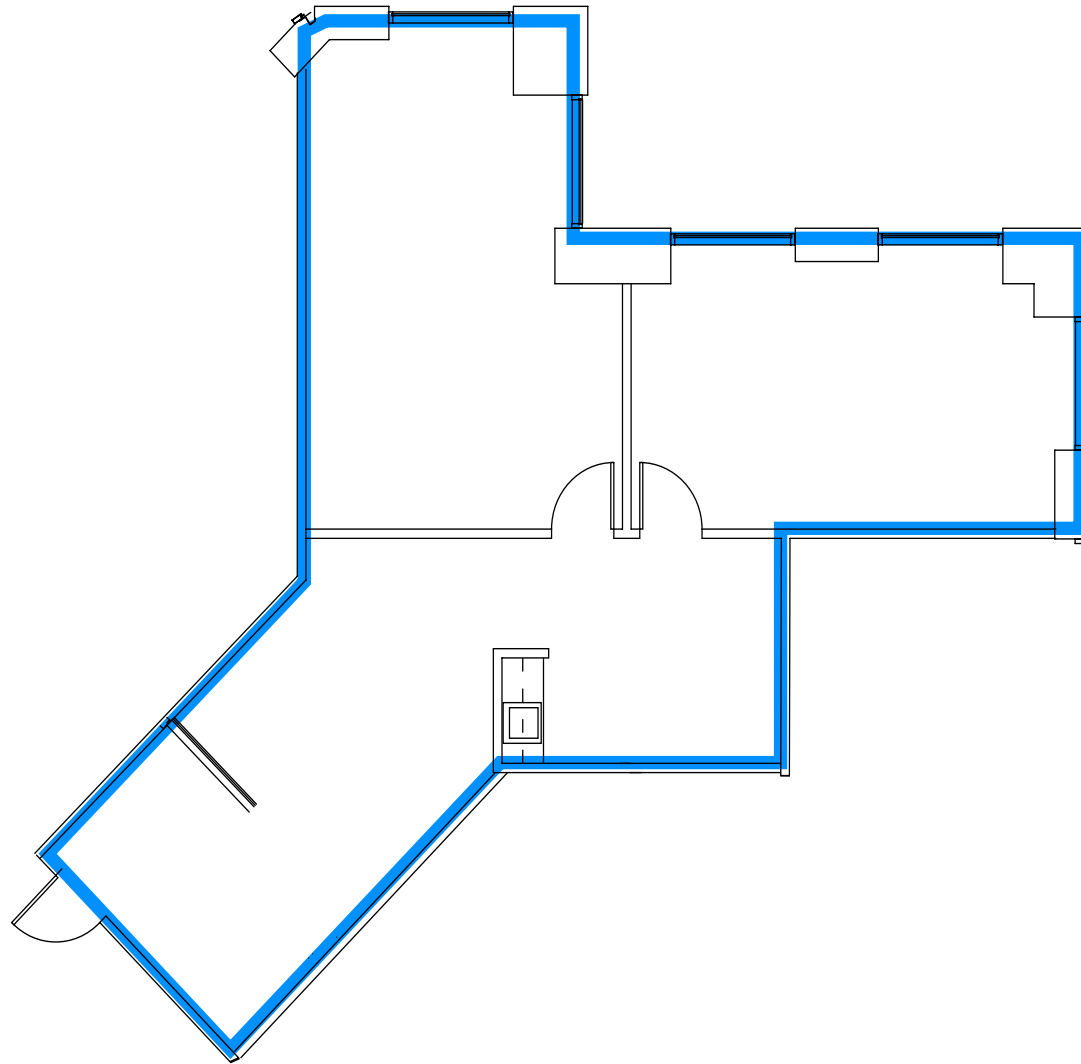


ALL MEASUREMENTS ARE APPROXIMATE

MERIDIAN PLAZA | FOR LEASE | CLASS A OFFICE | DOWNTOWN SACRAMENTO

SUITE 1185 | FLOOR PLAN

±1,308 RSF | *Move-In Ready!*

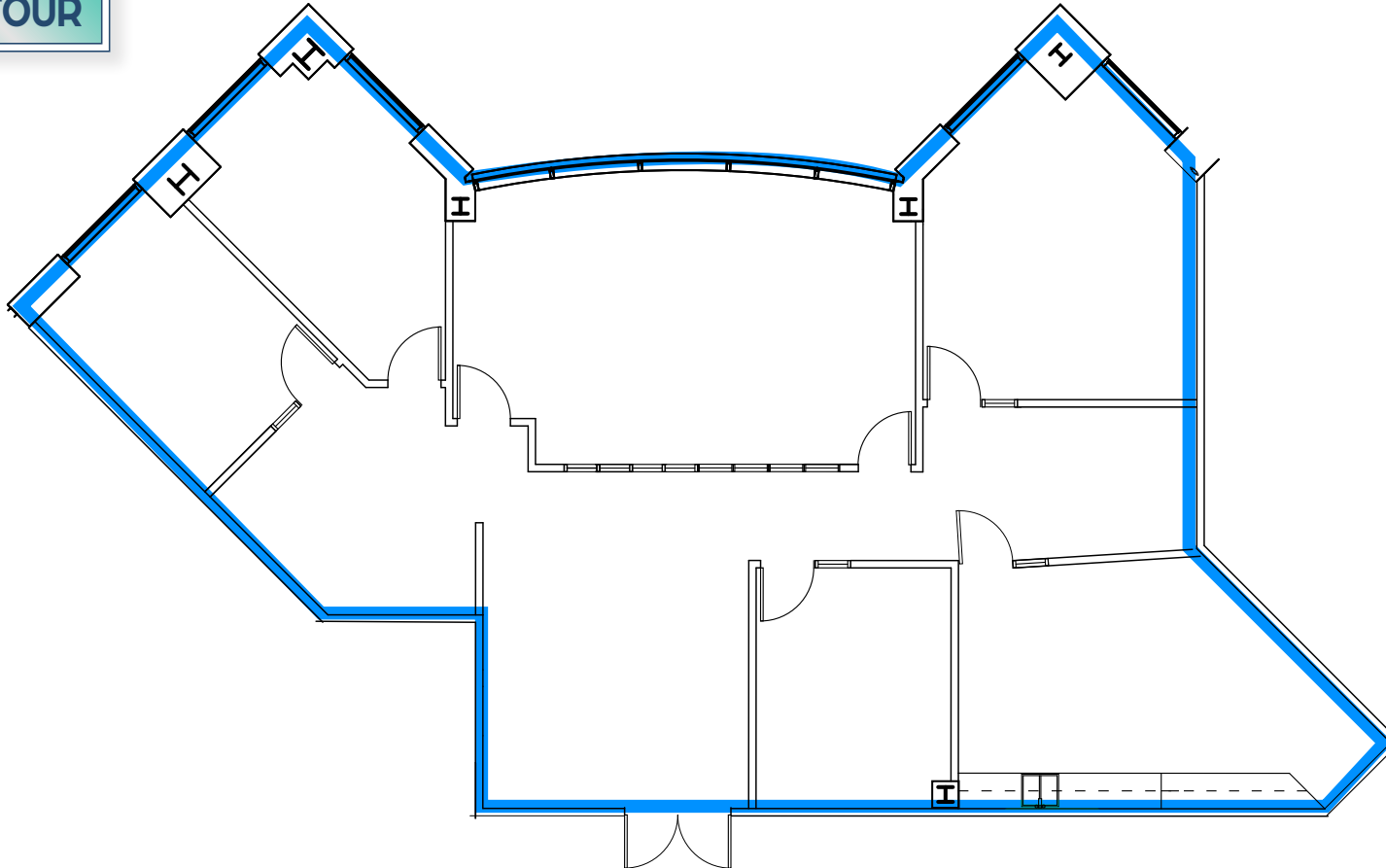


ALL MEASUREMENTS ARE APPROXIMATE

SUITE 1240 | FLOOR PLAN

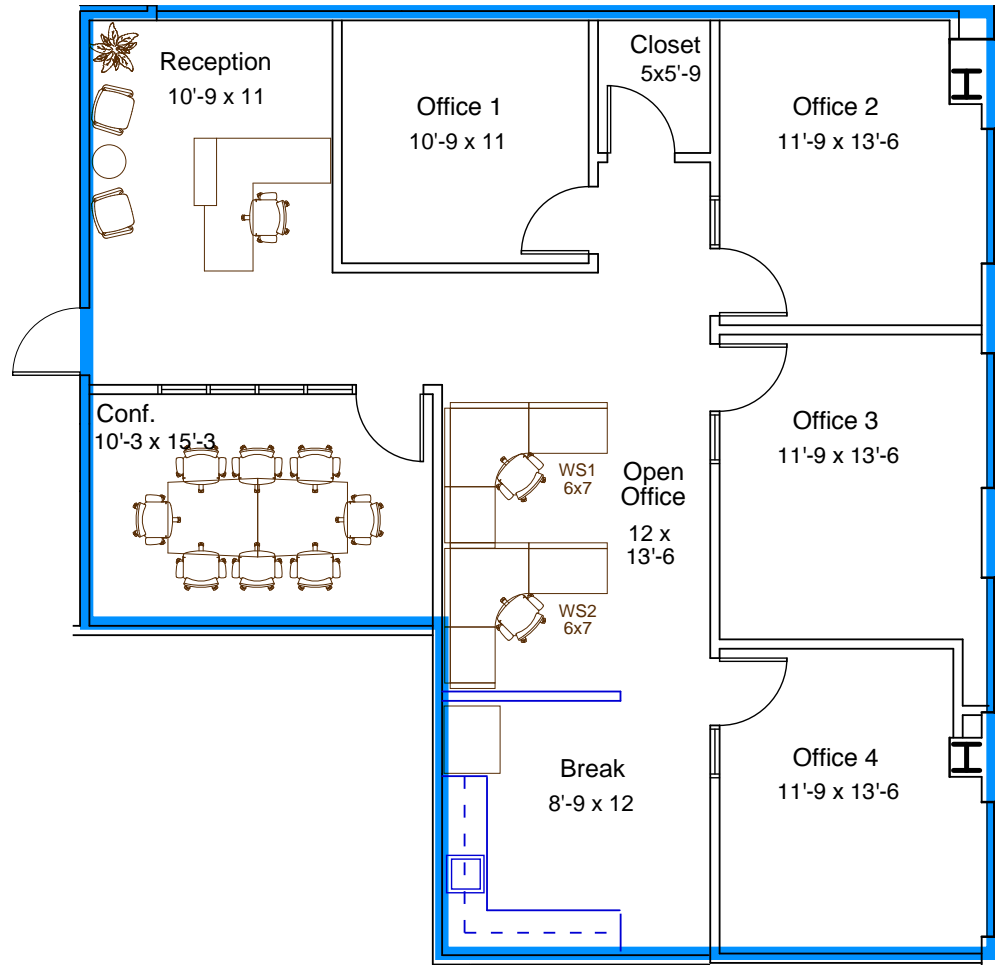
±2,664 RSF | *Move-In Ready!* | *Plug & Play with Furniture*

Click to take
VIRTUAL TOUR



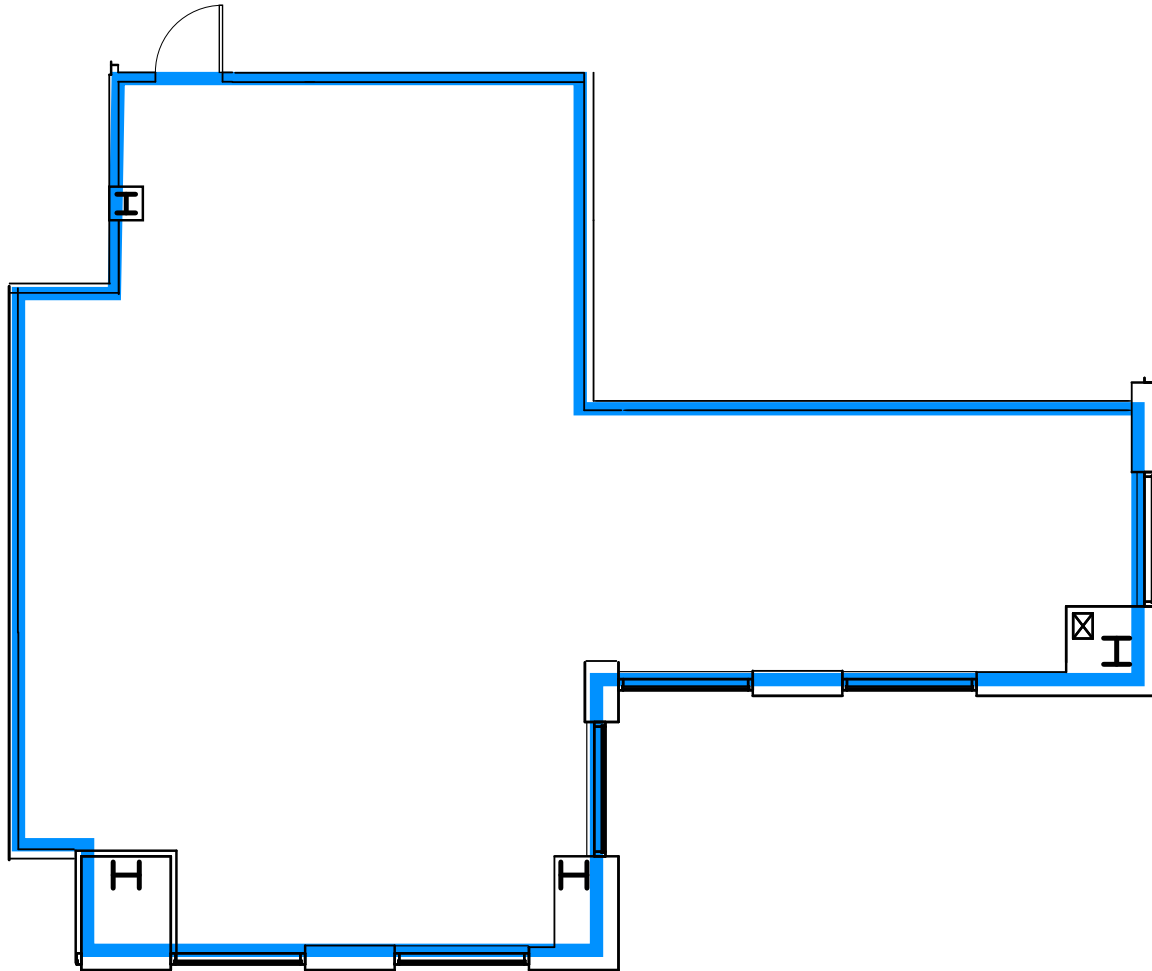
SUITE 1260 | FLOOR PLAN

±1,768–3,318 RSF | *Move-In Ready!* | *Contiguous to Suite 1280*



SUITE 1280 | FLOOR PLAN

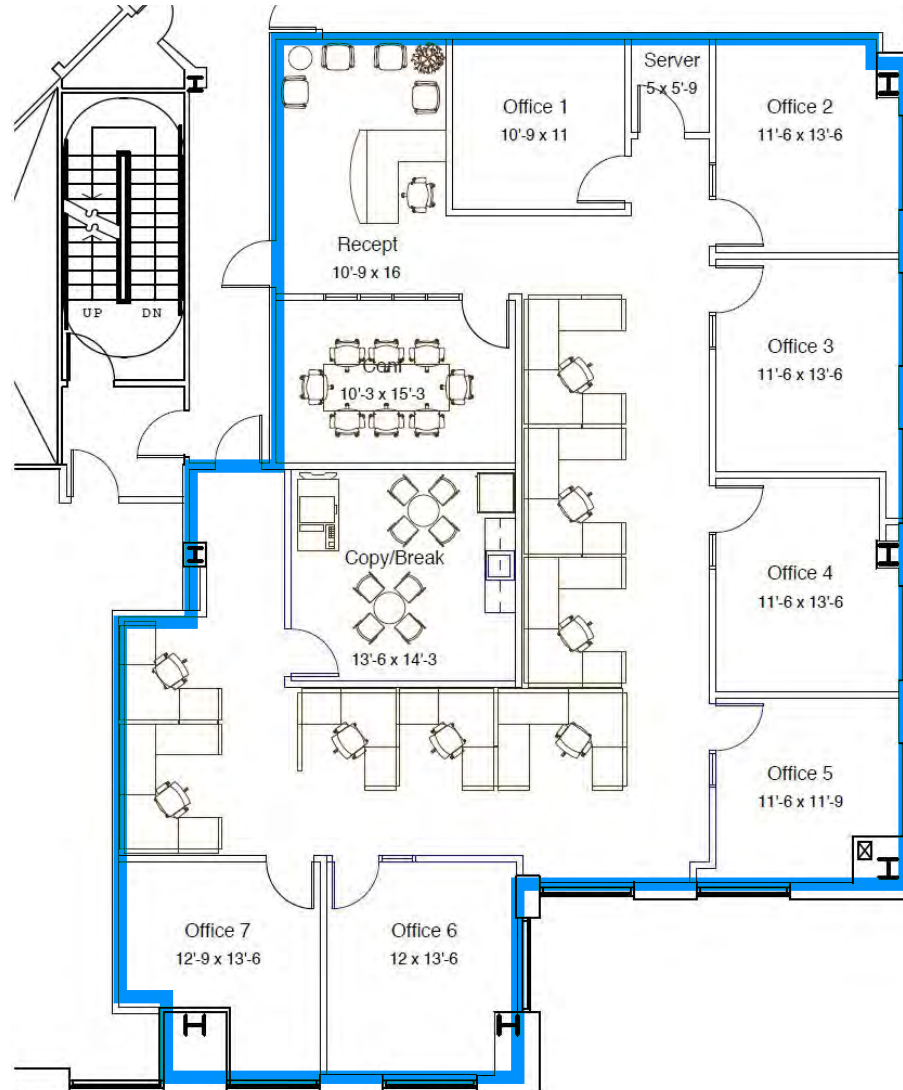
±1,550–3,318 RSF | *Contiguous to Suite 1260*



SUITES 1260/1280 | FLOOR PLAN

±3,318 RSF | *Contiguous*

Test-Fit Sample Plan



ALL MEASUREMENTS ARE APPROXIMATE

FOR LEASE | CLASS A OFFICE | DOWNTOWN SACRAMENTO

MERIDIAN PLAZA

FOR MORE INFORMATION, PLEASE CONTACT:

TONY WHITTAKER

Senior Vice President

+1 916 492 6914

Lic. 01780828

tony.whittaker@cbre.com

NELLIE CRUZ

Vice President

+1 916 492 6915

Lic. 02086140

nellie.cruz@cbre.com

CBRE

© 2025 CBRE, Inc. All rights reserved. This information has been obtained from sources believed reliable, but has not been verified for accuracy or completeness. You should conduct a careful, independent investigation of the property and verify all information. Any reliance on this information is solely at your own risk. CBRE and the CBRE logo are service marks of CBRE, Inc. All other marks displayed on this document are the property of their respective owners, and the use of such logos does not imply any affiliation with or endorsement of CBRE. Photos herein are the property of their respective owners. Use of these images without the express written consent of the owner is prohibited. PMStudio_December2025

1415 L STREET | SACRAMENTO, CA