

FOR LEASE

Owned and Operated by  **LINK**

TRENTON BUSINESS CENTER

6105 Trenton Lane North, Plymouth MN

6,490 SF



**LEASING INFO
& CONTACT**

John Ryden

Matt Oelschlager

Mike Bowen

Maxx Schindel

1 925 924 4641 / john.ryden@cbre.com

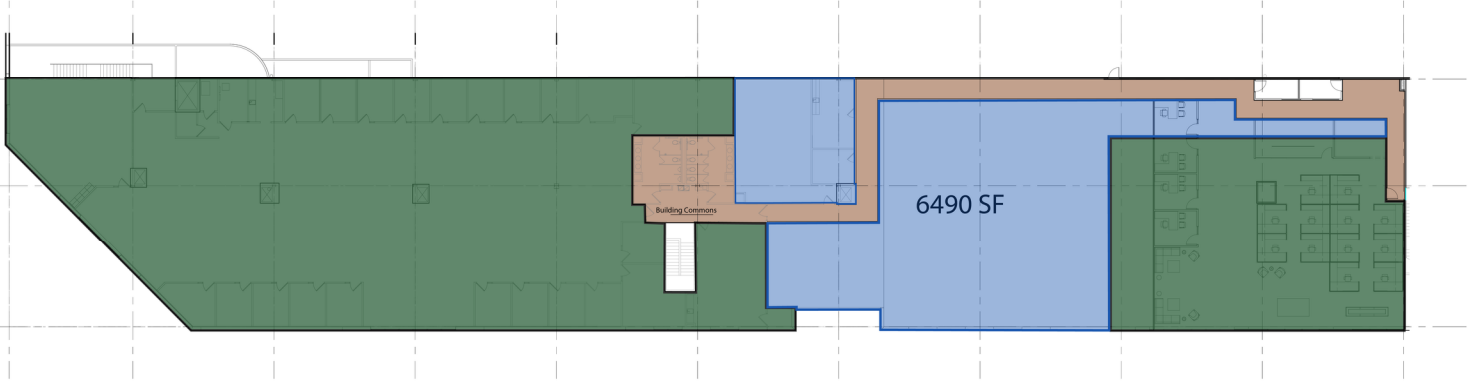
1 952 924 4848 / matt.oelschlager@cbre.com

1 952 924 4885 / mike.bowen@cbre.com

1 612 232 2901 / maxx.schindel@cbre.com

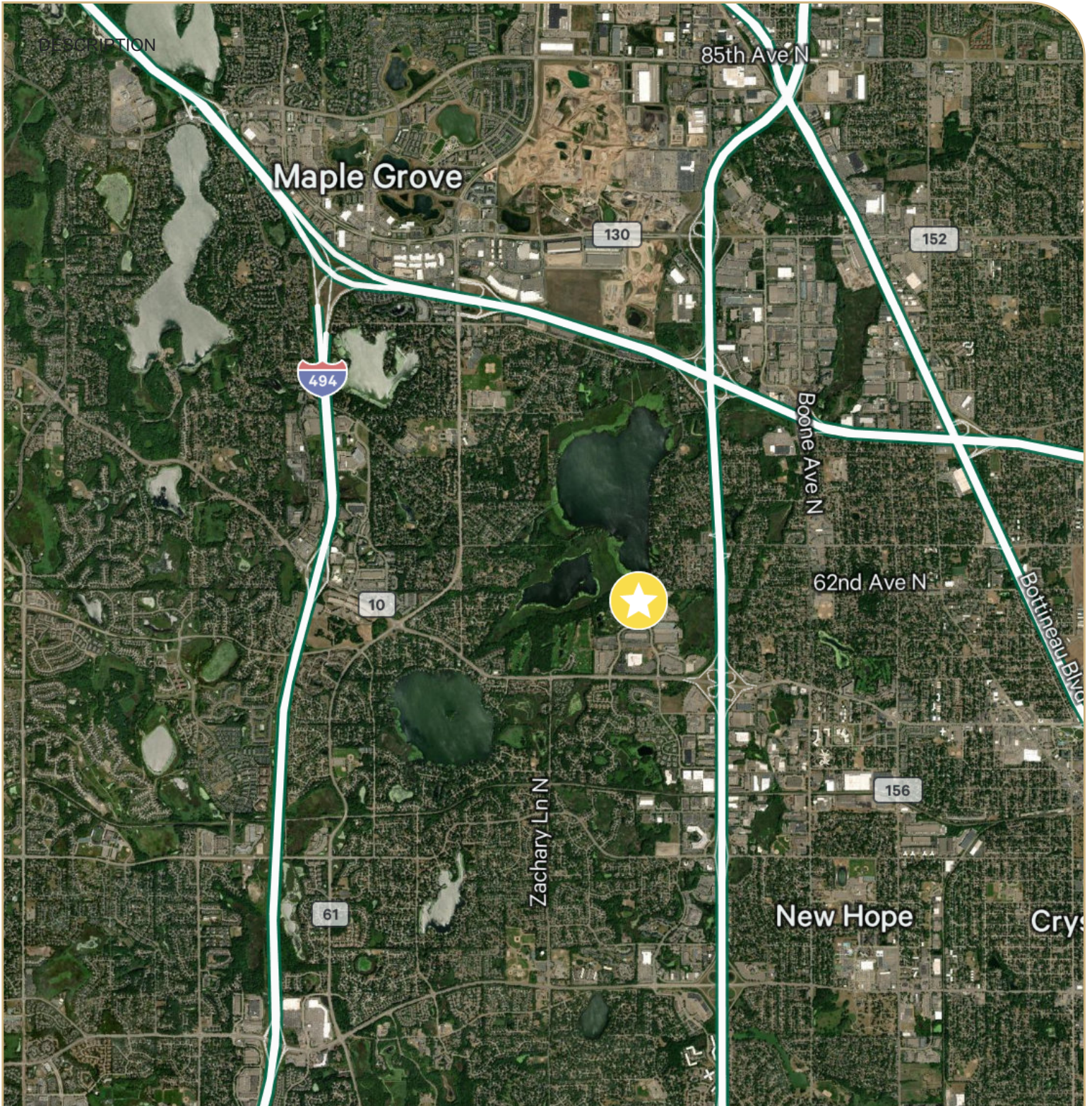
CBRE

This is not an offer or acceptance of an offer to lease space. A lease will only be offered or made in a written agreement signed by landlord. No representation or warranty of any kind is made by landlord unless set forth in a written definitive lease executed by the landlord.



PROPERTY SPECIFICATIONS

Total SF	122,032 SF	Power	TBD
Available SF	6,490 SF 2nd Floor Office	Sprinklered	ESFR
Clear Height	9'	Parking	281 (2.3/1000)
Column Spacing	40' x 40'	2023 Est. Expenses	\$5.49 PSF Total (\$3.59 PSF Taxes, \$1.90 PSF Expenses)
Lighting	TBD	Net Rental Rates	Negotiable



© 2023 CBRE, Inc. All rights reserved. This information has been obtained from sources believed reliable but has not been verified for accuracy or completeness. CBRE, Inc. makes no guarantee, representation or warranty and accepts no responsibility or liability as to the accuracy, completeness, or reliability of the information contained herein. You should conduct a careful, independent investigation of the property and verify all information. Any reliance on this information is solely at your own risk. Photos herein are the property of their respective owners. Use of these images without the express written consent of the owner is prohibited. CBRE and the CBRE logo are service marks of CBRE, Inc. All other marks displayed on this document are the property of their respective owners, and the use of such marks does not imply any affiliation with or endorsement of CBRE.