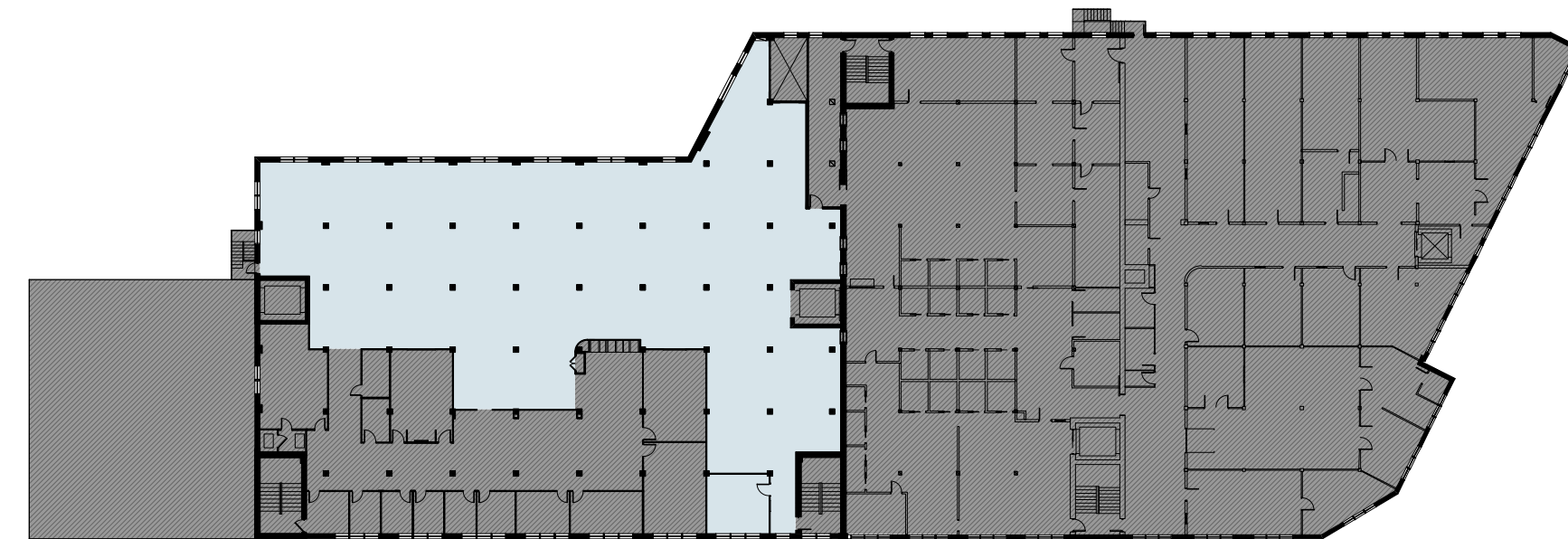
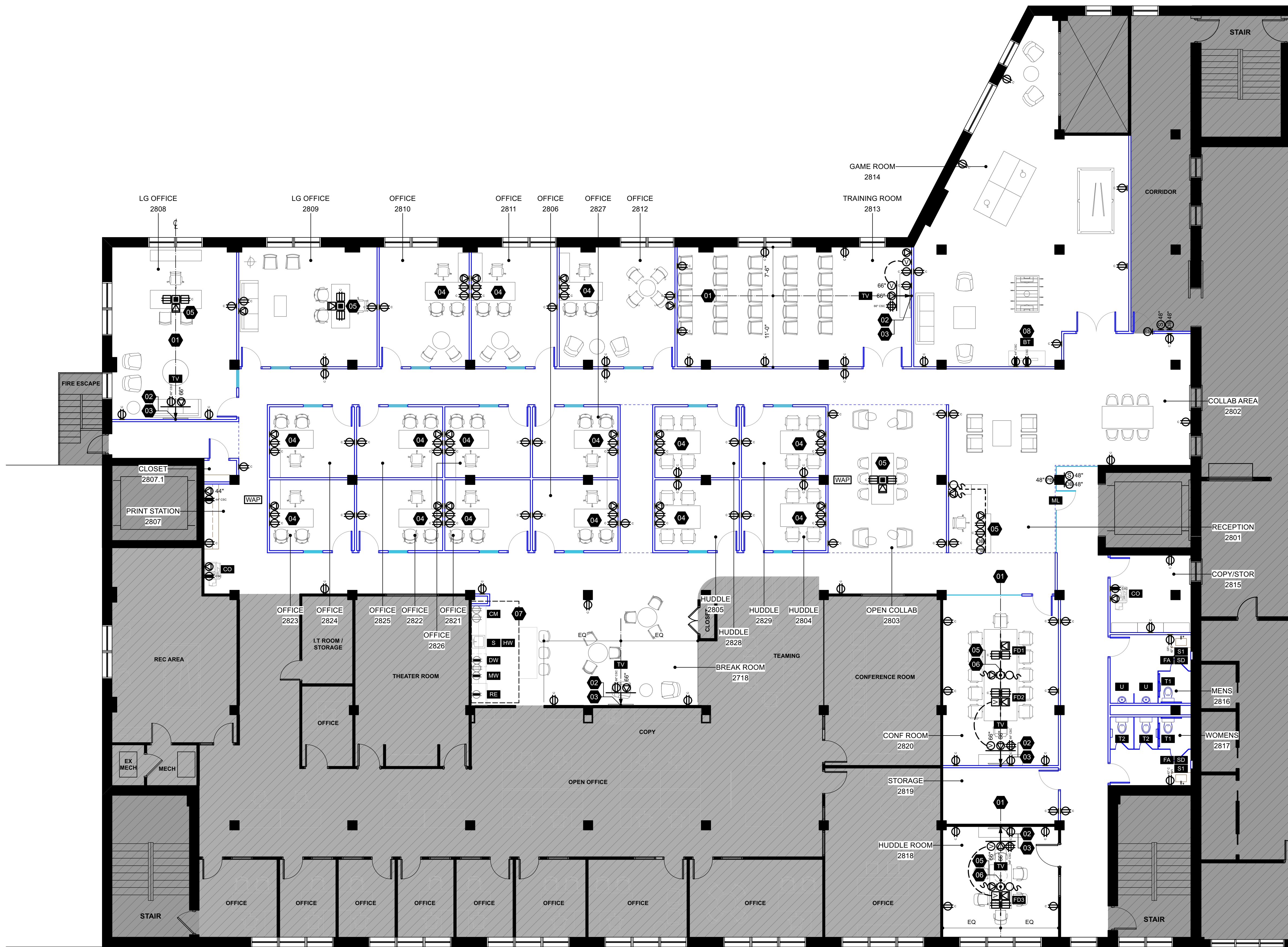


COMMAND MECHANICAL EXPANSION

2150 S Conantport Ave  
Suite 2600  
Chicago, IL

#	DATE	ISSUE
1	10.13.2022	BACKGROUNDS
2	12.30.2022	BID / PERMIT



1 OUTLET PLAN  
1/8" = 1'-0"

2 KEY SCOPE PLAN  
1" = 50'-0"

OUTLET PLAN GENERAL NOTES

- ALL CABLE TRAYS, J-HOOKS AND CABLE RUNS TO BE REVIEWED IN FIELD WITH ARCHITECT & ENGINEER PRIOR TO PULLING CABLES.
- GC TO PROVIDE AND INSTALL ALL CONDUIT, ELECTRICAL WIRING, AND LOW VOLTAGE CABLEING AT FURNITURE. ALL FURNITURE BACK-BOXES, OUTLETS, FACEPLATES, ETC. SHALL BE PROVIDED BY THE FURNITURE DEALER. HOWEVER, IT IS THE RESPONSIBILITY OF THE GENERAL CONTRACTOR TO CONTACT THE FURNITURE DEALER TO COORDINATE ANY JOB, CODE OR SCHEDULE - SPECIFIC ISSUES WHICH MIGHT AFFECT THE ORDER.
- ALL OUTLETS / COVER PLATES AT WALLS TO BE WHITE, UNLESS NOTED OTHERWISE.
- ALL OUTLETS TO BE RECESSED INTO DRYWALL PARTITIONS UNLESS OTHERWISE NOTED. SURFACE MOUNTING OF CONDUIT IS NEVER ACCEPTABLE WITHOUT AUTHORIZATION.
- ALL OUTLETS TO MEET STANDARD CONFIGURATION DESCRIBED IN OUTLET KEY UNLESS OTHERWISE NOTED.
- AT LOCATION WHERE EXPOSED DIVIDED RACEWAY IS SHOWN, RACEWAY MUST BE INSTALLED SUCH THAT RACEWAY IS FED DIRECTLY FROM JUNCTION BOX AND DIRECTLY ABUTS THE JUNCTION BOX WITHOUT USE OF INTERVENING CONDUIT OF ANY TYPE. RACEWAY TO BE INSTALLED TIGHT TO WALL CORNERS.
- CONTRACTOR TO COORDINATE OUTLET LOCATIONS WITH CLIENT FURNITURE. LOCATIONS TO BE VERIFIED BY ARCHITECT PRIOR TO DRYWALL INSTALLATION.
- EXACT LOCATION OF ALL OUTLETS TBD.
- FURNITURE INSTALLER SHALL MARK ALL OPEN OFFICE FURNITURE LOCATIONS ON THE FLOOR. GENERAL CONTRACTOR SHALL IN TURN MARK ALL FURNITURE OUTLETS ON FLOOR FOR REVIEW AND APPROVAL BY ARCHITECT AND FURNITURE INSTALLER. CONTRACTOR TO INSTALL CONDUIT AT FURNITURE LOCATIONS.
- FURNITURE SHOWN FOR REFERENCE ONLY.
- MOUNT POWER / DATA OUTLETS @ 18" AFF UNLESS NOTED OTHERWISE.
- POWER REQUIREMENTS FOR A TYPICAL WORKSTATION ARE SHOWN IN THE KEY BELOW. GC TO PROVIDE AND INSTALL ALL CONDUIT, ELECTRICAL WIRING, AND LOW VOLTAGE CABLEING AT WORKSTATIONS. CABLEING TO BE RUN BACK TO THE SERVER ROOM AND PATCHED IN AS VOICE / DATA AS APPROPRIATE.
- AT ALL MEETING ROOMS & OFFICES WITH LIGHT SWITCHES, DDC THERMOSTATS & FIRE STROBES, ALL 3 DEVICES SHOULD BE CENTERED AND STACKED AT 48", 60" AND 96" AFF RESPECTIVELY. GC TO REVIEW ALL LOCATIONS IN FIELD WITH ARCHITECT PRIOR TO CLOSING UP WALLS. ANY 1-STATS WITH USER CONTROL SHOULD BE MOUNTED WITHIN ADA REACH. ANY STROBES CONFLICTING WITH CEILING HEIGHT SHOULD BE CEILING MOUNTED IN LIEU OF WALL MOUNTED.
- GC AND SUBCONTRACTOR SHALL BE RESPONSIBLE FOR REFERENCING BOTH ARCHITECTURAL OUTLET PLAN AND ENGINEER'S OUTLET & ELECTRICAL PLANS DURING BID PRICING PROCESS. ANY DISCREPANCIES SHOULD BE ADDRESSED AS AN RFI BEFORE PROCEEDING WITH ROUGH-IN. GC IS RESPONSIBLE FOR SHARING BOTH ENGINEERING AND ARCHITECTURAL SHEETS WITH SUBCONTRACTORS.
- WIRELESS ACCESS POINTS FOR COORDINATION PURPOSES ONLY; GC TO PROVIDE EMPTY CONDUIT TO RECEIVE 1 DATA CABLE; LOCATIONS TO BE FIELD VERIFIED WITH TENANT.

INSTRUCTIONAL SYMBOLS

- EXISTING RECEPTACLE TO REMAIN
- NEW RECEPTACLE, MOUNTED HORIZONTALLY U.O.N.
- CONTROLLED RECEPTACLE
- CONTROLLED SPLIT CIRCUIT RECEPTACLE
- RECEPTACLE @ SPECIFIED HEIGHT
- EXISTING DATA CONFIGURATION
- TYPICAL DATA CONFIGURATION [2CATS], MOUNTED HORIZONTALLY U.O.N.
- SPECIAL DATA CONFIGURATION
- FULLY RECESSED, TRIMLESS FIRE HOSE AND EXTINGUISHER CABINET
- FULLY RECESSED, TRIMLESS FIRE EXTINGUISHER CABINET
- SURFACE MOUNT FIRE EXTINGUISHER CABINET

RECEPTACLE SYMBOLS

- DATA OUTLET @ FURNITURE
- DATA RECEPTACLE
- DATA WHIP
- DEDICATED DUPLEX POWER W/ CONTROLLED SPLIT CIRCUIT
- DOOR BELL
- DUPLEX POWER @ FURNITURE
- DUPLEX POWER @ FURNITURE W/ CONTROLLED CIRCUIT
- DUPLEX POWER @ FURNITURE W/ CONTROLLED SPLIT CIRCUIT
- DUPLEX POWER OUTLET
- DUPLEX POWER OUTLET W/ CONTROLLED CIRCUIT
- DUPLEX POWER OUTLET W/ CONTROLLED SPLIT CIRCUIT
- ELECTRIC STRIKE
- FLOOR CORE - FLUSH OUTLET
- FLOOR CORE - W/ STUB UP
- GFI DUPLEX POWER OUTLET W/ CONTROLLED SPLIT CIRCUIT
- JUNCTION BOX
- POWER WHIP
- PUSH BUTTON RELEASE
- QUAD POWER OUTLET W/ CONTROLLED CIRCUIT
- QUAD POWER OUTLET W/ CONTROLLED SPLIT CIRCUIT
- SECURITY CARD W/ITAG
- VIDEO RECEPTACLE
- VIDEO RECEPTACLE @ FURNITURE
- WIRELESS ACCESS POINT

EQUIPMENT SYMBOLS

- BEER TAP (BY TENANT)
- COPIER (BY TENANT)
- EXISTING COFFEE MAKER
- EXISTING DISHWASHER
- EXISTING HOT WATER HEATER
- EXISTING KITCHEN SINK
- EXISTING MICROWAVE
- EXISTING REFRIGERATOR
- FURNITURE DEVICE BY OTHERS (HARDWIRED BY GC)
- MAGNETIC LOCK
- RESTROOM FAUCET (BY GC)
- RESTROOM SINK (BY GC)
- SOAP DISPENSER (BY GC)
- TELEVISION (BY TENANT)
- TOILET (BY GC)
- URINAL (BY GC)

OUTLET PLAN KEYNOTES

- CENTERLINE OF ROOM; ALIGN ALL FURNITURE, OUTLETS, AV, CEILING, AND LIGHTING TO THIS LINE. REFER TO A101
- COORDINATE REQUIREMENTS AND LOCATIONS OF DEVICES WITH AV DOCUMENTS. COORDINATE FINAL RECESSED IN-WALL ACCESSORY BOX/OUTLET LOCATIONS AND MOUNTING HEIGHTS FOR NEW TV WITH AUDIO-VISUAL DOCUMENTS
- WALL MOUNTED MONITOR. COORDINATE FINAL LOCATION WITH TENANT. VERIFY POWER REQUIREMENTS WITH MANUFACTURER'S SPECIFICATIONS
- COORDINATE FINAL WALL OUTLET LOCATIONS WITH FURNITURE VENDOR
- COORDINATE FINAL CORE DRILL LOCATIONS WITH FURNITURE VENDOR
- POWER/DATA TO BE ACCESSIBLE AT TABLETOP. COORDINATE WITH FURNITURE VENDOR. DEVICE PROVIDED BY VENDOR, ELECTRICAL AND DATA CONNECTION BY G.C.
- EXISTING BREAK APPLIANCES AND POWER TO REMAIN
- VERIFY POWER REQUIREMENTS WITH MANUFACTURER SPECS

NOT IN SCOPE