

# Bowers & Associates

COMMERCIAL & INDUSTRIAL REAL ESTATE

---

2630 E. LAMAR BLVD. SUITE 107  
ARLINGTON, TEXAS 76011  
jb@rebowers.com

## Alvarado Industrial 801 Cty Rd 209 Johnson County

Description	A 163 AC tract of land, located ½ mile south of Hwy 67 on Cty Rd 209, 5 minutes to Venus, 5 minutes to Alvarado. Owner desires to sell tracts in 10-20-30 acre parcels.
Utilities	No sewer, septic possible, water availability depends on use.
Prices	\$1.50/sf - \$2.50/sf range Priced per tract.
Features	County development standards, call Broker for detailed info.

Exclusive  
Bowers & Associates  
Call Joe Bowers

OFFICE: 817-633-5517 • CELL: 214-505-4386

*The information contained herein was obtained from sources believed reliable; however Bowers & Associates makes no guarantees, warranties or representations as to the completeness or accuracy thereof. The presentation of this property for sale, rent or exchange is submitted subject to errors, omissions, change of price of conditions or withdrawal without notice.*



# Untitled Map

Write a description for your map.

# Legend





ALVARADO ETJ

163 ACRE INDUSTRIAL TRACT

CTY RD 213

CTY RD 109

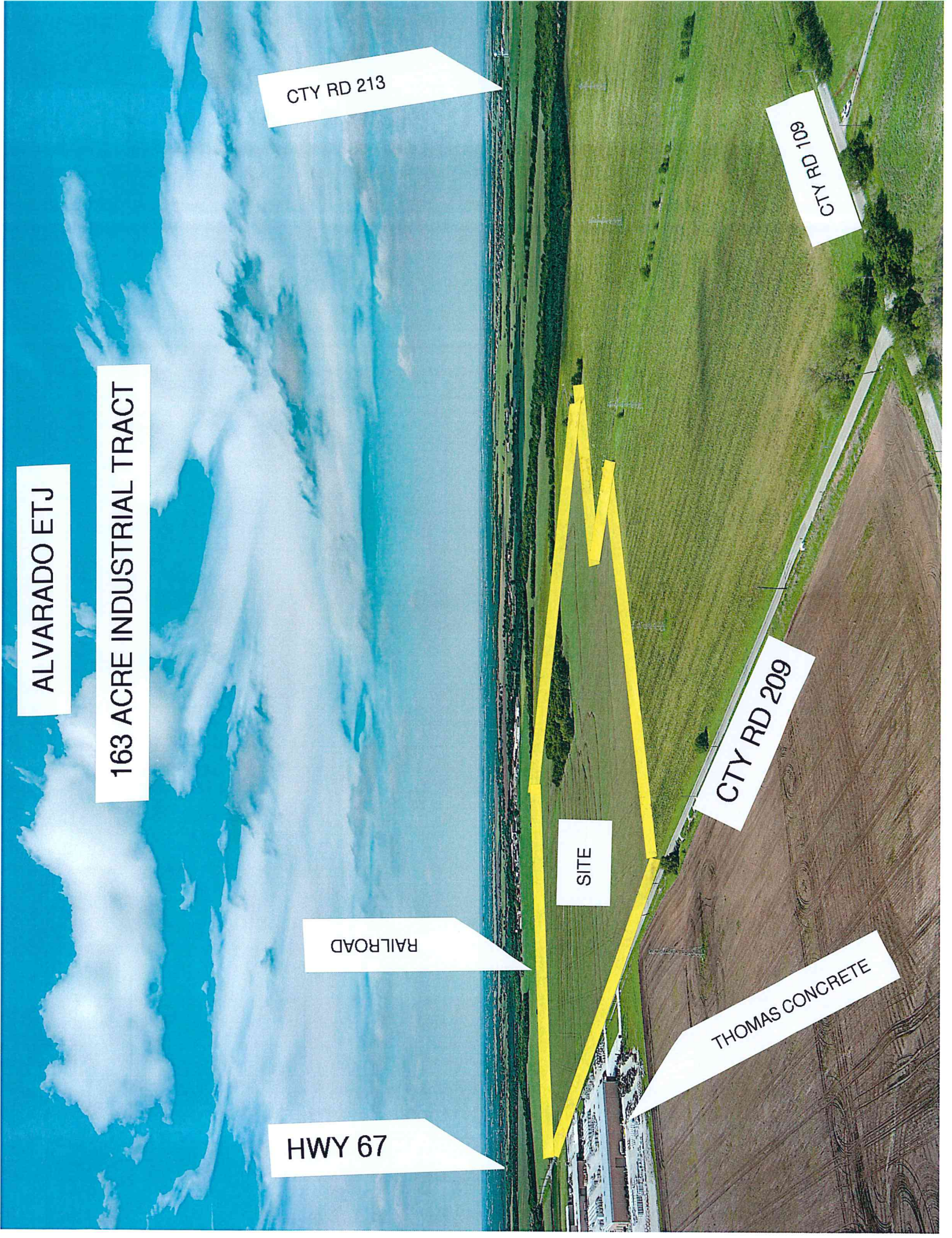
CTY RD 209

SITE

RAILROAD

THOMAS CONCRETE

HWY 67

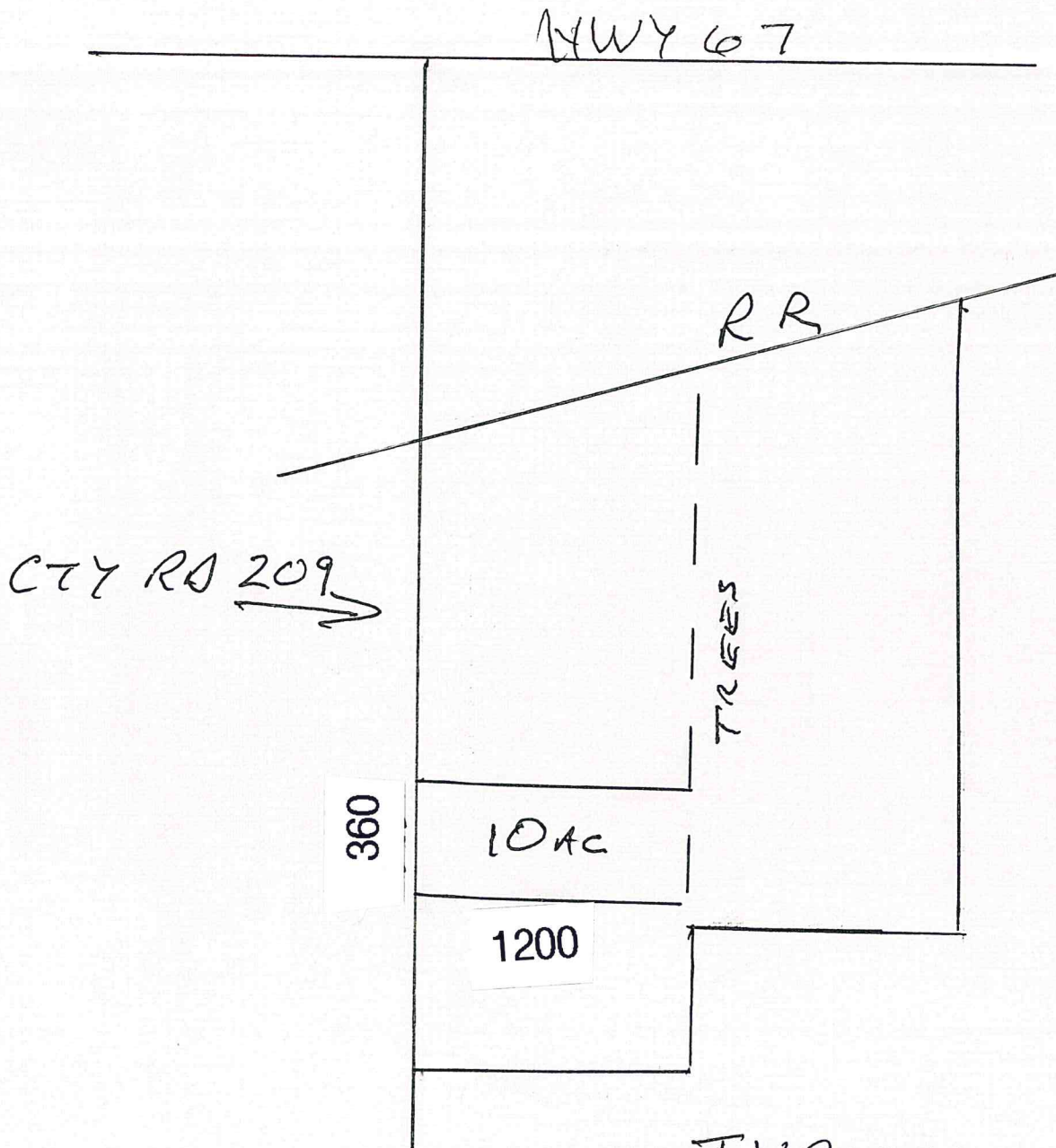




# Bowers & Associates

COMMERCIAL & INDUSTRIAL REAL ESTATE

2630 E. LAMAR BLVD. SUITE 107  
ARLINGTON, TEXAS 76011  
jb@rebowers.com



TYPICAL  
10Ac  
TRACT

OFFICE: 817-633-5517 • CELL: 214-505-4386

The information contained herein was obtained from sources believed reliable; however Bowers & Associates makes no guarantees, warranties or representations as to the completeness or accuracy thereof. The presentation of this property for sale, rent or exchange is submitted subject to errors, omissions, change of price of conditions or withdrawal without notice.