

FOR LEASE

WEISS BUILDING

PRIME WAREHOUSE AND MANUFACTURING SPACE

19405 68th Dr NE, Arlington, WA 98223

REDUCED RATES!

PLUS

5 MONTHS FREE RENT
ON 5-YEAR LEASE

3 MONTHS FREE RENT
ON 3-YEAR LEASE



FOR MORE
INFORMATION
CONTACT:

JON BOCKMAN

📞 425-417-5391
✉ jbockman@rainiercp.com

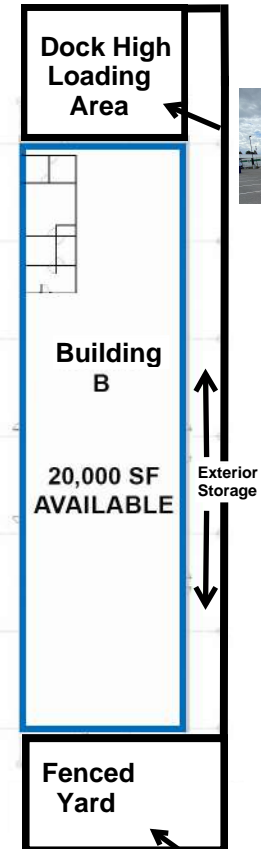
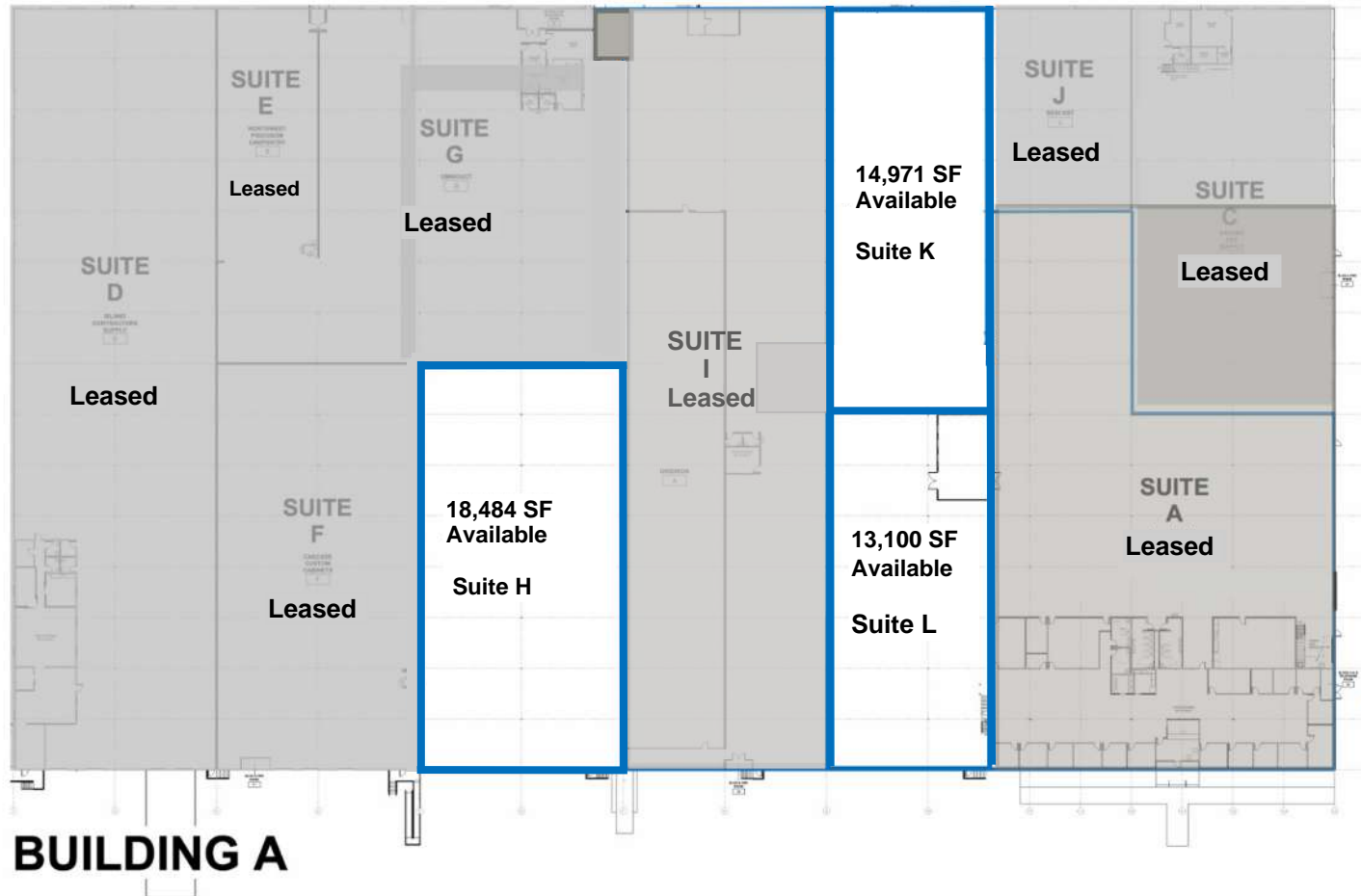
LANE BOCKMAN

📞 206-999-7016
✉ Lane@rainiercp.com

SITE PLAN

WEISS BUILDING

19405 68TH DR NE, ARLINGTON, WA 98223



FOR MORE
INFORMATION
CONTACT:

JON BOCKMAN
☎ 425-417-5391
✉ jbockman@rainiercp.com

LANE BOCKMAN
☎ 206-999-7016
✉ Lane@rainiercp.com

AVAILABLE SPACES

WEISS BUILDING

19405 68TH DR NE, ARLINGTON, WA 98223

- Suite H approximately **18,484 SF** - Rate \$0.78 PSF plus NNN
- Suite K approximately **14,971 SF** -Rate \$0.78 PSF plus NNN
- Suite L approximately **13,100 SF** -Rate \$0.78 PSF plus NNN
- Combine suites K+L approximately **28,071 SF** rate \$0.78 PSF
- Building B approximately **20,000 SF** with **1,634 SF** of office.
\$0.78 warehouse/**\$2.00 Office + NNN** Fenced yard and dock high loading.
- **NNN/\$0.18 PSF**



FOR MORE
INFORMATION
CONTACT:

JON BOCKMAN

☎ 425-417-5391

✉ jbockman@rainiercp.com

LANE BOCKMAN

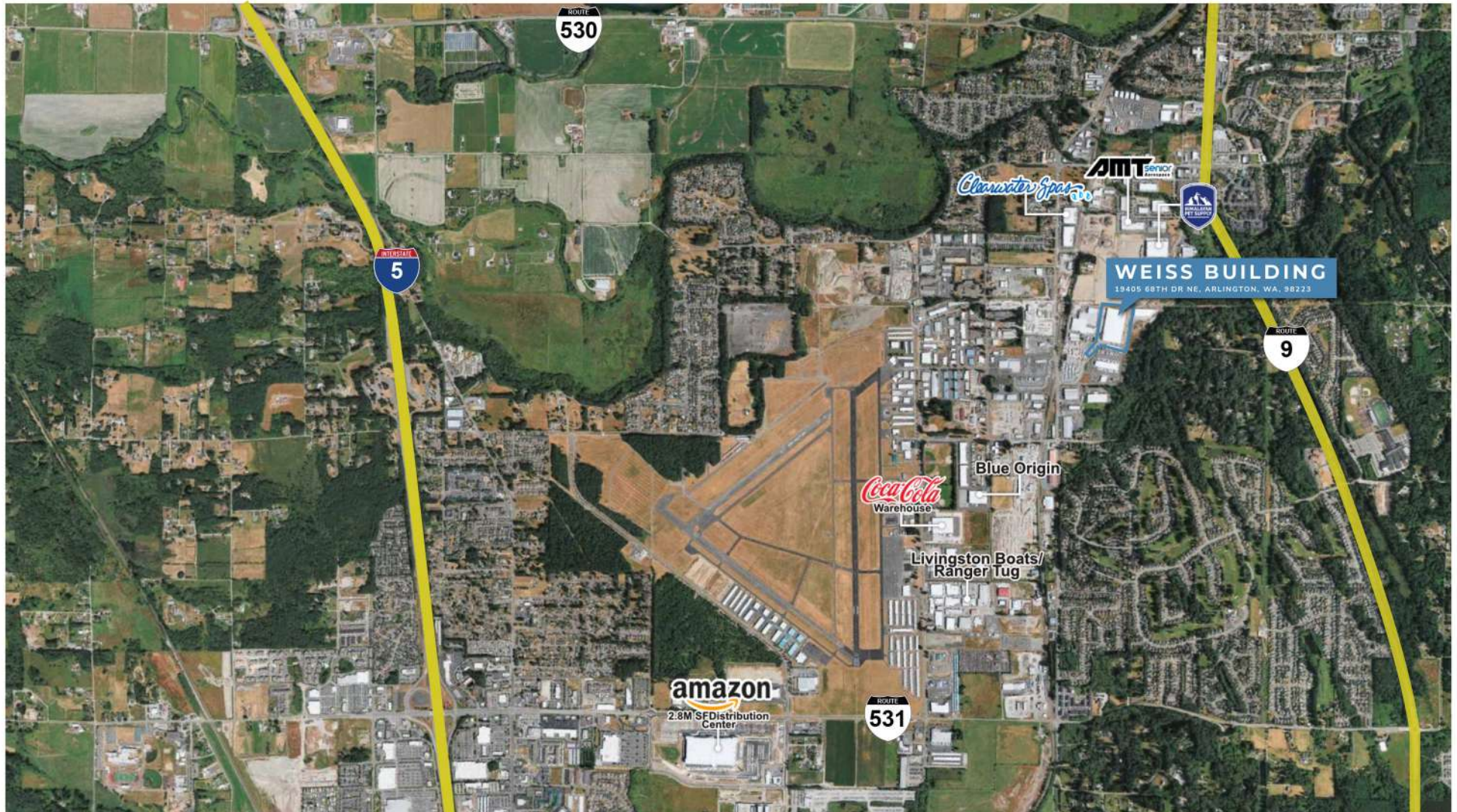
☎ 206-999-7016

✉ Lane@rainiercp.com

SITE PLAN

WEISS BUILDING

19405 68TH DR NE, ARLINGTON, WA 98223



FOR MORE
INFORMATION
CONTACT:

JON BOCKMAN

📞 425-417-5391

✉ jbockman@rainiercp.com

LANE BOCKMAN

📞 206-999-7016

✉ Lane@rainiercp.com

FOR MORE INFORMATION CONTACT:

JON BOCKMAN

☎ 425-417-5391

✉ jbockman@rainiercp.com

LANE BOCKMAN

☎ 206-999-7016

✉ Lane@rainiercp.com



RAINIER

C O M M E R C I A L
P A R T N E R S

All information provided herein is deemed reliable but is not guaranteed and is subject to change without notice. Prospective buyers are solely responsible for verifying all information, including but not limited to square footage, zoning, permitted uses, and financial performance. No representation or warranty, express or implied, is made as to the accuracy or completeness of the information contained herein. Buyers are encouraged to conduct their own independent due diligence.