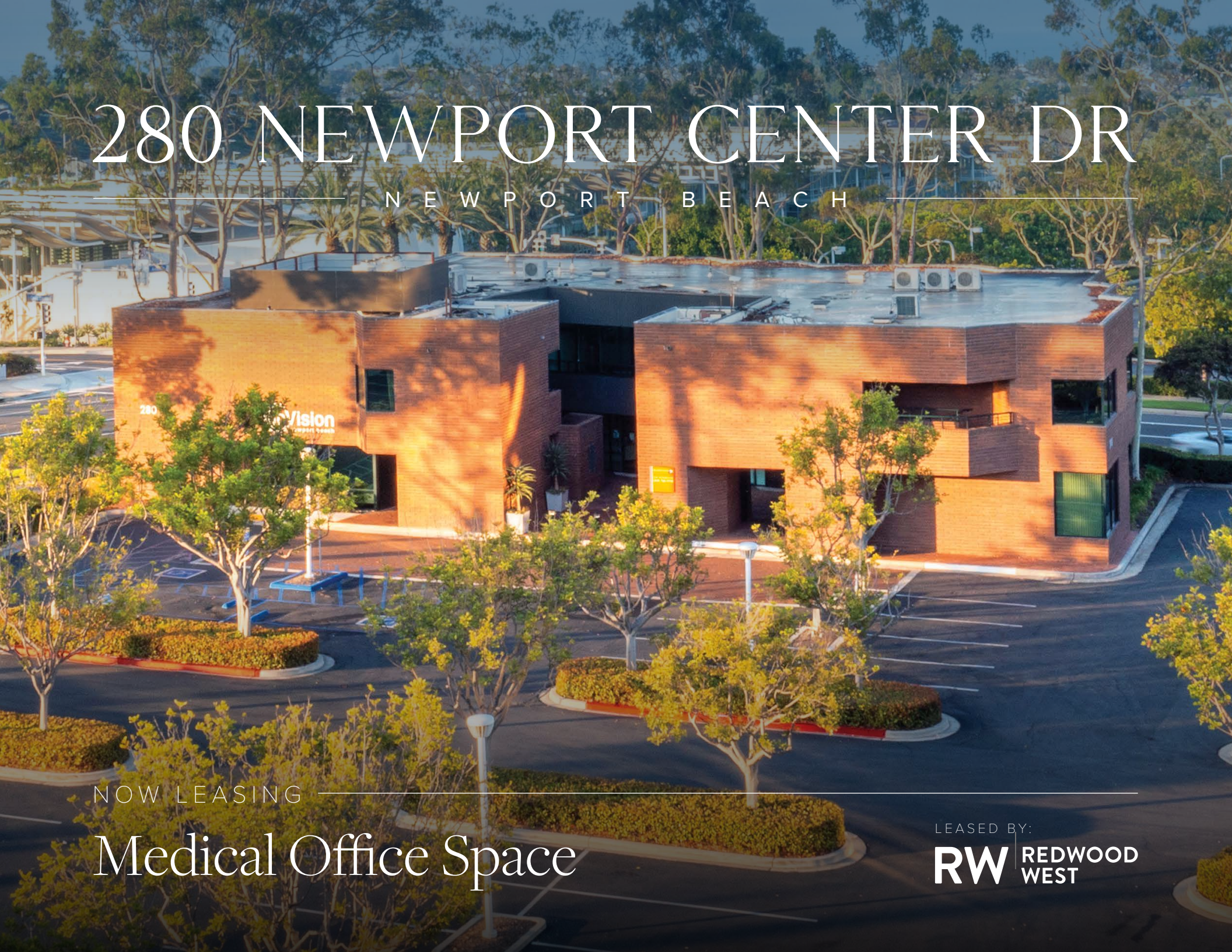


# 280 NEWPORT CENTER DR

NEWPORT BEACH



NOW LEASING

## Medical Office Space

LEASED BY:

**RW** REDWOOD  
WEST



WELCOME TO

# 280 NEWPORT CENTER DRIVE

280 Newport Center Drive is a professional and medical office building in the heart of Newport Center - Newport Beach's premiere business, shopping and entertainment district. Situated across the street from Fashion Island Mall and Newport Beach City Hall, 280 Newport Center Drive draws a strong daytime population of business professionals, medical physicians, international tourists and affluent homeowners.







JOEY NEWPORT BEACH



# The *Features* & Amenities



## FEATURED LOCATION **JOEY RESTAURANTS**

In the heart of Orange County's luxury shopping destination, Fashion Island, JOEY Newport Beach is an opulent oasis. The space features a gallery wall highlighting several hand-picked local artists and a unique Bocci light installation. Boasting 9,367 square feet, it includes an open patio which features a bar and retractable sections of roof, providing coverage and the ability to open to the day or evening sky. A large-scale outdoor fire pit offers guests an inviting lounge area, this space is the perfect place to enjoy a glass of well-deserved champagne fireside after a day of shopping.

- Prestigious Newport Beach Address
- Ample and convenient surface parking
- Convenient access to the 55 & 73 freeways and PCH
- Walking distance to Fashion Island dining, shopping, & entertainment
- Situated on a High-identity corner with prominent signage opportunities
- Low-rise setting with multiple entry points



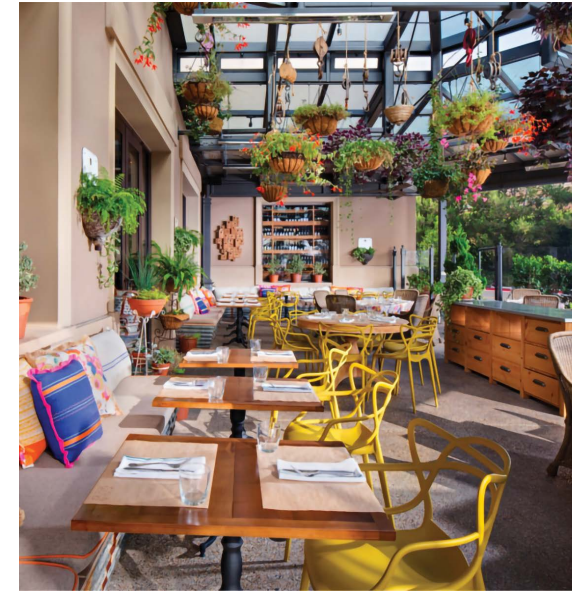
NEIGHBORHOOD HOT SPOTS



JOEY NEWPORT BEACH



GULFSTREAM



CUCINA ENOTECA



RED O



NEWPORT BACK BAY

NEWPORT BEACH COUNTRY CLUB

FASHION ISLAND SHOPPING CENTER

BIG CANYON COUNTRY CLUB

280 NEWPORT CENTER DR

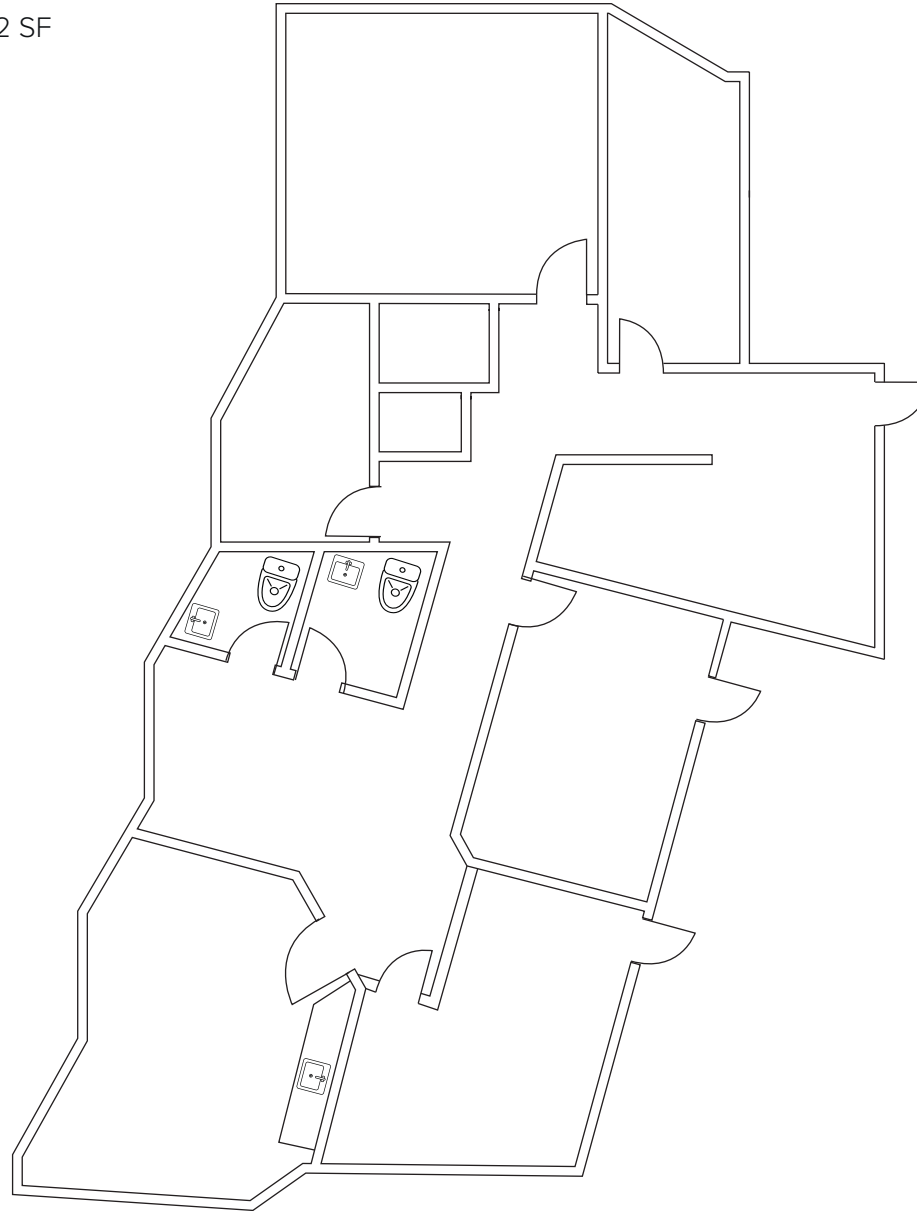
BALBOA ISLAND

NEWPORT BEACH CIVIC CENTER



# Suite 100

+/- 2842 SF

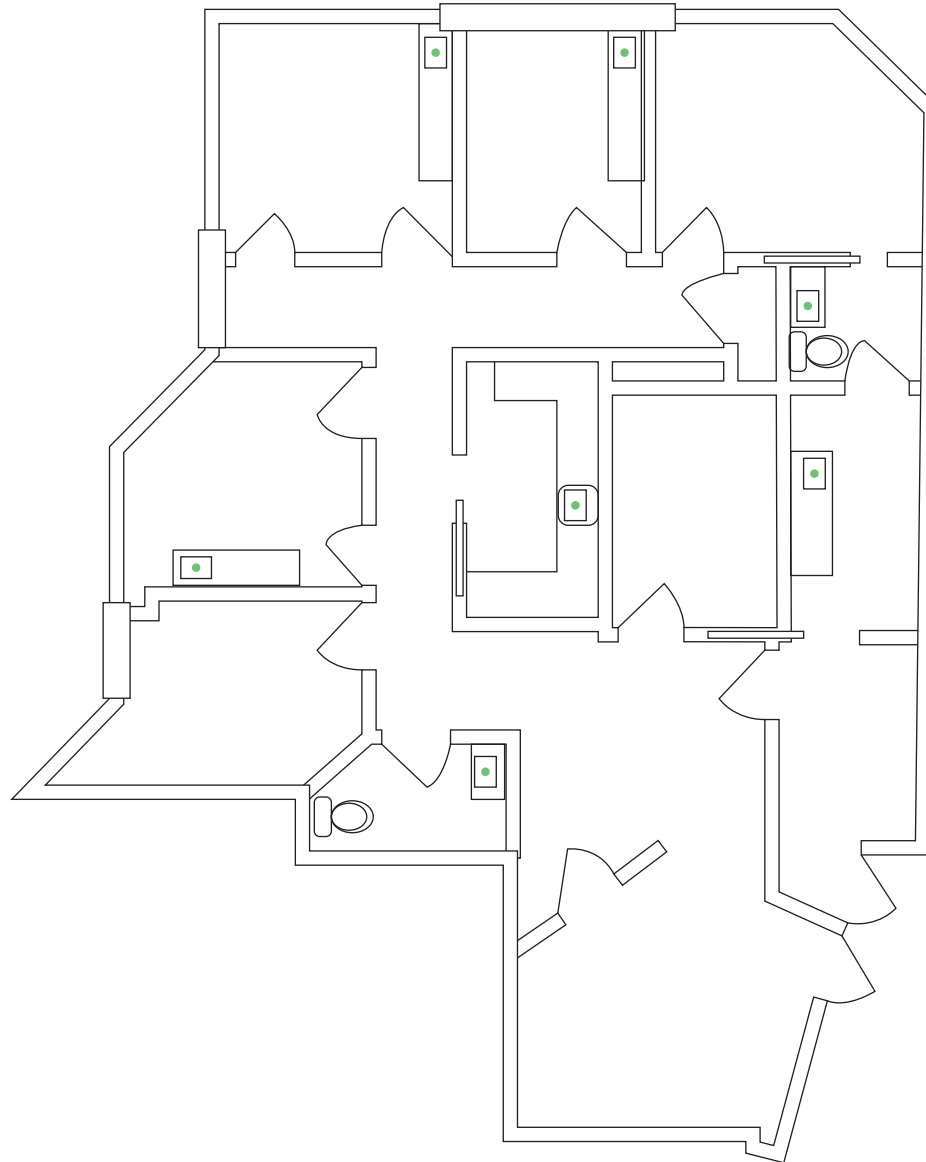


# Suite 230

+/- 1,632 SF

**BUILT-OUT DENTAL SPACE  
AVAILABLE NOW**

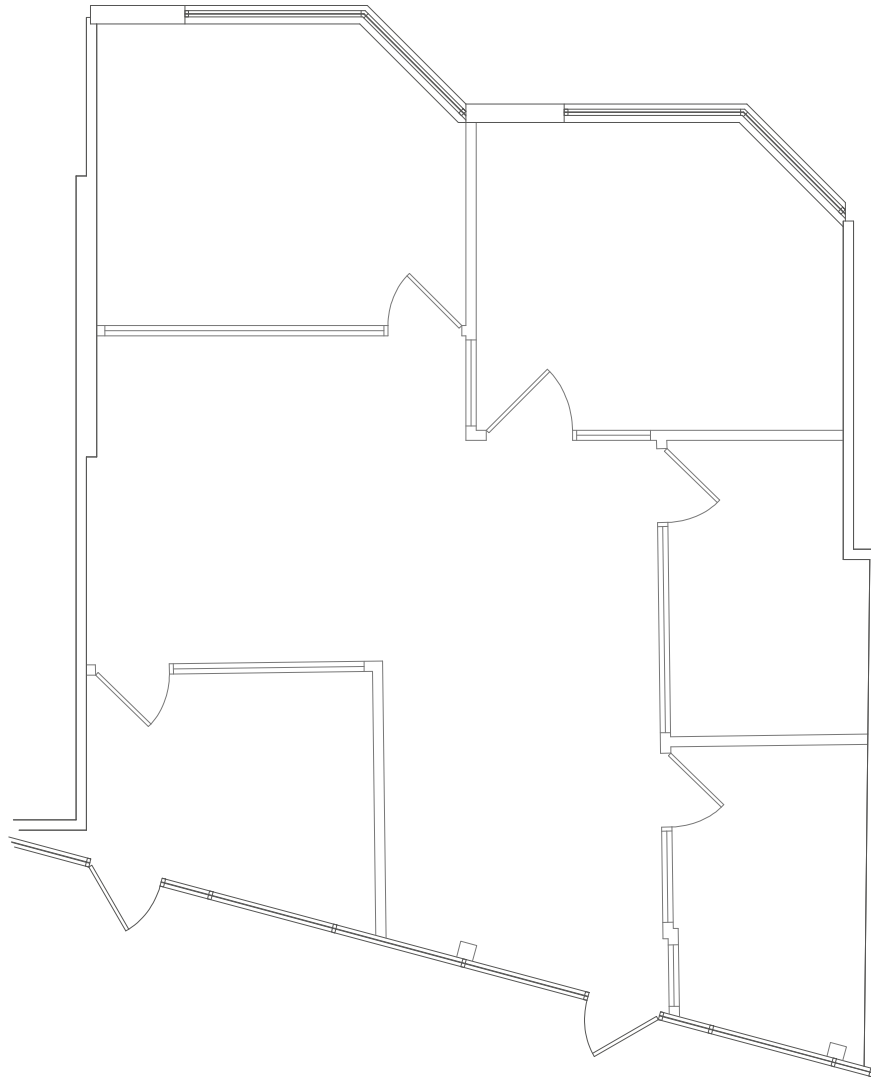
OCEAN AND CATALINA VIEWS



# Suite 235

+/- 1,391 SF

OCEAN AND CATALINA VIEWS





# 280 NEWPORT CENTER DR

NEWPORT BEACH

*For more information, please contact:*

**John Pomer**

949.945.2649  
john@redwoodwest.com  
Lic. #01440689

**Ben Gott**

949.945.2648  
ben@redwoodwest.com  
Lic. #01724507

**Christian Heffelman**

949.945.2645  
christian@redwoodwest.com  
Lic. #02101426

**Julie Johnson**

949.945.2644  
julie@redwoodwest.com  
Lic. #02156626

LEASED BY:

**RW** | REDWOOD  
WEST

The information contained in this document has been obtained from sources believed reliable. While Redwood West does not doubt its accuracy, Redwood West has not verified it and makes no guarantee, warranty or representation about it. It is your responsibility to independently confirm its accuracy and completeness. You and your advisors should conduct a careful, independent investigation of the property to determine your satisfaction to the suitability of the property for your needs.