



FOR LEASE

---

# 116 NATOMA STREET

---

FULL FLOOR PENTHOUSE SUITE



[WWW.TCPRE.COM](http://WWW.TCPRE.COM)

**ZACH HAUPERT** [zhaupert@tcpre.com](mailto:zhaupert@tcpre.com)  
D 415.539.1121 | C 415.812.1219

**MICHAEL SANBERG** [msanberg@tcpre.com](mailto:msanberg@tcpre.com)  
D 415.539.1103 | C 415.697.6088

**TREVOR GUDIM** [trevor@tcpre.com](mailto:trevor@tcpre.com)  
D 415.539.1122 | C 858.922.2632



# 116 NATOMA STREET

## PROPERTY SUMMARY

### ADDRESS

116 Natoma Street, 3rd Floor, San Francisco, CA 94105

### AVAILABLE SPACE

+/- 5,279 Square Feet

### RENTAL RATE

\$36 / Square Foot / Year, Industrial Gross

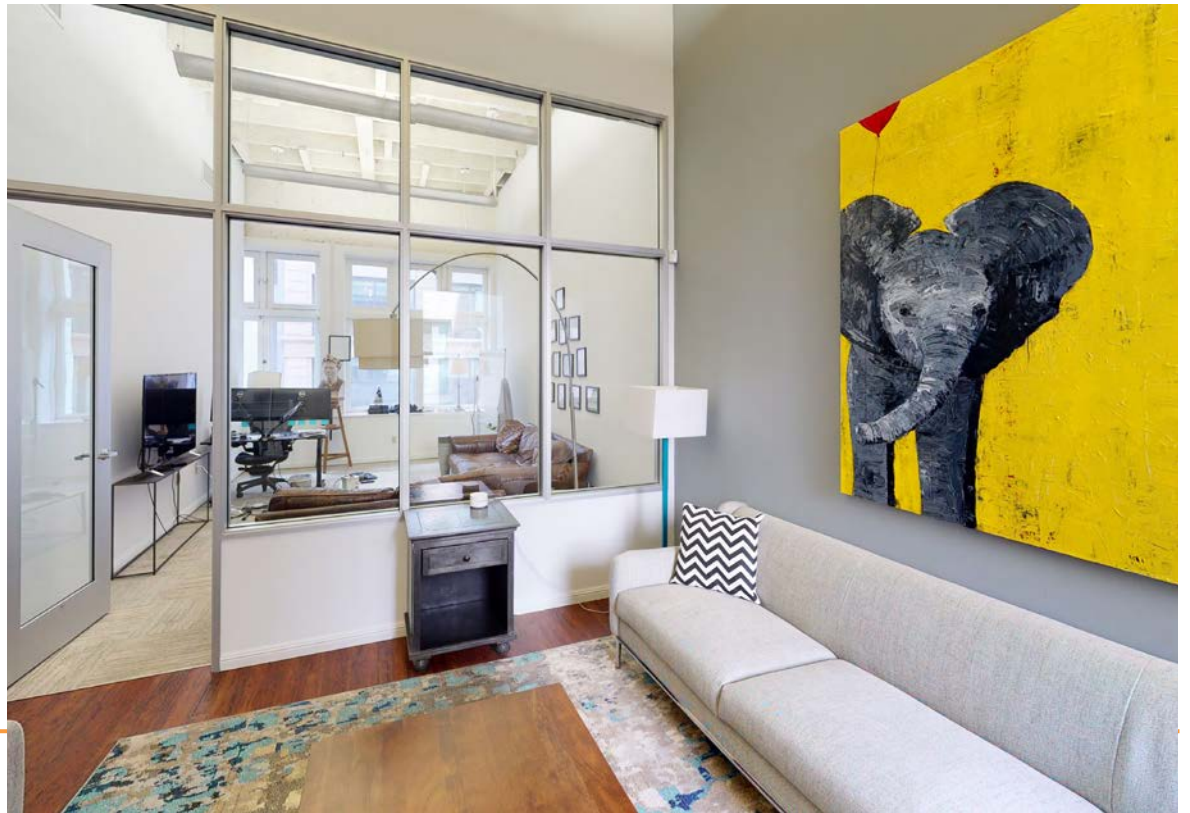
### AVAILABLE

Immediately



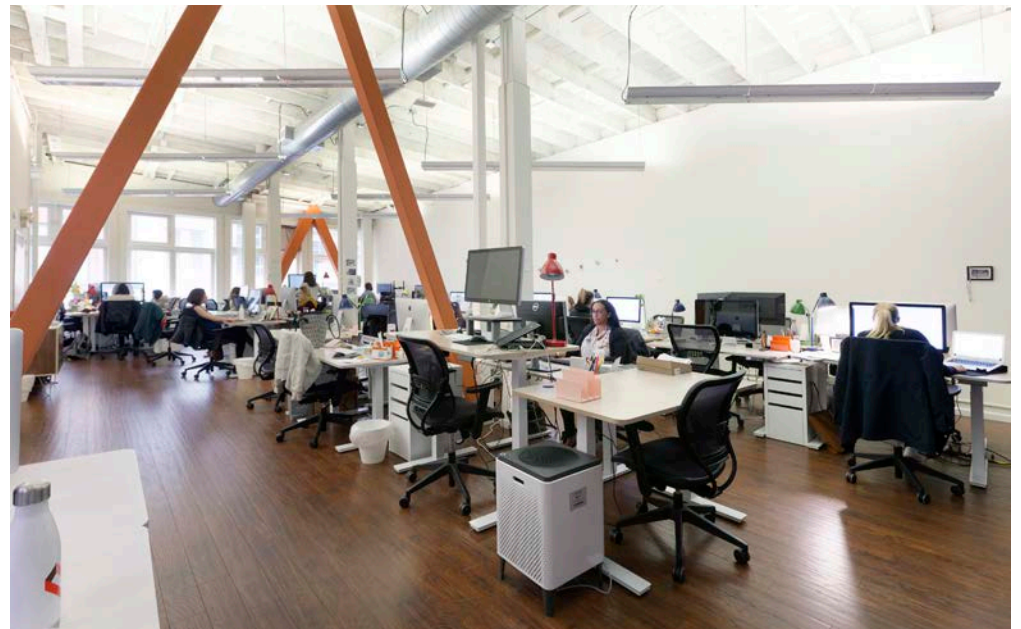
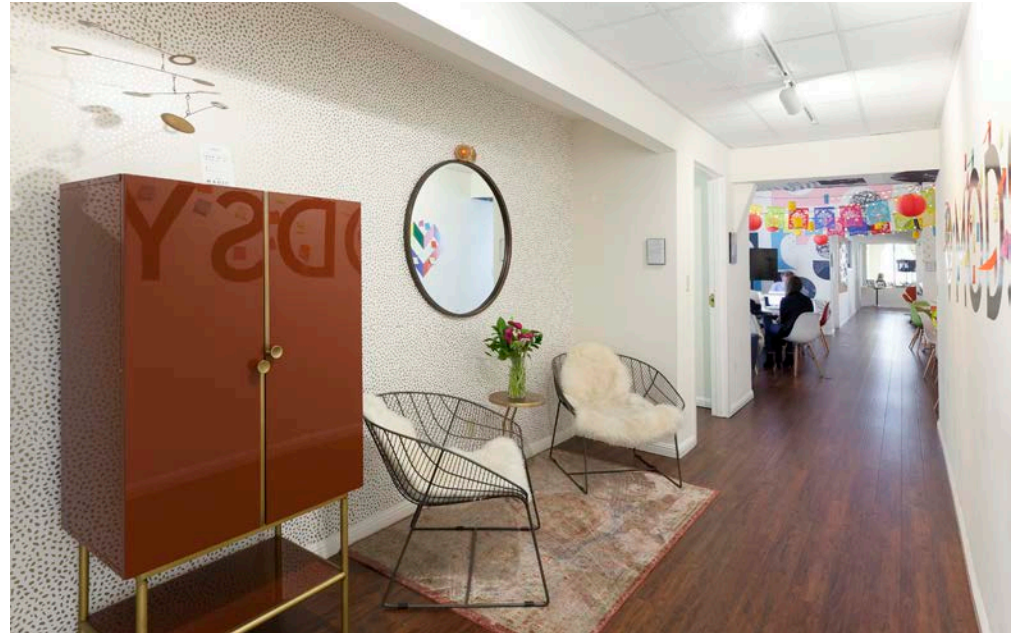
## BUILDING ATTRIBUTES

- + High Ceilings w/ Good Natural Light
- + Large Bullpen Seating Area
- + Three (3) Offices / Meeting Rooms
- + One (1) Large Board Room
- + Spacious Kitchen
- + Seperate Storage / Fulfillment Room
- + Men's & Women's Restrooms
- + Freight Elevator
- + Access from Both Minna Street and Natoma Street





# 116 NATOMA STREET

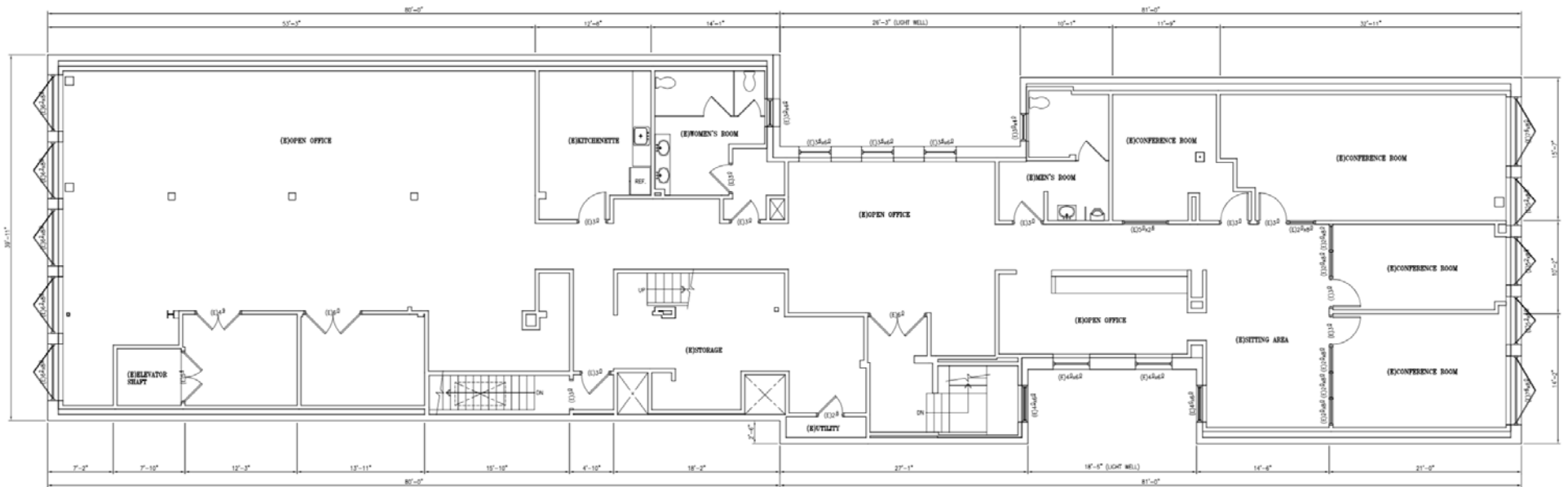


# 116 NATOMA STREET

## Floor Plans

Third Floor

+/- 5,279 Square Feet



EXISTING THIRD FLOOR PLAN  
SCALE: 3/16"=1'-0"



# 116 NATOMA STREET

## LOCATION OVERVIEW

Desirable South of Market location, walkable to nearby amenities, public transportation and to surrounding neighborhoods.



**05 MIN** to Montgomery St Bart  
**05 MIN** to 3rd St Muni



**05 MIN** to Financial District  
**05 MIN** to Bay Bridge  
**13 MIN** to Mission District



**04 MIN** to 80 On-Ramp  
**07 MIN** to 280 On-Ramp

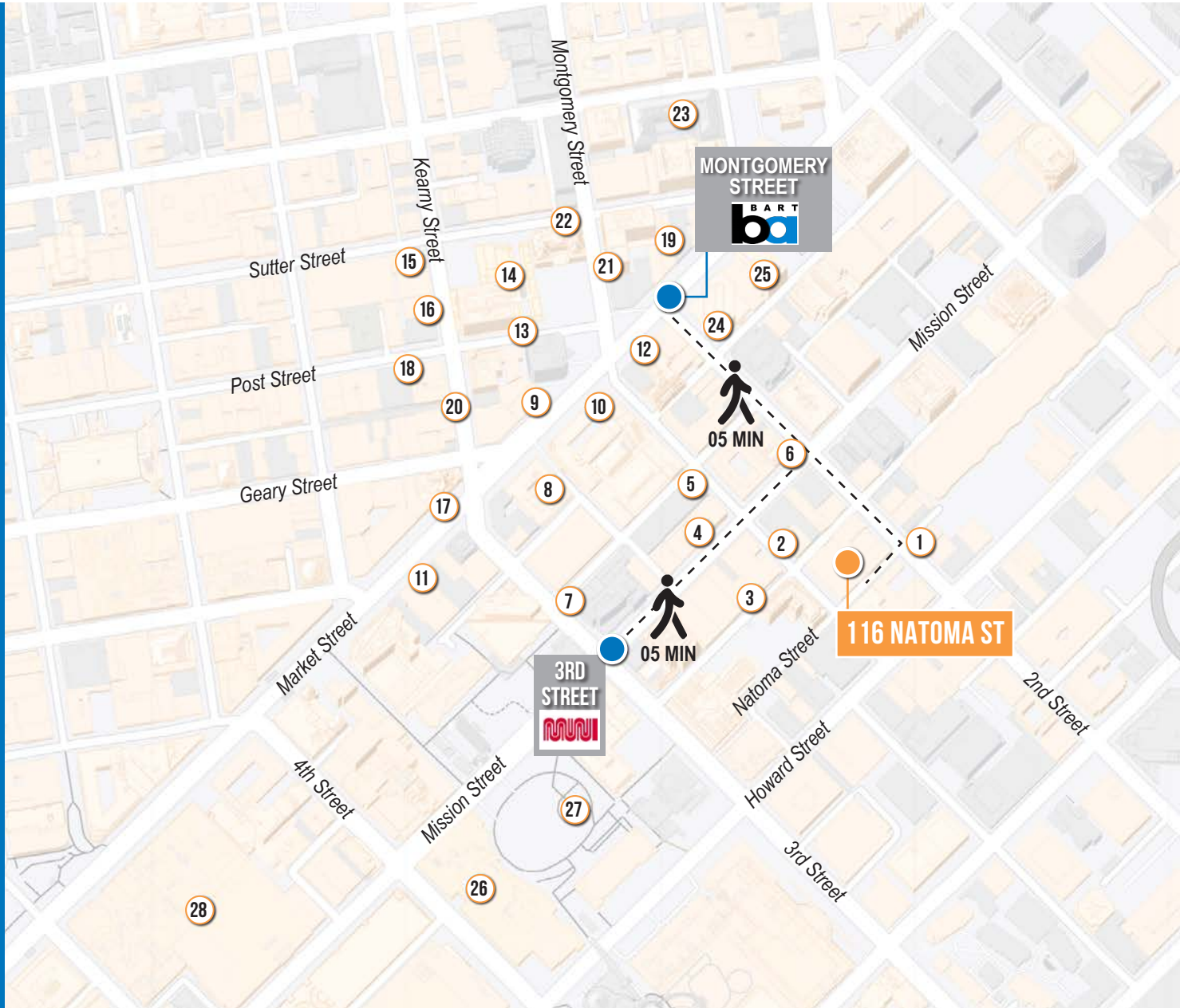




# 116 NATOMA STREET

## NEARBY AMENITIES

- 1..... Sweetgreen
- 2..... The Bird
- 3..... The Pink Elephant Alibi
- 4..... 7-Eleven
- 5..... Starbucks
- 6..... Luke's Lobster SoMa
- 7..... Oren's Hummus
- 8..... Bluestone Lane
- 9..... CoCo Fresh Tea & Juice
- 10..... Ghirardelli Chocolate Shop
- 11..... Super Duper Burgers
- 12..... McDonald's
- 13..... Shlap Muan
- 14..... Crocker Galleria
- 15..... Chipotle Mexican Grill
- 16..... Rooster & Rice
- 17..... Chase Bank
- 18..... Capital One Café
- 19..... Daiso Japan
- 20..... Flybird
- 21..... Starbucks
- 22..... 24 Hour Fitness
- 23..... Target
- 24..... Uno Dos Tacos
- 25..... Amazon Go
- 26..... Metreon
- 27..... Yerba Buena Gardens
- 28..... Westfield SF Centre





# 116 NATOMA STREET



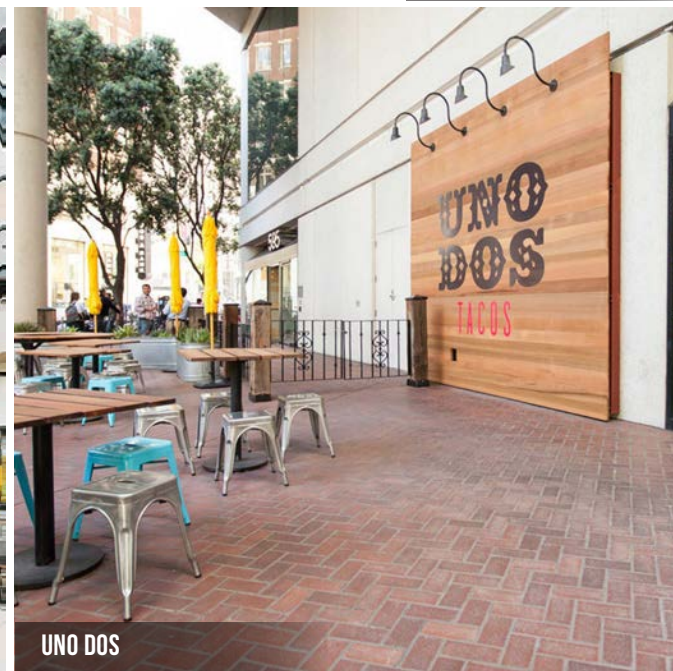
SALESFORCE PARK



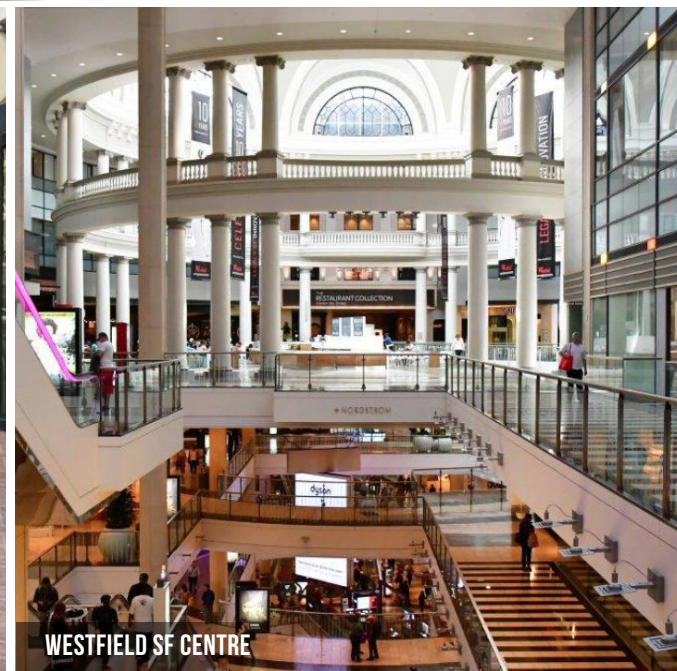
YERBA BUENA GARDENS



CROCKER GALLERIA



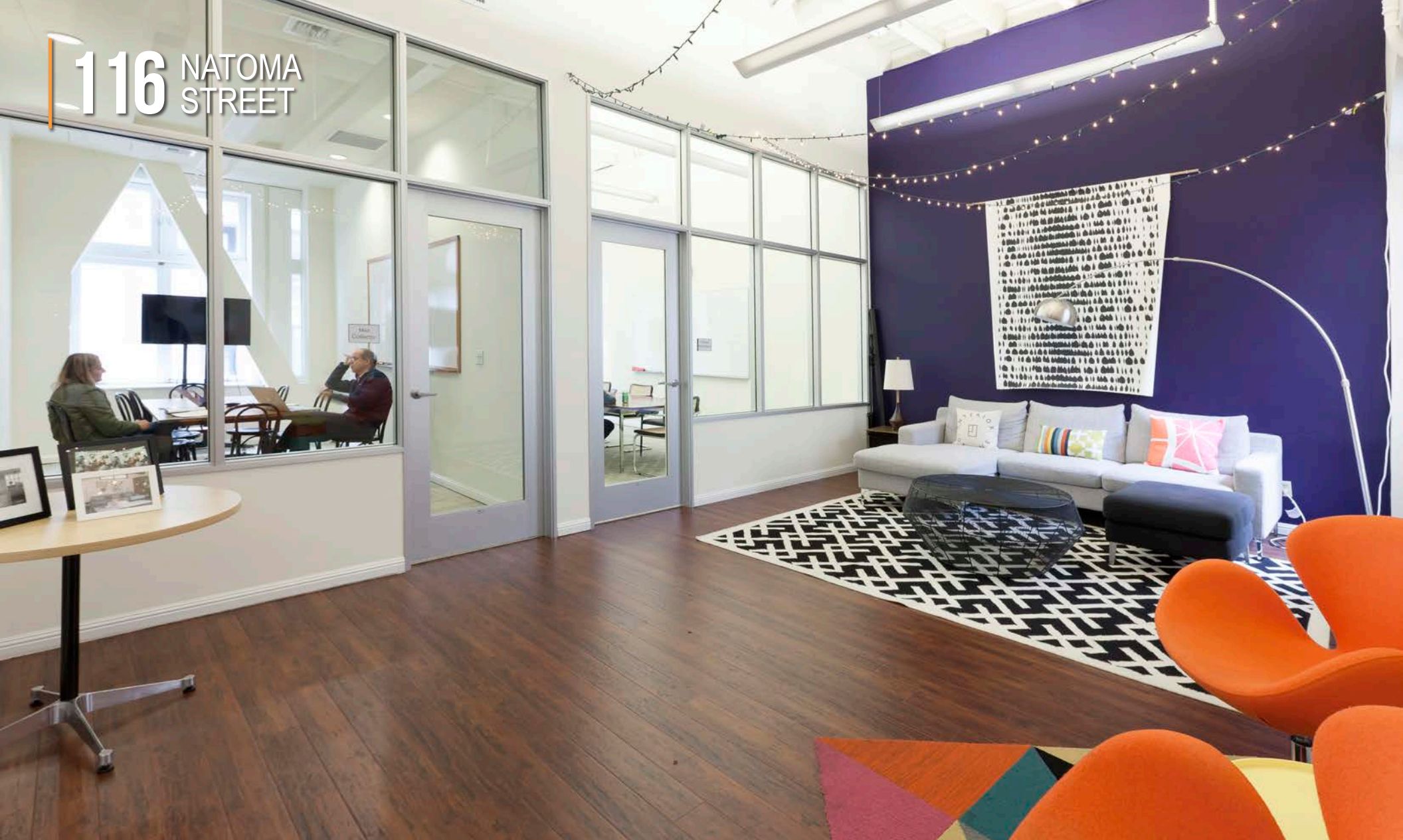
UNO DOS



WESTFIELD SF CENTRE



116 NATOMA STREET



Corp. Lic. 01112906  
www.tcpre.com

**ZACH HAUPERT**

D 415.539.1121 C 415.812.1219  
zhaupert@tcpre.com DRE # 01822907

**MICHAEL SANBERG**

D 415.539.1103 C 415.697.6088  
msanberg@tcpre.com DRE # 01930041

**TREVOR GUDIM**

D 415.539.1122 C 858.922.2632  
trevor@tcpre.com DRE # 01979980

This document has been prepared by Touchstone Commercial Partners for advertising and general information only. Touchstone Commercial Partners makes no guarantees, representations or warranties of any kind, expressed or implied, regarding the information including, but not limited to, warranties of content, accuracy and reliability. Any interested party should undertake their own inquiries as to the accuracy of the information. Touchstone Commercial Partners excludes unequivocally all inferred or implied terms, conditions and warranties arising out of this document and excludes all liability for loss and damages arising there from. This publication is the copyrighted property of Touchstone Commercial Partners and/or its licensor(s). ©2023. All rights reserved.