

FOR LEASE



COMMERCIAL REAL ESTATE SERVICES
PASADENA

MEDICAL OFFICE AVAILABLE FOR LEASE



1330 San Bernardino Rd Upland, CA 91786

CONTACT



CHRIS JOHNSON

Senior Vice President

chris.johnson@lee-associates.com

626.240.2786

License ID 01934154

All information furnished regarding property for sale, rental or financing is from sources deemed reliable, but no warranty or representation is made to the accuracy thereof and same is submitted to errors, omissions, change of price, rental or other conditions prior to sale, lease or financing or withdrawal without notice. No liability of any kind is to be imposed on the broker herein.

OFFERING INFORMATION

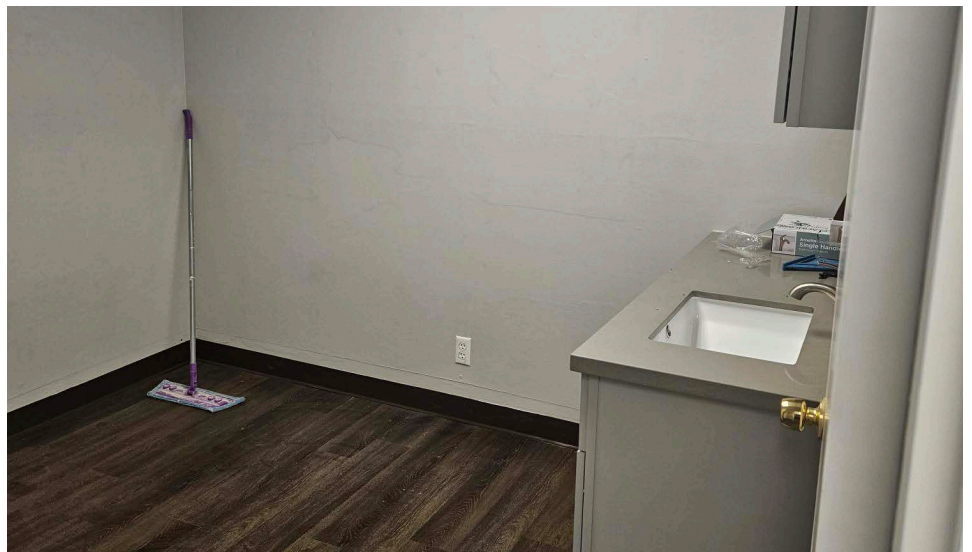
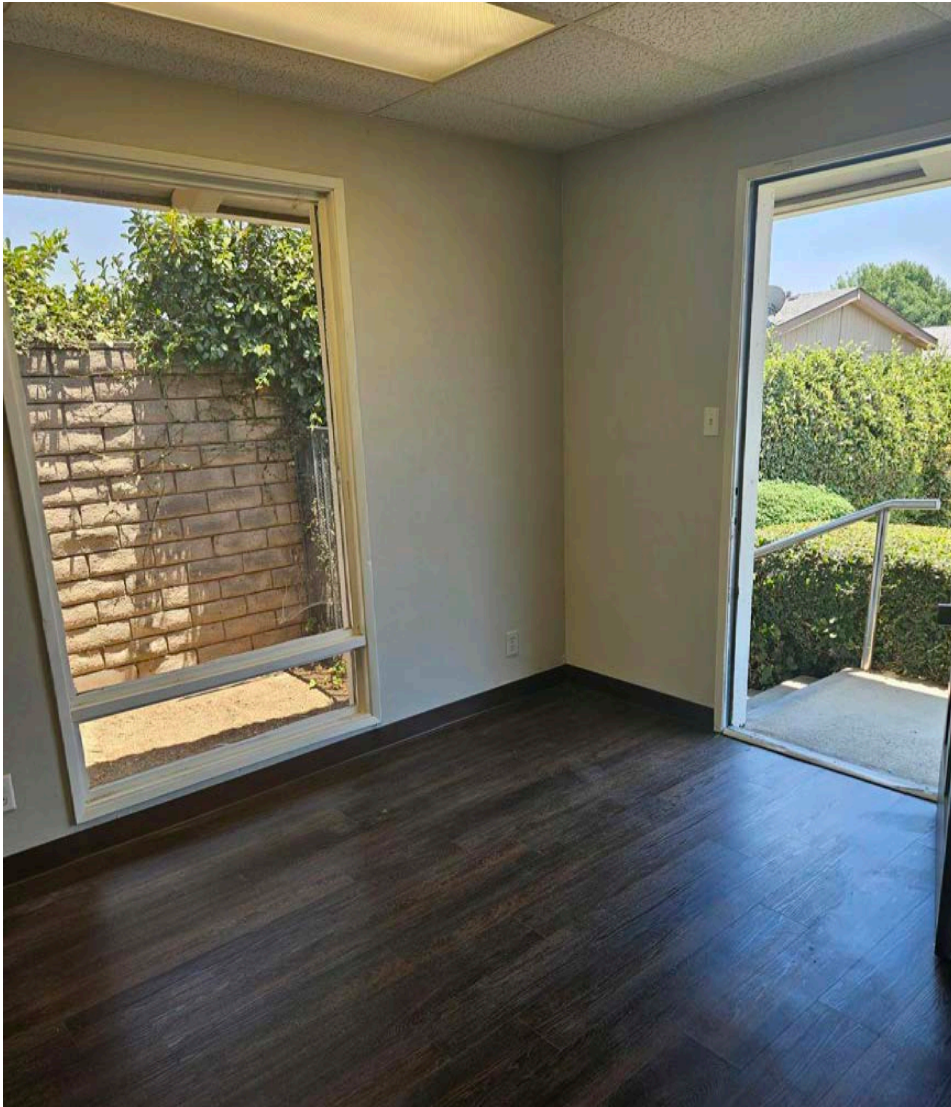
- + Asking Rate: \$2.25 MG
- + Suite Size: ±700 SF (Unit H)
- + Total Building SF: ±8,976 SF
- + Year Built: 1978
- + Parking Ratio: 5:1000
- + APN: 1046-161-02-0000

PROPERTY HIGHLIGHTS

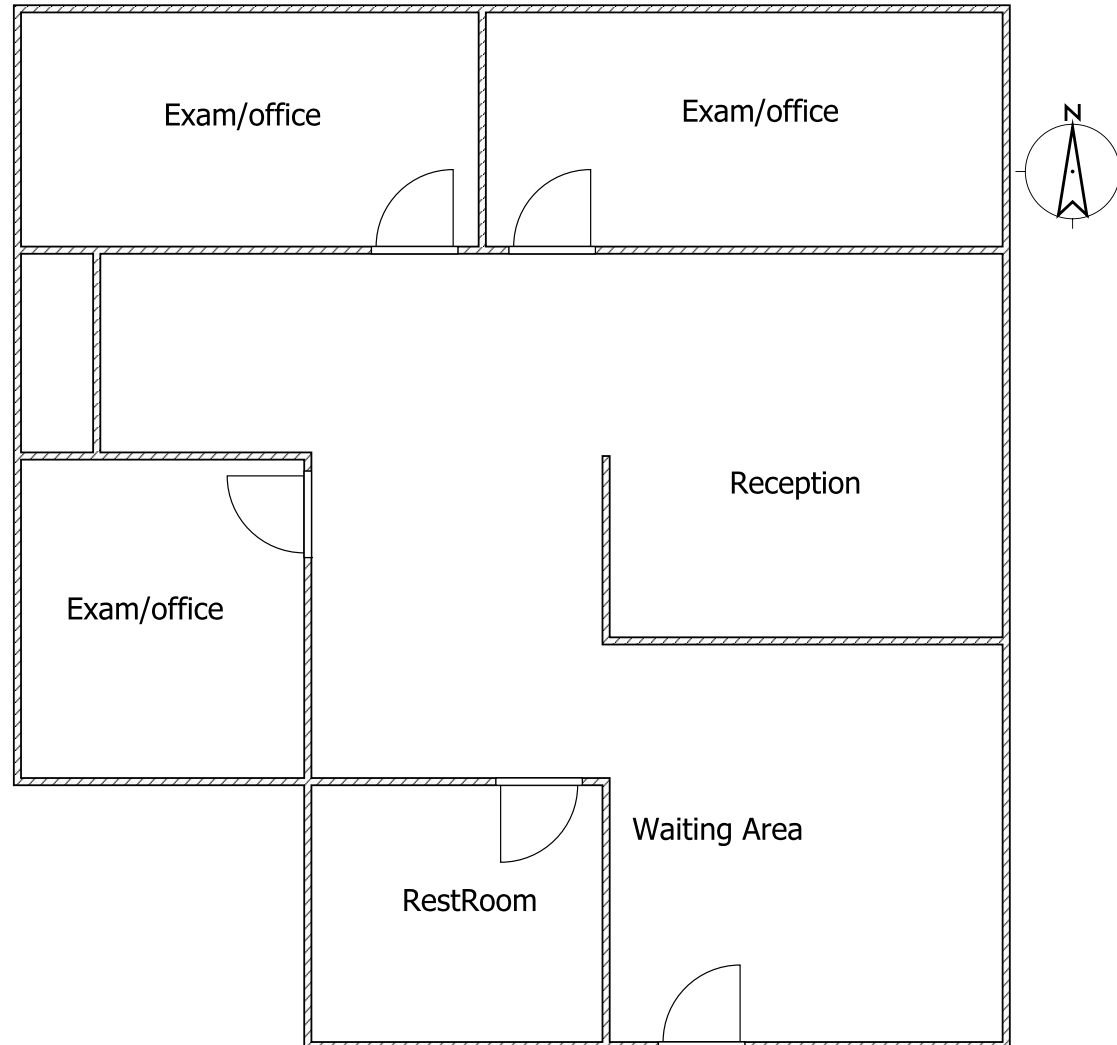
- + Very Functional Layout
- + Move in Ready Condition



INTERIOR PHOTOS | UNIT H



FLOOR PLAN | UNIT H



FOR LEASE
MEDICAL OFFICE BUILDING

1330
SAN BERNARDINO RD
UPLAND, CA 91786

LOCATION HIGHLIGHTS

- + Located Right Across from San Antonio Hospital With Walking Access
- + Many Nearby Ammenities

