

5000 W Oakey

Las Vegas, NV 89146

Industrial for Lease

1,077 – 3,285 SF



Leasing Information: 702.221.8226

Ali Roesener, SIOR
NRE:S.0172338
Senior Vice President
(702) 765-8894
Ali.Roesener@lpc.com

Tony Alvarez
NRE:S.0200369
Associate
(702) 765-8880
Tony.Alvarez@lpc.com

Lincoln

4755 Dean Martin Drive
Las Vegas, NV 89013

www.lpc.com

5000 W Oakey

Las Vegas, NV 89146

Industrial for Lease



Ali Roesener, SIOR
(702) 765-8894
Ali.Roesener@lpc.com

Tony Alvarez
(702) 765-8880
Tony.Alvarez@lpc.com

Lincoln

5000 W Oakey

Las Vegas, NV 89146

Industrial for Lease

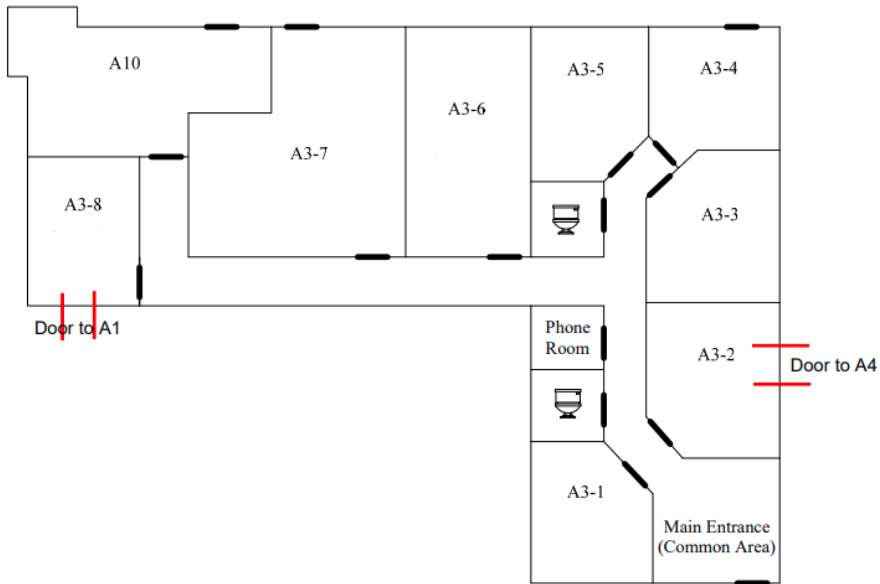
Address	Square Feet	Office	Warehouse	Grade	Asking	CAM	Lease Type	Total Monthly
Building A								
A3	2,845	2,845	0	N/A	\$0.90	\$0.32	NNN	\$3,470.90
A7	1,024	1,024	0	N/A	\$1.20	\$0.32	NNN	\$1,556.48
Building C								
C – 4 , 5	2,829	0	2,829	2G	\$1.00	\$0.32	NNN	\$3,734.28
C – 7	1,410	258	1,152	1G	\$1.15	\$0.32	NNN	\$2,072.70
C – 9	1,320	247	1,073	1G	\$1.15	\$0.32	NNN	\$1,940.40
Building D								
D – 14	1,430	258	1,203	1G	\$1.15	\$0.32	NNN	\$2,102.10
D – 15, 16	3,058	313	2,745	2G	\$0.93	\$0.32	NNN	\$3,822.50
D – 17	1,425	258	1,167	1G	\$1.15	\$0.32	NNN	\$2,094.75
Building E								
E – 5	1,077	219	858	1G	\$1.15	\$0.32	NNN	\$1,583.19
E – 10, 11	3,285	414	2,871	2G	\$0.93	\$0.32	NNN	\$4,106.25

Ali Roesener, SIOR
(702) 765-8894
Ali.Roesener@lpc.com

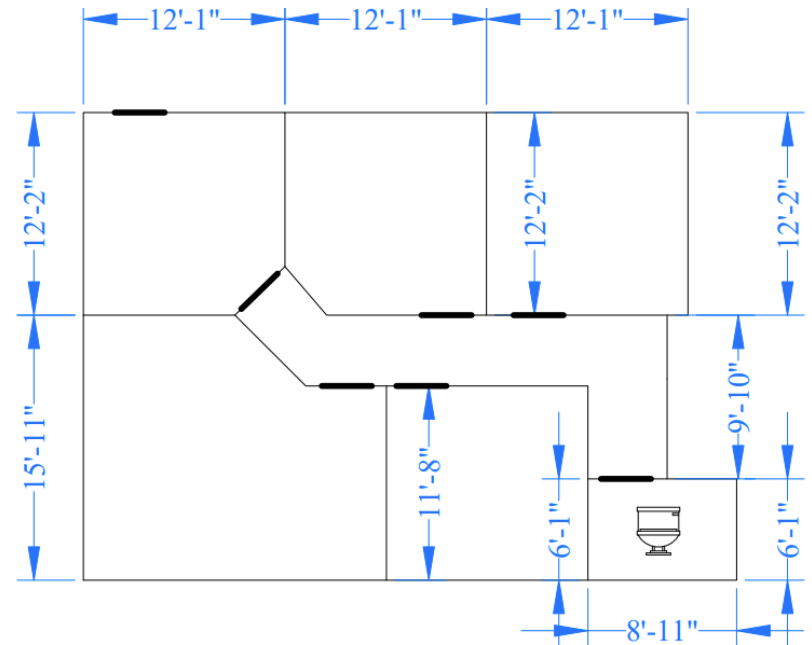
Tony Alvarez
(702) 765-8880
Tony.Alvarez@lpc.com

Lincoln

Building A Available Floorplans



Suite #A - 3 Suites



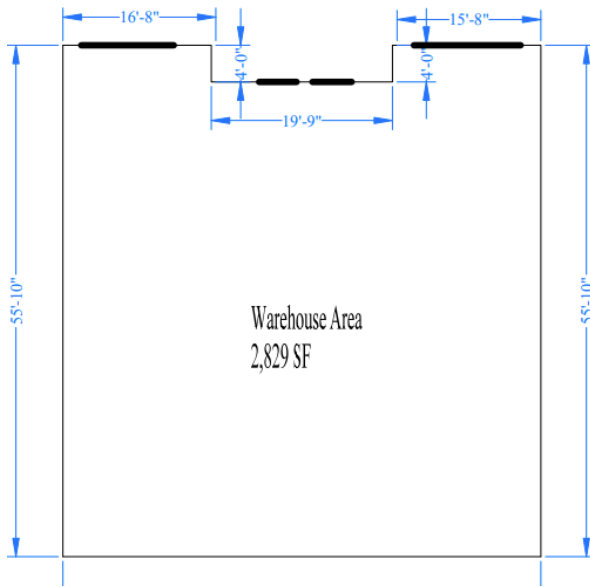
Suite #A - 7

Ali Roesener, SIOR
(702) 765-8894
Ali.Roesener@lpc.com

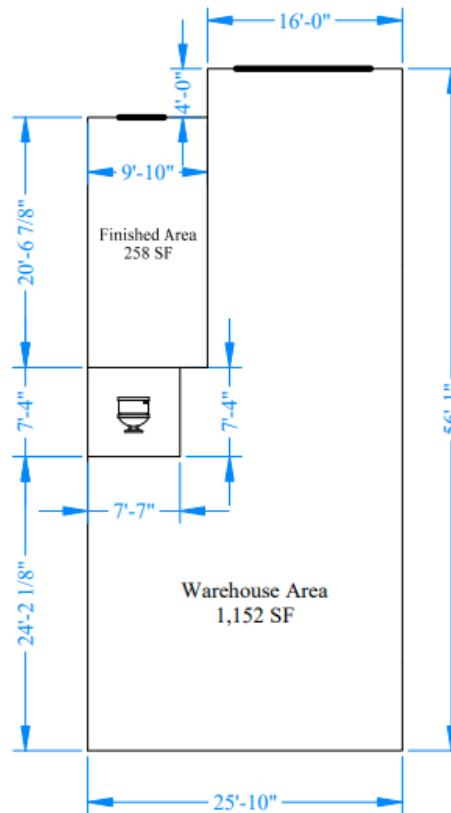
Tony Alvarez
(702) 765-8880
Tony.Alvarez@lpc.com

Lincoln

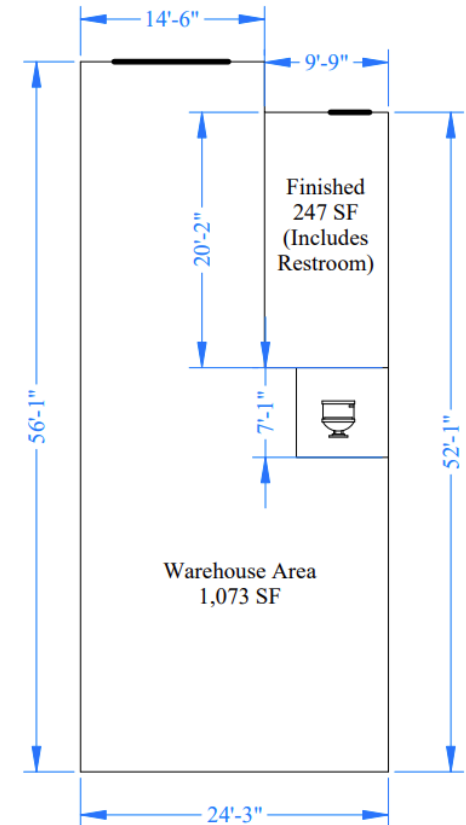
Building C Available Floorplans



Suite #4, 5



Suite #7



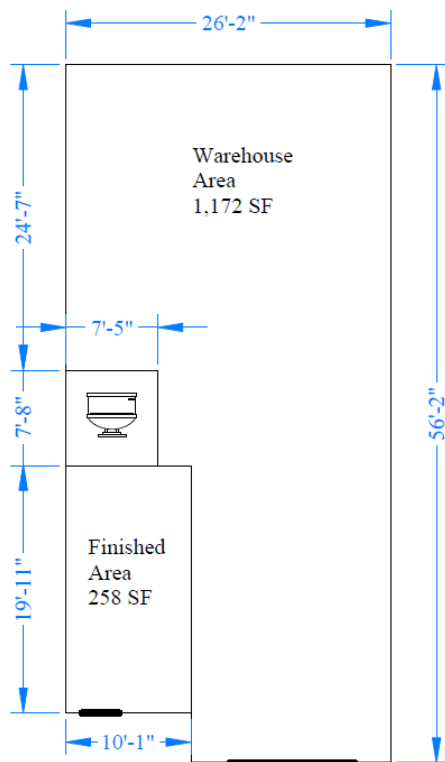
Suite #9

Ali Roesener, SIOR
(702) 765-8894
Ali.Roesener@lpc.com

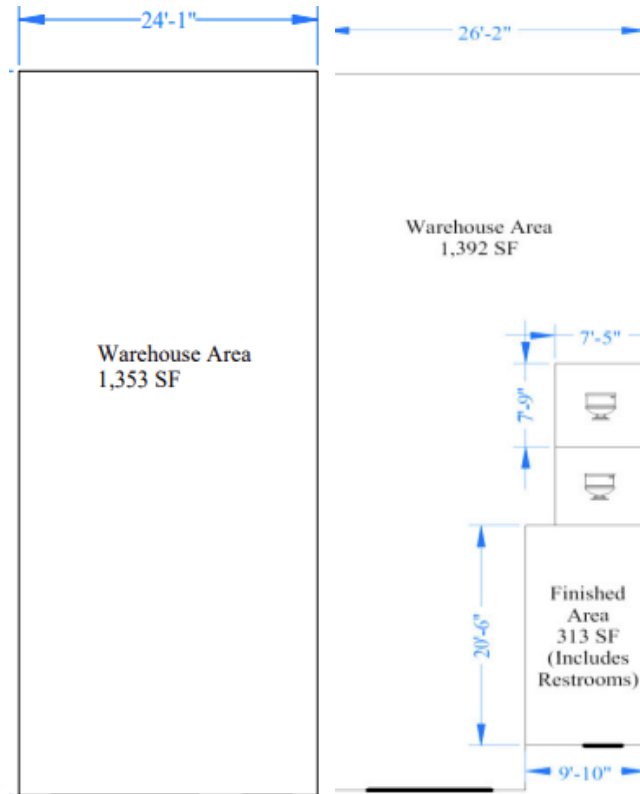
Tony Alvarez
(702) 765-8880
Tony.Alvarez@lpc.com

Lincoln

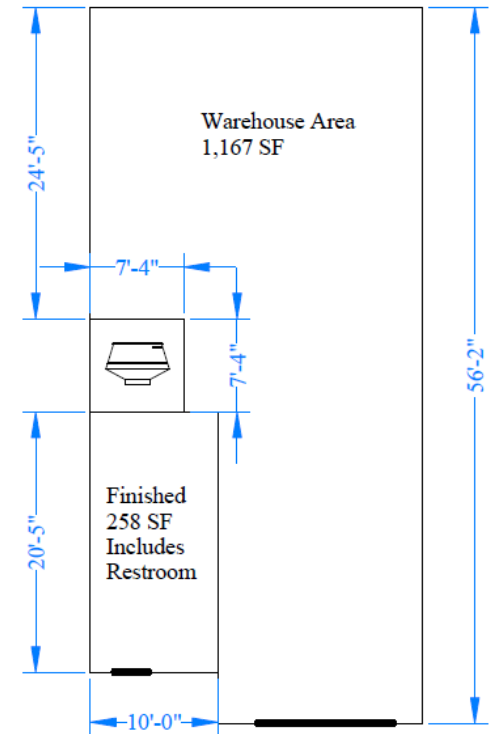
Building D Available Floorplans



Suite #14



Suite #15, 16



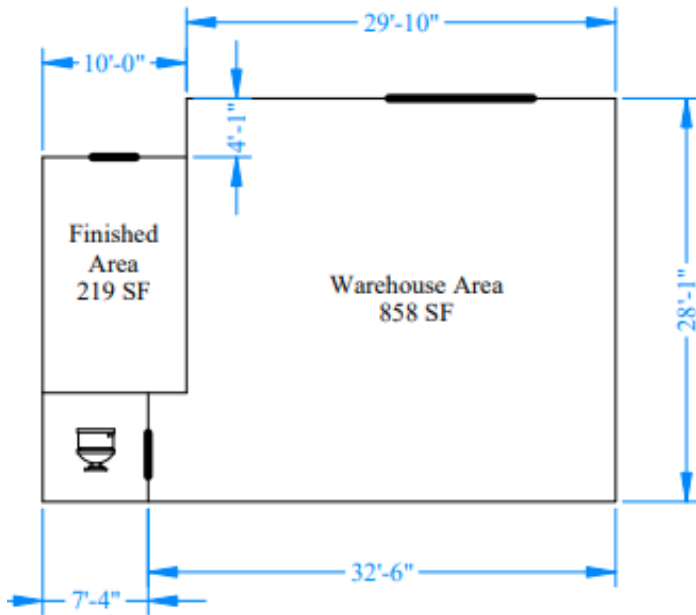
Suite #17

Ali Roesener, SIOR
(702) 765-8894
Ali.Roesener@lpc.com

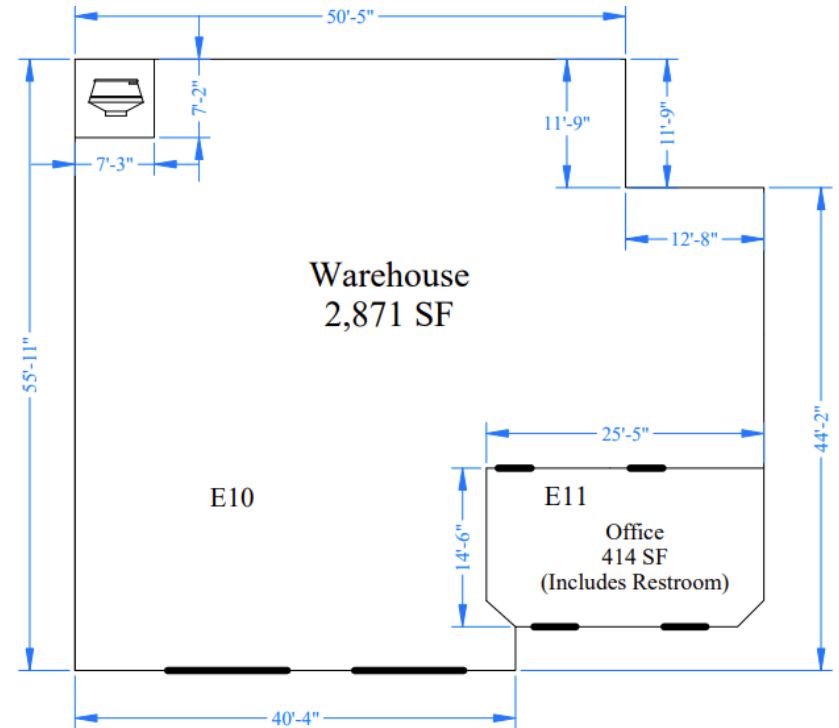
Tony Alvarez
(702) 765-8880
Tony.Alvarez@lpc.com

Lincoln

Building E Available Floorplans



Suite #5



Suite #10, 11

Ali Roesener, SIOR
(702) 765-8894
Ali.Roesener@lpc.com

Tony Alvarez
(702) 765-8880
Tony.Alvarez@lpc.com

Lincoln