

FREESTANDING RETAIL WITH IMMEDIATE ACCESS TO I-80

Retail Space for Sublease

KENNEDY WILSON

BROKERAGE

400 S. Auburn Street | Colfax, CA 95713



JAIMIE MARCHAND
Senior Portfolio Manager
jmarchand@kennedywilson.com
DRE #01904001

DONNA CLARK
Senior Managing Director
dclark@kennedywilson.com
DRE #01134266

For more information: 833-262-3190

FREESTANDING RETAIL WITH IMMEDIATE ACCESS TO I-80

Retail Space for Sublease

400 S. Auburn Street | Colfax, CA 95713

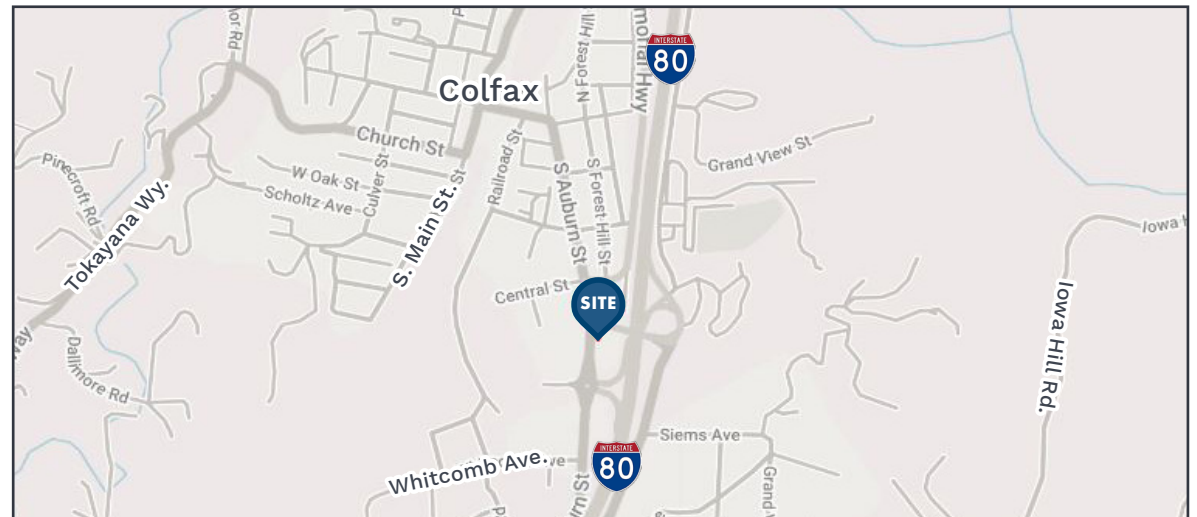
AVAILABLE

Size: ±2,146 SF
Rent: \$2.08 PSF/Mo., NNN
Initial Lease
Term Through: March 13, 2036

PROPERTY HIGHLIGHTS

- Freestanding retail property located directly off I-80 and S. Auburn Street
- Use of gas pumps are not permitted and tanks are in the process of being removed
- Excellent location for stop-over traffic going between the Sierra Nevadas and Sacramento with over 30,000 CPD on I-80
- Directly next to a busy Starbucks

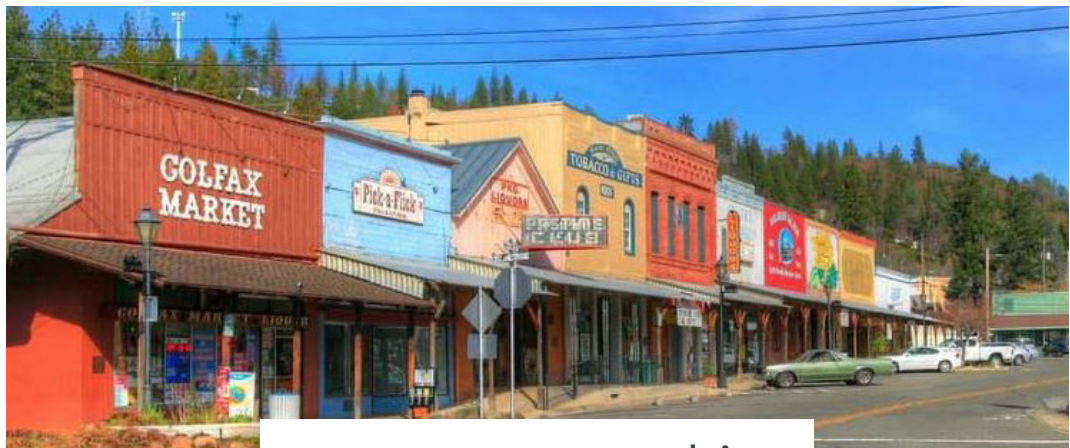
Prospective tenants are hereby advised that all uses are subject to City approval



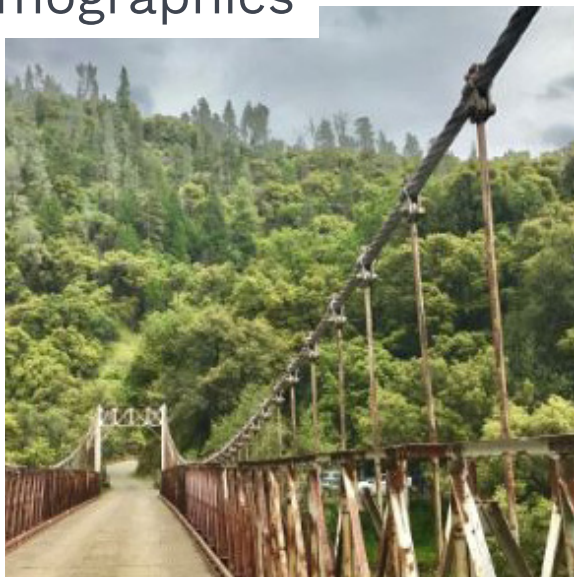
FREESTANDING RETAIL WITH IMMEDIATE ACCESS TO I-80

Retail Space for Sublease

400 S. Auburn Street | Colfax, CA 95713



Area Demographics



	1 Mile	2 Mile	5 Mile
POPULATION			
2023 Estimated Population	1,352	3,619	11,016
2028 Projected Population	1,340	3,602	10,990
2010 Census Population	1,573	4,120	12,557
Projected Annual Growth 2023 to 2028	-0.89%	-0.47%	-0.24%
Historical Annual Growth 2010 to 2023	-14.05%	-12.16%	-12.27%
2023 Median Age	47.7	48.6	50.2
HOUSEHOLDS			
2023 Estimated Households	537	1,474	4,412
2028 Projected Households	531	1,465	4,395
2010 Census Households	632	1,697	5,090
Projected Annual Growth 2023 to 2028	-1.12%	-0.61%	-0.39%
Historical Annual Growth 2010 to 2023	-15.0%	-13.1%	-13.3%
RACE & ETHNICITY			
2023 Estimated White	91.2%	90.0%	91.4%
2023 Estimated Black or African American	0.67%	0.64%	0.74%
2023 Estimated Asian or Pacific Islander	1.70%	1.82%	1.62%
2023 Estimated American Indian or Native Alaskan	1.70%	1.82%	1.67%
2023 Estimated Other Races	4.59%	5.64%	4.41%
2023 Estimated Hispanic	9.32%	9.84%	8.53%
INCOME			
2023 Estimated Average Household Income	\$98,392	\$88,140	\$95,381
2023 Estimated Median Household Income	\$82,184	\$73,258	\$73,415
EDUCATION			
2023 Estimated High School Graduate	25.1%	29.7%	25.2%
2023 Estimated Some College	42.5%	39.1%	38.5%
2023 Estimated Associates Degree Only	4.66%	4.00%	4.44%
2023 Estimated Bachelors Degree Only	15.0%	12.9%	17.3%
2023 Estimated Graduate Degree	9.41%	8.78%	9.10%

KENNEDY WILSON

BROKERAGE

JAIMIE MARCHAND

jmarchand@kennedywilson.com

DRE #01904001

DONNA CLARK

dclark@kennedywilson.com

DRE #01134266

833-262-3190

Kennedy Wilson Brokerage | 1860 Howe Avenue, Suite 240, Sacramento, CA 95825 | 833-262-3190

Kennedy-Wilson Properties, Ltd. (Responsible Broker Identity, DRE #00659610) makes no warranty or representation as to the accuracy of the information contained herein. Terms of sale or lease and availability of the property are subject to change or withdrawal without notice.