

# FOR LEASE

118 W TURBO DR, SAN ANTONIO, TX 78216



## 5,000 - 9,420 SF Industrial Flex

### ABOUT THE PROPERTY:

118 W Turbo Dr. is a 9,420 SF industrial warehouse space in the North Central San Antonio submarket. Tenants benefit from a newly renovated office, three (3) drive-in doors, 3-phase power, and a fenced and gated outside storage yard with quick access to US-281 and Wurzbach Parkway.

### FEATURES:

- 5,000 - 9,420 SF flex space available
- Three (3) drive-in doors (10'x10')
- 15' clear height
- 3-phase power
- Updated LED warehouse lighting
- Fenced and gated outside storage yard
- Quick access to US-281 and Wurzbach Parkway

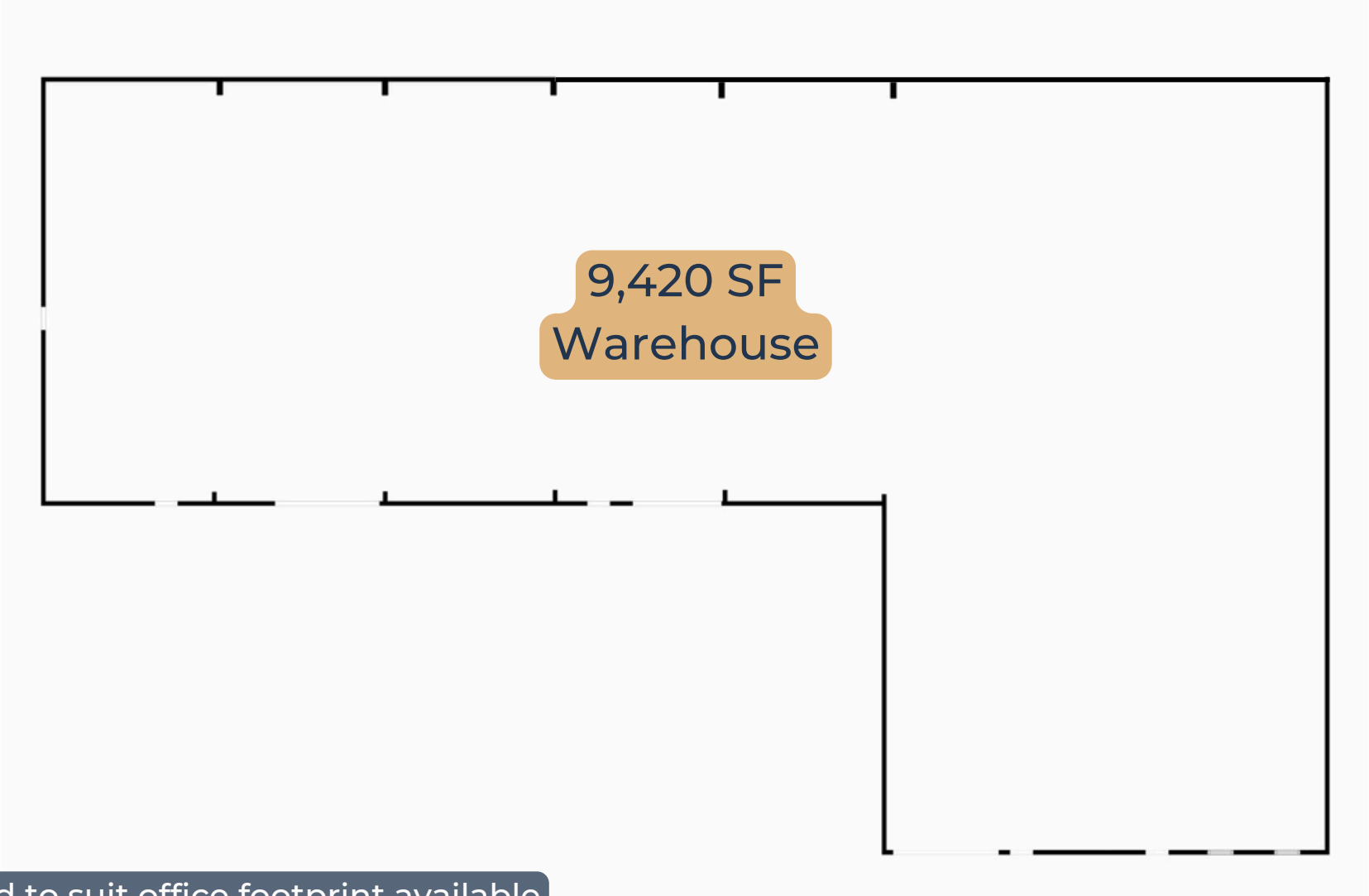
# PROPERTY OVERVIEW

---



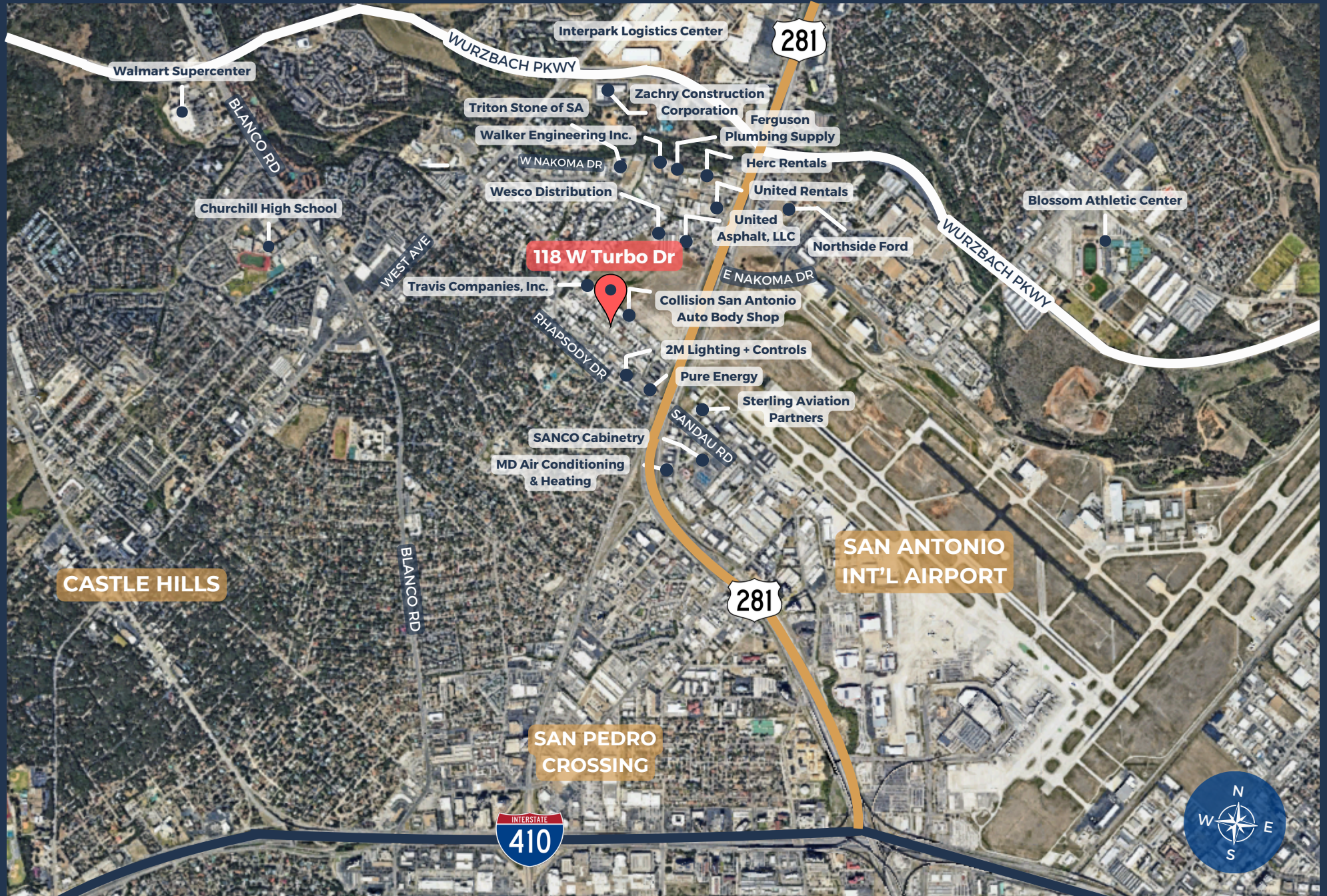
# FLOOR PLAN

---



\*Build to suit office footprint available

# AREA OVERVIEW





CONTACT  
OUR TEAM



Jake Esparza

Associate

[jesparza@llanorealty.com](mailto:jesparza@llanorealty.com)

(210) 874-5314