

LAND AVAILABLE

AXIS  REALTY

Development Site

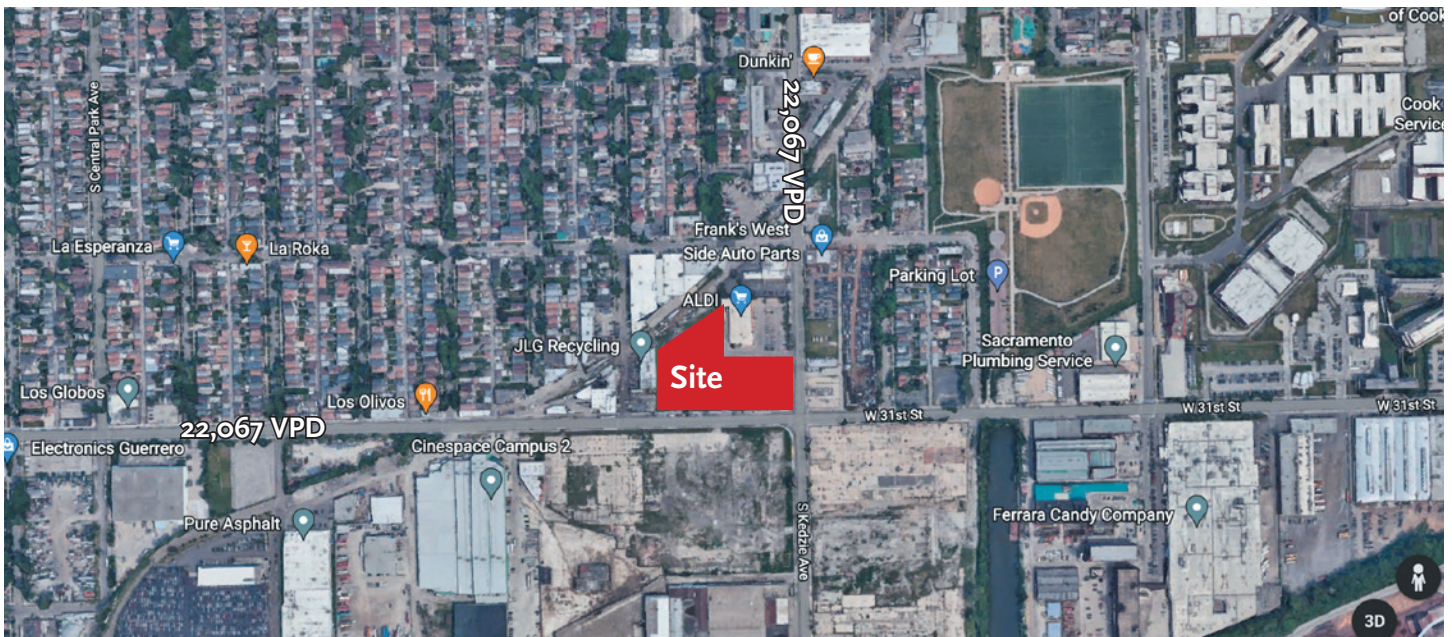
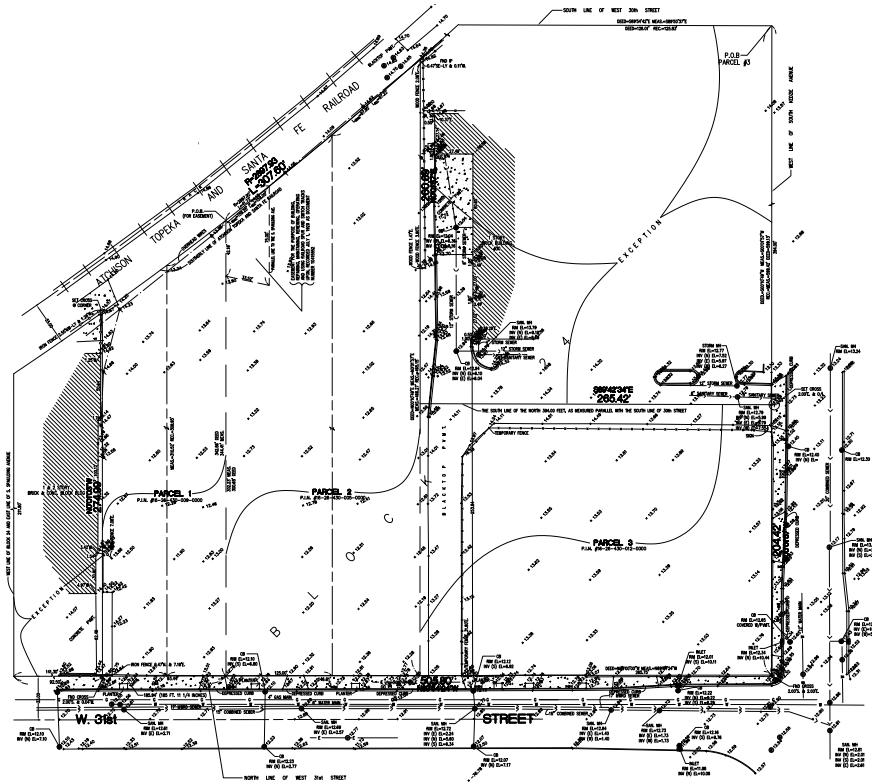
3-Acres of Land Available for Ground Lease or Build-to-Suite 31st & Kedzie - NWC (former industrial site)

Highlights

- > 22,067 VPD along 31st St. and 22,067 VPD along Kedzie Ave
- > Located in Chicago's popular & gentrifying Little Village Neighbor
- > Just 4 miles west of Chicago White Sox' MLB Guaranteed Rate Field
- > Excellent Access and Visibility

Demographics

	1 Mile	3 Miles	10 Miles
2022 Population	144,603	957,637	2,834,677
2022 Households	36,577	323,088	1,083,822
2020 HH Income	\$58,844	\$83,438	\$95,841



Dino Geroulis • dino@axis-realty.com • 773.594.1602
John Roberson • john@axis-realty.com • 312.925.7701

LAND AVAILABLE

AXIS  REALTY

Development Site

3-Acres of Land Available for Ground Lease or Build-to-Suite
31st & Kedzie - NWC (former industrial site)



Dino Geroulis • dino@axis-realty.com • 773.594.1602
John Roberson • john@axis-realty.com • 312.925.7701