



# Development Land for Sale

**9375 LEXINGTON AVENUE  
DE SOTO, KANSAS**

## Property Highlights

- 13.63 buildable acres
- Located adjacent to K-10 Highway
- De Soto is at the intersection of eight major interstates and nine federal highways
- 30 minutes from downtown Kansas City and 25 minutes from Lawrence
- KDOT to complete road expansion and infrastructure improvements along Lexington Avenue
- Part of planned 2.85 mile sanitary sewer benefit district
- One mile from new \$4 billion Panasonic manufacturing facility
- Contact for sale price

*For information, please contact:*

**Graham Stark, JD, MBA**

*Director, Global Corporate Services*

t 816-268-4218

gstark@nzimmer.com

**Mark C. Long, CRE, SIOR, CCIM, LEED AP**

*President and Chief Executive Officer*

t 816-512-1011

mlong@nzimmer.com

1220 Washington Street, Suite 300  
Kansas City, MO 64105

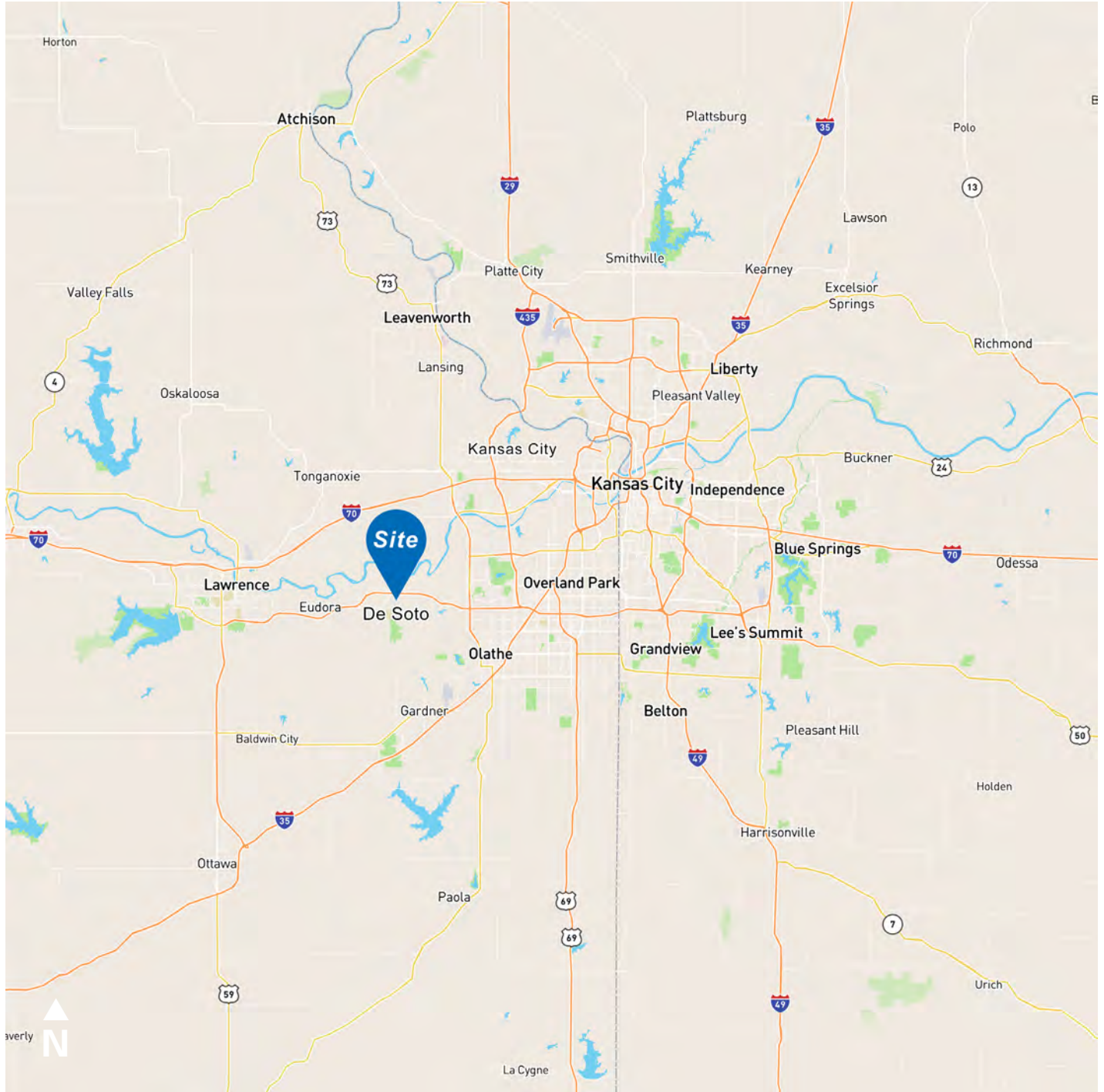
[nrmkzimmer.com](http://nrmkzimmer.com)



**NEWMARK  
ZIMMER**

The information contained herein has been obtained from sources deemed reliable but has not been verified and no guarantee, warranty or representation, either express or implied, is made with respect to such information. Terms of sale or lease and availability are subject to change or withdrawal without notice.

## 9375 LEXINGTON AVENUE, DE SOTO, KANSAS



### CONTACT

#### Graham Stark, JD, MBA

Director, Global Corporate Services

t 816-268-4218

gstark@nzimmer.com

[nmrkzimmer.com](http://nmrkzimmer.com)

#### Mark C. Long, CRE, SIOR, CCIM, LEED AP

President and Chief Executive Officer

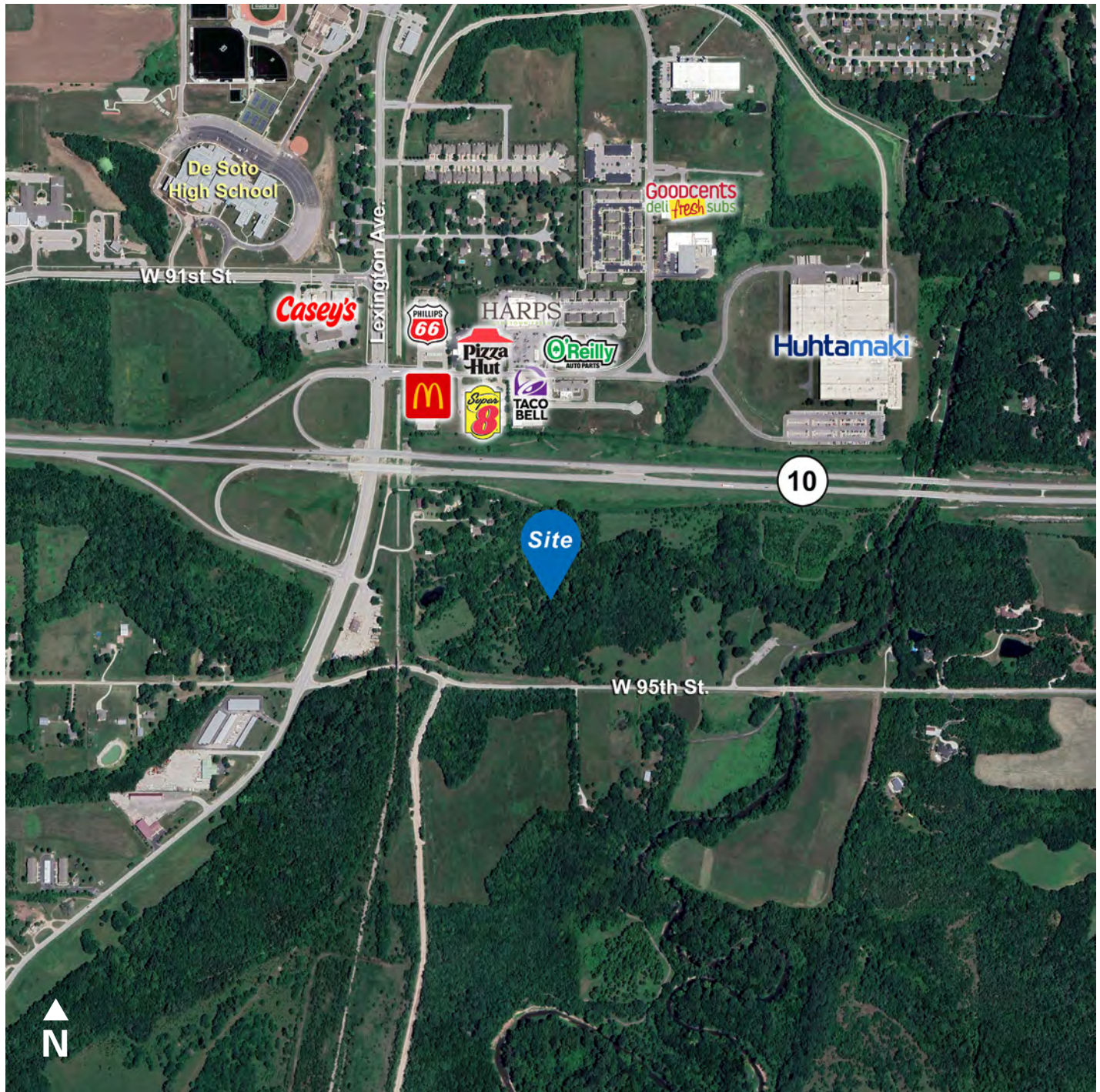
t 816-512-1011

mlong@nzimmer.com

**NEWMARK**  
ZIMMER



9375 LEXINGTON AVENUE, DE SOTO, KANSAS



CONTACT

**Graham Stark, JD, MBA**

*Director, Global Corporate Services*

t 816-268-4218

gstark@nzimmer.com

[nmrkzimmer.com](http://nmrkzimmer.com)

**Mark C. Long, CRE, SIOR, CCIM, LEED AP**

*President and Chief Executive Officer*

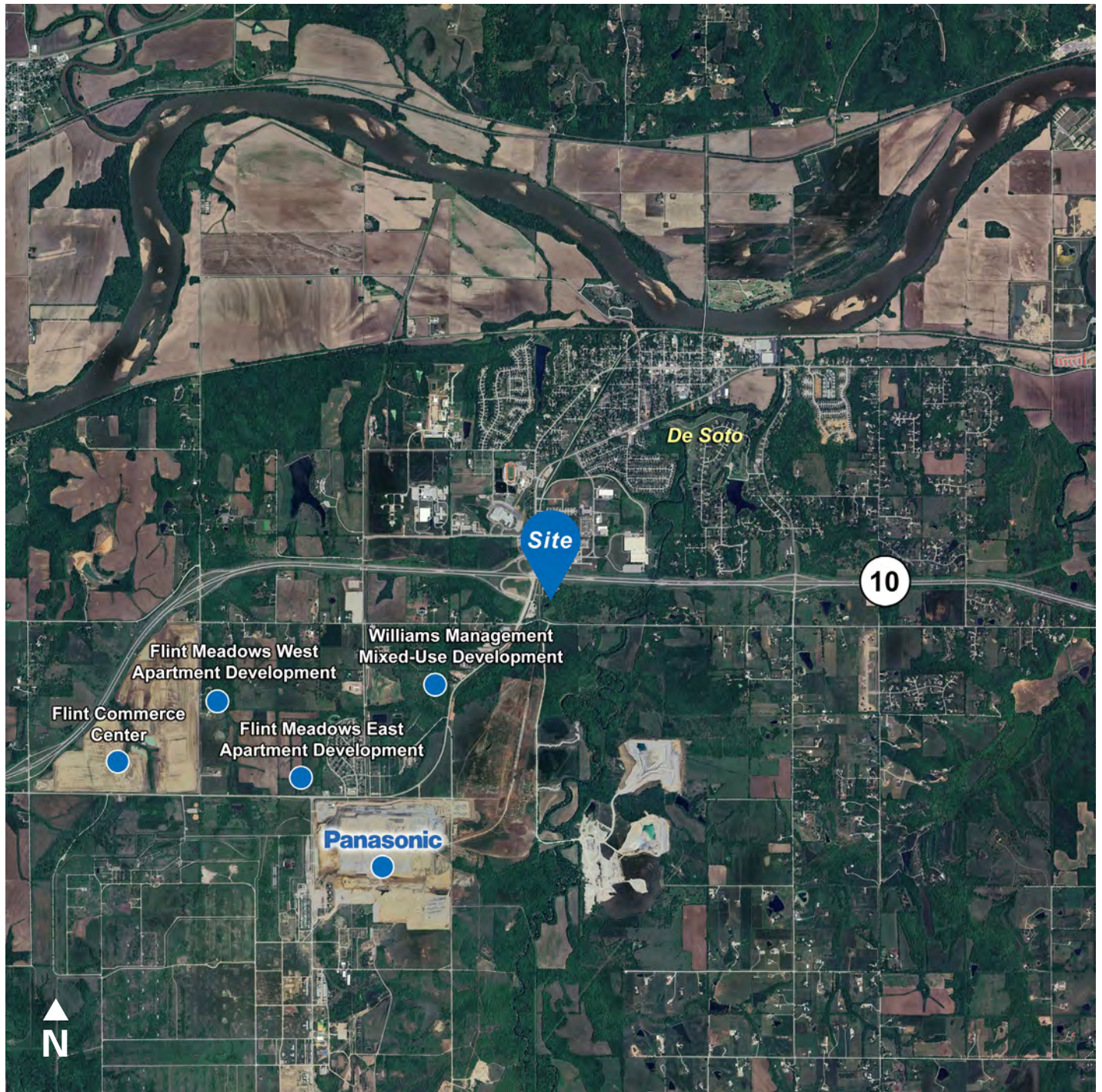
t 816-512-1011

mlong@nzimmer.com

**NEWMARK**  
ZIMMER



9375 LEXINGTON AVENUE, DE SOTO, KANSAS



CONTACT

**Graham Stark, JD, MBA**

*Director, Global Corporate Services*

t 816-268-4218

gstark@nzimmer.com

[nmrkzimmer.com](http://nmrkzimmer.com)

**Mark C. Long, CRE, SIOR, CCIM, LEED AP**

*President and Chief Executive Officer*

t 816-512-1011

mlong@nzimmer.com

**NEWMARK**  
ZIMMER