

3500 Dime Circle

NOW LEASING

OAKPOINT 

3500 Dime Circle
Austin, TX 78744

BUILDING OVERVIEW

3500 Dime Circle is in Southeast Austin Industrial corridor, located off Burleson Rd. This building is easily accessible from IH-35, 71, and 183.

3500 Dime Cir Building

BUILT IN
1985

RENTABLE SPACE
19,513 sf

FLOORS
1

CLEAR HEIGHT
14'



AVAILABILITY

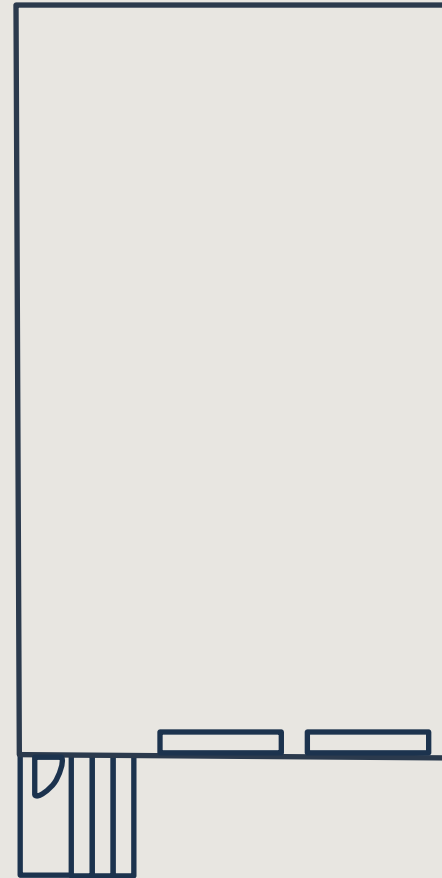
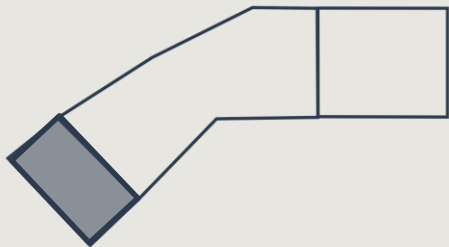
3500 Dime Circle, Suite 101

SIZE

3,042 sf

AVAILABILITY DATE

4/1/2025





AVAILABILITY

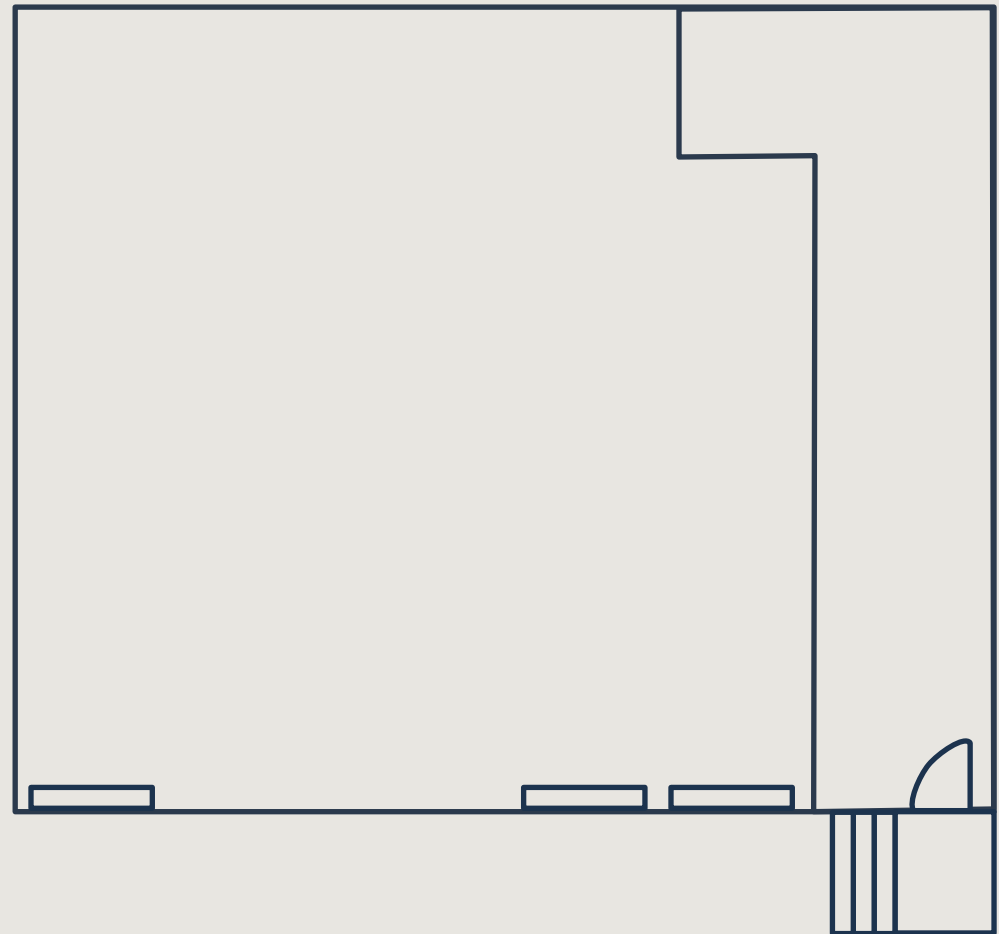
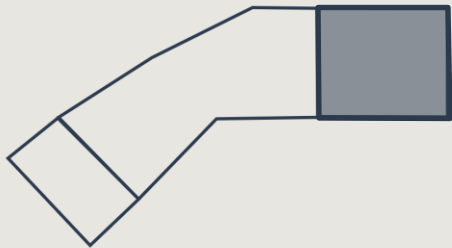
3500 Dime Circle, Suite 109

SIZE

6,000 sf

AVAILABILITY DATE

Available Now





AVAILABILITY

3500 Dime Circle, Suite 109





LEASING INFORMATION

3500 Dime Circle is operated by OakPoint, a vertically integrated firm with a diverse portfolio in commercial, multifamily, office, residential, and industrial real estate.

For leasing information, please contact:

DAN FRICKS

Leasing

O (512) 640-6278

E dfricks@oakpointre.com

