

FOR LEASE

3021 REYNOLDS RANCH PARKWAY, LODI, CA 95240

# THE REYNOLDS BUILDING



For More Information, Please Contact:

**BRIAN PETERSON**

Senior Vice President

Lic. 01718738

+ 1 209 476 2907

brian.peterson@cbre.com

**STEVE WHITE**

First Vice President

Lic. 01781200

+ 1 209 476 2906

steve.white@cbre.com

[www.cbre.com/cacentralvalley](http://www.cbre.com/cacentralvalley)

GRUPE  
HUBER

CBRE

# THE REYNOLDS BUILDING

3021 REYNOLDS RANCH PARKWAY  
LODI, CA 95240

## FEATURES:



Class A Office Building,  
Campus-Like Setting



Suites ranging from  
 $\pm 310$  -  $\pm 4,384$  RSF



Adjacent to Highway 99



Close proximity to new residential,  
retail and other amenities



Outdoor courtyard and event space



Solar

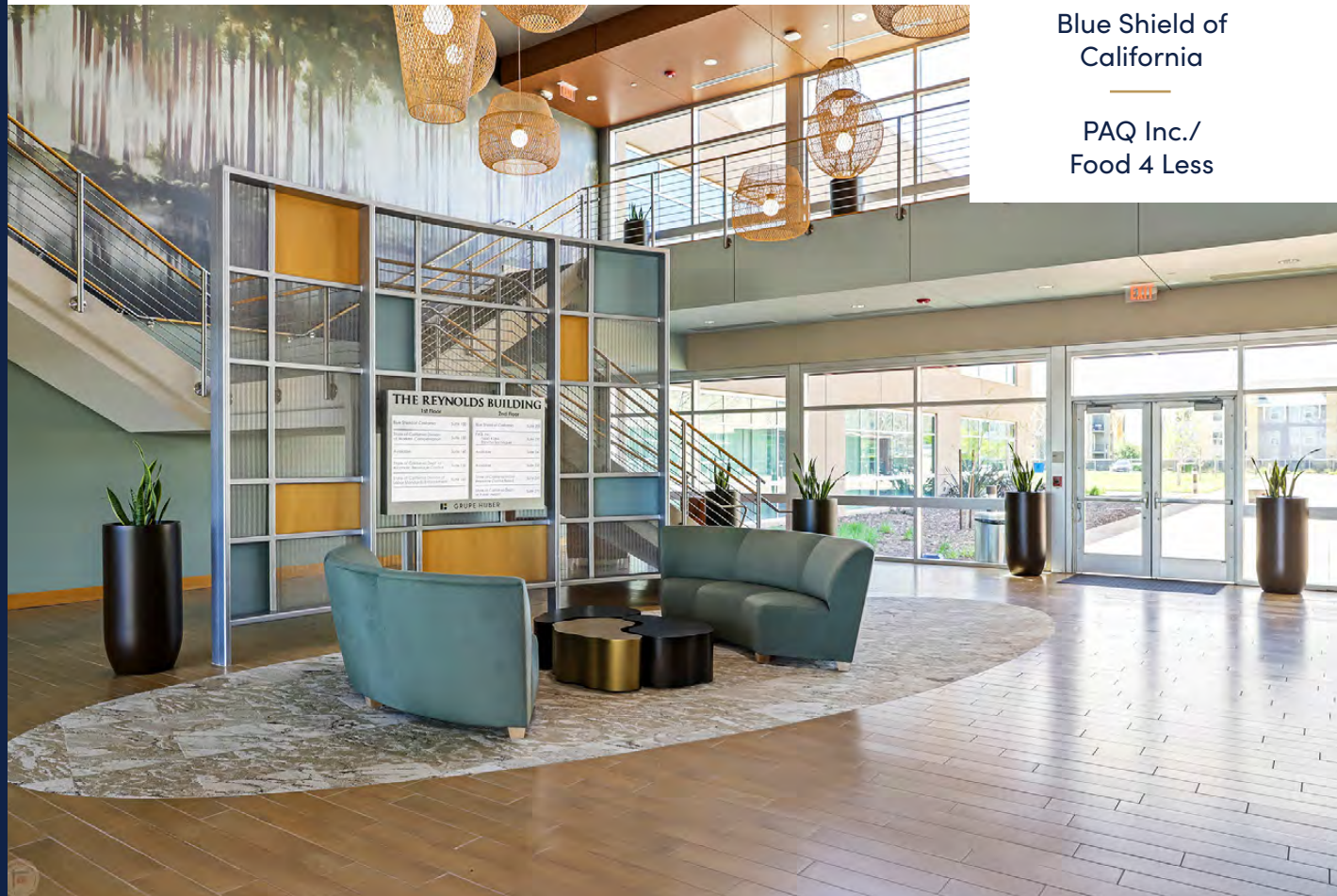


## TENANT MIX:

State of  
California

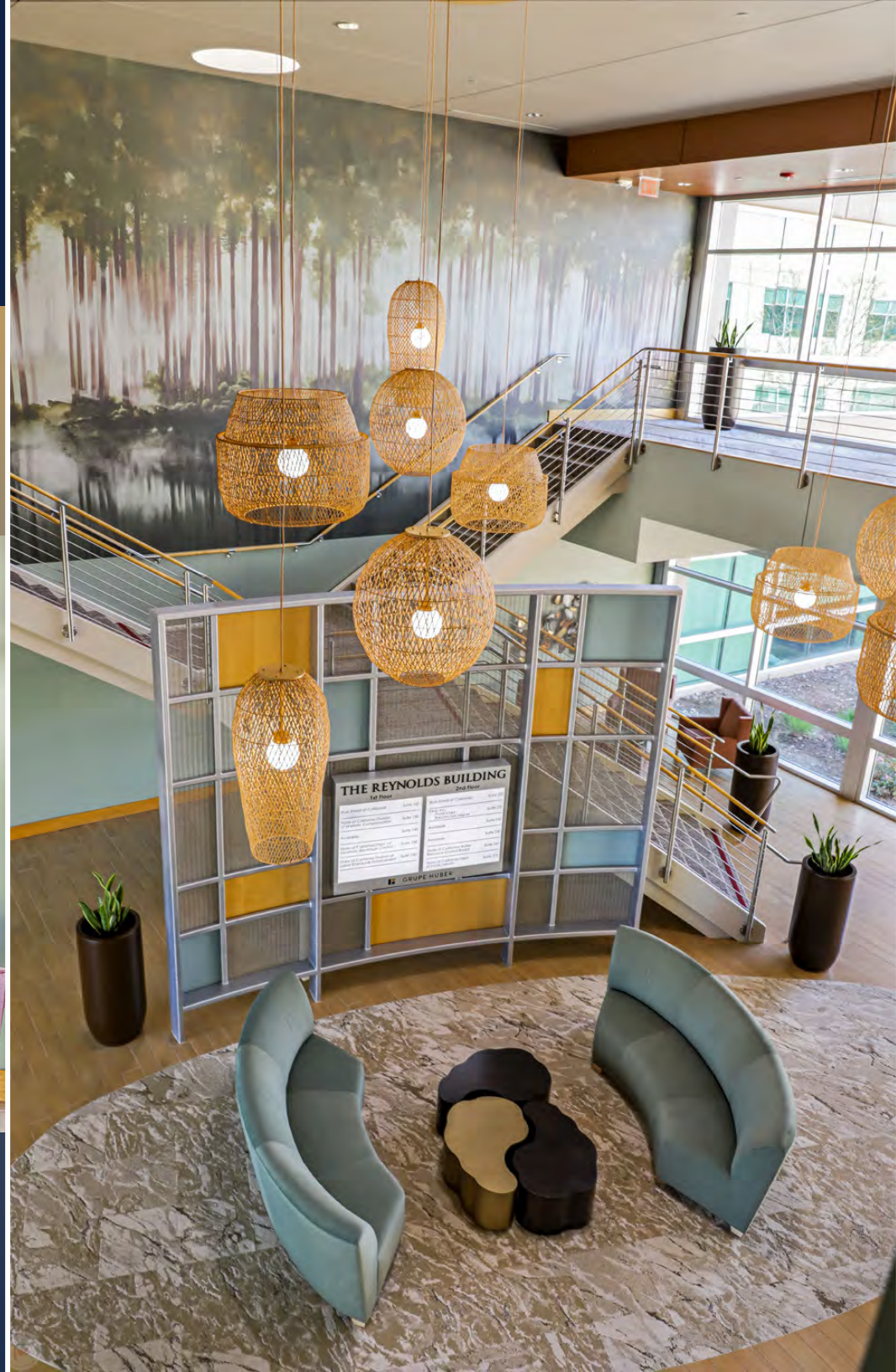
Blue Shield of  
California

PAQ Inc./  
Food 4 Less



# THE REYNOLDS BUILDING

3021 REYNOLDS RANCH PARKWAY  
LODI, CA 95240





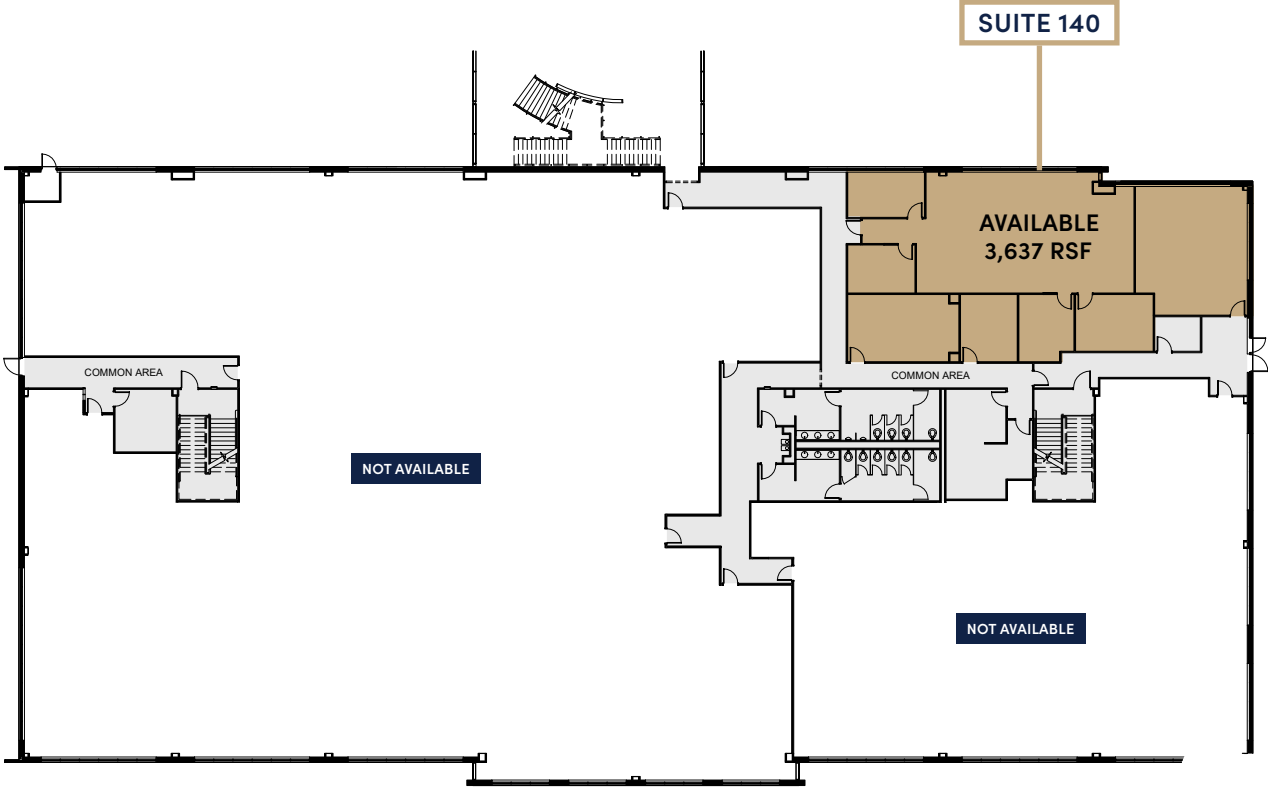
# THE REYNOLDS BUILDING

3021 REYNOLDS RANCH PARKWAY  
LODI, CA 95240



1ST FLOOR  
SUITE 140  
3,637 RSF

## FLOOR PLAN



ALL MEASUREMENTS ARE APPROXIMATE.

■ = AVAILABLE SPACE  
■ = COMMON AREA



# THE REYNOLDS BUILDING

3021 REYNOLDS RANCH PARKWAY  
LODI, CA 95240



2ND FLOOR  
310 RSF

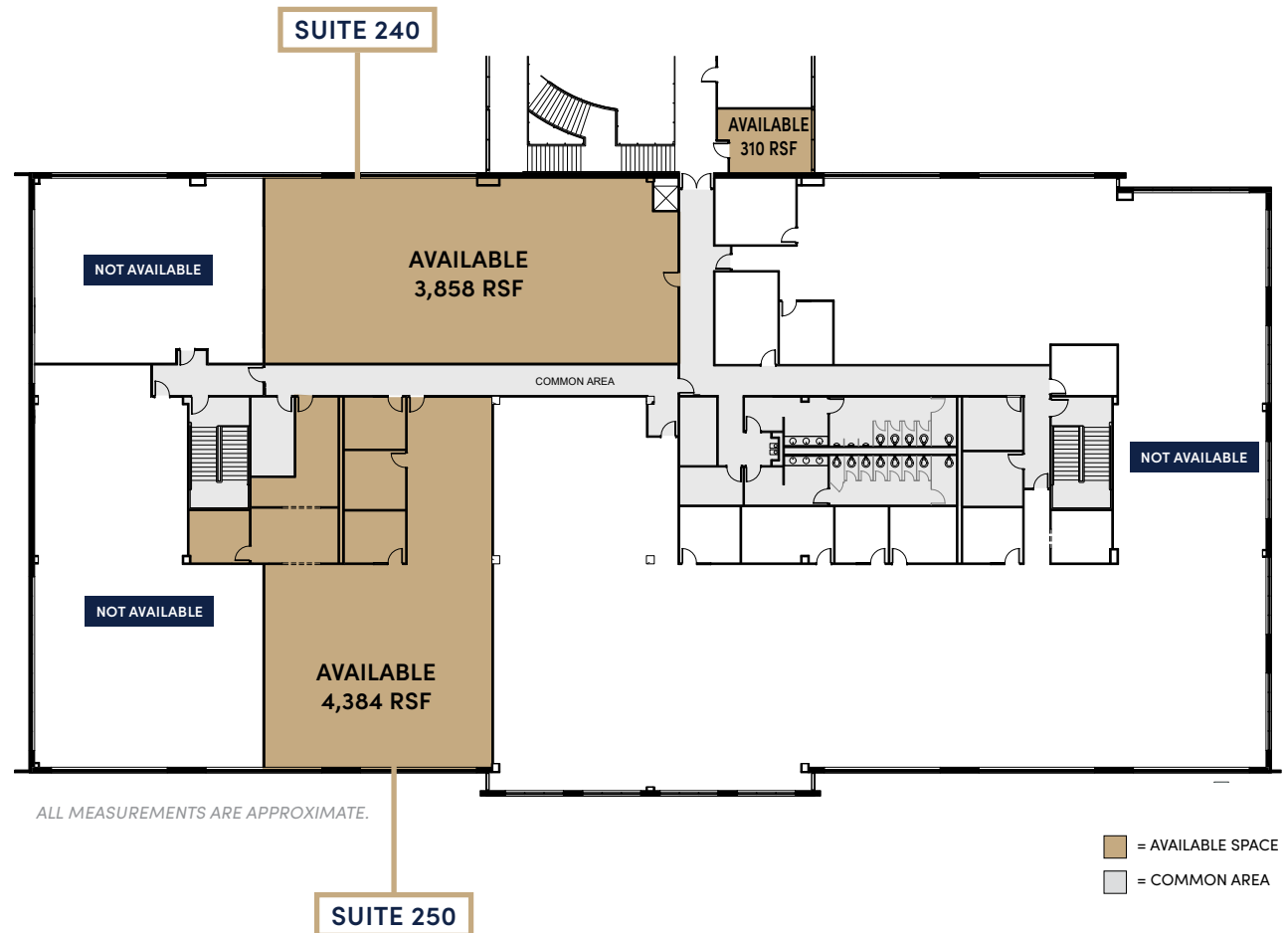
+

SUITE 240  
3,858 RSF

+

SUITE 250  
4,384 RSF

## FLOOR PLAN



# THE REYNOLDS BUILDING

3021 REYNOLDS RANCH PARKWAY  
LODI, CA 95240



# THE REYNOLDS BUILDING

3021 REYNOLDS RANCH PARKWAY  
LODI, CA 95240

## NEARBY AMENITIES



SPROUTS FARMERS MARKET | Mancini's SLEEPWORLD | am pm | UPS | FIVE GUYS | SUBWAY

FAIRFIELD INN

76 | 7 ELEVEN

WING STOP | BURGER KING | AT&T

LAVIDA

Dakmont

Residence INN

COSTCO WHOLESALE

REVEL

THE HOME DEPOT

DICK'S SPORTING GOODS  
BOOT BARN

LAURICON

THE REYNOLDS BUILDING  
SITE





# THE REYNOLDS BUILDING

3021 REYNOLDS RANCH PARKWAY  
LODI, CA 95240

For More Information,  
Please Contact:

**BRIAN PETERSON**

Senior Vice President

Lic. 01718738

+ 1 209 476 2907

[brian.peterson@cbre.com](mailto:brian.peterson@cbre.com)

**STEVE WHITE**

First Vice President

Lic. 01781200

+ 1 209 476 2906

[steve.white@cbre.com](mailto:steve.white@cbre.com)

[www.cbre.com/cacentralvalley](http://www.cbre.com/cacentralvalley)



© 2024 CBRE, Inc. All rights reserved. This information has been obtained from sources believed reliable, but has not been verified for accuracy or completeness. You should conduct a careful, independent investigation of the property and verify all information. Any reliance on this information is solely at your own risk. CBRE and the CBRE logo are service marks of CBRE, Inc. All other marks displayed on this document are the property of their respective owners, and the use of such logos does not imply any affiliation with or endorsement of CBRE. Photos herein are the property of their respective owners. Use of these images without the express written consent of the owner is prohibited. PMStudio\_August2024