



CLARION PARTNERS

# For Lease

Class A Warehouse / Office Space

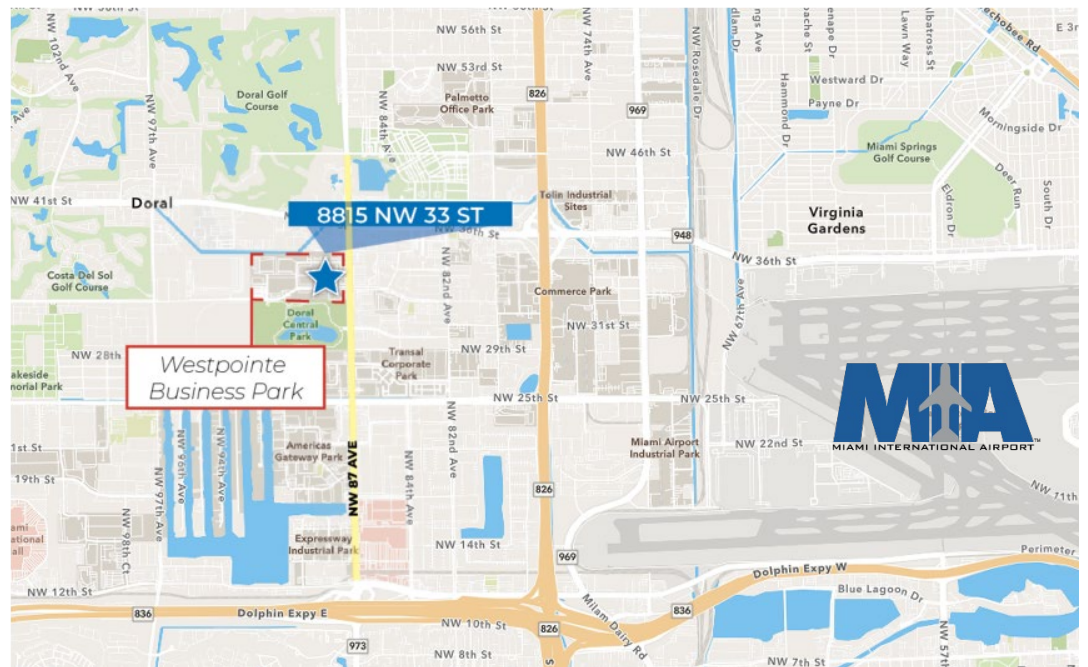
Westpointe Business Park  
8815 NW 33rd ST. #100  
Doral, FL 33172

23,979 Square Feet Available



## BUILDING HIGHLIGHTS

- 23,979 SF Total
- 2,246 SF Office
- 4 DH positions
- 1 doublewide ramp
- 24' clear CH
- Parking +/-24 spots
- Asking rate: \$19.50 PSF NNN
- \$3.88 PSF in Operating Expenses

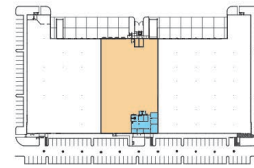
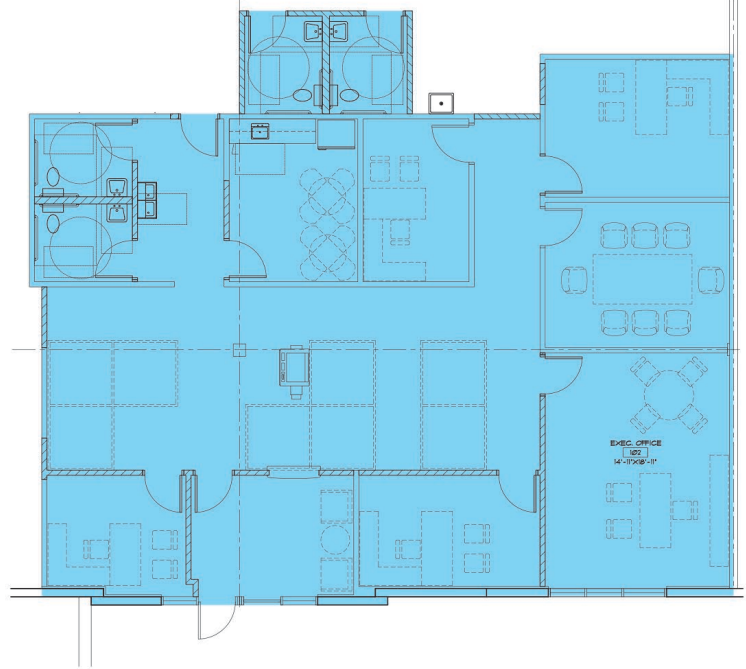
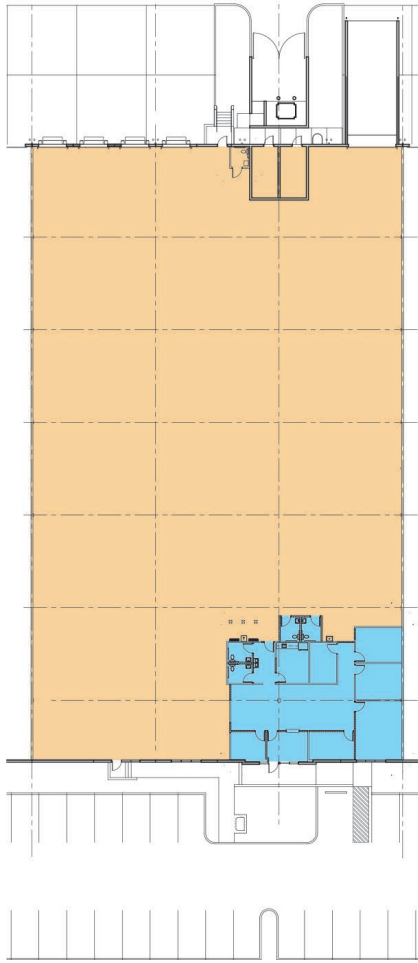


This information contained herein was obtained from sources deemed reliable and is believed to be true. It has not been verified and as such, cannot be warranted nor form any part of any future contract.



# CLARION PARTNERS

## Westpointe Business Park



Westpointe Business Park in Doral, Florida, offers modern office and warehouse spaces conveniently located near major highways and Miami International Airport. With upscale amenities and ample parking, it provides an ideal workspace for businesses in South Florida's bustling commercial hub.



## CLARION PARTNERS

[www.clarionpartners.com](http://www.clarionpartners.com)

For more information on this opportunity, please contact

 TRANSWESTERN

Thomas Kresse  
305.808.7827  
[thomas.kresse@transwestern.com](mailto:thomas.kresse@transwestern.com)

 TRANSWESTERN

Carlos Gaviria  
305.808.7313  
[carlos.gaviria@transwestern.com](mailto:carlos.gaviria@transwestern.com)

 TRANSWESTERN

Ryan Burress  
305.357.3839  
[ryan.burress@transwestern.com](mailto:ryan.burress@transwestern.com)