



3221 N San Fernando Rd

3221 N San Fernando Rd, Los Angeles, CA 90065



Stephen Azadian

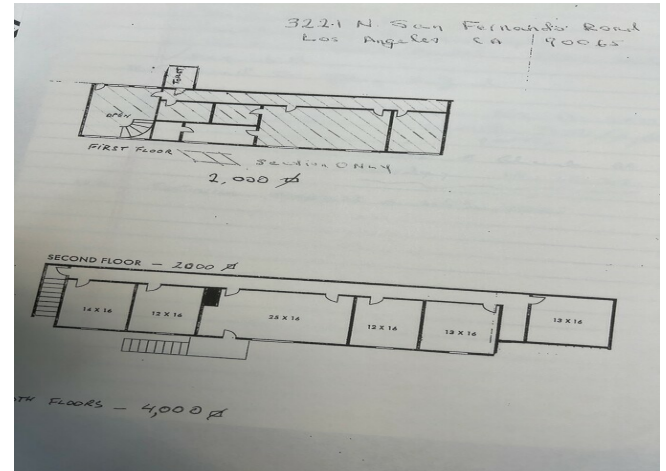
TOWN AND RANCH REALTY, INC
739 Foothill Blvd, La Canada, CA 91011
townandranch@gmail.com
(818) 426-4010

3221 N San Fernando Rd

\$18.00 /SF/YR

Part of industrial park with great frontage and dedicated parkin. Easily accessible.
Ideal location close to Freeways 5 and 2. just south of the city of Glendale...

- Central location Attractive below market rent



Rental Rate:	\$18.00 /SF/YR
Property Type:	Industrial
Property Subtype:	Manufacturing
Rentable Building Area:	4,000 SF
Year Built:	1956
Taxes:	\$0.01 USD/SF/MO
Operating Expenses:	\$0.10 USD/SF/MO
Rental Rate Mo:	\$1.50 /SF/MO

1st Floor

Space Available	4,000 SF
Rental Rate	\$18.00 /SF/YR
Date Available	January 01, 2024
Service Type	Modified Gross
Space Type	Relet
Space Use	Office
Lease Term	Negotiable

It is part of an INDUSTRIAL PARK. First floor is Approx. 2000 sqft and the second floor is also 2000sqft. Rent includes utilities.



3221 N San Fernando Rd, Los Angeles, CA 90065

Part of industrial park with great frontage and dedicated parkin. Easily accessible.
Ideal location close to Freeways 5 and 2. just south of the city of Glendale

Property Photos



offices