

165-25 JAMAICA AVENUE

CORNER OF JAMAICA AVENUE & MERRICK BLVD | JAMAICA, QUEENS



165-25 JAMAICA AVENUE

CORNER OF JAMAICA AVENUE & MERRICK BLVD | JAMAICA, QUEENS

PROPERTY HIGHLIGHTS:

- Space is divisible (see division plan)
- High visibility corner retail along Jamaica Avenue
- Excellent national co-tenancy in high foot & vehicle traffic area of dense residential neighborhood
- Neighboring tenants include: *Home Depot, Portabella, Foot Locker, Dunkin', Game Stop, Carter's, T-Mobile, Subway, Jimmy Jazz, CityMD, Blink Fitness, Children's Place, Primark, Target, Chipotle, Burlington, H&M, McDonald's, Snipes, Taco Bell, Burger King, Starbucks, Popeye's*

SPACE A: 3,500 SF Ground Floor

SPACE B: 2,500 SF Ground Floor
7,000 SF Selling Lower Level

FRONTAGE: 67'

CEILING HEIGHT: 14'

ASKING RENT: Upon Request

POSSESSION: ASAP

TRANSPORTATION:  New York City Bus



All information supplied in this marketing presentation and/or flyer is from sources deemed reliable and is furnished subject to errors, omissions, modifications, removal of listings from sale/lease and to any listing condition. Any square footage, dimensions, floor plans and/or technical data set forth are approximations and are subject to further elaboration/confirmation.

FOR MORE INFORMATION, PLEASE CONTACT:

EZRA FALACK
EFalacko@ksrny.com
917.518.3568

SOLOMON SHARABY
SSharaby@ksrny.com
718.986.7149

ALBERT MANOPLA
AManopla@ksrny.com
212.380.8369

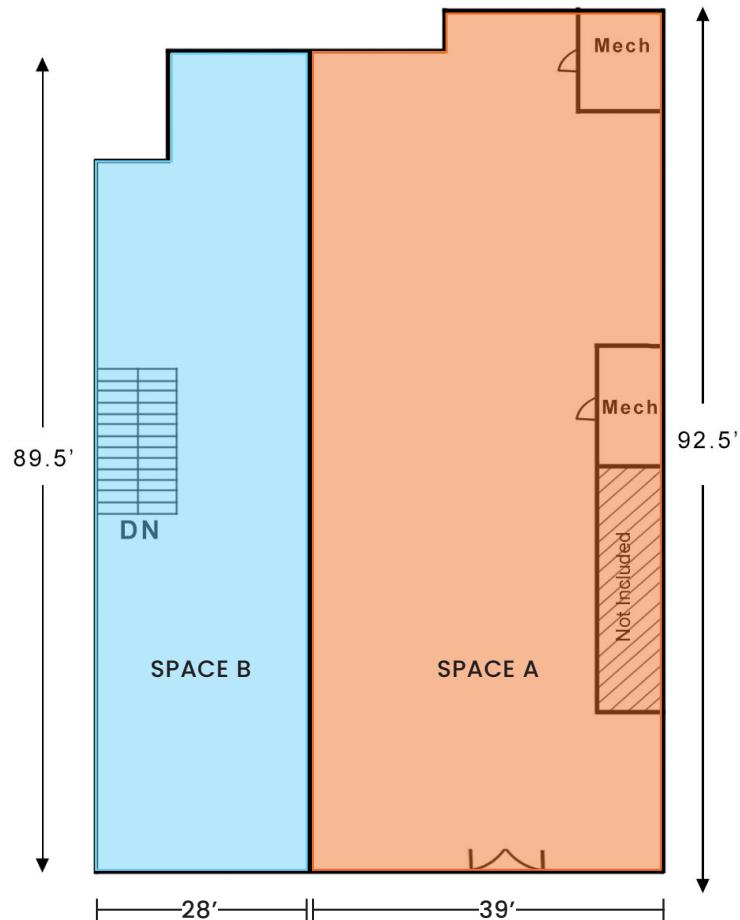
165-25 JAMAICA AVENUE

CORNER OF JAMAICA AVENUE & MERRICK BLVD | JAMAICA, QUEENS

FLOOR PLAN (DIVISION PLAN):

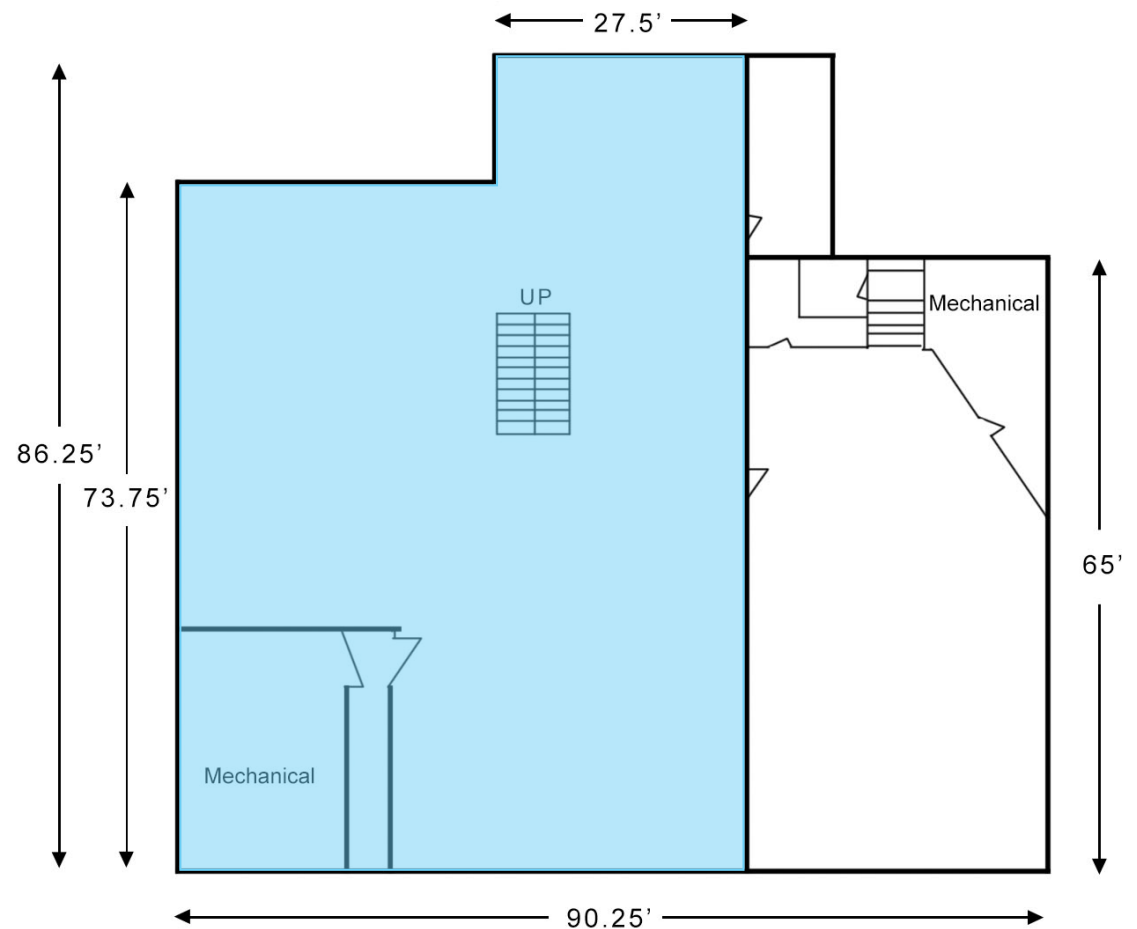
SPACE A – 3,500 SF GROUND FLOOR

SPACE B – 2,500 SF GROUND FLOOR



Jamaica Avenue

SPACE B – 7,000 SF LOWER LEVEL

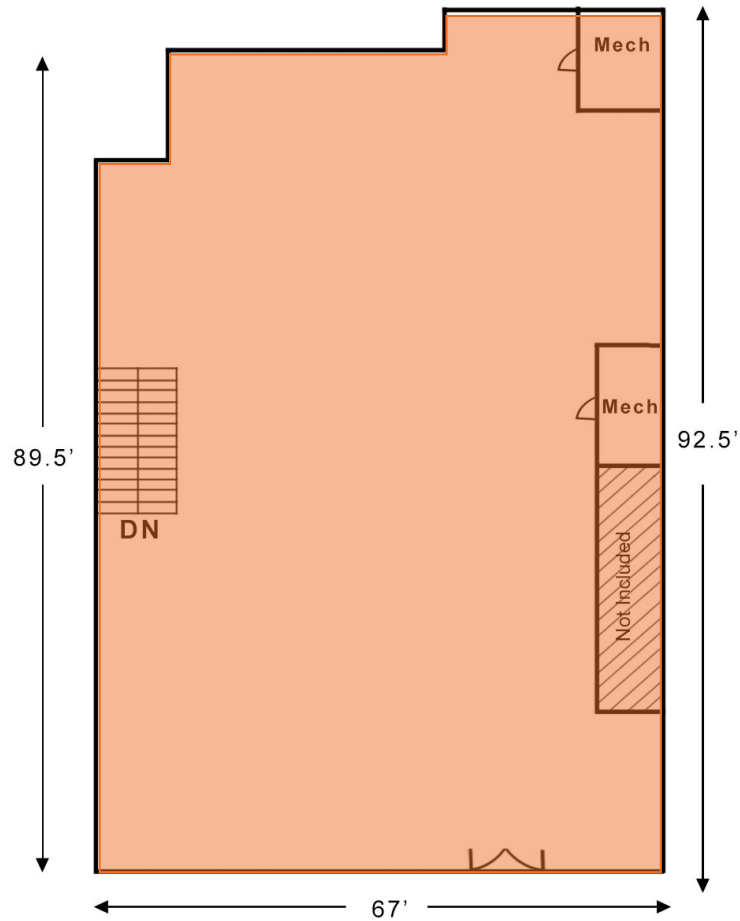


165-25 JAMAICA AVENUE

CORNER OF JAMAICA AVENUE & MERRICK BLVD | JAMAICA, QUEENS

FLOOR PLAN (FULL SPACE OPTION):

GROUND FLOOR - 6,000 SF



Jamaica Avenue

LOWER LEVEL - 7,000 SF

