

PLAZA SQUARE

1401-1499 E. PLAZA BLVD.
NATIONAL CITY, CA 91950

FOR LEASE
RETAIL / OFFICE SPACE



Hannah Cheadle, Sales and Leasing Associate | Hannah@PacificCoastCommercial.com | Lic. # 02169277

Martin F. Alfaro, Associate Vice President | Martin@PacificCoastCommercial.com | Lic. # 01230078

(619) 469-3600, 10721 Trenea St., Suite 200, San Diego, CA 92131 | www.PacificCoastCommercial.com | Lic. # 01209930


**PACIFIC COAST
COMMERCIAL**
SALES - MANAGEMENT - LEASING

TCN
WORLDWIDE
REAL ESTATE SERVICES

PROPERTY FEATURES



AVAILABLE:

1483 E Plaza Blvd.
 ±1,080 SF Medical / Office Space (Dental Office)
 Fixtures & Equipment (FF&E) Available for Purchase

BUILD-OUT:

1461 E Plaza Blvd.
 ±1,128 SF Office/Retail Space

Current Build-Out for Dentist Practice
 (Long Term Dentist Retiring)

ADDRESS:

1401-1499 E. Plaza Blvd.,
 National City, CA 91950

BUILDING SIZE:

± 30,000 SF Strip Center

LOCATION:

Prominent Location at Lighted Intersection
 of E. Plaza Blvd. and N. Ave.

TRAFFIC:

Over ±20,000 Cars Per Day

SIGNAGE:

Monument Signage Available

ACCESS:

Easy Freeway Access to I-805 & I-5

CURRENT TENANTS IN CENTER:

Little Caesars
 Epic Wings N Things
 H&R Block
 Baskin Robbins
 Jollibee Restaurant

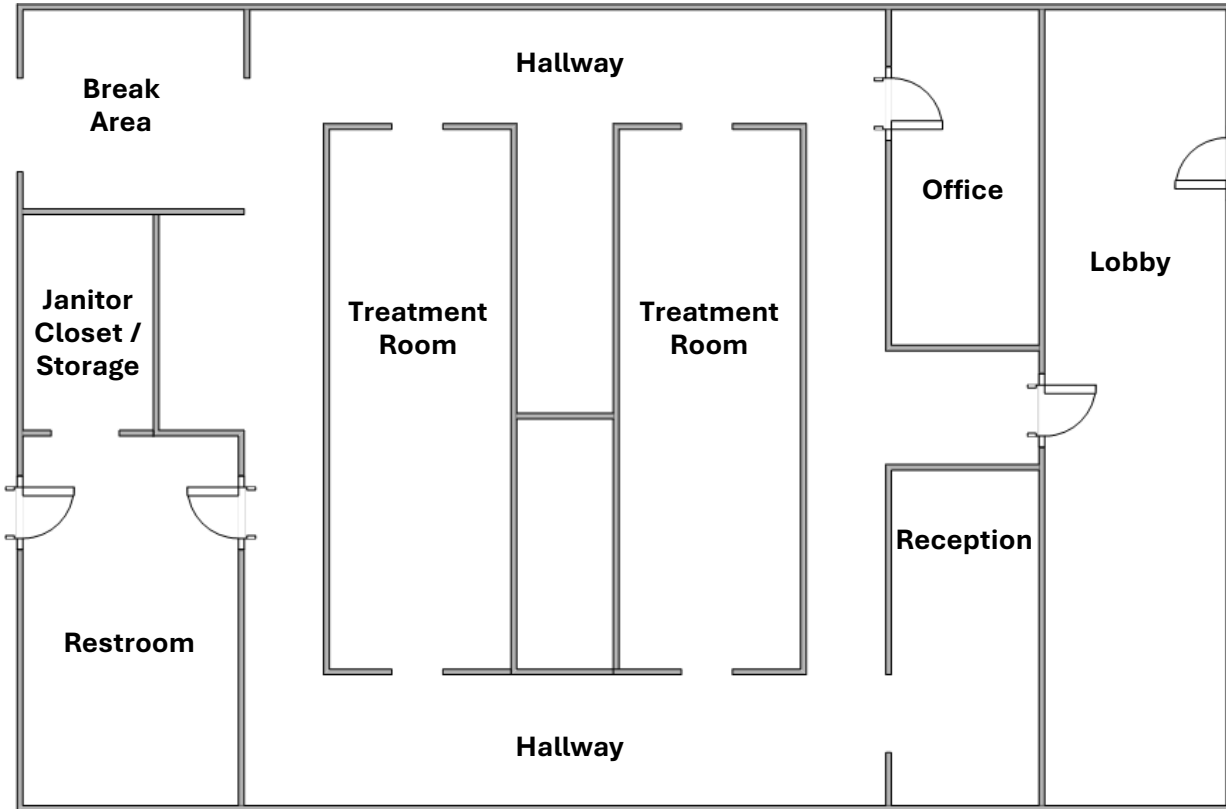
PRICING:

Call Listing Office For Pricing

FLOOR PLAN

Plans Are Not Fit to Scale; For Reference Purposes Only.

Suite 1483: ±1,080 SF Office / Medical (Dental) Space



HANNAH CHEADLE

Sales & Leasing Associate
(619) 940-4811
Hannah@PacificCoastCommercial.com
Lic. 02169277

MARTIN F. ALFARO

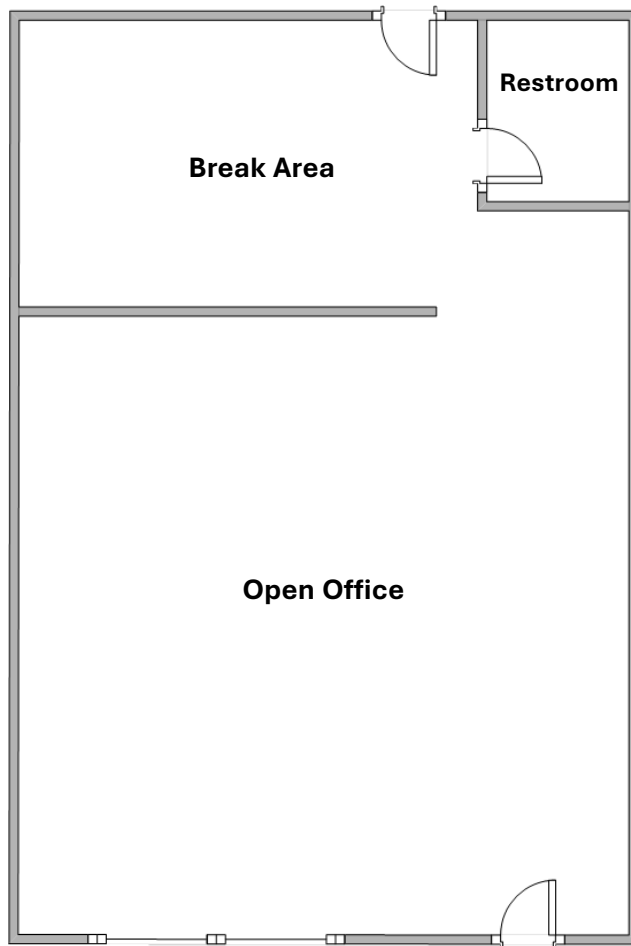
Associate Vice President
(858) 598-2890
Martin@PacificCoastCommercial.com
Lic. 01230078



(619) 469-3600 | 10721 Trenea St., Ste 200, San Diego, CA 92131 | www.PacificCoastCommercial.com | Lic. 01209930

The information contained herein has been given to us by the owner of the property or other sources we deem reliable, we have no reason to doubt its accuracy, but we do not guarantee it. All information should be verified prior to transaction.

Suite 1461: ±1,128 SF Office / Retail Space



HANNAH CHEADLE

Sales & Leasing Associate
(619) 940-4811
Hannah@PacificCoastCommercial.com
Lic. 02169277

MARTIN F. ALFARO

Associate Vice President
(858) 598-2890
Martin@PacificCoastCommercial.com
Lic. 01230078

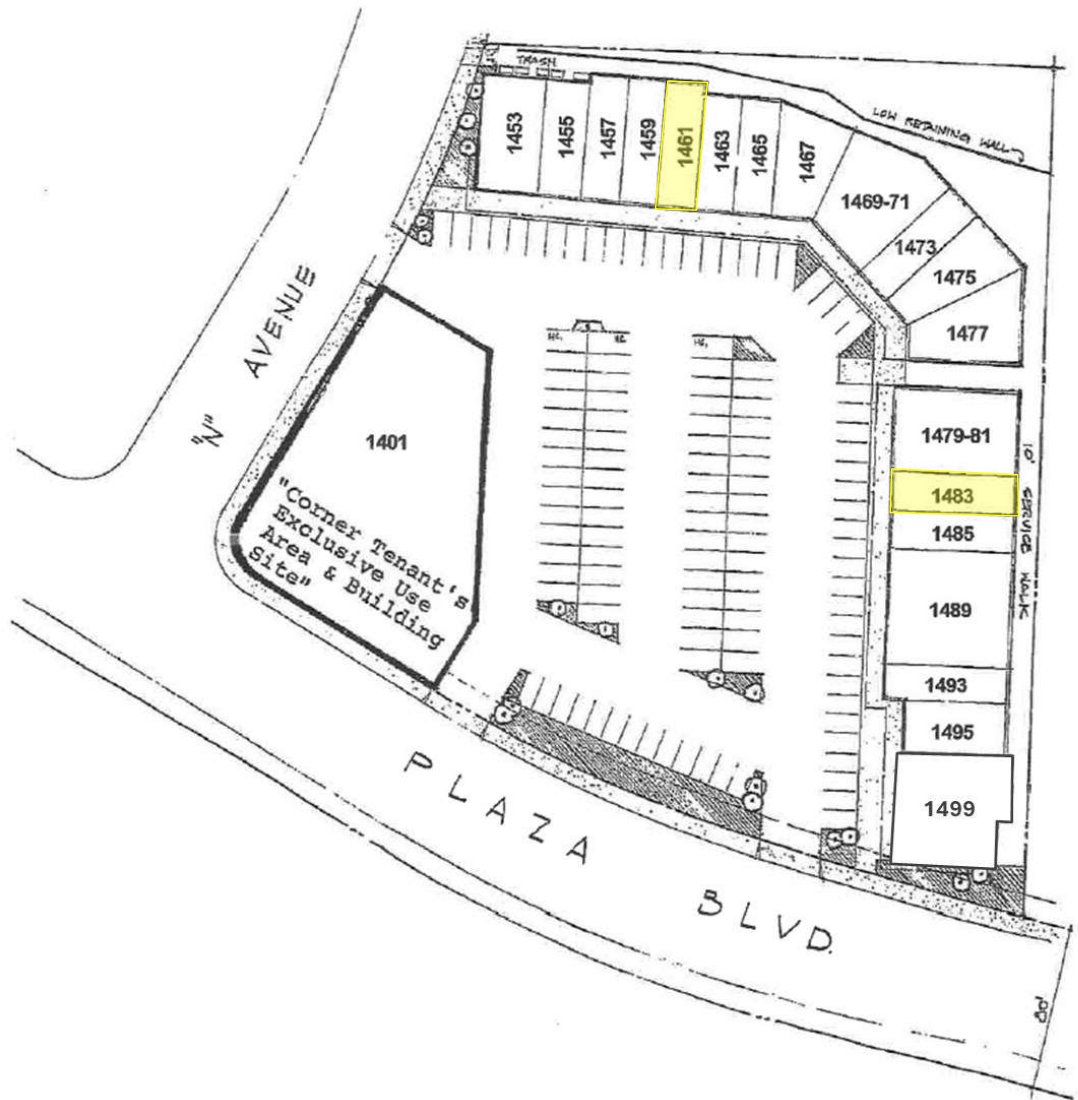


(619) 469-3600 | 10721 Trenea St., Ste 200, San Diego, CA 92131 | www.PacificCoastCommercial.com | Lic. 01209930

The information contained herein has been given to us by the owner of the property or other sources we deem reliable, we have no reason to doubt its accuracy, but we do not guarantee it. All information should be verified prior to transaction.

SITE PLAN

Plans Are Not Fit to Scale; For Reference Purposes Only.



SUITE NUMBER	TENANT
1401	Jollibee Restaurant
1453	Boba Tea Shop
1455	Jewelry Story
1457	Money Exchange
1459	Nail Salon
1461	AVAILABLE
1463	Chiropractic
1465	Hair Salon
1467	H&R Block
1469-71	Sign Company
1473	Hair Salon and Supplies
1475-77	Music & Dance Studio
1479-81	Optometrist
1483	AVAILABLE
1485	Barbershop
1489	Laundromat
1493	Baskin Robbins
1495	Little Caesars
1499	Wings N Things

HANNAH CHEADLE

Sales & Leasing Associate
 (619) 940-4811
 Hannah@PacificCoastCommercial.com
 Lic. 02169277

MARTIN F. ALFARO

Associate Vice President
 (858) 598-2890
 Martin@PacificCoastCommercial.com
 Lic. 01230078



(619) 469-3600 | 10721 Trenea St., Ste 200, San Diego, CA 92131 | www.PacificCoastCommercial.com | Lic. 01209930

The information contained herein has been given to us by the owner of the property or other sources we deem reliable, we have no reason to doubt its accuracy, but we do not guarantee it. All information should be verified prior to transaction.

PROPERTY PHOTOS



NEARBY AMENITIES



SUBJECT PROPERTY

DRIVE TIMES

- I-805**
2 Minutes
- I-5**
5 Minutes
- Naval Base San Diego Gate #9**
7 Minutes
- Downtown San Diego**
14 Minutes
- US-Mexico Border**
14 Minutes

HANNAH CHEADLE
 Sales & Leasing Associate
 (619) 940-4811
 Hannah@PacificCoastCommercial.com
 Lic. 02169277

MARTIN F. ALFARO
 Associate Vice President
 (858) 598-2890
 Martin@PacificCoastCommercial.com
 Lic. 01230078



(619) 469-3600 | 10721 Treena St., Ste 200, San Diego, CA 92131 | www.PacificCoastCommercial.com | Lic. 01209930

The information contained herein has been given to us by the owner of the property or other sources we deem reliable, we have no reason to doubt its accuracy, but we do not guarantee it. All information should be verified prior to transaction.