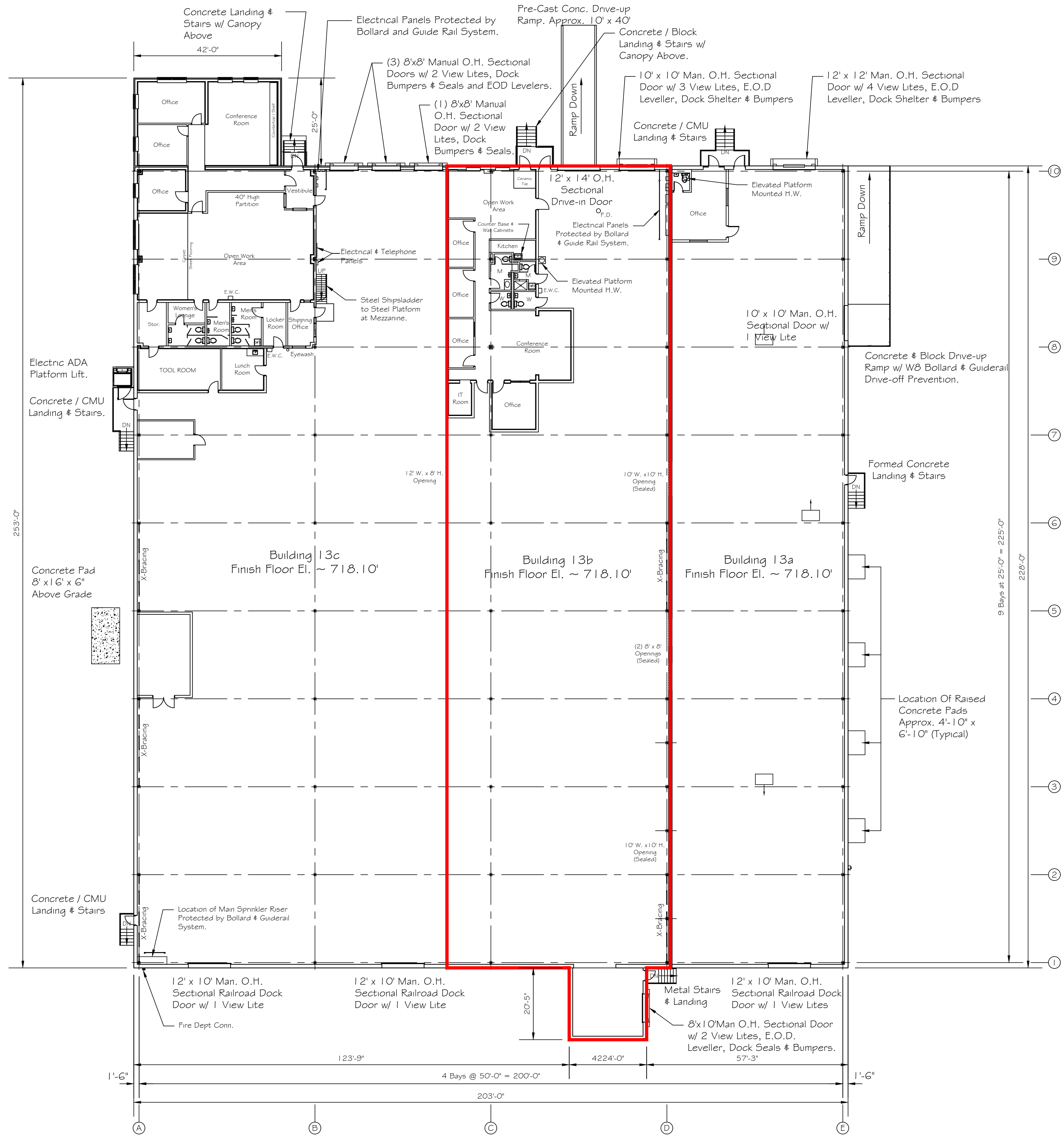


MEZZANINE FLOOR PLAN



FIRST FLOOR PLAN

Q	Updated The Overall Plan Per The Existing Conditions.	C.J.P. 1-12-16		J	Updated The Overall Floor Plan Per Existing Conditions	A.M.B. 1/11/2010		E	Revised 13C Per Existing Drawings	A.M.B. 4/29/2008		<p>Penn Liberty Plaza Building 1 1300 Penn Avenue, Suite 300 Pittsburgh, PA 15222</p>	LEETSDALE COMMERCE PARK BUILDING 13 WAREHOUSE & OFFICE FLOOR PLAN				
N	Updated The Finish Floor Elevations Per Engineers Certificate	A.M.B. 2/6/2012		H	Updated The Overall Floor Plan Per Existing Conditions	A.M.B. 10/14/2009		D	Revised 13A Per Site Visit.	S.L.S. 6/27/2007			SCALE	DRAWN	CHKD.	DRAWING NUMBER	REV.
M	Updated The Overall Plan Per The Existing Conditions.	A.M.B. 3/17/2011		G	Updated The Overall Floor Plan Per Field Visit.	A.M.B. 10/9/2009		C	Building B Drive Up Ramp Removed	C.A.S. 4/22/2002			1/16" = 1'-0"	C.A.S.		LTSD-013-A-02	0
L	Updated Building 13B Per Existing Conditions.	A.M.B. 9/15/2010		F	Updated The Overall Floor Plan Per Existing Conditions	A.M.B. 8/7/2009		B	Drawing Number Was FP-1	C.A.S. 1/3/2002			DATES	7/24/2000			
K	Revised The General Notes Located Within Building 13A	A.M.B. 4/23/2010															
REV.	DESCRIPTION	MADE	CHKD.	REV.	DESCRIPTION	MADE	CHKD.	REV.	DESCRIPTION	MADE	CHKD.		LOCATION:	BOROUGH OF LEETSDALE ALLEGHENY COUNTY, PA			