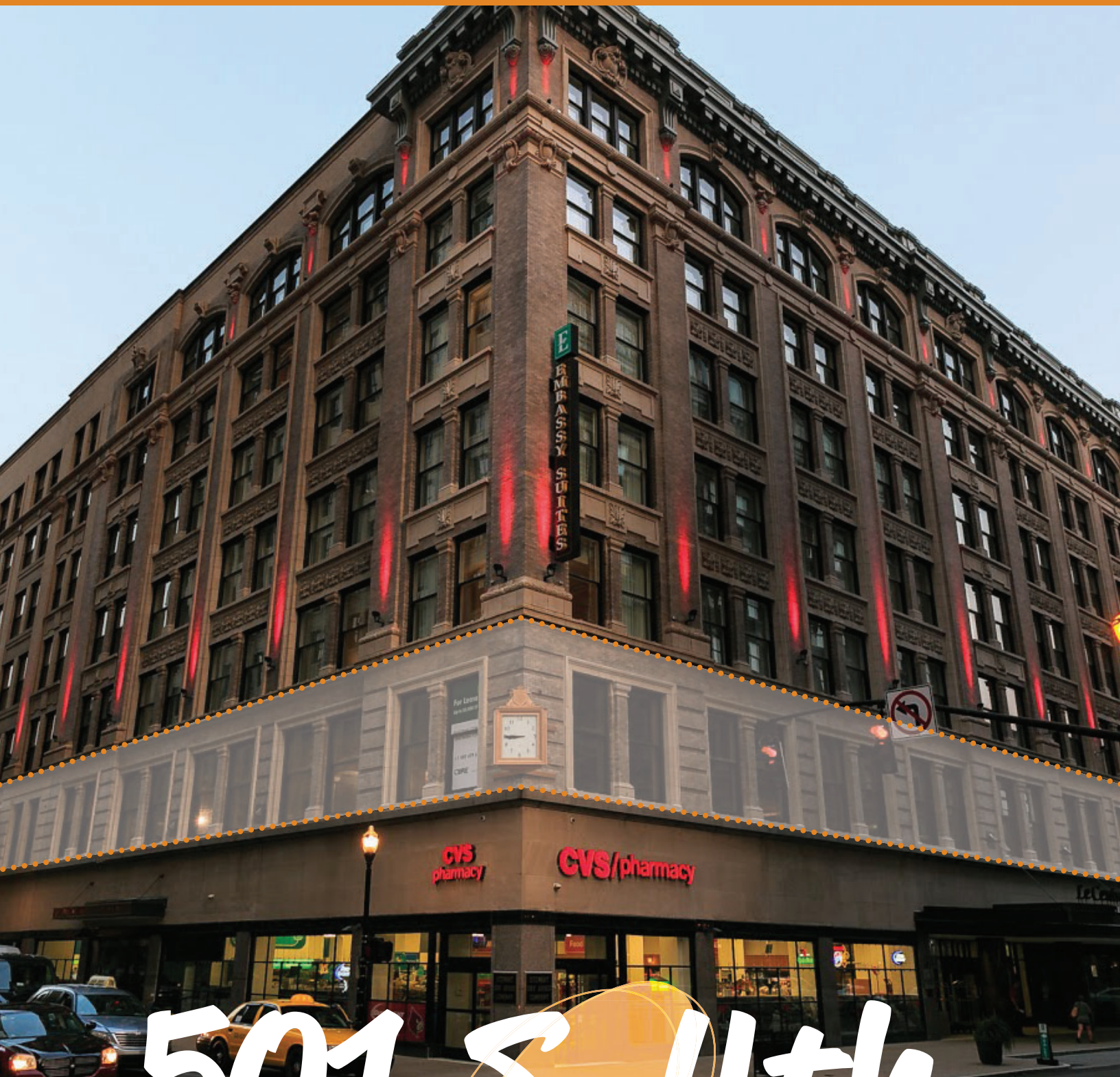


HISTORIC SPACE AVAILABLE IN LOUISVILLE'S VIBRANT DOWNTOWN



501 S. 4th

LOUISVILLE KENTUCKY

CBRE

www.cbre.com/louisville

501 S. 4th

Access to ample redundant power grid, building generator for uninterrupted power

High ceilings with vintage, loft style potential

Large contiguous block of space in the heart of the Louisville cbd

World-class restaurants and lodging within walking distance as well as in the building



Historic window line with abundant natural light along the West & North

Connected via Louie Link to 4th Street Live!, Convention Center & KFC YUM! Center

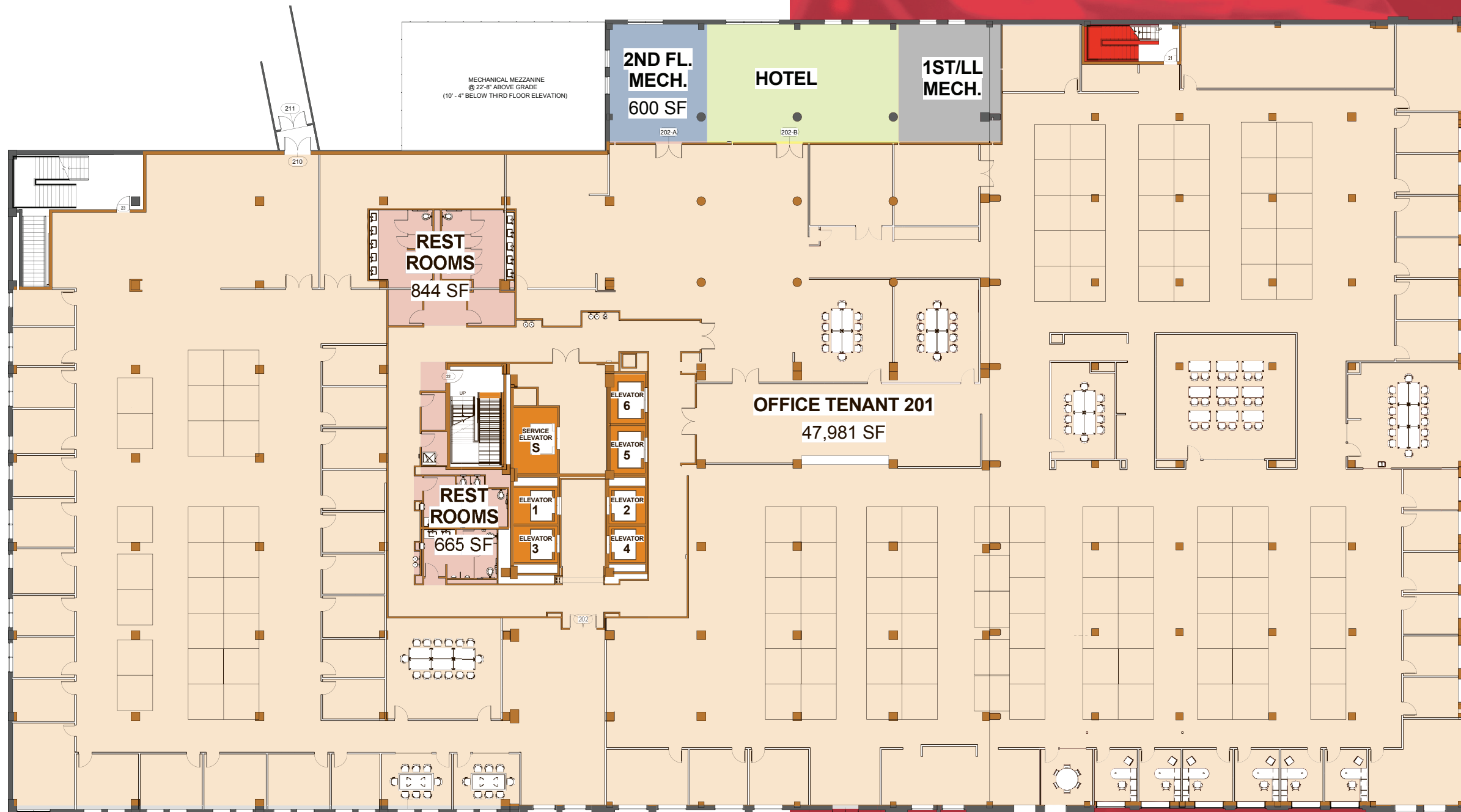
Easy access to Interstates I-64, I-65 and I-71 as well as public transportation

Signage opportunity at the corner of 4th Street and Muhammad Ali Boulevard

2nd Floor Floor Plan

-  Occupant Area - 47,981 SF
-  Floor Service Area - 2,109 SF
+1,364 SF, 1st floor common area

501 S. 4th



FOURTH STREET *Live!*

- Brazierios
- Goose Island
- Gordon Biersch
- Hard Rock Cafe
- Maker's Mark
- T.G.I. Friday's
- Tengo Sed Cantina
- The Fudgery
- Sports & Social
- Howl at the Moon
- Marquee Bar
- Foot Locker
- T-Mobile
- Philly Station
- Smoothie King
- Subway
- Taco Bell/KFC
- Taipei Cafe
- PBR Louisville
- Tavern Hall
- Tavern on Fourth
- Kill Devil Club

W. MUHAMMAD ALI BLVD.

SEELBACH HILTON/STARBUCKS

W. CHESTNUT ST.

8UP DRINKERY

MERCURY BALLROOM

THE PALACE THEATRE

S. 4TH ST.

4TH ST.

501 S. 4th





501 S. 4th

LOUISVILLE KENTUCKY

FOR MORE INFORMATION PLEASE CONTACT:

DAVID L. HARDY, CCIM
managing director
+1 502 412 7644
david.hardy@cbre.com

MARC BARLOW, CCIM
vice president
+1 502 412 7625
marc.barlow@cbre.com

CBRE

www.cbre.com/louisville

© 2019 CBRE, Inc. All rights reserved. This information has been obtained from sources believed reliable, but has not been verified for accuracy or completeness. You should conduct a careful, independent investigation of the property and verify all information. Any reliance on this information is solely at your own risk. CBRE and the CBRE logo are service marks of CBRE, Inc. All other marks displayed on this document are the property of their respective owners, and the use of such logos does not imply any affiliation with or endorsement of CBRE. Photos herein are the property of their respective owners. Use of these images without the express written consent of the owner is prohibited. PMStudio_April2019