

28008 HINKELMAN RD

Hard to find IOS yard with easy access to HWY 410

28008 HINKLEMAN RD, BUCKLEY, WA 98321

PRICING

LEASE RATE	\$0.15 YARD
MONTHLY BASE RENT	\$6,500.00
MONTHLY NNN	\$435.60
TOTAL MONTHLY RENT	\$6,935.60



PROPERTY OVERVIEW

AVAILABILITY	Now
LAND AC	1 acre (potentially for an additional acre)
LAND SF	100,536
OFFICE SF	Two modular offices
PROPERTY FEATURES	Lighted, Fenced, Graveled, Gated, Security Cameras available
ZONING	Industrial

[→ ZONING MAP](#)

[→ ZONING USES](#)

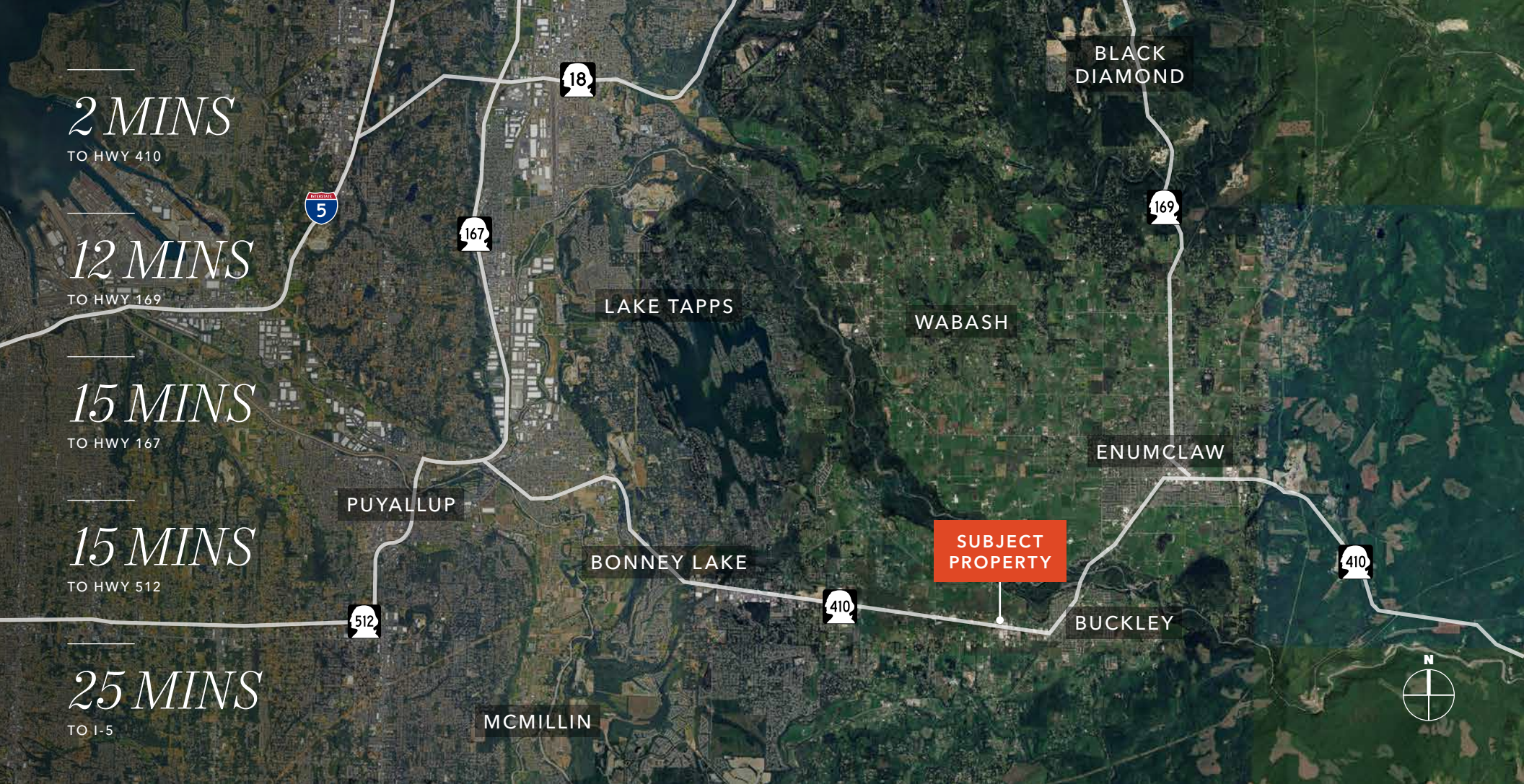


NOW

AVAILABLE

\$6,500

MONTHLY, + NNN



28008 HINKLEMAN RD

*For more information on
this property, please contact*

CHRIS TRUSSEL
Associate Vice President
253.722.1467
chris.trussel@kidder.com

MATT MCLENNAN, SIOR, CCIM
Executive Vice President
253.722.1458
matt.mclennan@kidder.com

KIDDER.COM

This information supplied herein is from sources we deem reliable. It is provided without any representation, warranty, or guarantee, expressed or implied as to its accuracy. Prospective Buyer or Tenant should conduct an independent investigation and verification of all matters deemed to be material, including, but not limited to, statements of income and expenses. Consult your attorney, accountant, or other professional advisor.

